



## Installation Instructions: Rear Lower Trailing Arms



*Read all instructions before beginning work. Following the instructions in the proper sequence will ensure the best and easiest installation. Contact us at [sales@allanglesdesign.com](mailto:sales@allanglesdesign.com) for questions or comments about the installation process.*

**Caution!** Installing this product requires disassembly of some suspension components. If you are not confident you can complete the job safely, have the work performed by a certified technician.



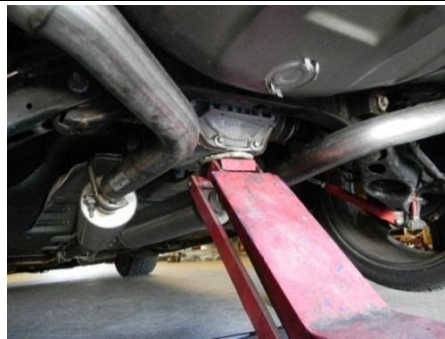
### TOOLS REQUIRED:

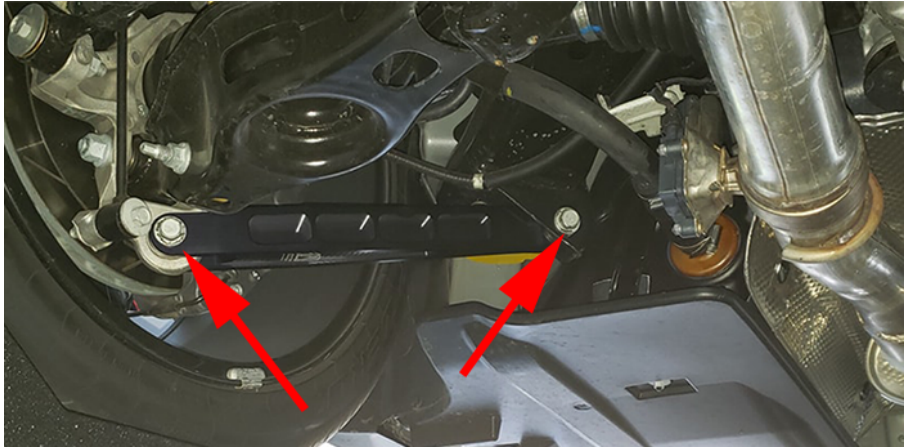

- 18mm Open End Wrench
- 18mm Socket and Wrench
- Torque Wrench
- Floor Jack and Jack Stands

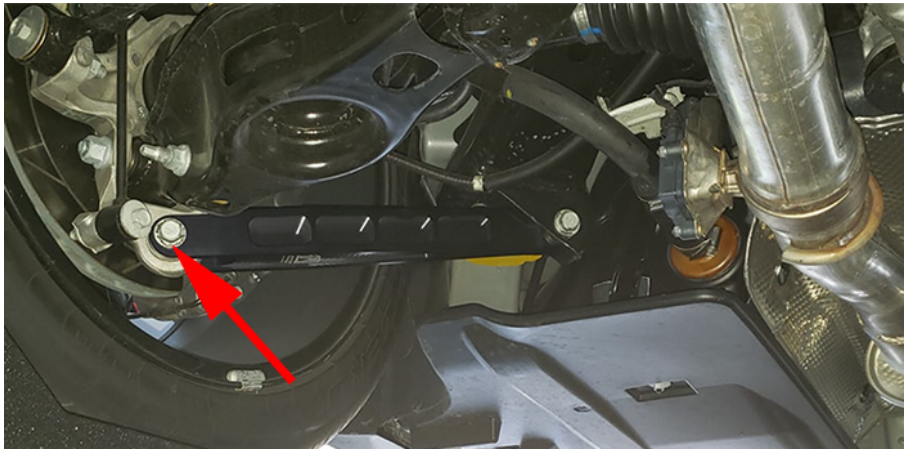
### KIT CONTENTS:

- 2 x Billet Rear Lower Trailing Arms

1. Park the vehicle in a level area, engage the parking brake, and place chocks in front of and behind the front tires to prevent rolling. Use a floor jack to raise the rear of the car so that both rear tires are approximately 6" off the ground and place the jack stands under the vehicle to support it.



2.	Remove both rear tires and set aside.	
3.	Locate and remove the nut and bolt holding the factory Trailing arm to the knuckle. (Using the 18mm wrench and socket)	
4.	Located and remove the nut and bolt holding the factory trailing arm to the forward side of the cradle. (Using the 18mm wrench and socket)	
4.5	You will reuse your Oem hardware for installation.	
5.	Install your new AAD Performance Trailing arms, by first installing the front cradle mount bolt and nut. Do not fully tighten this bolt, you can snug it up.	

6.	Install the arm onto your knuckle. <b>Sometimes using a jack under the brake rotor or lower control arm to lift the knuckle, will assist with lining up the holes on the trailing arm with the bushing hole in the knuckle.</b>	
7.	Set your torque wrench to 72 ft Lbs. Torque all 4 bolts to 72 ft lbs.	
<p><b>Care and Maintenance:</b>          These parts require little or no ongoing care or maintenance. We do recommend that 1-2 weeks after installation you re-check torque on all nuts and bolts touched during assembly (including wheel lug nuts!) to verify nothing has loosened up.          The bushings are lubricated when we assemble the parts and should not require more lubrication for years. If, however, you experience squeaking from any arm, let us know and we'll help you work through adding lithium grease to stop the noise. Lubrication should be applied between the steel bushing sleeve and the urethane, and not the aluminum arm body and the urethane to prevent squeaking and unnecessary wear.</p>		



**CONGRATULATIONS!** You have completed the installation of your AAD Performance Rear Lower Trailing Arms. If you have questions or comments about the installation, please email [sales@allanglesdesign.com](mailto:sales@allanglesdesign.com) or contact us on our Facebook Page at [facebook.com/AllAnglesDesign](https://facebook.com/AllAnglesDesign) We sincerely thank you for your purchase and hope you enjoy this and other AAD Performance products.