



Chester Machine Tools



2017 Catalogue

ELECTRICAL

PLUGS AND SOCKETS



Description	Product Code	Weight
Red 16amp 3P+E Trailing Plug	028-701	0.25kg
Red 16amp 3P+E Trailing Socket	028-703	0.25kg
Red 16amp 3P+E Panel Socket	028-704	0.25kg
Red 16amp 3P+E Surface Socket	028-705	0.25kg
Red 16amp 3P/N/E Trailing Plug	028-706	0.25kg
Red 32amp 3P/N/E Trailing Plug	028-707	0.50kg
Blue 16amp 2P+E Trailing Plug	028-711	0.25kg
Blue 16amp 2P+E Surface Plug	028-712	0.25kg
Blue 16amp 2P+E Trailing Socket	028-713	0.25kg
Blue 16amp 2P+E Panel Socket	028-714	0.25kg
32 amp 3P/N/E Panel Socket	028-715	0.25kg
16 amp 3P/N/E Panel Socket	028-720	0.25kg
Red 32amp 3P/E Plug	028-716	0.50kg
Blue 16amp 2P+E Surface Socket	028-717	0.25kg
3 P+E Surface Plug	028-718	0.25kg
2 P+E 110V Trailing Plug	028-719	0.25kg

HEAVY DUTY STARTER



Complete with Thermal Overload

Voltage	Ampage	Stock Code	Weight
240V	12a	028-103	1.0 kg
415V	12a	028-104	1.0 kg
240V	32a	028-105	1.0 kg
415V	32a	028-106	1.0 kg

N.V.R. SWITCH



complete with Forward Reverse Switch

Voltage	Stock Code	Weight
240V	028-201	0.5kg
415V	028-202	0.5kg

N.V.R. SWITCH



NVR Switch	NVR240	NVR415
Rated Voltage	240V	415V
Rated Current AC-3	16A	12A
Rate Current AC-15	8A	8A
Rated Frequency	50/60Hz	50/60Hz
Number of Operating Cycles	5.00E+04	5.00E+04
Stock Code	028-204	028-203

Latching Mushroom Type Emergency Stop Switch



Rated Insulation Voltage	AC600V
Power Frequency Voltage Withstand	2500V/min
Conventional Thermal Current	10A
Stock Code	ELE-0010

MULTIMETERS

DM830D



Voltage DC	200m/2000m/20/200/60v
Voltage AC	200/600v
Current DC	2000µ/20m/200m/10A
Resistance	200/2000/20k/200k/2000kΩ
Square wave	50hz
Diode check	3v/0.8mA
hFE	V _{ce} ≈ 3v, I _b ≈ 10 µ A
Power source	9V battery(6F22)
Dimensions	52.5x37x28.5cm
N.W	19kg
Accessories	Test lead; Battery; Users manual

FEATURES

- 3 1/2 Digits Lcd, Max Reading 1999
- Low Battery Indication
- Overload Protection

MY64A



DCV	200m-2-20-200-1000v
ACV	2-20-200-750v
DCA	2m-20m-200m-10A
ACA	20m-200m-10A
Ohm	200-2K-20K-200K-2M-20M-200MΩ
CAP	2n-20n-200n-2µ-2µF
TEMP	-40 °C ~1400 °C
FREQ	20KHz
Diode check	2.8V/1mA
Hfe	V _{ce} ≈3V, I _b ≈10µF
Power source	9V battery (6F22)
Dimensions:	51.7X35.2X36.2cm
N.W	13kg
Accessories	Test lead; Battery; Users manual; Holster

FEATURES

- 3 1/2 Digits Lcd, Max. Reading 1999
- 11 Functions, 30 Ranges
- Capacitance Measurement
- Temperature Measurement
- Frequency Measurement
- Low Battery Indication
- Overload Protection
- Audible Continuity
- Auto Power Off

EM201



Voltage DC	1000v
Voltage AC	750v
Current AC	20/200/1000A
Resistance	2k/200kΩ
Diode check	approx.2.8v
Power source	9v(6F22)X1
Dimension	51.7X29.2X28cm
N.W	12kg

FEATURES

- 3 1/2-Digit Backlight Lcd(16mm)
- Overload Protection To All Range
- Data hold Function
- Zeroing Function

EC5318B



Voltage DC	200m/2/20/200/1000v
Voltage AC	20/750v
Current DC	200µ/2m/20m/200m/10A
Resistance	200/2k/20k/200k/2M/20M/200MΩ
Diode check	2.8v/1mA
Battery check	1.5V,9V
hFE	V _{ce} ≈3v, I _b ≈10µA
Power source	9V battery (6F22)
Dimensions	53.7x34.2x26.8cm
N.W	14kg
Accessories	Test lead; Battery; Users manual

FEATURES

- 3 1/2 Digits Lcd, Max. Reading Of 1999
- Auto Polarity Indication
- Measuring Resistance Up To 200mw
- Low Battery Indication
- Overload Protection
- Audible Continuity

MY99L



DCV	400m-4-40-400-1000V
ACV	400m-4-40-400-750V
DCA	400µ-4m-40m-400m-4A-40A
ACA	400µ-4m-40m-400m-4A-40A
OHM	400-4k-40k-400k-4m-40MΩ
CAP	4n-40n-400n-4µ-40µ-100µF
FREQ	40-400-4000-40K-400K-4M-10MHz
DUTY	5%~95%
Diode check	2.8V/1mA
hFE	V _{ce} ≈3v, I _b ≈10µA
Power source	9v battery (6F22)
Dimensions	51.7X35.2X36.2cm
N.W	12kg
Accessories	Test lead; Battery; Users manual; Holster

FEATURES

- 3 3/4 Digits Lcd, Max. Reading 3999
- 11 Functions
- Ranging Method: Auto/Manual
- Rel Button
- Duty Selecting Button
- Low Battery Indication
- Overload Protection
- Audible Continuity
- Auto Power Off
- Backlight

LAMPS



LAMPS

Model	Weight	Stock Code
Short-arm Lamp 24v	2 KGS	LAMP-001
Flexi-arm Lamp mag/steel base c/w transformer 240v	2.5 KGS	LAMP-002
Flexi-arm lamp screw type steel base c/w transformer 240v	2.5 KGS	LAMP-003
Medium-arm Lamp c/w transformer 240v	3.5 KGS	LAMP-004
H/D-Flexi-arm Lamp screw type c/w transformer 240v	3.5 KGS	LAMP-005
H/D-Flexi-arm Lamp mag/steel base c/w transformer 240v	3.5 KGS	LAMP-006
Long-arm Lamp 24v	3.5 KGS	LAMP-007
Fluorescent Magnifying Lamp 240v	5 KGS	LAMP-010

SPARE BULBS

Model	Weight	Stock Code
LAMP-001	0.05kg	LAMP-BULB-001
LAMP-002	0.05kg	LAMP-BULB-002
LAMP-003	0.05kg	LAMP-BULB-003
LAMP-004	0.05kg	LAMP-BULB-004
LAMP-005	0.05kg	LAMP-BULB-005
LAMP-006	0.05kg	LAMP-BULB-006
LAMP-007	0.05kg	LAMP-BULB-007

GRINDING WHEELS



Model	Dia.	Bore	Width	Stock Code
6" Coarse	150mm	20mm	25mm	GRI-WHEEL-6C
6" Fine	150mm	20mm	25mm	GRI-WHEEL-6F

All grinding wheels are suitable for the Chester/Brierley range of grinders

GRINDING WHEELS DRESSERS



Model	Dia.	Face	Stock Code
No. 0 Dresser	up to 250mm	50mm	GRI-DRE-0
No.1 Dresser	250-406mm	75mm	GRI-DRE-1
No.2 Dresser	406-914mm	88mm	GRI-DRE-2

SPARE CUTTERS

Model	Stock Code
No.0 Spare Cutter	GRI-DRE-SC0
No.1 Spare Cutter	GRI-DRE-SC1



DRILL GRINDING ATTACHMENT



Model	Stock Code
Drill Grinding Attachment	DRI-GRI-ATT

T SLOT CLEANER

THESE ARE USED TO CLEAN T SLOTS ON MILLING MACHINES
SUITABLE FOR 1/2" 12 MM T SLOTS



Size	130mm Long
Weight	0.5kgs
Stock Code	071-110

HANDLES



Model	Description	Swing	Overall Length	Fitting	Weight	Stock Code
A	Ball Crank	125		12mm bore	0.25kg	080-101
B	U Handle	60		8mm bore	0.25kg	080-102
C	Lever & Boss	200		Tapped M8	0.25kg	080-103
D	Lever		104	M8 Thread	0.25kg	080-104
E	Lever		145	M8 Thread	0.25kg	080-105
F	Lever & Boss	110		M8 Thread	0.25kg	080-106
G	Lever		60	M8 Thread	0.25kg	080-107
H	Handwheel	100		12mm Bore & Keyway	0.5kg	080-108
I	Handwheel	125		12mm Bore & Keyway	0.5kg	080-109
J	Safety Handwheel			For Turret Mills with Xor Y Axis Power Feed	0.5kg	251-S-HAN-001

POWER FEEDS

Adding a power feed to your machine will improve efficiency and produce a higher quality finish to your work. Each unit has forwards, reverse, variable speed and a rapid feed button. To meet safety specifications power is 110volt, requiring a transformer.



X AXIS POWER FEED
SUITABLE FOR 626 AND TURRET STYLE MILLS



STD BENCH MILL POWER FEED
SUITABLE FOR E25,E30,LUX AND BENCH MILL DRILLS

POWER FEEDS

Model	Weight	Stock Code
Std Bench Mill	6.5kg	064-001
X	6.5kg	064-002
Y	6.5kg	064-003
Z	6.5kg	064-004

POWER FEED PARTS



Item	Stock Code
Blue Zytec Gear	064-S-E0934
Switch Cover	064-S-061
Rapid Feed Cover	064-2-022
Motor Brushes	064-S-E-0905
Switch	064-S-060
Potential Meter	064-S-112

GEARED POWER FEED



GEARED POWER FEED
PROVIDES MORE TORQUE
FOR HIGHER TABLE LOADS

Specifications

Speeds	9
Speed Range	24-270
Power	415 Volt
Stock Code	064-019

TRANSFORMER FOR POWER FEEDS



Voltage	Outputs	Weight	Stock Code
240v-110v	x1	4.5kg	071-007
240v-110v	x2	7.5kg	071-008
415v-110v	x1	4.5kg	071-010
415v-110v	x2	7.5kg	071-009

COOLANT PUMPS



Power	PCD Mounting Holes	Overall Height	Pump Impellar Height	Max Flow	Max Head	Pipe Connection	Weight	Stock Code
240v Single Phase	127mm	305mm	150mm	20L	2m	3/8 BSP	6kg	026-311
380v Three Phase	127mm	305mm	150mm	20L	2m	3/8 BSP	6kg	026-312
240v Single Phase	127mm	255mm	100mm	20L	2m	3/8 BSP	6kg	026-309
380v Three Phase	127mm	255mm	100mm	20L	2m	3/8 BSP	6kg	026-310

COOLANT HOSE



Model	Connection Thread	Weight	Stock Code
1/4"	1/4 BSP Male	0.25kg	HOS-62220
1/4"	1/4BSP Female	0.25kg	HOS-62721
3/8"	3/8 BSP Male	0.25kg	HOS-63320
3/8"	3/8" BSP Female	0.25kg	HOS-63321
1/2"	1/2" BSP Male	0.25kg	HOS-64420

COOLANT HOSE WITH MAGNETIC BASE



Model	Weight	Stock Code
CHMB	0.5kgs	026-140

COOLANT FLUID

Qty	Weight	Stock Code
1 Litre	1kgs	026-401
5 Litres	5kgs	026-402
25 Litres	25kgs	026-403

COOLANT SYSTEMS



The Light Duty Coolant System has been designed for small bench top machines such as; lathes, milling and drilling machines. They are supplied in 240v and provide a pumping capacity of 6 litres per minute with a maximum head of 1.3metres. Size of the tank is 180 x 285 x 285mm and weight 11kgs. Each system is supplied with pump, magnetic flexible coolant hose, delivery hose, drain hose, on/off switch and plug.

Size (H x W x D)	Power	Max Flow	Max Head	Weight	Stock Code
290 x 350 x 340mm	240v Single Phase	6L/M	1.3m	8kg	026-303



Heavy Duty Coolant Systems are fitted with a continuously rated coolant pump to ensure longevity of use. Each system is supplied with heavy duty pump, magnetic flexible coolant hose, delivery hose, drain hose, and heavy duty on/off switch.

Size (H x W x D)	Power	Max Flow	Max Head	Weight	Stock Code
320 x 450 x 330mm	240v Single Phase	20L/M	2m	14kg	026-301
320 X 450 X 330mm	380v Three Phase	20L/M	2m	12kg	026-302

COOLANT HOSE FITTINGS



'Y' Connectors

Size	Weight	Stock Code
1/4"	0.25kg	HOS-82038/1
3/8"	0.25kg	HOS-63322/1



Flared Nozzle

Size	Weight	Stock Code
1/4"	0.25kg	HOS-82027/1
3/8"	0.25kg	HOS-63323/1



Round Nozzle

Size	Weight	Stock Code
1/4"	0.25kg	HOS-85000/1
3/8"	0.25kg	HOS-85001/1
1/2"	0.25kg	HOS-85002/1

COOLANT HOSE PLIERS



Size	Weight	Stock Code
1/4"	0.5kgs	HOS-26171
3/8"	0.5kgs	HOS-26176

'Y' CONNECTOR REDUCER



Size	Weight	Stock Code
1/2" inlet 1/4" outlet	0.25kg	HOS-84069/1

MACHINE MOUNTS



These heavy duty machine mounts provide good vibration reduction and the excellent height adjustment allows for uneven surfaces.

Model	A	B	C	DxL	Load	Weight	Stock Code
TK-40	40mm		15mm	5M-100	80kg		VER-TK-40
TK-80	80mm	50mm	25mm	10M-100	400kg	0.8kgs	VER-TK-80
TK-120	120mm	90mm	32mm	12M-100	1100kg	1.4kgs	VER-TK-120
TK-160	160mm		35mm	16M-100	2000kg		VER-TK-160
TK-185	185mm		39mm	20M-100	5000kg		VER-TK-185
TK-229	229mm		54mm	24M-100	7000kg		VER-TK-229
TK-317	317mm		70mm	30M-100	10000kg		VER-TK-317

HORIZONTAL MILLING ATTACHMENTS



HORIZONTAL MILLING HEAD

* Please notify the quill diameter when ordering

Model	Suitable for Milling Head Quill Diameter	Stock Code	Weight
R8	85.725 - 86mm	HOM-M01-R8	12.5kg
ISO40	85.725-86mm	HOM-M03-NT40	18kg

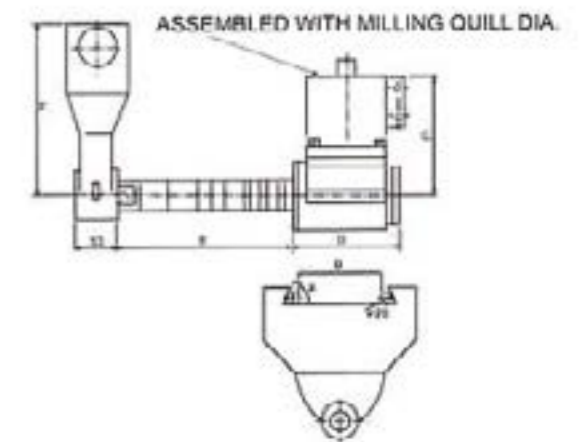
S P E C I F I C A T I O N S

Model	C	D	E	F	Stock Code	Weight
R8	175mm	138mm	255mm	233mm	HOM-M04-R8	25kg
ISO40	183mm	190mm	270mm	233mm	HOM-M06-NT40	32kg



HORIZONTAL MILLING ARBOR SUPPORT

a	Suitable M/C Ram deviation Width (B)	Weight
50°	140-170mm	25.7kg
60°	140-170mm	30.8kg



FEATURES





- Converts a Vertical Mill to Horizontal
- Suitable for R8 and ISO40 Machines
- Simple Setup
- Max Speed 2000rpm
- Sealed Unit



Chester Machine Tools

Head Office
Chester Machine Tools
Clywd Close
Hawarden Industrial Park
Hawarden
Chester
CH5 3PZ
United Kingdom

Midlands Office
Chester Machine Tools
Unit 4 Plant Lane Business Park
Plant Lane
Burntwood
Staffordshire
WS7 3GN
United Kingdom

 www.chestermachinetools.com
 sales@chestermachinetools.com
 +44 (0) 1244 531631
 +44 (0) 1244 531331

