

STYLE 350-1200 serie

Technical specifications

Machine		STYLE 350	STYLE 510	STYLE 650	STYLE 750	STYLE 1000	STYLE 1200
Swing over bed	mm	380	510	650	750	1000	1200
Swing over support	mm	190	300	430	530	710	910
Distance between centers	mm	850	1350 / 1850 ¹	900 / 1900 / 2900 / 3900		2200 / 3200 / 4000 / 5000	
Bed width	mm	305	330	450	450	560	
Maximum weight between centers	kg	300	600 / 750 ¹	1500	1500 / 2000 ²	3200 / 3500 ²	
Main spindle							
Main motor power (S6)	kW	5.5 / 7.5	7.5 / 11	23 / 27.5 / 35	23 / 27.5 / 35	27.5 / 35	
Spindle bore	ø mm	54	80 / 102	105	105 / 155 / 180 / 230	155 / 250 / 305	
Max main spindle torque (S6)	Nm	373 / 509	718 / 1050 ⁽⁸⁰⁾ 1180 ⁽¹⁰²⁾	3450 / 4140 / 7900 ⁽¹⁰⁵⁾	4090 / 4870 / 9290 ⁽¹⁵⁵⁾ 5875 / 11217 ^(180/230)	22725 / 43385 ⁽¹⁵⁵⁾ 43730 / 83490 ^(250/305)	
with gearbox							
Max spindle speed	rpm	3000 / 4000	2500 ⁽⁸⁰⁾ / 2100 ⁽¹⁰²⁾	2000 ⁽¹⁰⁵⁾ / 1500 ⁽¹⁵⁵⁾	1250 ⁽¹⁸⁰⁾ / 1000 ⁽²³⁰⁾	600 ^(250/305) / 800 ⁽¹⁵⁵⁾	
Spindle taper		D1-6	D1-8	D1-11	D1-11 / A2-11 / A2-15	A2-11 / A2-15 / A2-20	
X- and Z-axis							
Ball screw spindle ø X-axis	mm	25	25	32	32	40	40
Ball screw spindle ø Z-axis	mm	40	40	50	50 / 63	63	63
Rapid movement	m/min	8	8	8	8	8	8
Feed rate	mm/min	0.01 - 2000	0.01 - 2000	0.01 - 2000	0.01 - 2000	0.01 - 2000	0.01 - 2000
Tail stock							
Quill	ø mm	54	75 / 80 ²	105	105 / 125 ²	125 / 165 ²	125 / 165 ²
Quill stroke	mm	100	150	225	225	275	275
Quill taper	MT	4	5	5	5 / 6 ²	6	6
General							
Weight	kg	2000	2700 / 3250	4700 / 5700 / 6800 / 7900		6800 / 8200 / 9000 / 10000	
Machine dimensions (l/w/h)	m	2.5 x 1.8 x 1.8	3.2 x 1.8 x 1.8 ⁽¹³⁵⁰⁾ 3.7 x 1.8 x 1.8 ⁽¹⁸⁵⁰⁾	3.1 x 2.3 x 2.2 ⁽⁹⁰⁰⁾ 4.1 x 2.3 x 2.2 ⁽¹⁹⁰⁰⁾ 5.1 x 2.3 x 2.2 ⁽²⁹⁰⁰⁾ 6.1 x 2.3 x 2.2 ⁽³⁹⁰⁰⁾		4.5 x 2.8 x 2.4 ⁽²²⁰⁰⁾ 5.5 x 2.8 x 2.4 ⁽³²⁰⁰⁾ 6.3 x 2.8 x 2.4 ⁽⁴⁰⁰⁰⁾ 7.3 x 2.8 x 2.4 ⁽⁵⁰⁰⁰⁾	
Options							
Automatic gear change		-	-	standard	standard	standard	standard
Automatic chip conveyor	option	option	option	standard	standard	standard ³	standard ³
Automatic tool changer	option	option	option	option	option	option	option
Spindle indexing	-	-	-	option	option	option	option
Automatic tool changer with driven tools	-	-	-	option	option	option ⁴	option ⁴
Steady rest (3 points)	ø mm	10-300	20-150 / 10-300	50-300 / 60-400	50-300 / 60-400	50-380 / 380-650 / 650-800 ⁽¹²⁰⁰⁾	
Steady rest (2 points)	ø mm	-	-	-	380-500	470-700	470-700

¹ With heavy tail stock dbc is 1200/1700 ² Possible with heavy duty tail stock

³ Two standard chip conveyors ⁴ Automatic changer at front of X-support

STYLE CNC Machines BV reserves the right to alter specifications without prior notice © 2017 STYLE CNC Machines BV



CHESTER MACHINE TOOLS



STYLE CNC Machines NL

- Nijverheidsweg 15
- 3751 LP Bunschoten, The Netherlands
- info@stylecncmachines.com
- +31 (0)33 - 20 525 00



STYLE CNC Machines CZ

- Stanovice 37
- 544 01 Dvůr Králové nad Labem, Czech Republic
- info@stylecncmachines.cz
- +420 499 421 713



STYLE CNC Machines PL

- ul. Zuzanny 34
- 41-219 Sosnowiec, Poland
- info@stylecncmachines.pl
- +48 883 444 723



STYLE CNC Machines BE

- Vlierstraat 5
- B-8790 Waregem, Belgium
- info@stylecncmachines.be
- +32 497 322 109



STYLE lathe

The best lathe for single pieces and small series

Correspondence United Kingdom
Chester Machine Tools UK
Midlands Office
Unit 4 Plant Lane Business Park

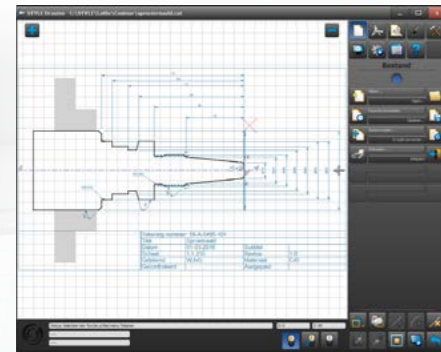
Plant Lane
Burntwood
Staffordshire
WS7 3GN

T 01543 448940
E sales@chestermachinetools.com
I www.stylecncmachines.com

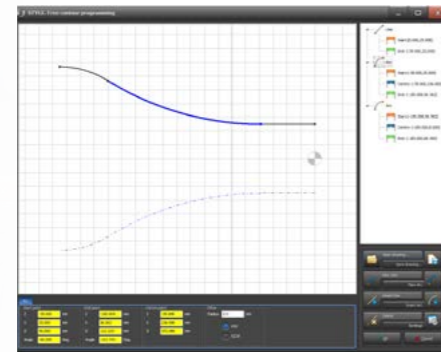
Machinebuilders since 1991

STYLE lathe

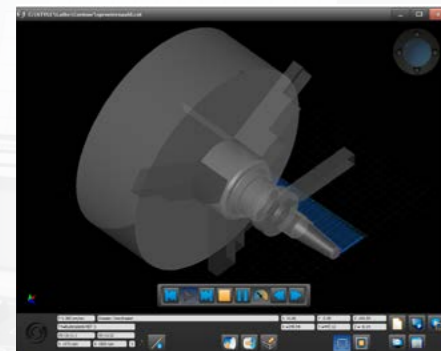
The best lathe for single pieces and small series



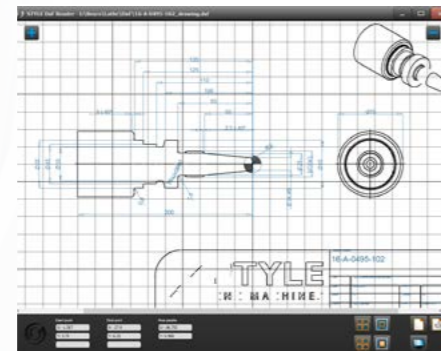
Easy and fast programming



Free contour drawing with a minimum of values



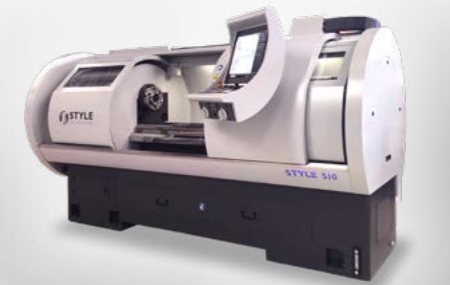
3D simulation for testing and time calculation



DxF import from CAD software



STYLE 350



STYLE 410



STYLE 750



STYLE 1200

Easy, smart and simple programming

- Extensive CNC functionality
- 3D simulation program
- Graphic interface on 19" touchscreen
- DxF files import
- Free contour drawing with a minimum of values
- ISO G-codes import, edit and execute
- Easy to learn and use

- Shortcuts and key codes for faster working
- Execute of large G-code programs
- Program with an extensive intuitive control without any G-code knowledge
- Thread repair and prototyping
- Desktop prep version

The best lathe for small series

- For single pieces and small series
- Easy and intuitive control
- Modern and ergonomic design
- 6 models with diameters from 350 mm up to 1200 mm
- Distance between centers 850 mm up to 5000 mm
- Double prism and accurate guides
- Stable castiron frame
- Fully enclosed machine, CE approved
- Optimal accessibility and operational ease
- Complete Dutch design and development
- Produced and controlled from Holland
- Several options possible

Machinebuilders since 1991