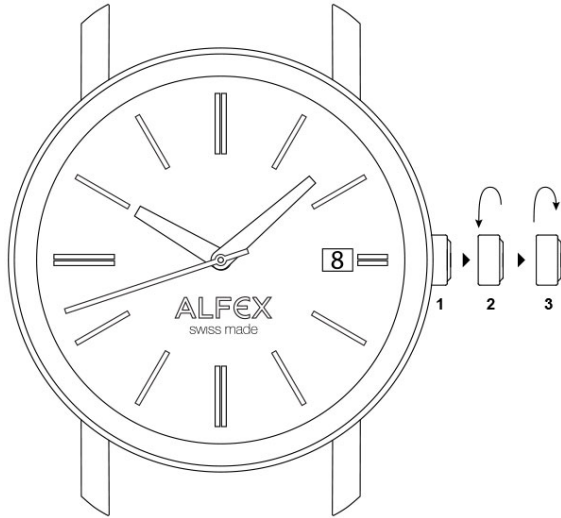


**ALFEX**  
swiss made

user manual

# 3 hands and calendar



## setting the time

1. pull out the crown to position 3 (the watch stops)
2. turn the crown clockwise until you reach the correct time
3. push the crown back into position 1

## setting the date

1. pull out the crown to position 2 (the watch continues to run)
2. turn the crown counter-clockwise until the previous day date appears
3. pull out the crown to position 3 (the watch stops)
4. turn the crown clockwise. as you pass 0:00 hours (midnight), the date will change to the current date, continue to turn the crown until you reach the correct time.
5. push the crown back into position 1

## warning notice

do not change the date between the hours of 10 p.m. and 2 a.m.  
this is the time when the movement is in the position to carry out the automatic date change, and any interference may cause damage to the movement

alfex sa

via cantonale  
centro galleria 3  
6928 manno  
switzerland

P. +41 91 612 22 90

F. +41 91 612 23 09

[info@alfex.ch](mailto:info@alfex.ch)

[alfex.ch](http://alfex.ch)

[facebook.com/alfexswiss](https://facebook.com/alfexswiss)

[twitter.com/alfex\\_swissmade](https://twitter.com/alfex_swissmade)