

GRIFFIN 61" CAST IRON SLIPPER TUB

Cat. No.
CTSH60



L: 61 1/4"
W: 30 1/4"
H: 21 1/2" & 31" (from floor to top of tub)
15 1/2" & 23 3/4" (from bottom of tub to top of tub)



The following is recommended for CTSH60 tubs with deck holes:

- Rim-mounted faucet: part #4601
- Complete shower unit: part# 4063
- Straight bath supplies: part #5577
- Leg tub drain: part #5599

Do Not use with rigid, freestanding supplies.

Gallon Capacity: 43
Shipping Weight: 500 lbs.
Empty Weight: 300 lbs.
Filled Weight: 659 lbs.

Features:

- ▶ Inside finish is white enamel
- ▶ Cast iron ball and claw feet available in 8 finishes or unfinished
- ▶ Tub exterior is white (epoxy)
- ▶ 7" centers in tub deck
- ▶ Non-skid strips
- ▶ Feet attached and leveled before shipment
- ▶ Tub is thoroughly inspected before shipment

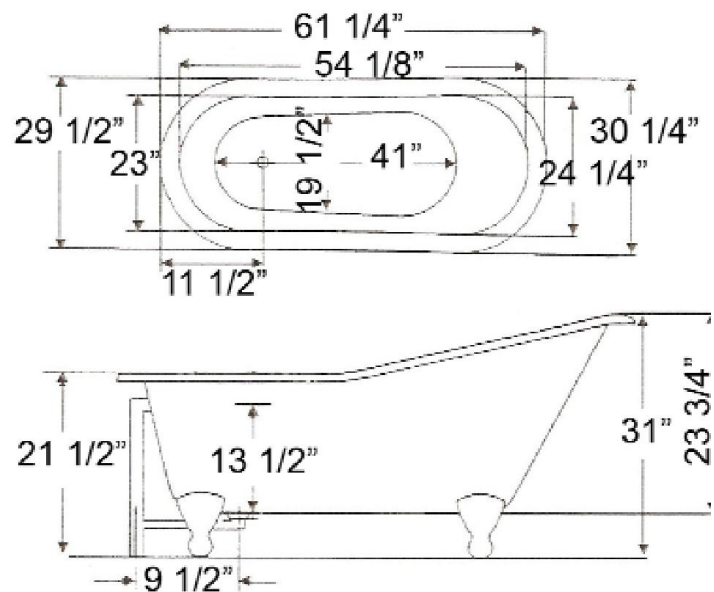


Meets or exceeds the following specifications: A112-19-1M 1994.

Foot Finishes:

- | | |
|---------------------------|------------------------------|
| BL Black | PB Polished Brass |
| BQ Bisque | ORB Oil-rubbed Bronze |
| CP Polished Chrome | SN Brushed Nickel |
| PN Polished Nickel | WH White |

Custom Colors Available (inside of tub is always white enamel):
Painted bathtubs are considered "special order" and are not returnable
\$160 Bisque or Black \$250 Designer Color



Dimensions of fixture are nominal and may vary within the range of tolerances established by ANSI Standard A112.19.1M. Dimensions and specifications subject to change without notice.