

**ADDISON  
48" CAST IRON  
ROLL TOP TUB**

Cat. No.  
CTRH49



**BARCLAY**



L: 48"  
W: 30"  
H: 20-1/2" (from floor to top of tub)  
16-1/2" (from bottom of tub to top of tub)

Depth: 12" to overflow  
14 1/2" at Drain

**The following is recommended for CTRH49 tubs with faucet holes:**

- Tub wall-mounted faucets or hand-held showers: part# **4022, 4025, 4035**
- Tub wall-mounted faucets for use with risers: part# **4001, 4013, 4023, 4030, 4031**
- Double offset bath supplies: part #**5576**
- Leg tub drain: part #**5599**
- Complete shower unit: part# **4124, 4143**

Gallon Capacity: 29  
Shipping Weight: 413 lbs.  
Empty Weight: 233 lbs.  
Filled Weight: 484 lbs.

**Features:**

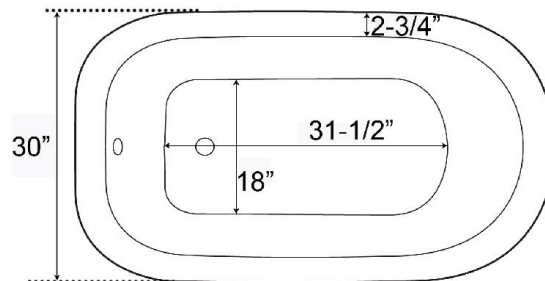
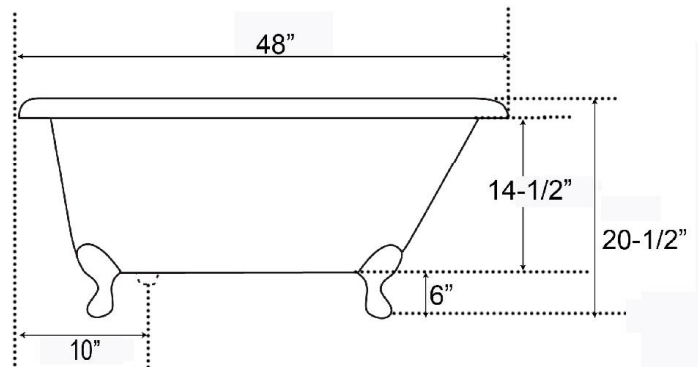
- ▶ Inside finish is white enamel
- ▶ 3 3/8" centers in tub wall
- ▶ Pre-drilled overflow hole
- ▶ Tub exterior is enamel
- ▶ Cast Iron ball and claw feet available in 6 finishes
- ▶ Feet are attached and leveled before shipment
- ▶ Tub is thoroughly inspected before shipment



**Foot Finishes:**

- |                           |                              |
|---------------------------|------------------------------|
| <b>BN</b> Brushed Nickel  | <b>ORB</b> Oil-Rubbed Bronze |
| <b>CP</b> Polished Chrome | <b>PB</b> Polished Brass     |
| <b>WH</b> White           | <b>PN</b> Polished Nickel    |

**Custom Colors Available** (inside of tub is always white enamel):  
Painted bathtubs are considered "special order" and are not returnable  
\$160 Bisque or Black \$250 Designer Color



Dimensions of fixture are nominal and may vary within the range of tolerances established by ANSI Standard A112.19.2. Dimensions and specifications subject to change without notice.