

63" PASCAL ACRYLIC OVAL TUB

Cat. No.
ATOVN63EIG-XX



L: 63"
W: 31-5/8"
H: 23-1/2"

Water depth: 18-3/4" to top of tub
Water depth: 15-5/8" to overflow
Overflow hole diameter: 3" x 1/2"
Center of drain to back of rim: 15-3/4"
Bottom of drain to floor: 3-1/4"
Bathing well to floor: 4-3/4"

**The following is recommended for
ATOVN63EIG-WH:**

- Faucets: part # 7082, or #7088
- Rigid, freestanding supplies: part #4502
- Freestanding filler: part #7902 or #7934
(Supplies included with filler)



**For easier installation we
recommend use of 5598-ITD
Easy Install Rough In Kit**

Gallon Capacity with OF: 61
Shipping Weight: 140 lbs.
Empty Weight: 80 lbs.
Filled Weight with OF: 589 lbs.

Features:

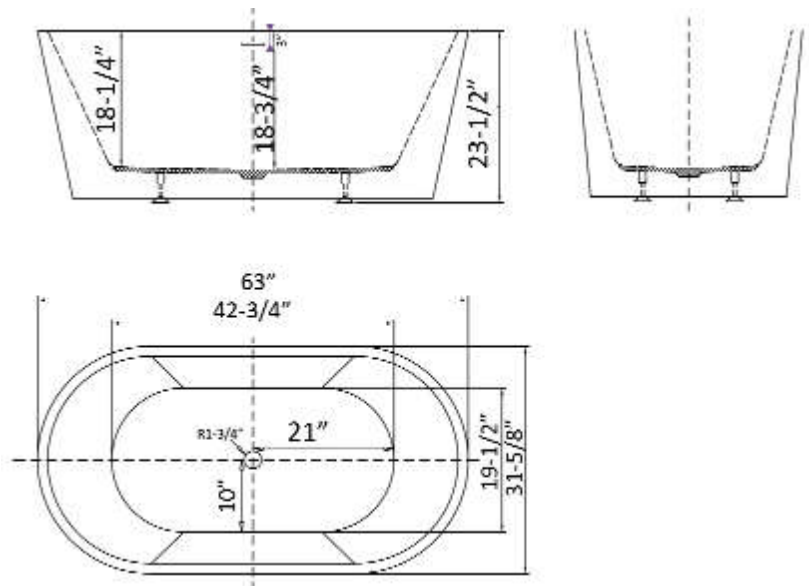
- ▶ Acrylic construction for lighter weight
- ▶ Sleek contemporary design
- ▶ Drain and overflow covers included(available in 6 finishes)
- ▶ Rim measurement: 1-1/2"
- ▶ Overflow slot with integrated drain
- ▶ Drain included
- ▶ No faucet holes
- ▶ Includes build-in adjusters
- ▶ Angle slope of tub: 26°
- ▶ Tub is thoroughly inspected before shipment
- ▶ IAMPO certified
- ▶ Option to add insulation between tub walls available



Finishes:

WT	White
CP	Polished Chrome
BN	Brushed Nickel
PN	Polished Nickel
ORB	Oil Rubbed Bronze
PB	Polished Brass

Custom Colors Available (inside of tub is always white enamel):
Painted bathtubs are considered "special order" and are not returnable
\$160 Bisque or Black \$250 Designer Color



Dimensions of fixture are nominal and specifications subject to change without notice.