

**63" MONTERREY  
ACRYLIC DOUBLE  
SLIPPER TUB**

Cat. No.  
ATDSN63RB



L: 63"  
W: 28-1/2"  
H: 28-3/8"

Depth: 15-1/2" to top of tub

**Features:**

- ▶ Interior and exterior walls acrylic sheets
- ▶ Space between walls partially filled with fiberglass & resin
- ▶ No faucet holes
- ▶ Continuous rolled rim
- ▶ No overflow
- ▶ Built-in adjusters included
- ▶ Tub is thoroughly inspected before shipment

**Compliance Certification**

Meets or exceeds the following specifications: ASME A112.19.2 2013 and CSA B45.1-13 for ceramic plumbing fixtures.



**Custom Colors Available** (inside of tub is always white enamel):  
Painted bathtubs are considered "special order" and are not returnable  
\$160 Bisque or Black \$250 Designer Color

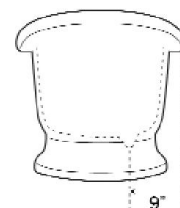
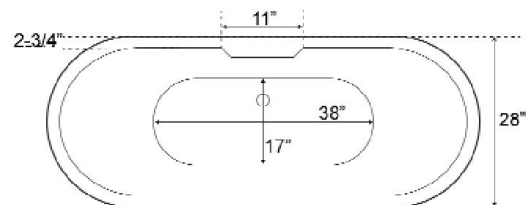
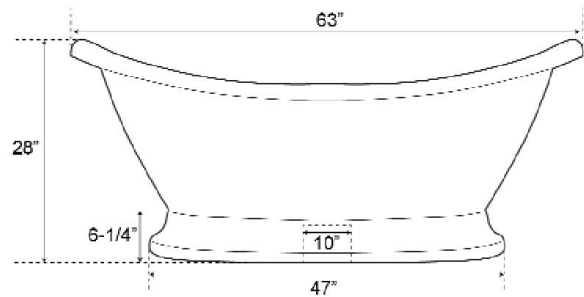
**The following is recommended for ATDSN tubs:**

- Faucets: #4602, #4063 or #4604
- Freestanding Bath Supplies: #4502
- Freestanding Faucets: #7920, 7924, or 7918 (Do Not Need Bath Supplies)
- Leg tub drain: part #5599LT or #5599TS



Overflow can be drilled. With overflow drilled this tub requires drain **5599**. **Tubs that have been drilled with overflow are "special order" and are not returnable.**

Gallon Capacity: 43  
Shipping Weight: 296 lbs.  
Empty Weight: 100 lbs.  
Filled Weight: 459 lbs.



Dimensions of fixture are nominal and specifications subject to change without notice.