



CHEMICAL MORTAR
CM350P



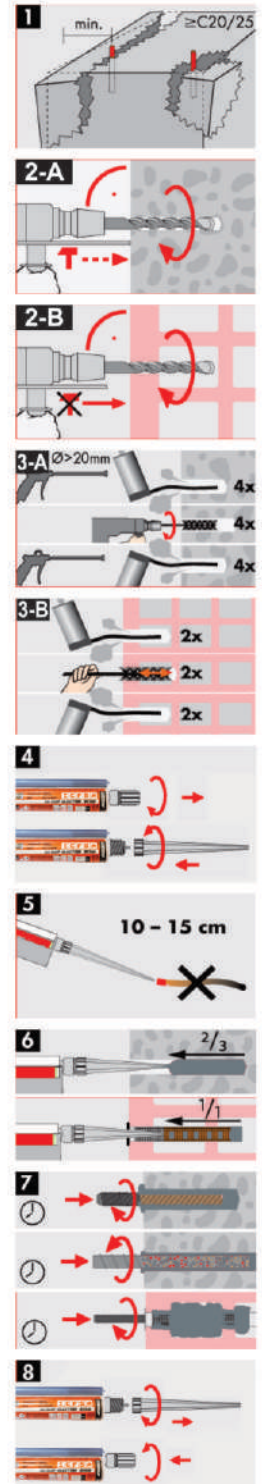
Chemical Mortar CM 350P

Polyester Styrene Free

A two component chemical anchoring injection system. A formulation derived from polyester resin with high bond strength, developed principally to anchor threaded rods into concrete, and for masonry and hollow wall installations.

Characteristics

- Suitable for medium loads for non-critical applications.
- Fast working times for early loading in time sensitive applications.
- Use in outdoor environments and fixing holes.
- Extremely versatile in masonry, hollow, aerated concrete.
- Crack and gap filling repairs in concrete vertical or horizontal.
- 10:1 resin available in a variety of cartridge types.



CHEMICAL MORTAR CM350P



Variant 350ml co-axial 10:1 ratio cartridge
Material Polyester Styrene Free

°C	Typical Gel Time
≥ 0 °C	45 min
≥ +5 °C	25 min
≥ +10 °C	15 min
≥ +20 °C	6 min
≥ +30 °C	4 min
≥ +35 °C	2 min
≥ +40 °C	1,5 min

Product code	Content (ml)	Colour when mixed	Package content
CM350 P	350	grey	6



ICFS Chemical Production Unit



Anchorage in concrete with Rebar CM350 P

High bond Reinforcing Bars FYK = 500N/mm²

Rebar Diameter (mm)	Drill Hole Diameter (mm)	Design Resistance (N _{rd})														Steel failure load (kN)
		(kN)														
8	8-12	4.3	5.6	6.1	7.1	8.1	9.2	10.5	12.1	13.9	15.8					21.9
10	12-14	5.1	6.9	7.1	8.2	9.3	10.7	12.4	14.2	16.4	18.8	20.2	22.8			34.1
12	14-16	6.3	7.2	9.6	10.1	11.1	12.2	13.3	14.8	17.2	19.7	21.5	24.7	27.2	29.8	49.2
Depth (mm)		70	80	90	100	110	120	130	140	150	160	200	240	280	320	
16	18-20	10.6	12.9	14.2	17.4	20.1	24.5	26.9	29.6	32.6	35.9					87.4
20	25	11.4	13.5	15.9	18.7	22.1	26.5	29.1	31.9	35.2	38.8	42.7				136.6
25	30			17.5	20.5	24.2	28.5	33.6	40.3	48.3	58.1	69.6	83.6			196.5
Depth (mm)		80	100	120	140	160	200	240	280	300	320	400	480	540		

High bond Reinforcing Bars FYK = 500N/mm²

Rebar Diameter (mm)	Drill Hole Diameter (mm)	Recommended Resistance (N _{rd})														
		(kN)														
8	8-12	1.1	3.2													
10	12-14	2.7	3.8	4.8	5.7	6.8	7.7	8.9								
12	14-16	3.1	4.1	5.1	5.9	7.1	8.2	9.1								
Depth (mm)		70	80	90	100	110	120	130	140	150	160	200	240	280		
16	18-20	5.8	7.2	9.1	10.9	13.1	15.7	18.8	20.9	22.8	27.3					
20	25	6.5	8.2	10.3	11.5	14.4	16.2	19.4	21.7	23.5	28.4	32.8				
25	30			11.1	12.2	15.3	17.1	20.6	22.8	25.1	30.2	34.4	41.2			
Depth (mm)		80	100	120	140	160	200	240	280	300	320	400	480	540		

Anchorage in concrete with Threaded rod 5.8 grade CM350 P

5.8 Grade Studing

Rebar Diameter (mm)	Drill Hole Diameter (mm)	Design Resistance (N _{rd})														Steel failure load (kN)
		(kN)														
8	10	5.3	6.1	7.3	8.7											12.7
10	12		6.9	9.1	11.5											20.1
12	14		7.2	9.6	12.1	15.6	19.5									29.2
Depth (mm)		70	80	90	100	110	120	130	140	150	160	200	240	280		
16	18	9.6	12.9	17.2	21.5	26.8	29.8									54.4
20	24		16.7	20.9	24.1	27.1	31.1	35.7	41.3							84.9
24	28		19.8	23.7	28.8	30.9	34.5	39.5	45.4	51.1	56.8	62.5				122.4
Depth (mm)		80	100	120	140	160	200	240	280	300	320	400	480	540		

5.8 Grade steel Studying

Rebar Diameter (mm)	Drill Hole Diameter (mm)	Recommended Resistance (N _{rd})														
		(kN)														
8	10	3.5	4.4													
10	12	4.1	5.8	6.6	7.3											
12	14	4.8	6.4	7.28	8.01	8.9										
Depth (mm)		70	80	90	100	110	120	130	140	150	160	200	240	280		
16	18	6.9	9.2	12.3												
20	24	7.8	10.1	13.1	15.3	18.1	21.7	26.4								
24	28		11.3	14.2	16.6	19.6	23.1	27.7	33.2	39.9	47.8	57.4				
Depth (mm)		80	100	120	140	160	200	240	280	300	320	400	480	540		



CHANNEL PARTNER



CORPORATE OFFICE

198, E ward, Tararani Chowk,
Near Geeta Mandir,
Kolhapur-416 003 (Mah. India)
Tel.: 0231-2653908.
Email : mail@indospark.com

BRANCH

Islampur | Pune | Mumbai



FOLLOW US



www.shop.indospark.com