

DAVCO

DESCRIPTION

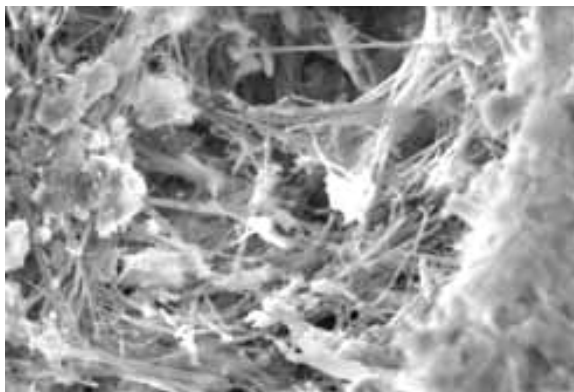
DAVCO K11 CWA (Crystalline, Waterproofing Admixture) is a special cementitious mix of active chemicals that readily reacts with moisture in the concrete to form crystalline structures within the pores and capillary tracts of the concrete. **Davco K11 CWA** effectively waterproofs the concrete against ground water penetration from any direction, protecting against waterborne salts and eliminating concrete decay.

DAVCO K11 CWA, an integral waterproofing system that gives a strong and lasting protection from harsh environmental conditions, is ideal for interior and exterior below grade concrete structures.

As conditions on projects site and temperature varies, please contact technical professionals for advice on the use of **DAVCO K11 CWA** for your specific project.

ADVANTAGES

- Long lasting integral waterproofing system
- Self healing, crack sealing characteristics
- Resists extreme hydrostatic pressure
- Protects concrete from harsh conditions
- Cost effective and process friendly system
- Non-toxic and resistant to waterborne chemicals
- No detrimental effect to the performance of the concrete when recommended conditions are met



Scanning Electron Microscope Photograph, at 2000x Magnification.

TECHNICAL DATA

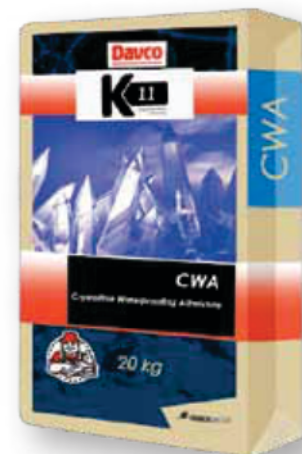
Water Permeability < 20 mm
BS EN 12390-8/
DIN 1048.5

Water Soluble Chloride < 0.2 %
content (EN 480-10)

Suitable pH range 3-11

Concrete setting time is subject to the chemical and physical ratio of the mix in conjunction with site conditions and temperature. The mix design and dosage should be tailored in conjunction with the **DAVCO K11 CWA** admixture recommendations. Trial mixes should be conducted under the condition to determine the setting time and strength of the concrete.

Specifications are subject to change without notification. Results shown are typical but reflect test procedures used. Actual field performance will depend on installation methods and site conditions.



DAVCO

AREAS OF APPLICATION

- Foundations
- Sewage Treatment plants
- Tunnels and subway systems
- Underground structures
- Dams
- Pre-cast structures
- Swimming pools and reservoirs

DOSAGE RATE

Recommended dosage is between 0.8% -1.0% by the weight of cement.

ADMIXTURE DOSING

DAVCO K11 CWA is to be added to the concrete during the batching process.

For ready mix plant batching, **DAVCO K11 CWA** added directly into the mixing drum and batch in accordance with standard practices.

In all cases, total quantity of water to be added in the design mix should take into consideration the amount of moisture from aggregate and sand on site.

SHELF TIME

Up to 12 months in unopened container and stored in a cool dry place.

PACKAGING

20 kg bag

HEALTH & SAFETY

Product contains cement, which may cause dermatitis. Wear rubber gloves when handling the product. In case of insufficient ventilation, put on suitable respiratory equipment. Do not apply the product when the surface temperature is below 5°C or greater than 45°C. Product is classified as non-hazardous.

DISCLAIMER

The use of this product is beyond the manufacturer's control, and liability is restricted to the replacement of material proven faulty. The manufacturer is not responsible for any loss or damage arising from incorrect usage. All workmanship must be carried out in accordance with ParexGroup's specific instructions.

The information contained herein is to the best of our knowledge true and accurate. No warranty is implied or given as to its completeness or accuracy in describing the performance or suitability of the product for a particular application. Users are asked to check that the literature in their possession is the latest issue.

