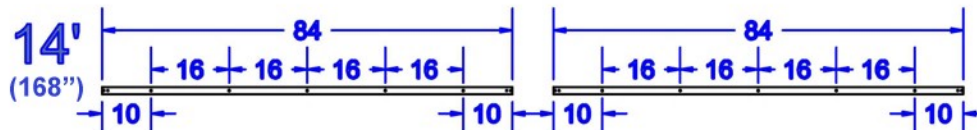
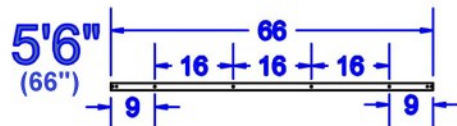
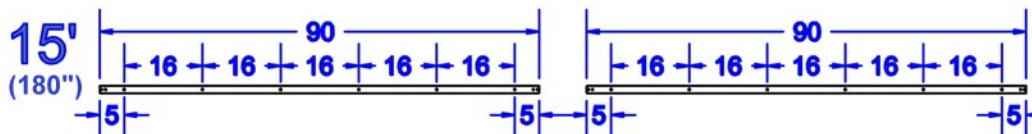
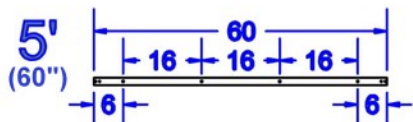
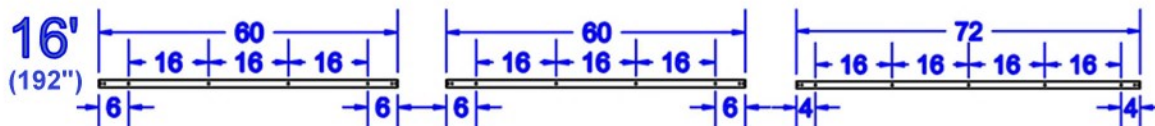
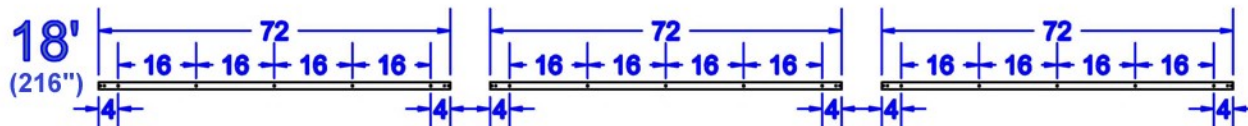
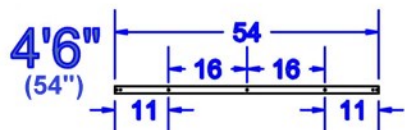
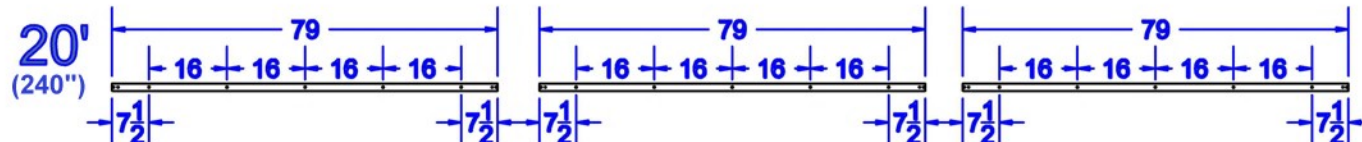
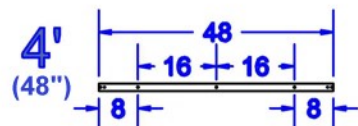


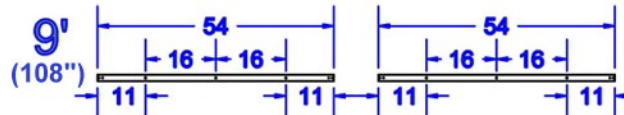
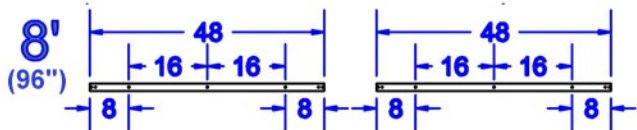
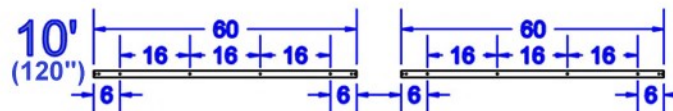
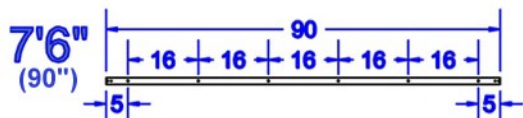
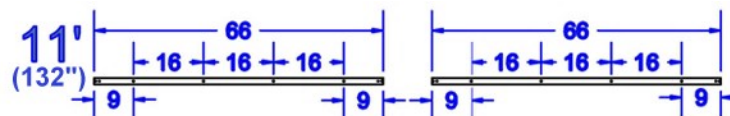
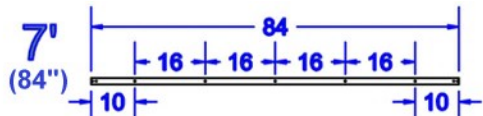
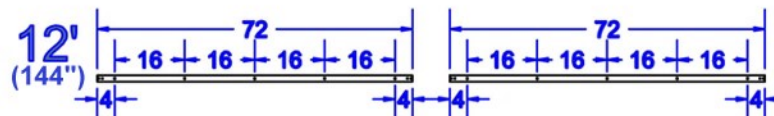
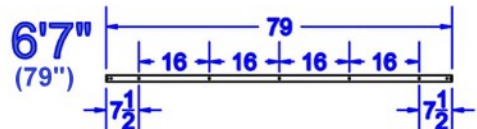
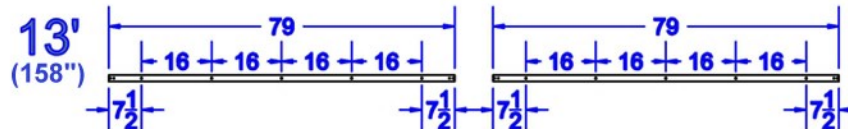
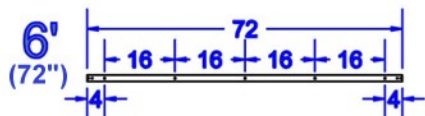
Note: Measurements are in inches.

**RUSTIC**  
ROLLING DOORS

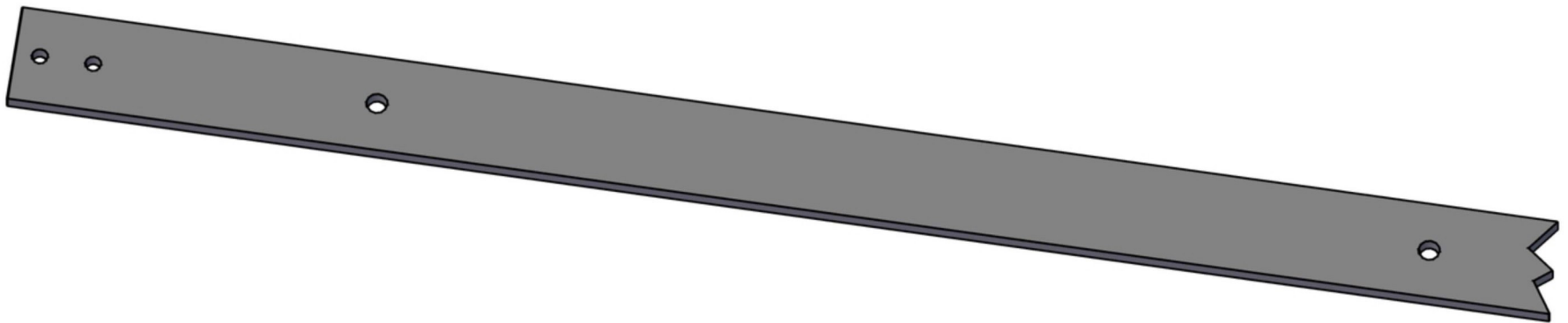
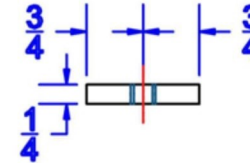
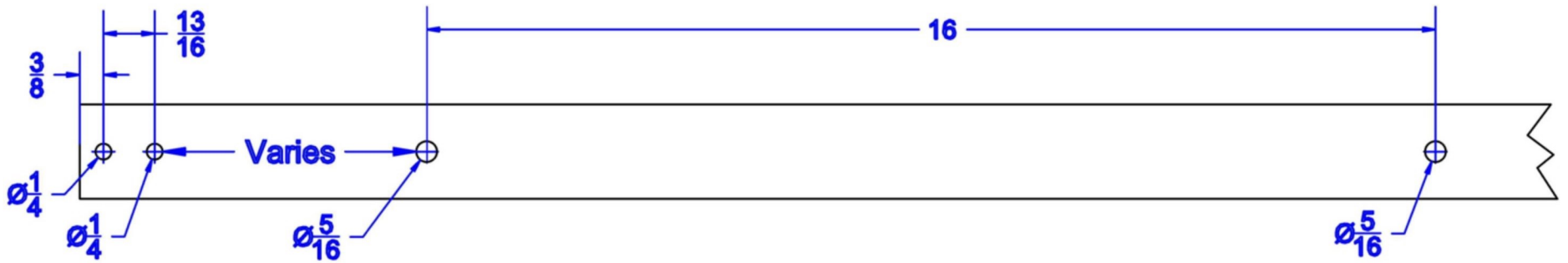
Part: Mustache



Note: Measurements are in inches.



Note: Measurements are in inches.

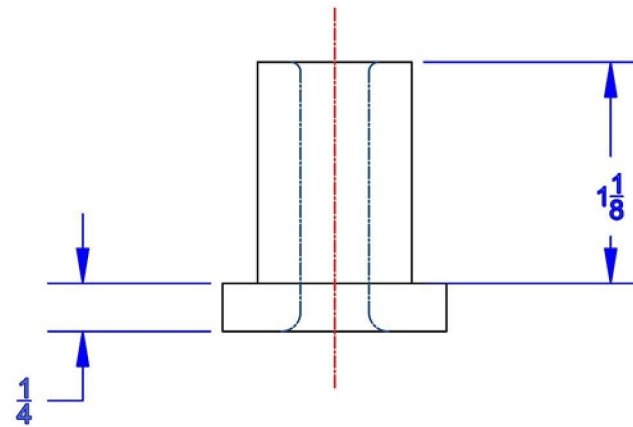
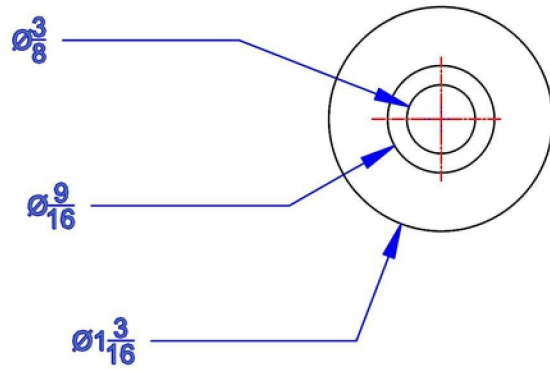
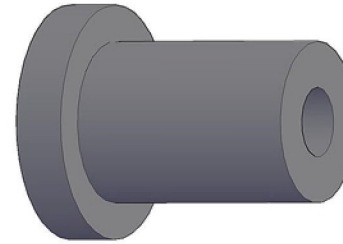
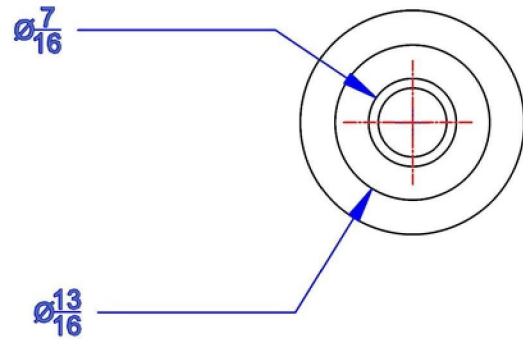


Note: Measurements are in inches.

**RUSTIC**  
ROLLING DOORS

Part: Track

Scale: 1:1

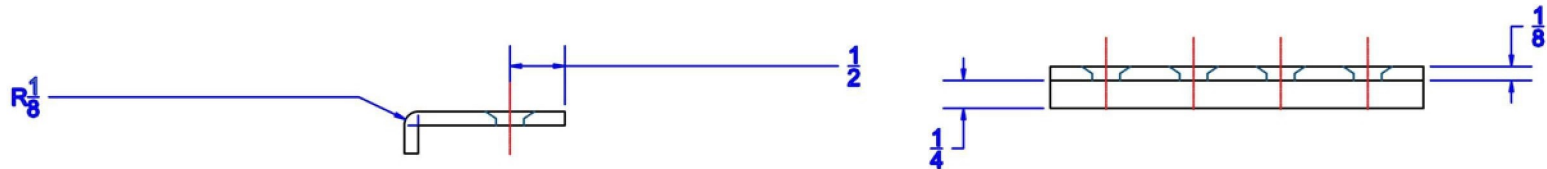
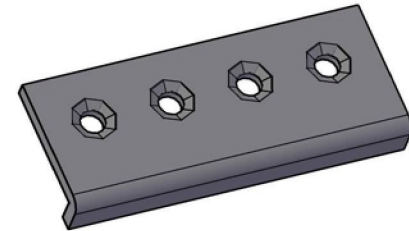
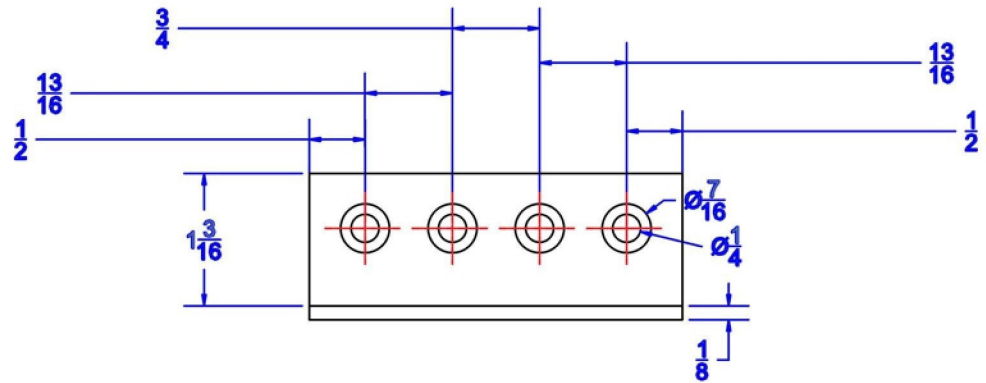


Note: Measurements are in inches.

**RUSTIC**  
ROLLING DOORS

Part: Spacer

Scale: 1:1



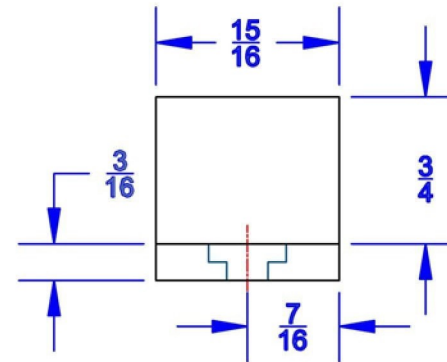
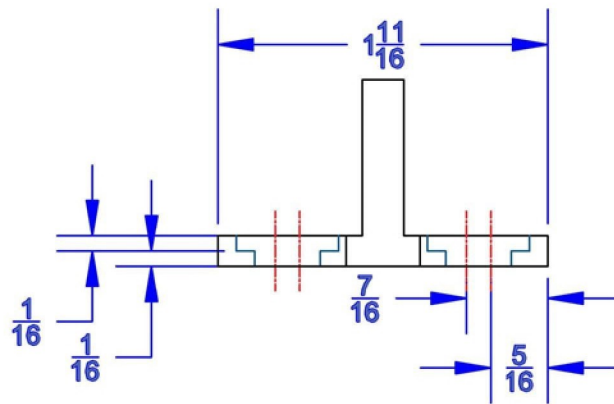
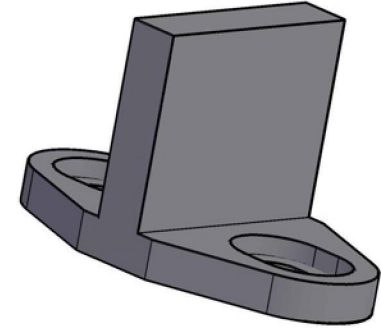
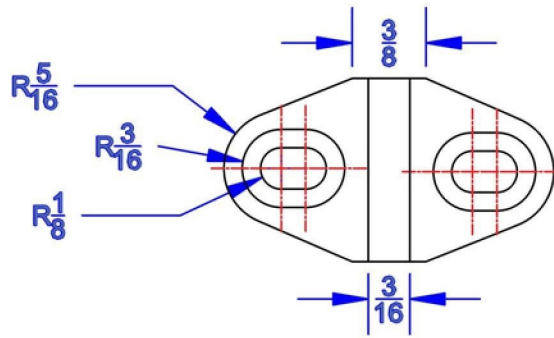
NOTE:  
 Supplied with the following:  
 4 - Flat Head Hex (Allen) Screws  
 4 - 6 mm Nuts  
 1 - 4 mm Hex (Allen) Wrench

Note: Measurements are in inches.

**RUSTIC**  
 ROLLING DOORS

Part: Junction Plate

Scale: 1:1



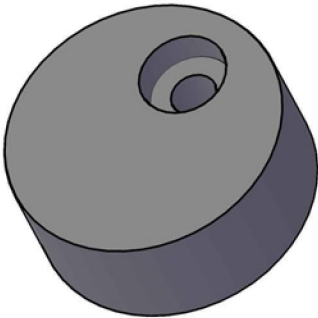
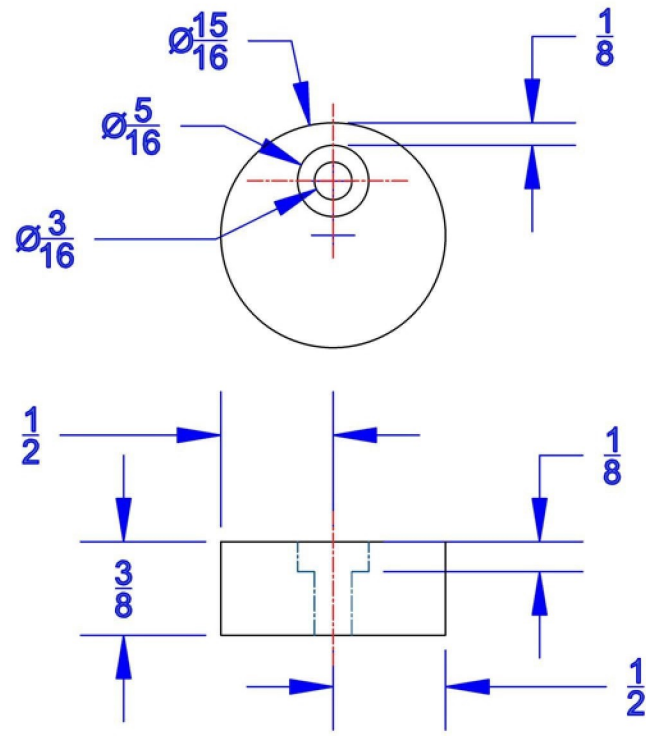
NOTE:  
 Supplied with the following:  
 2 - 1" #8 Sheet Metal Screw  
 2 - 1-3/16" (6 x 30) Plastic Anchor

Note: Measurements are in inches.

**RUSTIC**  
 ROLLING DOORS

Part: Floor Guide

Scale: 1:1



NOTE:  
 Supplied with the following:  
 1 - 3/4" #7 Wood Screw

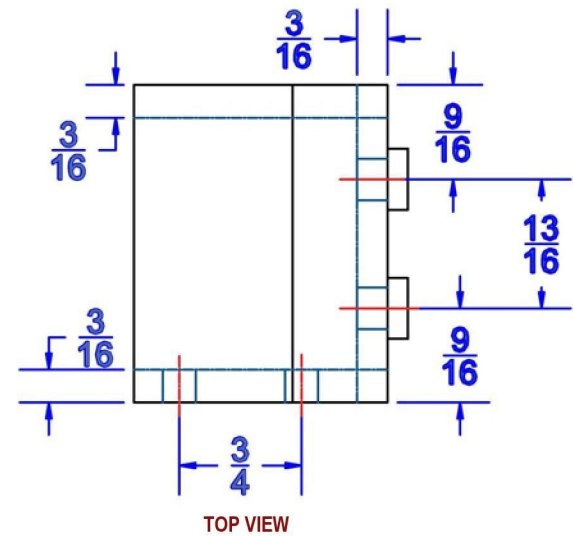
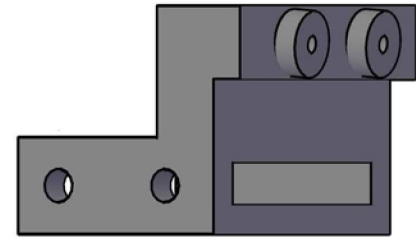
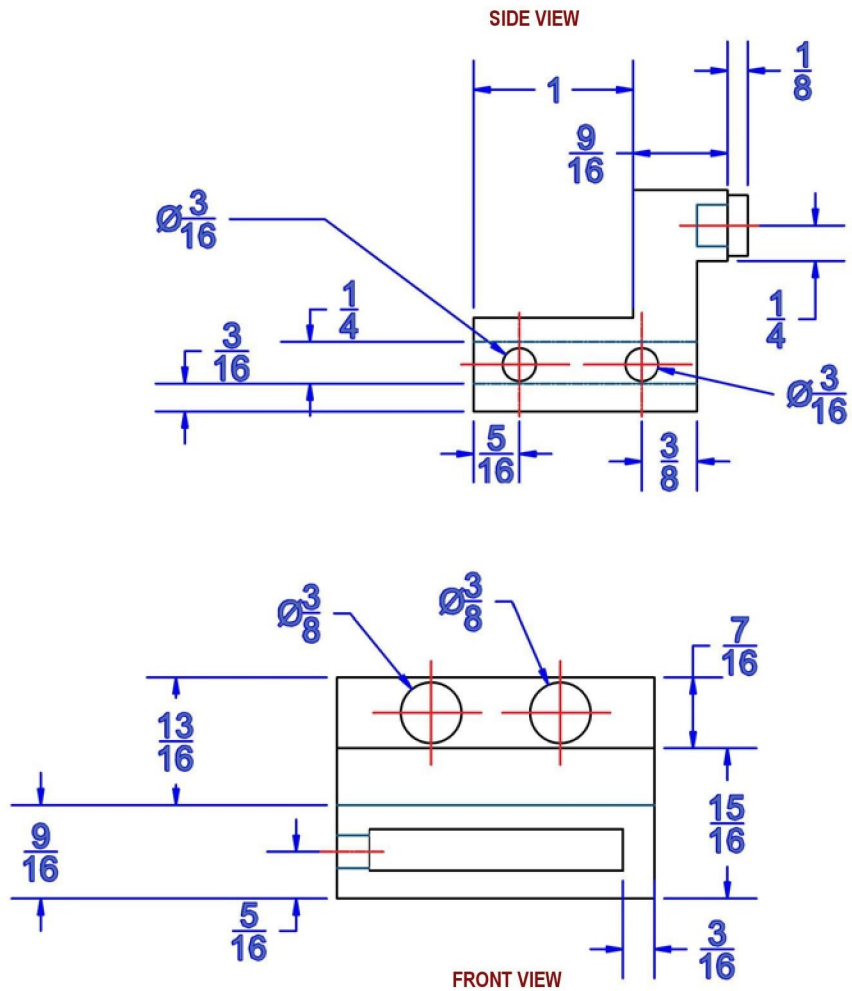
Note: Measurements are in inches.



Part: Anti-Jump Pad

Scale: 1:1





NOTE:  
 Supplied with the following:  
 2 - 1/4" (M6 x 6) Set Screw  
 1 - 3mm Hex (Allen) Wrench

Note: Measurements are in inches.

**RUSTIC**  
 ROLLING DOORS

Part: Door Stopper

Scale: 1:1