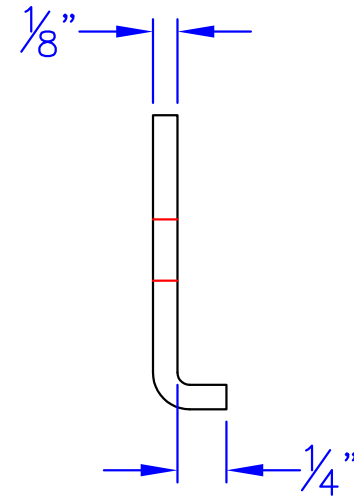
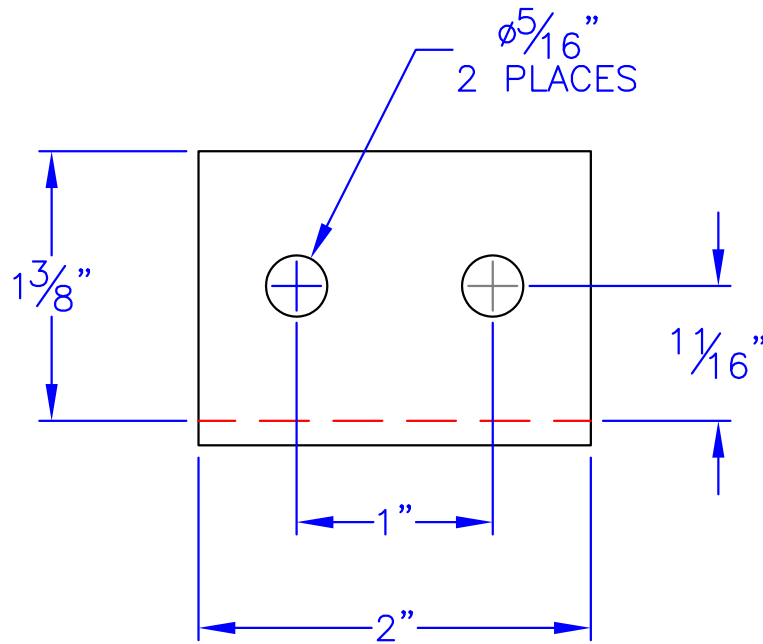


NOTE: SUPPLY w/ 2 EA. $\phi 1/4$ "-20 x $3/8$ " RHMS
(BLACK OXIDE FINISH)



PART # FINISH NOTE:
 XXXX-00XX = BLACK
 XXXX-25XX = UNFINISHED
 XXXX-27XX = CLEAR COAT
 XXXX-30XX = MP109
 XXXX-40XX = STAINLESS
 XXXX-50XX = SS BRUSH
 XXXX-60XX = RUST
 XXXX-70XX = FBPC
 XXXX-80XX = BRONZE
 XXXX-90XX = BR. NICKEL

MATERIAL: HF $1/8$ "x2" x $1 1/16$ " LONG
 PART #: 0419-0343

Leatherneck
 Hardware, Inc.
 1017 Bahls St. - Danville, IL 61832

THIS PRINT IS THE PROPERTY OF LEATHERNECK HARDWARE, INC. AND IS LOANED TO THE RECIPIENT SUBJECT TO RETURN UPON DEMAND. ALL CONTENTS HEREIN ARE CONFIDENTIAL AND MUST NOT BE COPIED OR SUBMITTED TO OUTSIDE PARTIES FOR EXAMINATION WITHOUT THE EXPRESS WRITTEN CONSENT OF LEATHERNECK HARDWARE, INC.

PART #: 0115-XX21
 CUSTOMER: -
 DESCRIPTION:
 SPLICE PLATE - #142 TRACK
 -

JOB #: -
 QUANTITY: EACH

DRAWN BY: MICHAEL H
 DATE: //

DRAWING #: 0115-XX21