

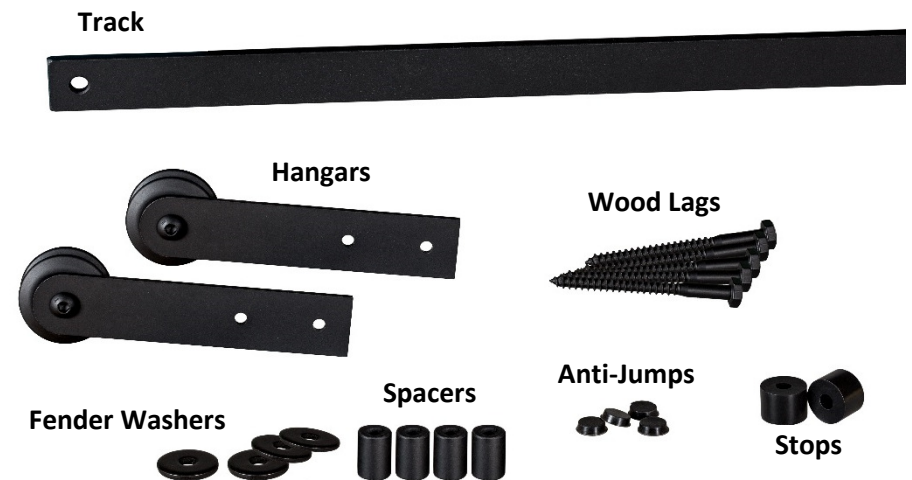
7. Hang The Shutter

- Once the hangers are fastened down, place the shutter on the track.
- Peel & stick the provided Anti-jumps onto the top of the shutter in-between it and the bottom of the track.
- Wall mount guides are available as well as many other accessories.



#140 Hardware Installation

Let's start by identifying all of the components and to make sure everything matches the packing slip.



1. Identify Track Header and centerline

- Track header material (wood, concrete, etc.) determines the correct header fasteners to use. Wood lags are provided, but you may need to visit your local hardware store for other header materials. You may also need to install a header if one is not present already.
- Identify where you want the top of your shutters. To find the track centerline simply add 3/4" upward from the top of the shutter.

2. Lay Out The Wall

- Using the track centerline that we found in the previous step measure from the floor up to mark the height.
- Measure horizontally 1/2" inward from the position of where you want the shutter to stop. This is the location of your 1st hole.
- Level across from the 1st hole to locate the opposing end hole of the track.
- Make sure the marks for the end holes are level across and centered to cover the opening with the panel once complete.
- Most often the track is centered over the open area.

3. Drill The End Holes

- Use a 5/32" drill bit to drill into your header for the two end holes previously located.

4. Hang The Track

- Place the Spacer on the back of the track along with Fender Washer up against the wall.
- Insert Wood Lag with the Stop on the outside of the Track.



5. Drill The Remaining Track Holes

- With the two ends of the track fastened down with the door stops installed, drill the remaining holes using the spacer as a guide.
- Insert and fasten down the Wood Lags.

6. Installing The Hangers

- Locate the position of the door hangers according to the type of hanger you have purchased.
- Once the location of the hanger holes are found and marked, drill the holes for the hangers.
- Place the hanger over the drilled holes and install the provided #10 wood screws to fasten it to the shutter.

