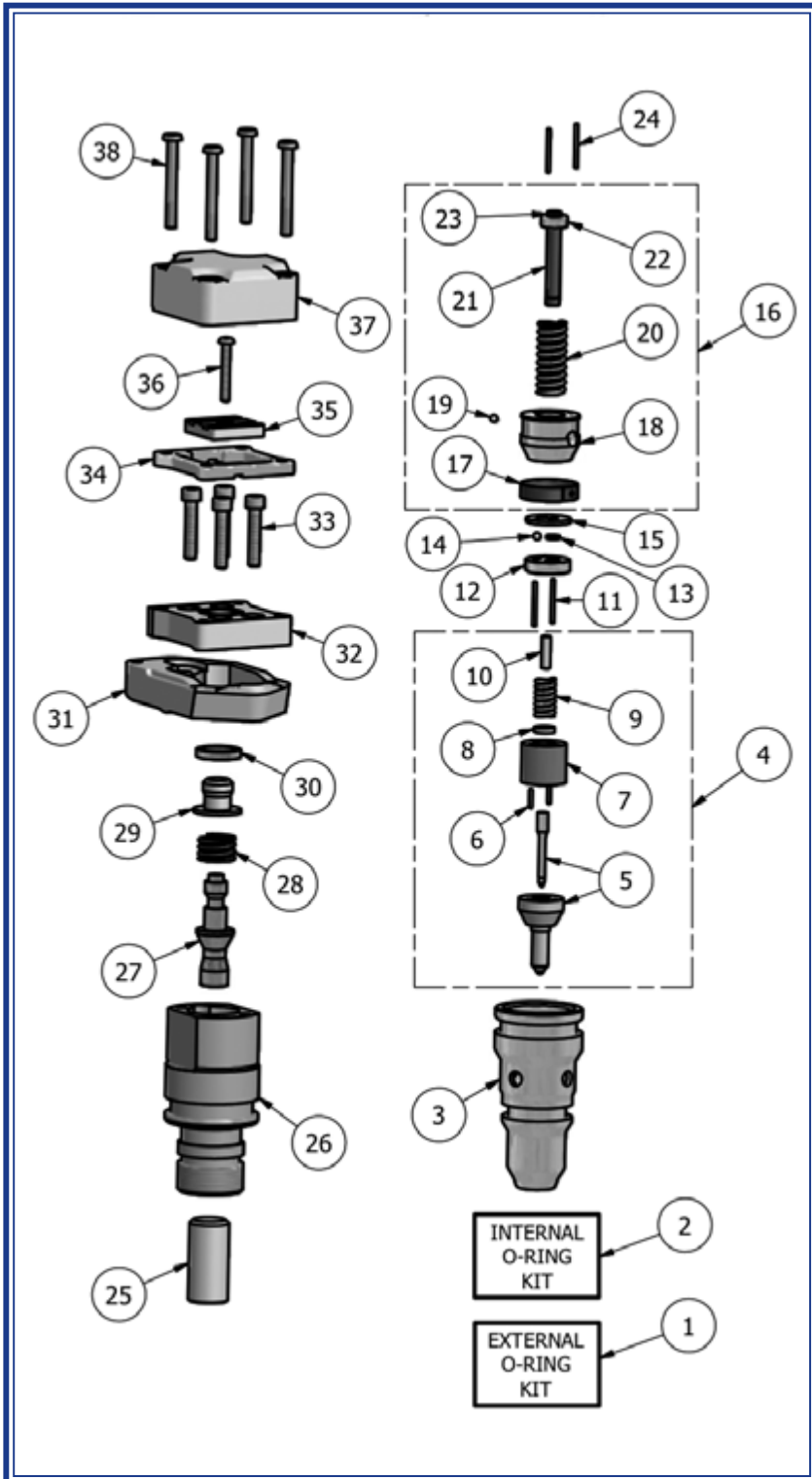




# **HEUI Fuel Injection Replacement Parts for 7.3L Powerstroke and Navistar T444E/DT466E/I530E**



# HEUI Injectors



ITEM	PART NUMBER	DESCRIPTION	QTY REQ'D.
1	MCBS0008	External O-ring Kit	1
2	See Application Chart on Next Page	Internal O-ring kit	1
3	8991079	Nut	1
4	See Application Chart on Next Page	Nozzle Group	1
5	See Application Chart on Next Page	Nozzle Assembly	1
6	8991002	Dowel Pin	2
7	8991029	Spacer Sleeve	1
8	8991028	Lift Spacer	1
9	8991027	Nozzle Spring	1
9	8991106	Nozzle Spring	1
10	8991026	Stop Pin	1
11	8991001	Dowel Pin	2
12	8991080	Stop	1
13	8991081	Check Plate	1
14	8991082	Check Ball	1
15	8991083	Stop Plate	1
16	See Application Chart on Next Page	Plunger and Barrel Group	1
17	REF	Retaining Spring	1
18	REF	Barrel	1
19	REF	Check Ball	1
20	REF	Spring	1
21	REF	Plunger	1
22	REF	Retaining Washer	1
23	REF	Retaining Ring	1
24	8991001	Dowel	2
25	See Application Chart on Next Page	Intensifier Piston	1
26	8991091	Piston & Valve Body	1
27	8991092	Poppet Valve	1
28	8991093	Poppet Spring	1
29	8991094	Sleeve	1
30	8991095	Poppet Shim	1
31	8991096	Clamp	1
32	8991097	Adapter	1
33	8991099	Assembly Screw	4
34	8991100	Solenoid Spacer	1
35	8991101	Armature	1
36	8991102	Adjusting Screw	1
37	8991103	Solenoid	1
38	8991003	Solenoid Screw	4

## Miscellaneous HEUI Items

PART NUMBER	DESCRIPTION
M-1830742C92	Seal Kit, External, Injector, Navistar DT466E, T444E,I530E
MCB0006	Kit, Chamber Gasket (Pkg of 6)
M-2421539	O-Ring Kit, Single Fuel Injector, 3126
MCB06063/31	P&B Group, 3126, 3126B
MCB07161/31	P&B Group, 3126, 3126B
MCB41006/32	Nozzle Group, 3126, 3126B
MCB41016/31	Nozzle Group, 3126, 3126B
MCB41016/32	Nozzle Group, 3126, 3126B
M-4C37-9C977-AA	Repair Kit, IPR
M-1817687C92	Water Pump, DT466E (New Generation)
M-3286277	Water Pump, 5.9L, 4-6B
M-3286278	Water Pump, 5.9L, 4-6B
M-3935878	Valve Cover Gasket, ISB5.9
M-3936316	Fuel Transfer Pump, B, 6C

## Additional Cross Reference

PART DESCRIPTION	REFERENCE NUMBER	INTERSTATE-MCBEE REFERENCE NUMBER	PART DESCRIPTION	REFERENCE NUMBER	INTERSTATE-MCBEE REFERENCE NUMBER	PART DESCRIPTION	REFERENCE NUMBER	INTERSTATE-MCBEE REFERENCE NUMBER
Nozzle Group	DPE41007/31	8991137	P&B Group	DPE06000/31	8996000	Intensifier Piston	DPS13051/31	8991117
Nozzle Group	DPE41007/31	8991137	P&B Group	DPE06060/31	8996060	Intensifier Piston	DPS13050/31	8991114
Nozzle Group	DPE41007/31	8991137	P&B Group	DPE06001/31	8996001	Intensifier Piston	DPS13052/31	8991115
Nozzle Group	DPE41007/31	8991137	P&B Group	DPE06061/31	8996061	Intensifier Piston	DPS13056/31	8991111
Nozzle Group	DPE41007/31	8991137	P&B Group	DPE06061/31	8996061	Intensifier Piston	DPS13053/31	8991110
Nozzle Group	DPE41025/31	8991155	P&B Group	DPE06001/31	8996001	Intensifier Piston	DPS13052/31	8991115
Nozzle Group	DPE41015/31	8991145	P&B Group	DPE06001/31	8996001	Intensifier Piston	DPS13052/31	8991115
Nozzle Group	DPE41005/31	8991135	P&B Group	DPE06001/31	8996001	Intensifier Piston	DPS13052/31	8991115
Nozzle Group	DPE41035/31	8991165	P&B Group	DPE07100/31	8997100	Intensifier Piston	DPS13055/31	8991113
Nozzle Group	DPE41005/31	8991135	P&B Group	DPE06060/31	8996060	Intensifier Piston	DPS13057/31	8991112
Nozzle Group	DPE41045/31	8991175	P&B Group	DPE07160/31	8997160	Intensifier Piston	DPS13054/31	8991118
Nozzle Group	DPE41006/31	8991136	P&B Group	DPE07160/31	8997160	Intensifier Piston	DPS13054/31	8991118
Nozzle Group	DPE41016/31	8991146	P&B Group	DPE07160/31	8997160	Intensifier Piston	DPS13054/31	8991118
Nozzle Group	DPE41006/31	8991136	P&B Group	DPE07160/31	8997160	Intensifier Piston	DPS13054/31	8991118
Nozzle Group	DPE41026/31	8991156	P&B Group	DPE07160/31	8997160	Intensifier Piston	DPS13054/31	8991118
Nozzle Group	DPE41036/31	8991166	P&B Group	DPE07160/31	8997160	Intensifier Piston	DPS13054/31	8991118

# HEUI Injectors

# Application Chart

ITEM	PART NUMBER	DESCRIPTION	QTY REQ'D.
#2	MCBS0007	Internal O-Ring Kits	1
	MCBS0530	Internal O-Ring Kits	1
#4	8991135	Nozzle Group	1
	8991136	Nozzle Group	1
	8991137	Nozzle Group	1
	8991145	Nozzle Group	1
	8991146	Nozzle Group	1
	8991155	Nozzle Group	1
	8991156	Nozzle Group	1
	8991165	Nozzle Group	1
	8991166	Nozzle Group	1
	8991175	Nozzle Group	1
	#5	8991035	Nozzle Assembly
8991036		Nozzle Assembly	1
8991037		Nozzle Assembly	1
8991045		Nozzle Assembly	1
8991046		Nozzle Assembly	1
8991055		Nozzle Assembly	1

ITEM	PART NUMBER	DESCRIPTION	QTY REQ'D.
#5 (cont.)	8991056	Nozzle Assembly	1
	8991065	Nozzle Assembly	1
	8991066	Nozzle Assembly	1
	8991075	Nozzle Assembly	1
#16	8996000	Plunger and Barrel Group	1
	8996001	Plunger and Barrel Group	1
	8996060	Plunger and Barrel Group	1
	8996061	Plunger and Barrel Group	1
	8997100	Plunger and Barrel Group	1
	8997160	Plunger and Barrel Group	1
#25	8991110	Intensifier Piston	1
	8991111	Intensifier Piston	1
	8991112	Intensifier Piston	1
	8991113	Intensifier Piston	1
	8991114	Intensifier Piston	1
	8991115	Intensifier Piston	1
	8991117	Intensifier Piston	1
	8991118	Intensifier Piston	1

MODEL YEAR	ENGINE	NAVISTAR INJECTOR P/N	FORD INJECTOR P/N	P&B GROUP TYPE PLUNGER OD	NOZZLE P/N ORIFICES VOP (PSI)	NOZZLE GROUP	SEAL KITS: INTERNAL EXTERNAL	INTENSIFIER PISTON OD LENGTH
94-96 94-98	Ford F-Series (49 States) Ford F-Series (CA) Ford F-Series (All) Navistar T444E Up to Engine S/N 460194	1822800C95 (3) 1816187C3 (4) 1822801C98 (1) 1822801C99 (1) 1821836C3 (2)	F81Z9E527DRM F4TZ9VE527AARM F7TZ9E527ARM	8996000 Standard 6.0mm	8991037 7 holes 2675 +/-125	8991137	MCBS0007 MCBS0008	8991117 16mm 32.2mm
97-99 99	Ford F-Series (49 States) Vehicle Built Before 12/7/98 Ford F-Series (CA) Vehicle built before 12/7/98 Ford F-Series Navistar T444E Engine S/N 460195 to 843989	1824582C94 1822803C1 1824583C97 1825125C1	F81Z9E527BRM F7TZ9E527BRM	8996060 Prime 6.0 mm	8991037 7 holes 2675 +/-125	8991137	MCBS0007 MCBS0008	8991114 16mm 29.7mm
94-96	Navistar T444E (High Output), 210HP (High Torque) & 230HP	1824455C94 1822890C1 1824456C96 1824472C1		8996001 Standard 6.0mm	8991037 7 holes 2675 +/-125	8991137	MCBS0007 MCBS0008	8991115 16mm 29.7mm
99-02 99-03	Ford F-Series and E-Series Vehicle built after 12/7/98 Navistar T444E Engine S/N 843990 & Up	1831551C1 1831550C1 1831487C92 1831487C93 1831489C1	F81Z9E527CRM 5C3Z9E527BRM	8996061 Prime 6.0mm	8991037 7 holes 2675 +/-125	8991137	MCBS0007 MCBS0008	8991111 16mm 29.1mm
99-02 02-03	Ford F-Series S/N 661496 to 896812 Ford E-Series S/N 661974 to 896812 Navistar T444E Engine S/N 1313828 & Up	1833639C1 1833640C1 1833646C92	F81Z9E527EARM XC3Z9E527AARM F61Z9VE527ERM	8996061 Prime 6.0mm	8991037 7 holes 2675 +/-125	8991137	MCBS0007 MCBS0008	8991110 16mm 29.1mm

# HEUI Injectors

# Application Chart

MODEL YEAR	ENGINES	NAVISTAR INJECTOR P/N	P&B GROUP TYPE PLUNGER OD	NOZZLE P/N ORIFICES VOP (PSI)	NOZZLE GROUP	SEAL KITS: INTERNAL EXTERNAL	INTENSIFIER PISTON OD LENGTH
95-97	Navistar DT466E, 230HP (High Torque) & 250HP up to S/N 1084867	1823736C94 1819834C1 1824928C94 1824917C2	8996001 Standard 6.0mm	8991055 5 holes 3700 +/-125	8991155	MCB0007 MCB0008	8991115 16mm 29.7mm
95-97	Navistar DT466E, 175 & 190HP up to S/N 1028710	1824742C91 1824739C1 1824929C94 1824918C2	8996001 Standard 6.0mm	8991045 5 holes 3700 +/-125	8991145	MCB0007 MCB0008	8991115 16mm 29.7mm
95-97	Navistar DT466E, 195, 210 & 230HP up to S/N 1028710	1824743C91 1824740C1 1 824930C94 1824919C2	8996001 Standard 6.0mm	8991035 5 holes 3700 +/-125	8991135	MCB0007 MCB0008	8991115 16mm 29.7mm
95-97	Navistar I530E, 250, 275 & 300HP up to S/N 1084028	1824744C94 1824741C2 1824931C94 1824920C2	8997100 Standard 7.1mm	8991065 5 holes 3700 +/-125	8991165	MCB0530 MCB0008	8991113 17.5mm 29.3mm
97-99	Navistar DT466E, 175 to 210 & 230HP Engine S/N 1028711 to 1194038	1829838C94 1829926C2 1829839C93 1829839C94 1829837C2	8996060 Prime 6.0mm	8991035 5 holes 3700 +/-125	8991135	MCB0007 MCB0008	8991112 16mm 29.1mm
98-99	Navistar I530E, 250 to 320HP Engine S/N 1084029 to 1134350 Perkins 1300 Series Edi, AGCO 9675, Detroit Diesel 8.7L Series 40E	1830145C92 1830147C2 1830146C92 1830146C93 1830148C2	8997160 Prime 7.1mm	8991075 5 holes 3700 +/-125	8991175	MCBS0530 MCBS0008	8991118 17.5mm 26.7mm
97-99	Navistar DT466E, 250HP S/N 1084868 to 1125227	1830155C91 1830157C1 1830156C91 1830573C2	8997160 Prime 7.1mm	8991036 6 holes 3700 +/-125	8991136	MCBS0530 MCBS0008	8991118 17.5mm 26.7mm
99-UP	Navistar DT466E, 250HP S/N 1125228 & Up, Perkins 1300 Series Edi	1830740C92 1830560C2 1830561C92 1830741C92 1830741C93 1830562C2	8997160 Prime 7.1mm	8991046 6 holes 3700 +/-125	8991146	MCBS0530 MCBS0008	8991118 17.5mm 26.7mm
99	Navistar I530E, 250 to 320HP, Engine S/N 1134351 to 1194038 Perkins 1300 Series Edi Detroit Diesel 8.7L Series 40E	1830570C92 1830571C2 1830572C92 1830572C93 1830573C2	8997160 Prime 7.1mm	8991036 6 holes 3700 +/-125	8991136	MCBS0530 MCBS0008	8991118 17.5mm 26.7mm
00-UP	Navistar I530E Engine 1194039 & Up Perkins 1300 Series Edi Detroit Diesel 8.7L Series 40E	1830693C1 1830694C91 1830692C91 1830691C1	8997160 Prime 7.1mm	8991056 6 holes 3700 +/-125	8991156	MCBS0530 MCBS0008	8991118 17.5mm 26.7mm
00-UP	Navistar DT466E Transit, Detroit Diesel 7.6L Series 40E	1836252C91 1836253C1 1836251C91 1836250C1	8997160 Prime 7.1mm	8991066 6 holes 3700 +/-125	8991166	MCBS0530 MCBS0008	8991118 17.5mm 26.7mm