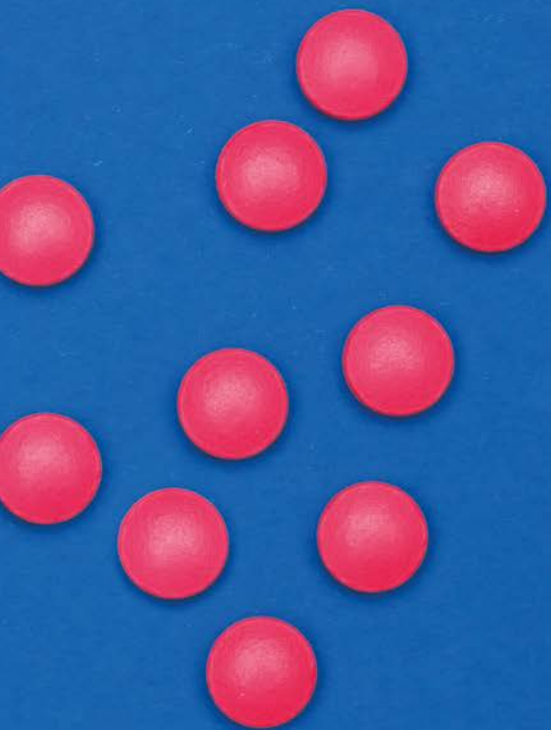


Oralieve®

Your guide to dry mouth



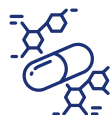
What can cause dry mouth?



Medications - more than 500 medications, both prescription and over the counter, have dry mouth as a side effect



Cancer therapy - dry mouth is one of the most common side effects during and after radiotherapy treatment



Auto-immune diseases including Sjögren's Syndrome



Medication for dementia



Diabetes



Snoring/mouth breathing at night

Importance of saliva

Saliva does more than just keep the mouth lubricated:



It helps protect your teeth from the acids and sugars in the diet, helping to prevent tooth decay



It helps remove bacteria and residual food from the mouth which can cause tooth decay and gum disease



It helps aid swallowing and digesting food, as well as improving taste



It helps keep the tissues of the mouth including your tongue, lips, cheeks and gums healthy



Top tips for dry mouth for your patients



Drink plenty of water/low-acidic fruit juice



Eating cold foods may be more soothing than hot foods



Cleaning the mouth after eating with a soft brush and a mild toothpaste. Choose an alcohol-free fluoride mouthwash with a mild flavour to aid with cleansing



Avoid very dry foods, including chocolate and pastry, which can stick to the top of the mouth



Tell your doctor or pharmacist about dry mouth and ask the dentist for oral health advice

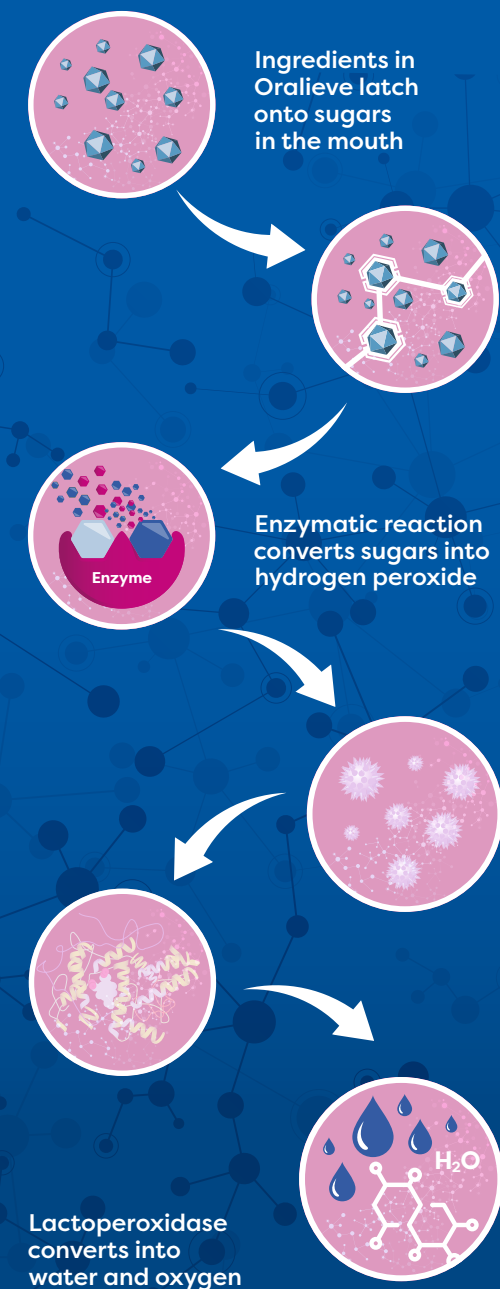
Why Oralieve?

Oralieve products are specially formulated to help supplement and moisturise the mouth whilst promoting fresh breath.

- 1 Formulated with gentle flavours, no alcohol and no SLS
- 2 Specially designed and tested with dry mouth sufferers
- 3 Unique combination of moisturisers and enzymes supplement the same natural systems in saliva – essential for a healthy, comfortable mouth



How the enzymes in Oralieve work



Ingredients in Oralieve latch onto sugars in the mouth

Enzymatic reaction converts sugars into hydrogen peroxide

Lactoperoxidase converts into water and oxygen



Oralieve Ultra Mild Toothpaste

Harsh toothpastes can irritate a dry or sensitive mouth. Oralieve Ultra Mild Toothpaste has an ultra mild flavour, is free from SLS, and contains fluoride to protect teeth.

Oralieve 360° Toothbrush

Gentle cleaning for teeth, tongue and gums.



LUNCH TIME

Oralieve Alcohol-Free Mouthrinse

Mild mint flavour that is gentle on dry, painful mouths which does not sting or burn. Helps improve the natural defence of saliva and maintain fluoride levels.

Oralieve daily moisturising routine

A guide to helping you to maintain a moist and healthy mouth



BEFORE BED

Oralieve Moisturising Mouth Gel

Moisturises and lubricates the mouth, effectively relieving dry mouth symptoms helping to support a peaceful night's sleep.



DURING THE NIGHT

Oralieve Moisturising Mouth Spray

Helps supplement or replace saliva whilst promoting fresh breath and gum health. Works instantly to relieve dry mouth symptoms.

Oralieve Nourishing Lip Care



Developed to help provide natural hydration and intensively moisturises the lips



Oralieve Moisturising Mouth Spray & Oralieve Moisturising Mouth Gel

Works instantly to relieve symptoms of dry mouth.

USE ORALIEVE MOISTURISING MOUTH SPRAY AND GEL ANYTIME YOUR MOUTH NEEDS RELIEF THROUGHOUT THE DAY

How to use

Oralieve Moisturising Mouth Gel

- STEP 1:** Apply a pea-sized amount of **Oralieve Moisturising Mouth Gel** and massage around the inside of the mouth covering the cheeks, gums and the roof of the mouth.
- STEP 2:** If the lips are dry or cracked, apply a small amount of **Oralieve Moisturising Mouth Gel** to the affected areas for instant hydration.

For denture wearers: Apply a small amount of **Oralieve Moisturising Mouth Gel** underneath the dentures to help provide moisture on the palate, retain the denture and prevent any sore spots.

For end of life or patients on continuous oxygen: Regularly inspect the oral cavity and remove any secretions before application of **Oralieve Moisturising Mouth Gel**.



Allergy information:
Contains milk proteins.

How to use

Oralieve Moisturising Mouth Spray

- STEP 1:** For maximum benefit, spray **Oralieve Moisturising Mouth Spray** on the inside of each cheek, gums and tongue as opposed to into the back of the throat. This will help provide instant moisture, promote fresh breath and a healthy mouth.
- STEP 2:** Repeat the application of **Oralieve Moisturising Mouth Spray** as often as required to help the mouth feel fresh and comfortable throughout the day and night.



Allergy information:
Contains milk proteins.

Oralieve Nourishing Lip Care

Developed to help provide natural hydration and intensively moisturises the lips

- No petroleum
- Non-occlusive
- Water soluble
- Effective lip care for patients with cracked and dry lips or Angular Cheilitis
- Suitable for patients on oxygen



Apply as often as required

Oralieve 360° Tooth and Mouth Brush

- Gentle cleaning for teeth, tongue and gums
- 360 degree soft, dense bristles
- Ideal for cleaning the mouth and removing secretions
- Super gentle on the soft tissues of the mouth
- Can be used to hydrate the mouth with water
- Available in adult and children sizes



Not suitable for under 3 years of age or as a teething aid.

Where to purchase

Products can be procured through the NHS Supply Chain using the codes below, DD Products or directly from **Oralieve UK Ltd.**

For direct orders, simply fill out our new customer form and email to accounts@oralieve.co.uk



Oralieve Moisturising Mouth Gel
50ml
ILA749
PIP Code: 3820958
available on prescription from a GP



Oralieve Moisturising Mouth Gel Sample
12ml
ILA747
PIP Code: 3942224
case of 70



Oralieve Moisturising Mouth Spray
50ml
ILA1055
PIP Code: 3820974
available on prescription from a GP



Oralieve Ultra-Mild Toothpaste
75ml
ILA923
PIP Code: 4002473



Oralieve Ultra-Mild Toothpaste
12ml
ILA920
PIP Code: 3942232
case of 70



Oralieve Alcohol-Free Mouthrinse
500ml
ILA1099
PIP Code: 4134557



Oralieve 360° Adult Toothbrush
Toothbrush
IMC010
PIP Code: 4198115



Oralieve 360° Kids Toothbrush
Toothbrush
ILA1100
PIP Code: 4198107



Oralieve Nourishing Lip Balm
10ml
ILA1083
PIP Code: 4215794

Patients can purchase the Oralieve Range direct from www.Oralieve.co.uk or from Amazon

Order samples for your patients



Scan to request patient samples



CPD opportunity from Oralieve

The Oralieve website includes a series of bite-sized, educational modules contributing to a total of 2.5 hours verifiable CPD.



2.5 hours verifiable CPD

We would love to hear from you.

For training opportunities and product training please contact us via email hello@oralieve.co.uk or phone 01582 439122.

Keep up to date with everything Oralieve.

 @Oralieve_UK

 Oralieve

 @Oralieve_UK

 Oralieve-UK

Sign up to our mailing list for news and special offers

www.oralieve.co.uk

