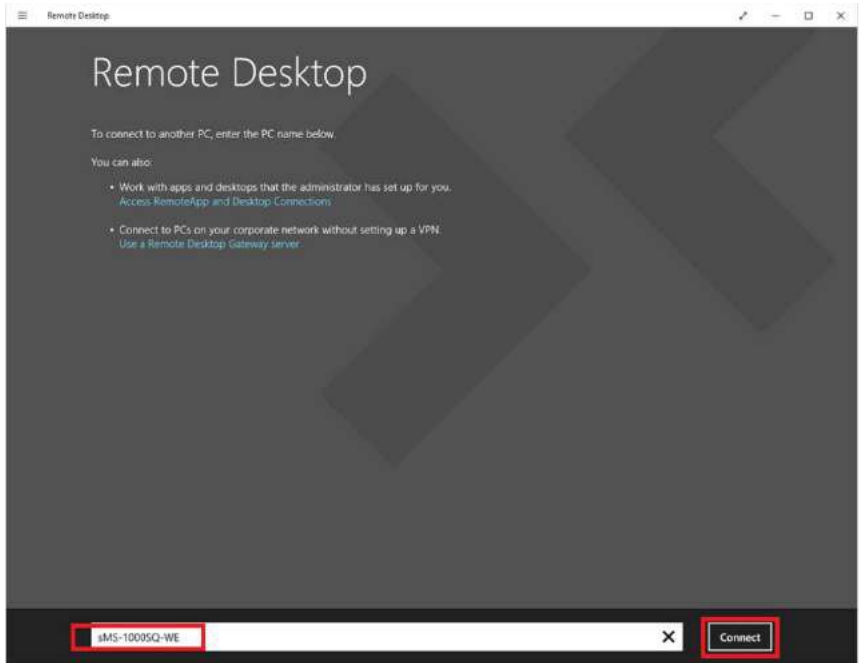


How to connect SMS-1000SQ Windows Edition by RD Client

You can remotely access SMS-1000SQ Windows Edition by the remote desktop client(RD Client) on your PC or smart devices. To use the RD Client, the SMS-1000SQ Windows Edition and your PC or smart devices should be connected in the same network.

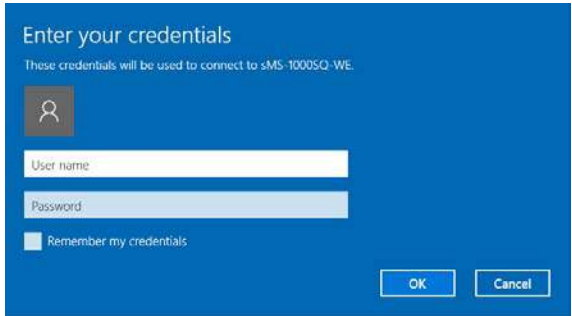
- 1 Install the Remote Desktop Client software
Open the web browser on your PC or smart devices, and connect the link below and download the proper RD Client software accordingly and then install.
<https://technet.microsoft.com/en-us/library/dn473009.aspx>

- 2 Run the Remote Desktop Client software
 - 2.1 After the installation, click the RD Client software to run. And the first page will ask you to enter the host name or IP address of the SMS-1000SQ Windows Edition. Enter either one of them and click 'Connect' button.
The host name is "SMS-1000SQ-WE"(without quotation marks) and you can find the IP address of the SMS-1000SQ Windows Edition by connecting your router setting page.



- 2.2 After connecting SMS-1000SQ Windows Edition by RD client, it will ask you to enter the user name and password. Use the below information and click 'Okay' to access SMS-1000SQ Windows Edition remotely.

User name : **Administrator**
Password : **SOtMaudio2016**

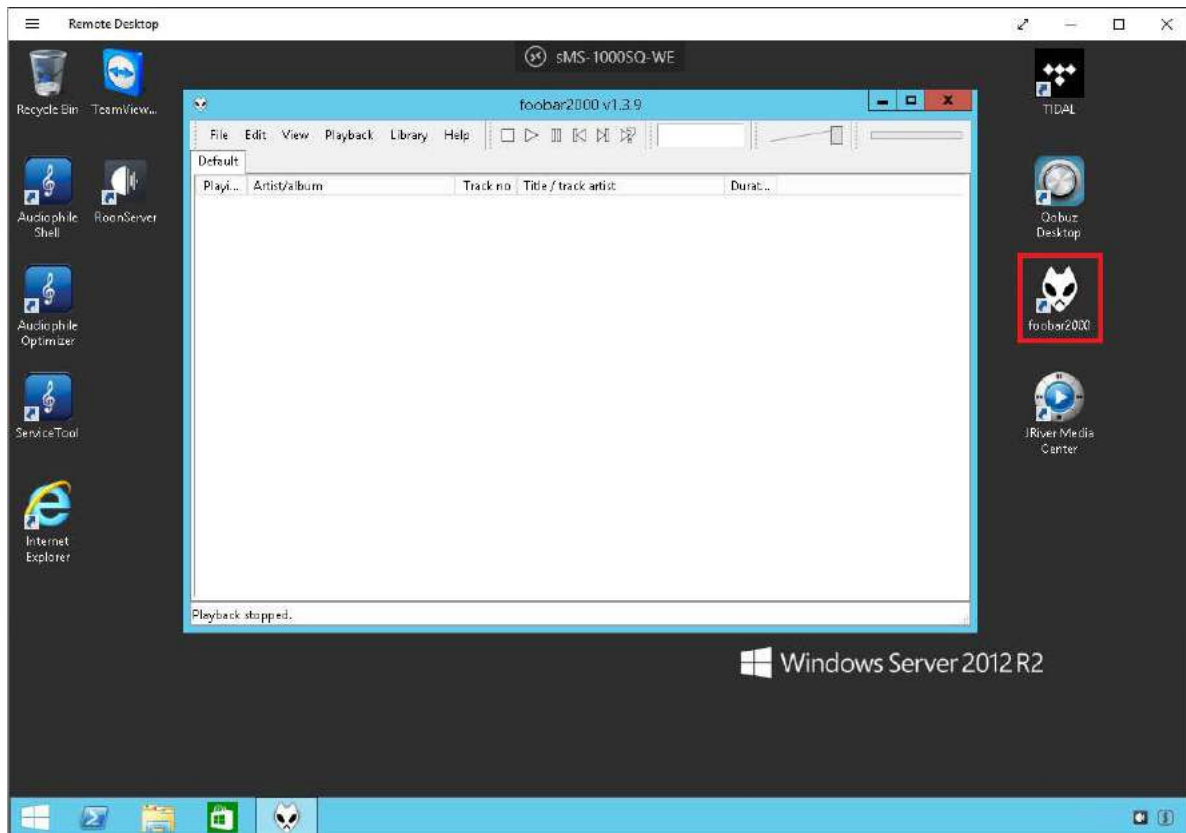


How to use Foobar2000 on SMS-1000SQ Windows Edition

By using the remote desktop client(RD Client) on your PC or smart devices, you can remotely access SMS-1000SQ Windows Edition and find the pre installed Foobar2000 shortcut. (Foobar2000 is free software)

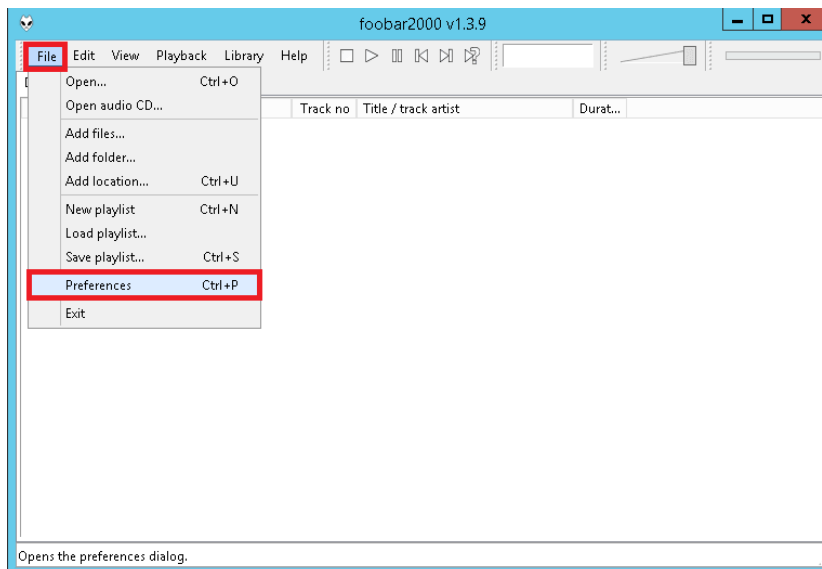
1 Run Foobar2000

Double click Foobar2000 shortcut icon  to run Foobar2000 properly.

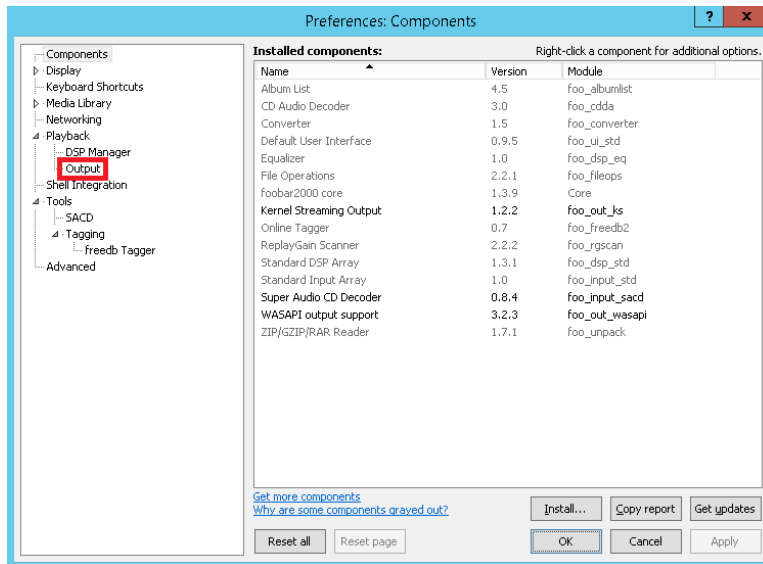


2 Audio device set up

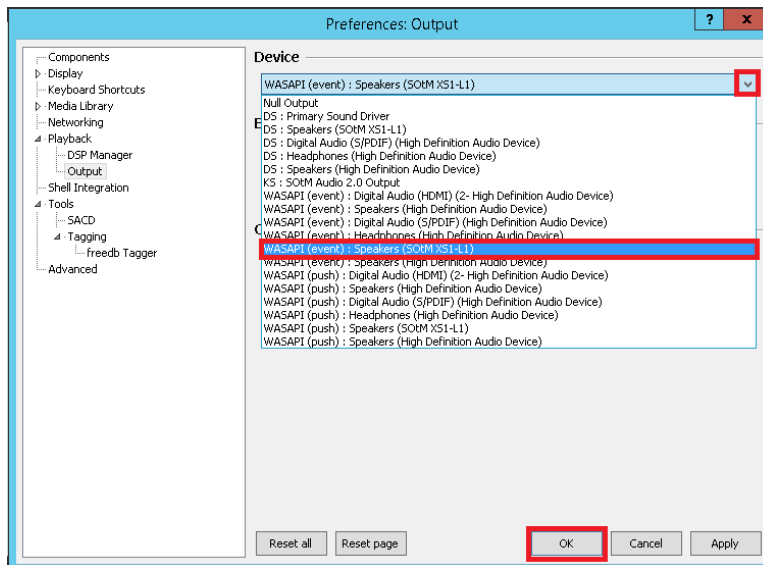
2.1 To set up the audio device, click File -> Preferences(Ctrl + P).



2.2 Select Playback and Output.

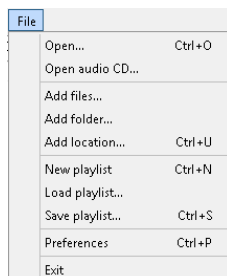


2.3 Select the audio device which you would like to play in Device section.



3 Add music files and play

3.1 Click File to add music files and manage Playlist.



3.2 Stop, play, pause, previous music file playback or next music file playback is available by using the buttons.




* Please refer to details of how to use Foobar2000 on <http://www.foobar2000.org/>.

How to use JRiver Media Center on SMS-1000SQ Windows Edition

By using the remote desktop client(RD Client) on your PC or smart devices, you can remotely access SMS-1000SQ Windows Edition and find the pre installed JRiver Media Center shortcut. To use JRiver Media Center, the JRiver Media Center license key should be required.

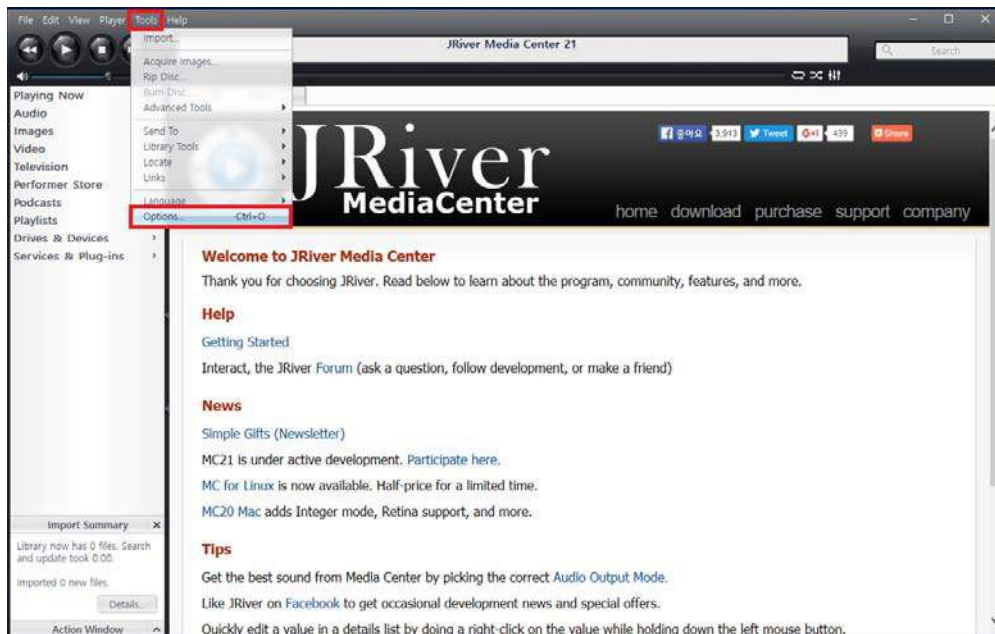
1 Run JRiver Media Center

Double click JRiver Media Center shortcut icon  to run JRiver Media Center properly.

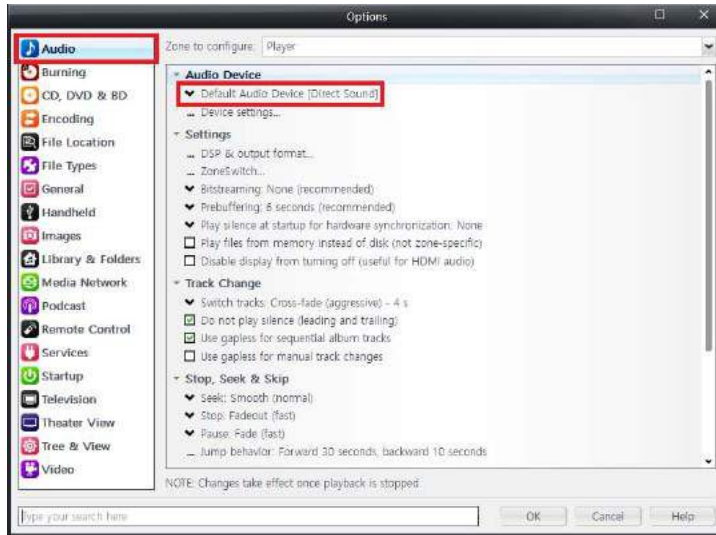


2 Audio device setup

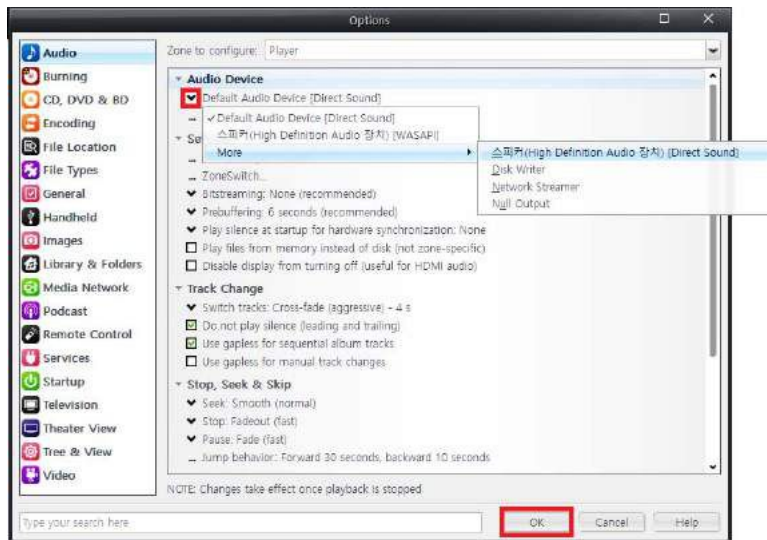
2.1 Click Tools and Options(Ctrl + O) to setup audio device.



2.2 Select Audio and Audio Device.



2.3 Select the audio device which you would like to play in Audio Device section..



3 Add music files and play

3.1 Click File to add music files or manage Playlist.



3.2 Stop, play, pause, previous music file playback or next music file playback is available by using the buttons.



* Please refer to details of how to use JRiver Media Center on <http://www.jriver.com>.