

MONKEY JUMP JUNIOR

WHAT'S IN THE BOX

Lay out all box components included on a 6 ft. x 6 ft. level and comfortable workspace:

- (1) Top Plate
- (1) Bottom Plate
- (6) Angled Top Poles
- (6) Angle Leg Poles
- (3) Base Poles
- (1) Inner Tube
- (2) Hexagon Wrenches*
- (1) Hexagon Key Tool*
- (6) Large Bolts
- (6) Lock Nuts*
- (6) Lock Washers*
- (12) Regular Washers*
- (6) Set Screws*
- (6) Base Bolts*



*50% of Actual Size

MM00184-Monkey Jump Junior

ASSEMBLY INSTRUCTIONS



WARNING

- Due to the presence of small parts during assembly, keep out of reach of children until assembly is complete.
- To prevent serious injury, children must not use Monkey Jump Junior until properly installed. Do not use if any damage or deterioration is detected or parts are missing. Contact point of purchase retailer or M&M Sales Enterprises, Inc.
- Never substitute parts.
- Please keep instructions for future reference.

BEFORE YOU BEGIN ASSEMBLY

- Assembly should be completed by adult person(s). We intend for our products to bring joy not frustration and because the Monkey Jump Junior is meant to enjoy with friends too – in that same spirit we say invite a friend (or someone you can spend at least 30 minutes with) to help you assemble your Monkey Jump Junior.
- Place the equipment on level ground, not less than 6 ft. from any structure or obstruction such as a fence, garage, house, overhanging branches, laundry lines, or electrical wires.
- No need to show gorilla strength while tightening bolts. Overtightening bolts or nuts can cause the threads to get damaged making it difficult to take your Monkey Jump Junior apart or reassemble it in the future.

HERE WE GO!

Lay out all box components included on a 6 ft. x 6 ft. level and comfortable workspace:

Assemble Pole Sections

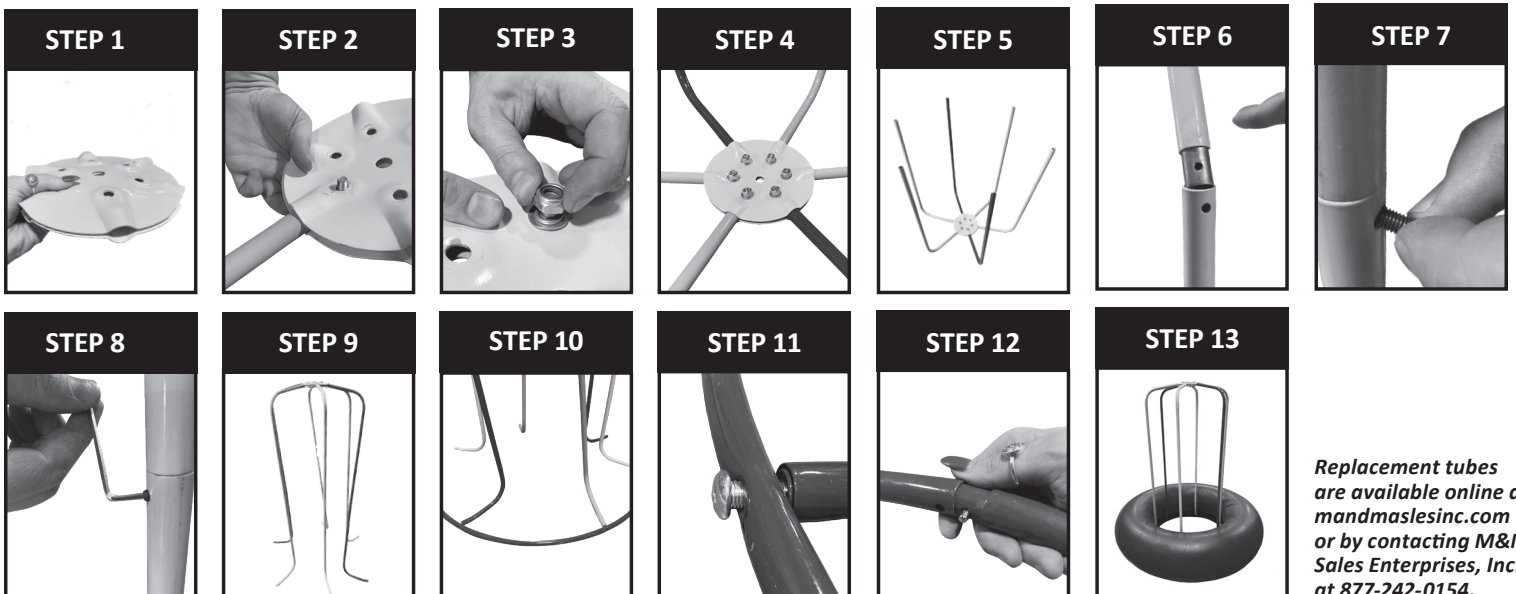
1. The pole section will be put together upside down for simplicity and then mounted onto the base. Place the Bottom Plate against the Top Plate bottom side down so that the holes in the two plates align.
2. Insert the shorter length side of the Angled Top Pole into a pole pocket in the middle of the plate sandwich. Place a Regular Washer on the Large Bolt and insert from the underside of assembly, through the Top Plate, Angled Top Pole and Bottom Plate.
3. Add an additional Regular Washer, Lock Washer and Locknut, in this order, to the Large Bolt end. Hand tighten only.
4. Choose the same color Angled Top Pole and enter it opposite of its twin in the plate sandwich. Repeat steps 2-4 five more times. Once complete, fully tighten all Large Bolts with the Hexagon Key Tool included.
5. When complete, it should look like image below.
6. Once all poles are installed into their pole pockets (matching colors installed opposite of each other in the plates) insert the corresponding color Angled Leg Pole into Top Pole until holes align.
7. Once aligned, insert Set Screw.
8. Tighten with the Hexagon Wrench provided until the Set Screw is flush with the exterior surface of the base tube.
9. Repeat steps 7-8 five times. When complete, flip the Monkey Jump Junior right-side up to resemble the image below.

Connecting Base to Poles

10. Take one Base Pole and align the two pre-drilled holes with two Angled Leg Poles.
11. Insert both Base Bolts where the holes align and tighten by hand.
12. Take another Base Pole and press the button in, insert, and release to lock. Repeat steps 10-12 two more times. Once all six Base Bolts are hand-tightened and flush with the exterior surface of the Base Poles they can be tightened all the way with the Hex Wrench provided.

Adding the Bounce: There are two options for Inner Tube inflation: 1.) Have tube professionally inflated for no charge by a tire store; this option is recommended to reach optimal inflation. OR 2.) A home compressor will work but be sure to maximize inflation. *NOTE: If blown up too big, the tube can pop. However, if not enough air is pumped, the tube can seem flat and jumping will not be ideal. Feet should not hit the ground or base tubing if inflated to correct level.*

13. After your Inner Tube has been inflated, slide the tube, with the nozzle facing down or to the ground surface/floor, over the top of the assembled Monkey Jump Junior. You can blow it up about half-way until it forms some shape then slide over pole assembly and complete the inflation or inflate fully and applying downward pressure move the tube down the pole assembly to the base. When inflated, the tube should measure approximately 16-18" high and five feet wide. Inflate the Inner Tube with enough air that the jumpers will not hit the ground surface below the Inner Tube while jumping. Standard Inner Tube inflation is ~6 psi (40kpa). The final assembled Monkey Jump Junior should resemble the image below. **NOTE: CONTINUED ON BACK SIDE**



Replacement tubes are available online at mandmaslesinc.com or by contacting M&M Sales Enterprises, Inc. at 877-242-0154.

OPERATION INSTRUCTIONS

Observing the following statements and warnings reduces the likelihood of serious or fatal injury:

1. Only for family residential domestic use.
2. Designed for 1-6 children.
3. Maximum fall height 4.5 ft. (determined by product's tallest height)
4. Jump safely with on-site adult supervision for children of ages 3+
5. Instruct children: Do not walk close to, in front of, behind, or between moving users of equipment • Do not use equipment in a manner other than intended • Not to dismount equipment while they are in motion
• Not to wear inappropriate items, such as but not limited to, loose fitting clothing, hood and neck drawstrings, scarves, cord-connected items, capes, and ponchos. These items can cause death by strangulation • Do not use equipment when wet • Not to attach items to the equipment that are not specifically designed for use with the equipment, such as, but not limited to, jump ropes, clothesline, pet leashes, cables and chain as they may cause a strangulation hazard • To remove bike or other sports helmet before playing on the equipment • Wear well-fitting and full foot enclosing footwear. Exam+p in an area safe of obstructions on ground, air, or sky that maybe encountered during jumping.
6. Locate Monkey Jump Junior on level, flat ground surface that has grass, padding, or carpet under and surrounding it.
7. Carefully step onto the inflated Inner Tube while securely grasping the vertical poles with both hands. Begin to jump. Hold bars with both hands at all times during bouncing or while standing on tube if others are bouncing. The security of holding onto the supportive vertical poles is one of the reasons that this equipment so much safer than a traditional spring trampoline.
8. Jump upright. Do not jump and invert or flip.
9. In direct sunlight, inner tube and poles may become hot to the touch. Check that surfaces are not too hot for comfort and safe use. Keeping your Monkey Jump Junior out of direct sunlight and extreme heat of summer months will maintain the life of the equipment. If using outdoors, placing the Monkey Jump in a shaded area is preferred. Moving the Monkey Jump Junior indoor to outdoor or from room to room doesn't require full disassembly. The Monkey Jump tube should be slid up and over the pole unit. Unscrew the base from the vertical pole assembly.
10. The Monkey Jump Junior can now be moved easily through a standard door frame in three sections: tube, base, vertical pole assembly. Reassemble completely prior to beginning use in new location.

WARNING: This product contains one or more polycyclic aromatic hydrocarbon chemicals (PAHs) know to the State of California to cause cancer and birth defects or other reproductive harm. To learn more visit oehha.ca.gov/proposition-65.

MAINTENANCE INSTRUCTIONS

INNER TUBE MAINTENANCE: In order to ensure a great bounce, ensure the Inner Tube is inflated to the recommended PSI. It will require adding additional air from time to time. Please be aware, the lifespan of the inner tube will be determined by several factors. Direct sunlight, over inflation of the tube, sharp objects, and other misuses will increase the chances of a blown Inner Tube. The pole assembly is powder coated and will hold its color for years to come.

BEFORE EACH USE: Inner Tube should be visually inspected for proper inflation and any signs of visible damage that might cause it to pop during use. Avoid using any objects that might cause damage to the Inner Tube during play.

AT THE BEGINNING OF EACH PLAY SEASON: Tighten all hardware • Check all protective coverings on bolts, pipes, edges, and corners • Replace if they are loose, cracked, or missing • Check all moving parts including poles, hardware, and tube for wear, rust, or other deterioration. Replace as needed • Check all metal parts for rust. If found, sand and repaint using a non-lead based paint meeting the requirements of 16 CFR 1303

TWICE A MONTH DURING PLAY SEASON: Tighten all hardware • Check all protective coverings on bolts, pipes, edges, and corners. Replace if they are loose, cracked, or missing

ONCE A MONTH DURING PLAY SEASON: Check all moving parts including poles, hardware, and tube for wear, rust, or other deterioration. Replace as needed.

AT THE END OF EACH PLAY SEASON OR WHEN THE TEMPERATURE DROPS BELOW 32°F: Take product inside for indoor use.

DISPOSAL: Owners shall be responsible for maintaining the legibility of the warning labels. When you are ready to dispose of the product, make sure that all components are disposed of in accordance with local waste ordinances. Disassemble and dispose of the playground equipment in such a way that no unreasonable hazards will exist at the time the playground equipment is discarded.

Replacement parts can be ordered by contacting M&M Sales Enterprises, Inc. 1-877-242-0154.

WARNING: Failure to carry out these checks and inspections could result in fall, head injury, or death due to falls from equipment placed over hard surfaces or misuse of product.

SAFETY INFORMATION

To reduce the likelihood of injury please follow the guidelines as outlined in these instructions. You can visit our website mandmsalesinc.com to review the instruction manual in the future or keep this instruction sheet for reference: Monkey Jump Junior MM00184.

The installation instructions above are reflective of the U.S. Consumer Product Safety Commission's Outdoor Playground Safety Handbook. For a complete description of installation instructions and warnings for outdoor playground equipment you can visit our website at mandmsalesinc.com to link to the current CPSC handbook and review in its entirety.

Our products are tested to ensure safety and compliance with Consumer Product Safety Improvement Act of 2008 (CPSIA) including specifications for lead paint and phthalates and ASTM International F1148 Standard Consumer Safety Performance Specifications.



M&M SALES ENTERPRISES, INC.

1300 Synergy Ct., Dubuque, IA 52002 | 877-242-0154 | www.mandmsalesinc.com

INSPIRING *outdoor* ADVENTURES