



EJ
EAGLE ONE

Victoria Arduino



FUTURE BEGINS

Welcome to the new era
of espresso machine



Victoria Arduino

THE FUTURE OF SPECIALTY COFFEE

«I think the future of specialty coffee will see it continue to grow and spread around the world. Become more and more a normal part of people's everyday lives. That is not just a special treat, its just what coffee is for them now, especially younger generations.»

James Hoffmann
Coffee Opinion Leader and Author





Eagle One is born in response to the **new generation of coffee shops** where **DESIGN**, **PERFORMANCE**, and **SUSTAINABILITY** are determining factors to create a pleasant and memorable experience.

EJ
EAGLE ONE



TARGET



COFFEE
CHAINS



SPECIALTY
COFFEE SHOPS



MICROROASTERS

EAGLE ONE

A NEW COFFEE MACHINE CONCEPT

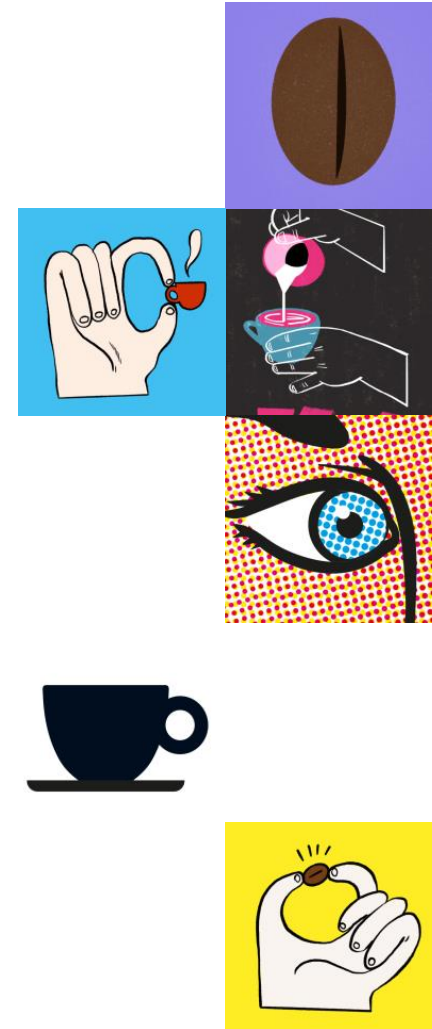


London was the city that inspired the Eagle One development. It is the city of James Hoffmann, consultant in the Eagle One project. In London many cafés have **small spaces** and they are **very careful with energy consumption**.

«Baristas need compact equipment, that is ergonomic and easy to use, but also capable of producing high volumes of very high quality drinks. That shouldn't come at the expense of energy efficiency though»

James Hoffmann
Coffee Opinion Leader and Author

EJ
EAGLE ONE



Victoria Arduino

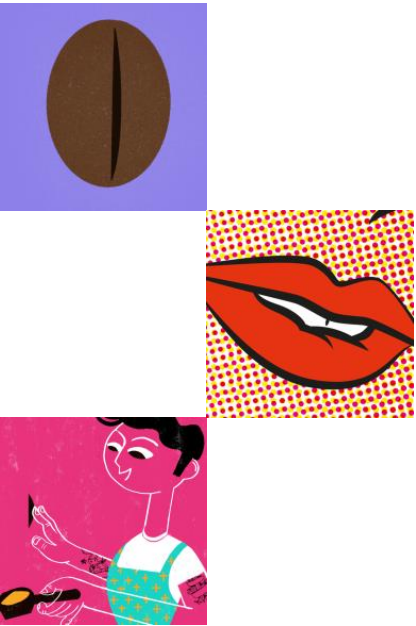
MY PHILOSOPHY? SUSTAINABLE.

A MORE ACCESSIBLE AND ECOLOGICAL MACHINE

Be part of the mood of the coffee shop, balancing

- **FUNCTIONALITY** - simplicity for comfort
- **AESTHETICS** - simplicity for pleasure
- **ETHICS** - simplicity for principles





«What we are trying to do is to create technologies that help you simply, ergonomically and repeatably make a great coffee, deliver the temperature, deliver the water that you exactly need, as you need it, in a way that is fun, easy and quick to use. That's the real goal».

James Hoffmann
Coffee Opinion Leader and Author

EJ
EAGLE ONE





HIGH TECHNOLOGY AND DETAIL-ORIENTED



MINIMAL ENVIRONMENTAL IMPACT

new constructive design with less internal systems can maintain its high-performance level while reducing the environmental repercussions.



NEW MATERIALS

The boilers are made of steel and insulated with a unique material that guarantees extreme thermal insulation, avoiding heat dispersion.

ENERGY OPTIMIZATION

the new engine with NEO (New Engine Optimization) guarantees high performance while reducing the energy consumption of the machine.

T.E.R.S.

The patent pending system TERS (Thermal Energy Recovery System), uses the discharged water to pre-heat the incoming water through a recycling method, thus minimizing wastes.

EJ
EAGLE ONE

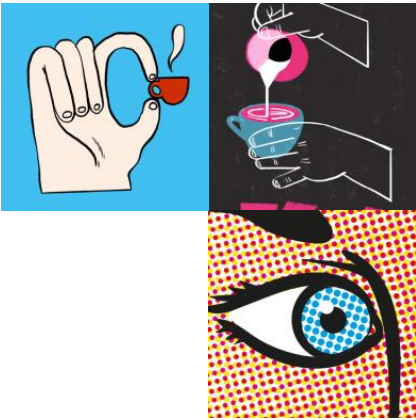
Victoria Arduino





Only the energy needed,
instantly and when
requested.

Victoria Arduino



New heating system for optimal extraction

The goal of NEO technology focuses on **how we heat water for brewing espresso**. We know that we must have a consistent temperature for espresso to have the consistency of taste.

NEO is much more focused on heating water right before we need to use it. It's heated up to just about brew temperature, just before it enters the brew group, and at that point, the brew group only maintains the temperature. Here it's about heating the water just before it enters the brewing group, and then it makes the espresso.

Doing this, we can heat the water to pretty much brew temperature and have the mass of the brew group just kind of finish off, refine that temperature to be precisely where we need it, right before it hits the coffee.

LESS IS MORE

New technology, fewer emissions, less environmental impact

The NEO engine uses an instant heating system allowing only the necessary amount of water for the extraction to be heated, thus using **LESS AMOUNT OF WATER AND BOILERS OPTIMIZATION.**

Productivity and performance remain constant, while **energy efficiency increases.**



Barista can set 1 temperature for each group. The machine does the rest.

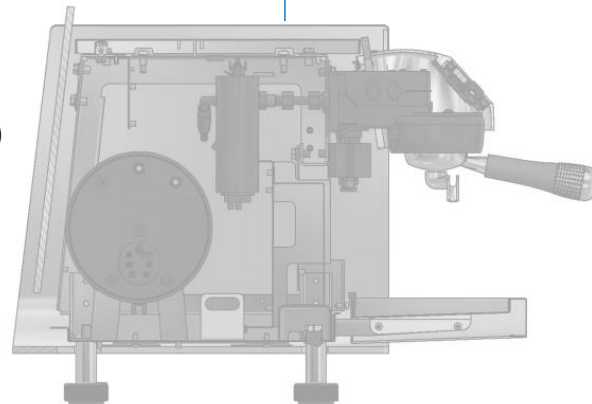


Steam Module

Capacity: 7lt
Power: 3000W (2gr) – 3600W(3gr)
Range: 0,8-3 bar (2,1 bar suggested)
Material: Stainless steel
Regulation: Digital pressure gauge

Brewing Module

Power: 900W
Range: 80-105°C

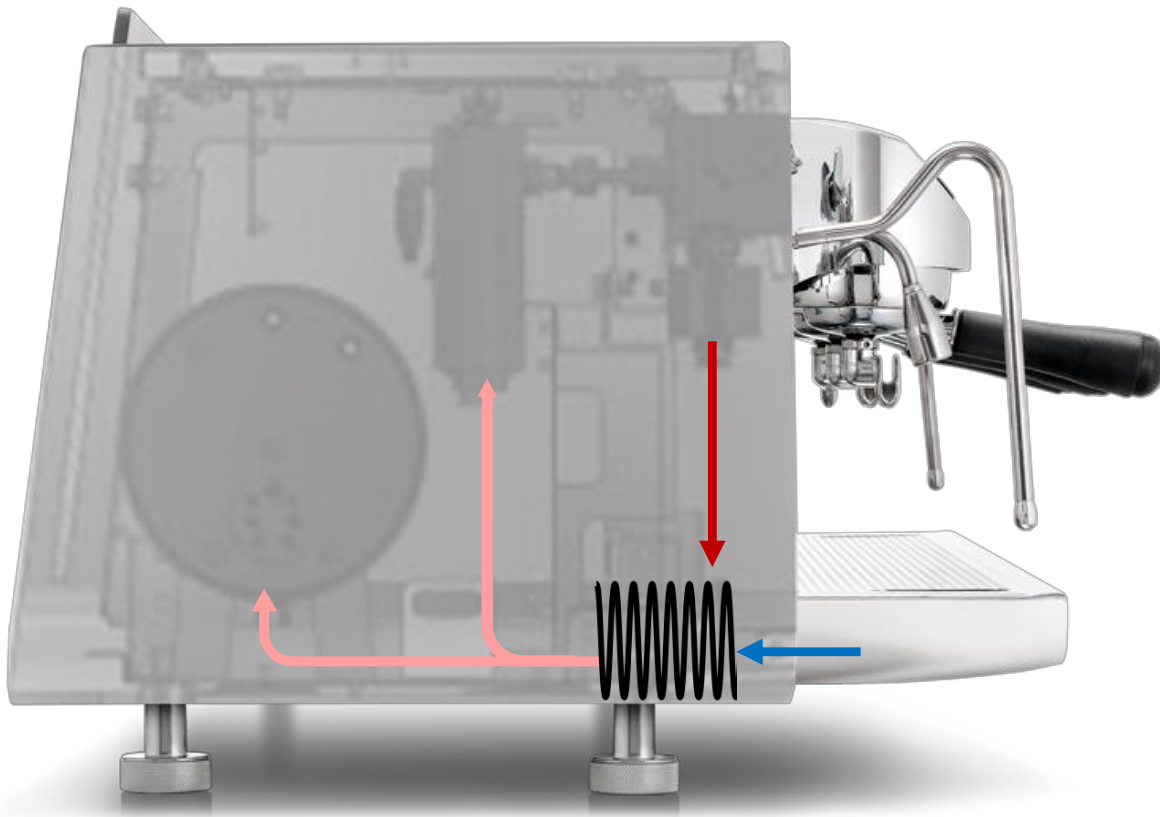


POWER

5000W (2gr)
6500W (3gr)

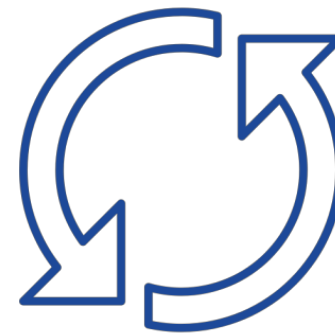
LESS IS MORE

New technology, fewer emissions, less environmental impact



T.E.R.S.

The new patent pending technology T.E.R.S. (The Temperature Energy Recovery System) uses the discharged water to pre-heat the incoming water. The result is an **8% saving on total machine consumption.**



Victoria Arduino

LESS IS MORE

New technology, fewer emissions, less environmental impact

The machine is more compact. The NEO technology, the thermal insulation and the size reduction of the single components, helped to save energy and to limit the environmental impact substantially.

The **Life Cycle Assessment** demonstrated how the Eagle One had a 23% less environmental impact concerning the same category machine.

-35%*

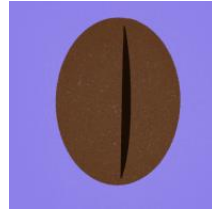
ENERGY SAVING

*compared to the same category machine

-23%*

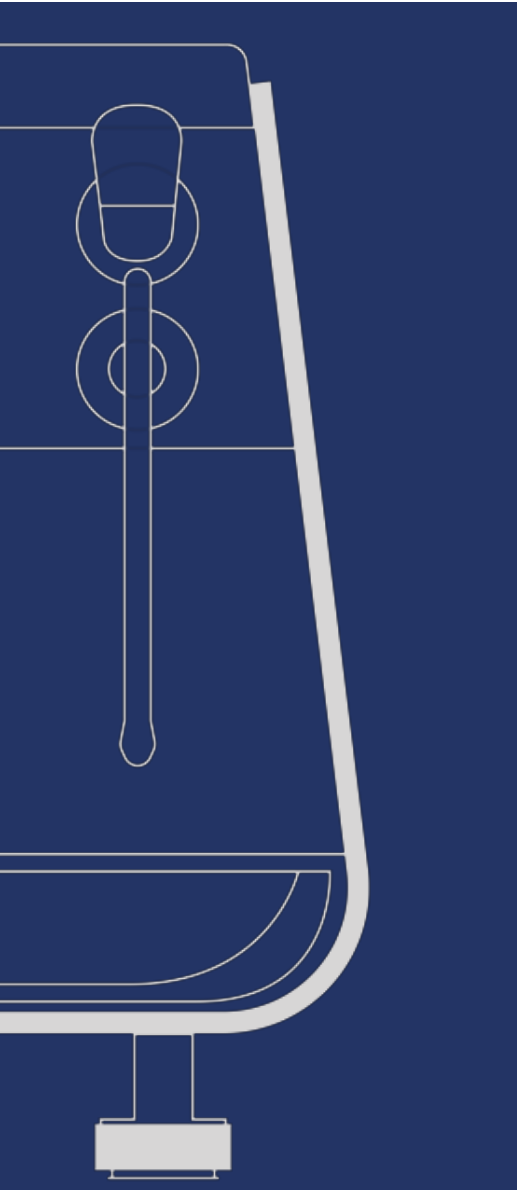
CO₂ EMISSIONS

*compared to the same category machine



Life Cycle Assessment is a structured and standardized method used worldwide that quantifies the potential impacts on the environment and human health associated with the use of a product, starting with respecting resources and emissions.





STEAM

Simple and quick way to froth milk



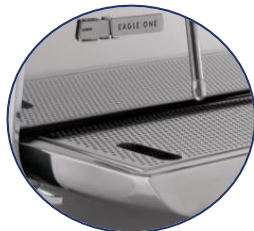
Steam electronic control

Ergonomic steam lever



Cool touch steam wand

New steam wand design



Steam wand designated position

Less maintenance

More precision

Prevent burns

Even more easy to use

Easy cleaning

Victoria Arduino

STEAM

How it works

EASYCREAM

UP TO 4 DIFFERENT SETTINGS

EASYCREAM SETTING 1

Final temperature
Delay
Air temperature

EASYCREAM SETTING 2

Final temperature
Delay
Air temperature

MANUAL STEAM

OPENING

Activation and deactivation of the solenoid valve through pressure. Maximum time 2 minutes

HOT WATER

Two settings for two different amount of hot water

PURGE

Activation and deactivation of the through pressure.



EASYCREAM



PROBLEM

LOW SKILLED BARISTA
DELIVERY LOT OF CAPPUCCINO

SOLUTION

AUTO-STEAMER WITH AIR-STEAM COMPRESSOR
ADJUSTABLE TEMPERATURE PROBE
VORTEX GENERATOR NOZZLE

BENEFITS

CONSISTENT HIGH-QUALITY FROTH
FLEXIBLE TO PREPARE DIFFERENT FROTH
FASTER SERVING

2 bar STEAM PRODUCTION



PROBLEM

STEAM QUALITY IMPROVING (1.2 bar)

SOLUTION

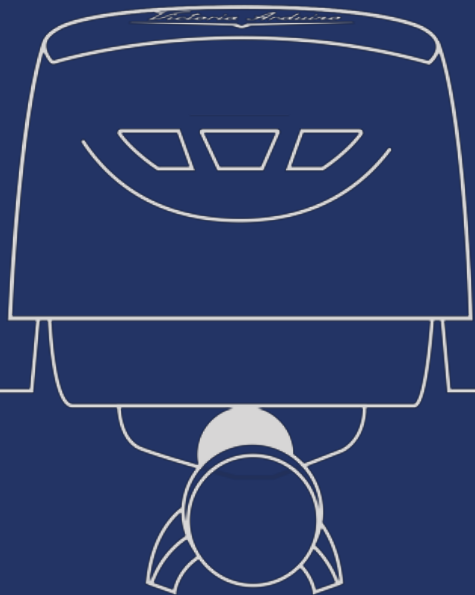
WORKING PRESSURE INCREASE

BENEFITS

HEATING HIGH-VOLUME MILK IN LESS TIME
DRY STEAM FOR A BETTER QUALITY FROTH

GROUP

Better quality and even more easy to use and to maintain



Ghost display

3 different programmable buttons



Stainless steel shower reinforced

Stainless steel diffuser

Autopurge

SmartWater technology
optional



Standard group height
(105mm)

Spot led optional

**Better interaction with
barista workflow**

Easy maintenance

Better quality

Ergonomic solutions

Victoria Arduino



SMART WATER TECHNOLOGY

PROBLEM

WATER IS RESPONSIBLE FOR 50-70% OF RELIABILITY ISSUES

SOLUTION

INLET WATER CONTROL

BENEFITS

MACHINE PROTECTION

REDUCING MAINTENANCE

GUARANTEERING A CONSTANT QUALITY OF COFFEE



AUTOPURGE

PROBLEM

MANUAL PURGING SLOW DOWN THE BARISTA WORKFLOW

SOLUTION

AUTOMATIC PURGING

BENEFITS

ALLOWS THE BARISTA TO BE FOCUS ON A BETTER CUSTOMER EXPERIENCE
ALLOWS TO SAVE WATER

MATERIALS

Made in aluminium and stainless steel

STAINLESS STEEL

- Front panel
- Lower back panel
- Extractable drip tray
- Full gel cupwarmer

ALUMINIUM

- Profile
- Back panel
- Front side group head
- Steam wand lever
- Eagle



OPTIONALS

- Full gel cupwarmer
- Easycream
- Rear and front spot led
- Smart Water Technology
- Raised feet



CUPWARMER

Dimensions

366x667mm (2gr)
336x897mm (3gr)

Power

400W (2gr)
500W (3gr)

Victoria Arduino

DISPLAY

Better user-experience

With the *Display Touch (2.8"*), it's possible to modify the settings even with the mobile APP. Available functions: recipes, buttons and display, power and temperature management, dose programs, machine cleaning and maintenance.

DISPLAY | HOME



Group cover

Menu

Temperatures

Brewing time

Easycream

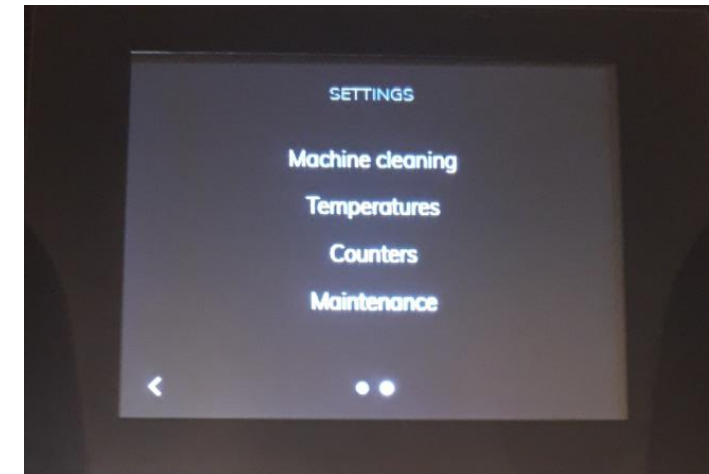
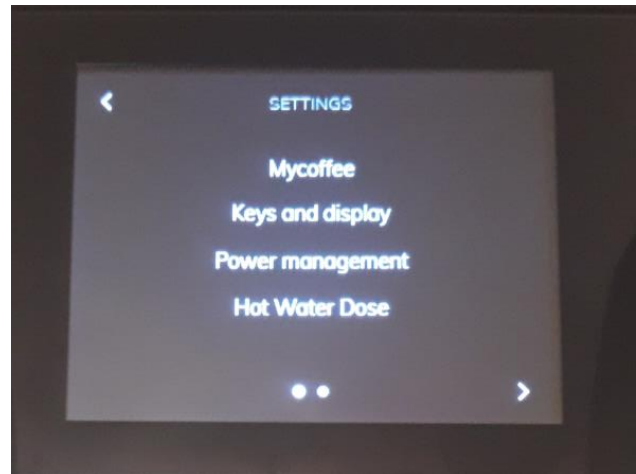
Pressure

Connection

A simplification of the group keyboard and the adding of a display to check machine information. It allows significant control of the extraction.

DISPLAY | MENU

- MYCOFFEE
- KEYS AND DISPLAY
- POWER MANAGEMENT
- HOTWATER DOSE
- MACHINE CLEANING
- TEMPERATURES
- COUNTERS
- TECHNICAL SETTINGS

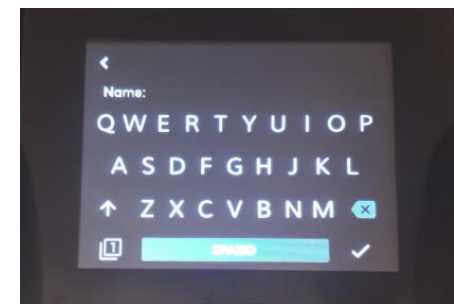
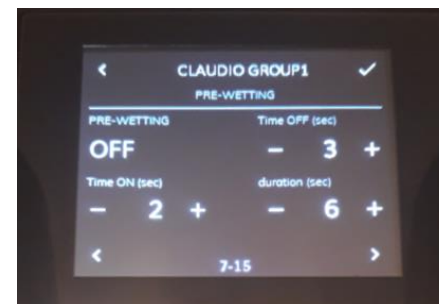
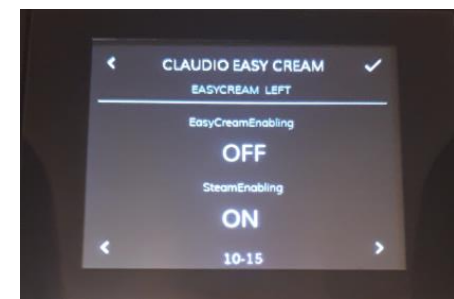
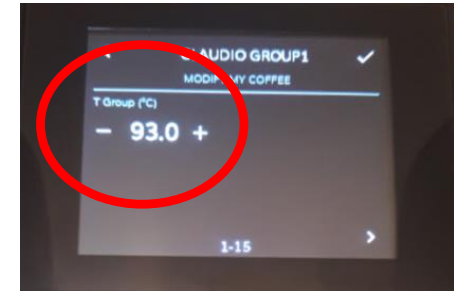
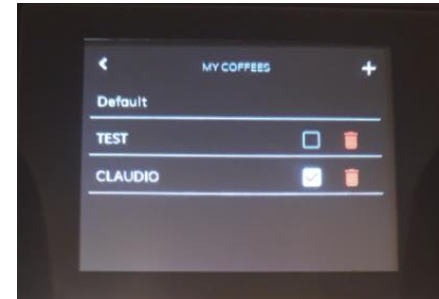


DISPLAY | MENU

- MYCOFFEE
- KEYS AND DISPLAY
- POWER MANAGEMENT
- HOTWATER DOSE
- MACHINE CLEANING
- TEMPERATURES
- COUNTERS
- TECHNICAL SETTINGS

CONFIGURATION

1. ONE TEMPERATURE
2. DOSE PROGRAMMING
3. PREWETTING
4. STEAM - EASYCREAM
5. NAME
6. SAVING & RECIPES ACTIVATION

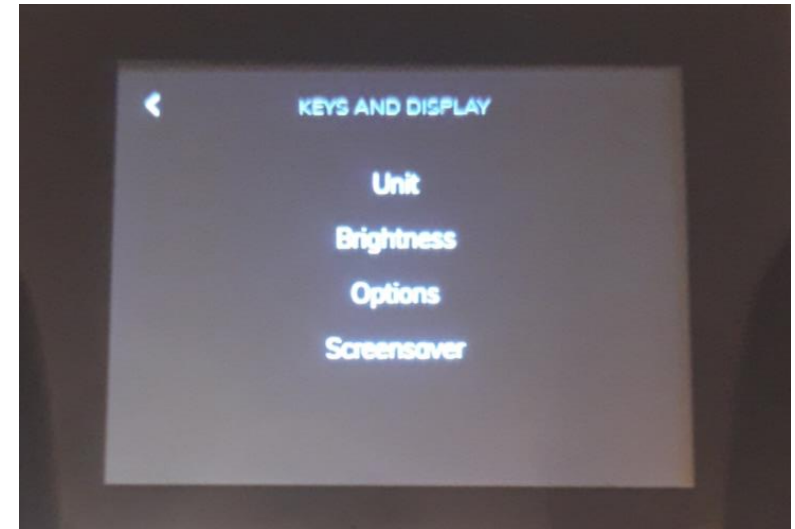


DISPLAY | MENU

- MYCOFFEE
- **KEYS AND DISPLAY**
- POWER MANAGEMENT
- HOTWATER DOSE
- MACHINE CLEANING
- TEMPERATURES
- COUNTERS
- TECHNICAL SETTINGS

POSSIBILITY TO MANAGE TEMPERATURE AND BREWING TIME INDIPENDENTLY:

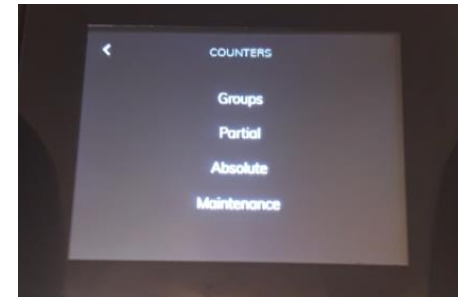
1. TEMPERATURE DISPLAY 2,8''
2. BREWING TIME ON MACHINE DISPLAY
3. BREWING TIME ON GROUP DISPLAY



DISPLAY | MENU

- MYCOFFEE
- KEYS AND DISPLAY
- POWER MANAGMENT
- HOTWATER DOSE
- MACHINE CLEANING
- TEMPERATURES
- **COUNTERS**
- TECHNICAL SETTINGS

- TOTAL BEVERAGES
- TOTAL BEVERAGES FOR EACH GROUP
- COUNTERS SINGLE BEVERAGE
- COUNTERS STEAM
- COUNTERS HOT WATER
- COUNTERS TOTAL LITERS



A screenshot of a touch screen displaying 'GROUP 1 COUNTERS'. The screen shows a table with beverage types and their counts. At the top left is a back arrow, and at the top right is the title 'GROUP 1 COUNTERS' and a total count of '36'. Below the title is a table with four rows. At the bottom, there are three dots and a right arrow.

GROUP 1 COUNTERS		36
Doses 1 Short		08
Doses Continuous		14
Doses 1 Long		13
Doses2 Short		01
Doses2 Long		00

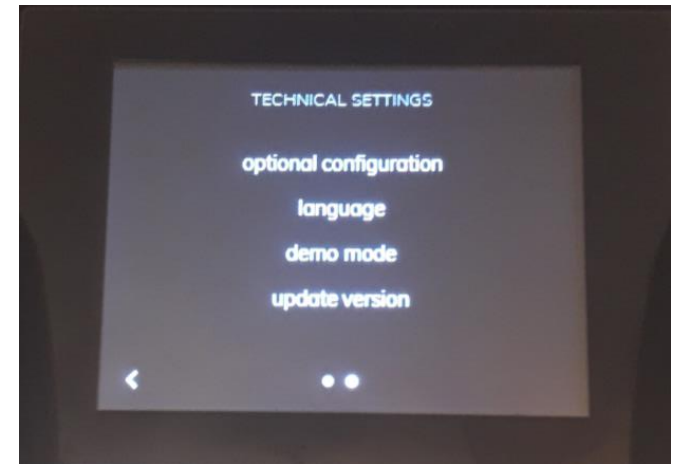
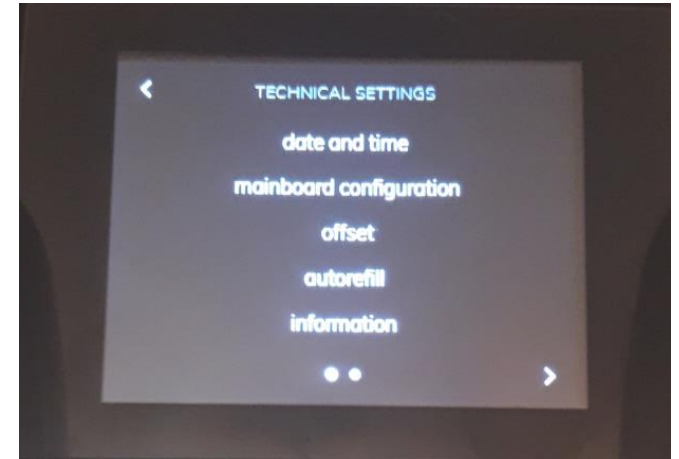
A screenshot of a touch screen displaying 'PARTIAL COUNTERS'. The screen shows a table with machine statistics. At the top left is a back arrow, and at the top right is the title 'PARTIAL COUNTERS' and a trash icon. Below the title is a table with four rows. At the bottom, there is '1-7' and a right arrow.

PARTIAL COUNTERS	
Total Coffee Machine	78
Total Liters of Water	69
Total of Steam	76
Total EasyCream	00

DISPLAY | MENU

- MYCOFFEE
- KEYS AND DISPLAY
- POWER MANAGMENT
- HOTWATER DOSE
- MACHINE CLEANING
- TEMPERATURES
- COUNTERS
- **TECHNICAL SETTINGS**

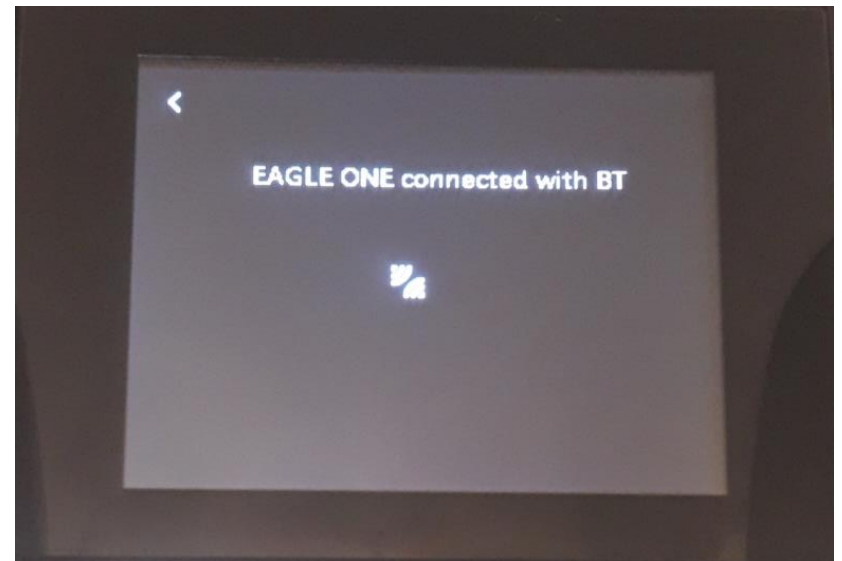
- EACH COMPONENT FUNCTIONAL TEST
- MACHINE CONFIGURATION
- AUTOLEVEL
- PROBE SENSIBILITY
- MAINTENANCE
- ALARMS
- OPTIONAL

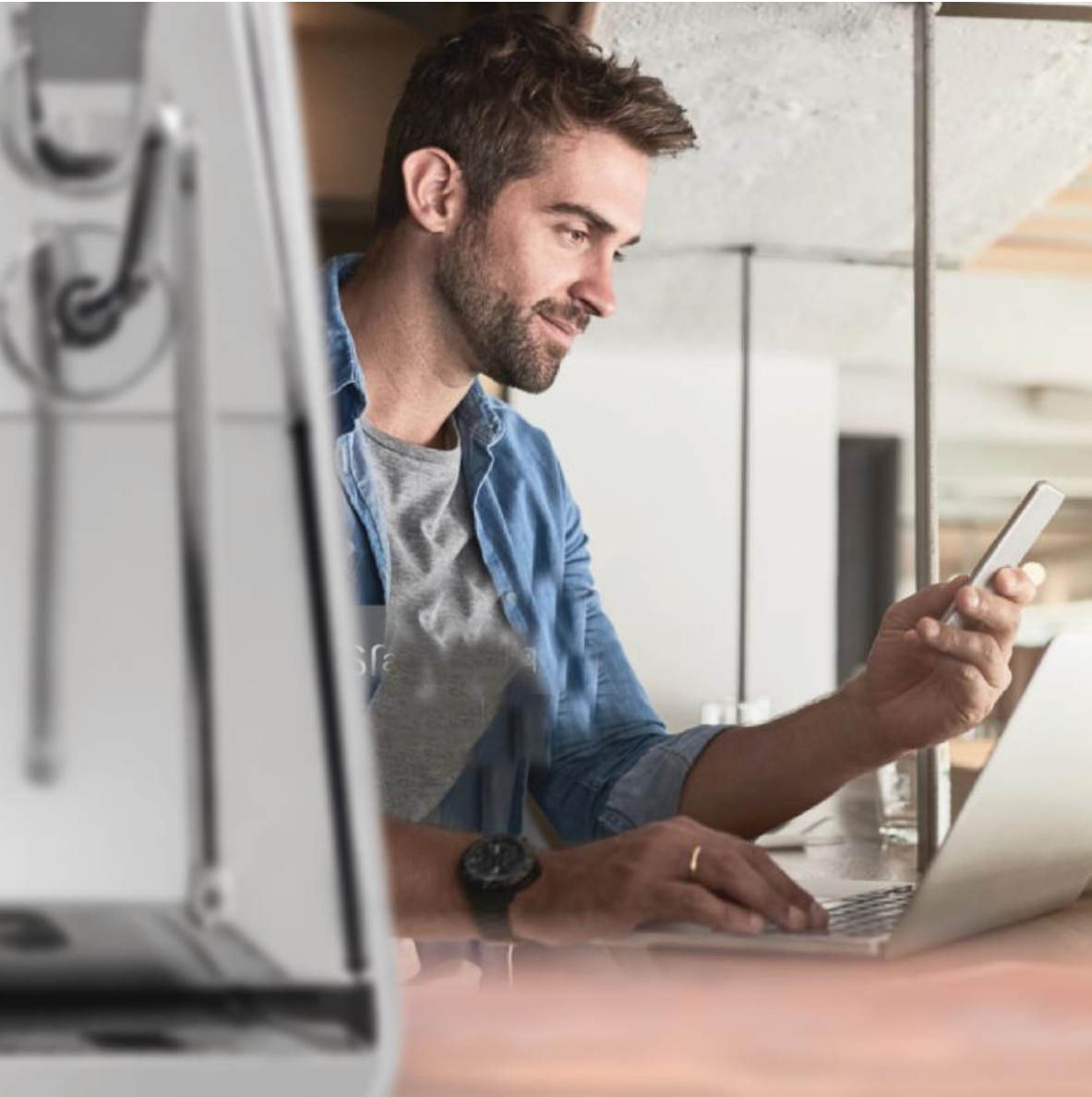


DISPLAY | CONNECTION

- MYCOFFEE
- KEYS AND DISPLAY
- POWER MANAGMENT
- HOTWATER DOSE
- MACHINE CLEANING
- TEMPERATURES
- COUNTERS
- TECHNICAL SETTINGS

- MY RECIPE
- MACHINE SETTING
- BREWING DIAGRAM
- BREWING QUALITY
- RECIPE AND BREWING DIAGRAM SHARING
- ALARMS





Sharing is the greatest
innovation

Victoria Arduino

MY VICTORIA ARDUINO

New app to share recipes and tell stories

An app for smartphone and tablet thought for new generation coffee shops and baristas that enjoy sharing experiences and information.

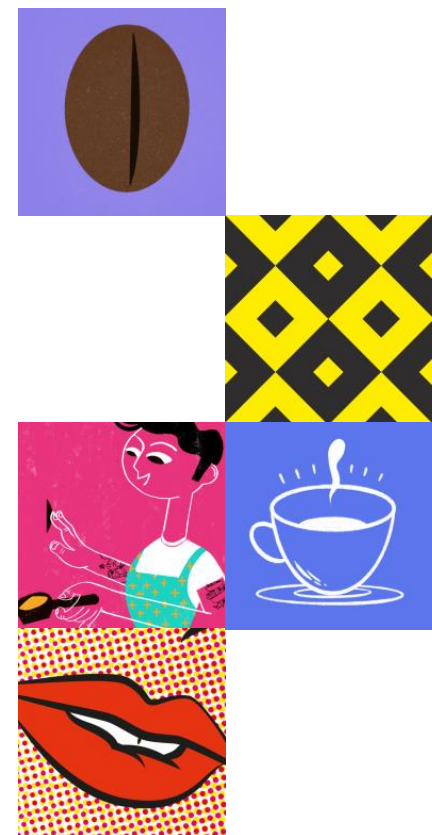
It connects with Bluetooth and allows the user to create and share information and recipes about milk and coffee with all the other “Eagle-ners.”

For coffee shops, the app “My Victoria Arduino” allows to connect more than one machine to keep track and modify their settings without interrupting the baristas workflow.



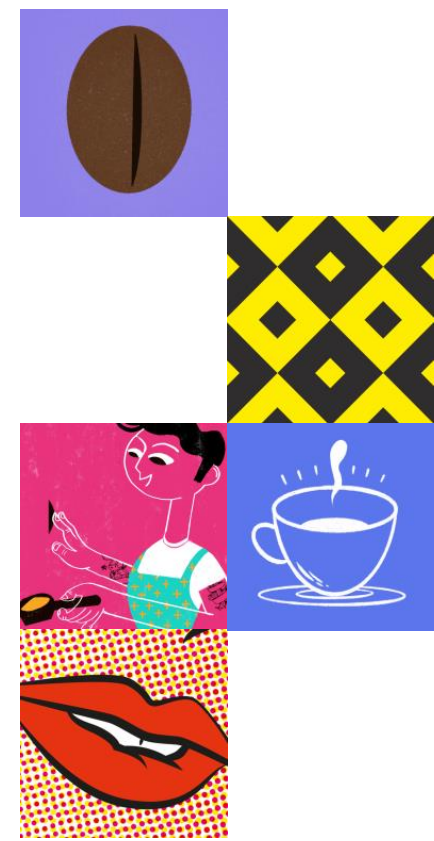
MY VICTORIA ARDUINO

New app to share recipes and tell stories



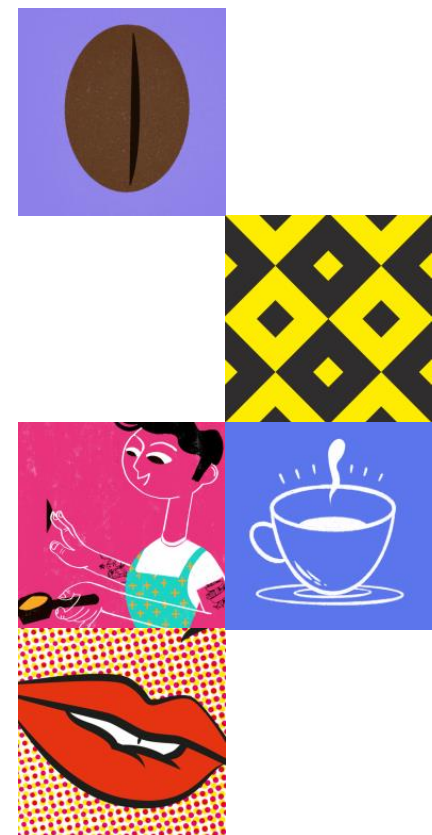
MY VICTORIA ARDUINO

New app to share recipes and tell stories



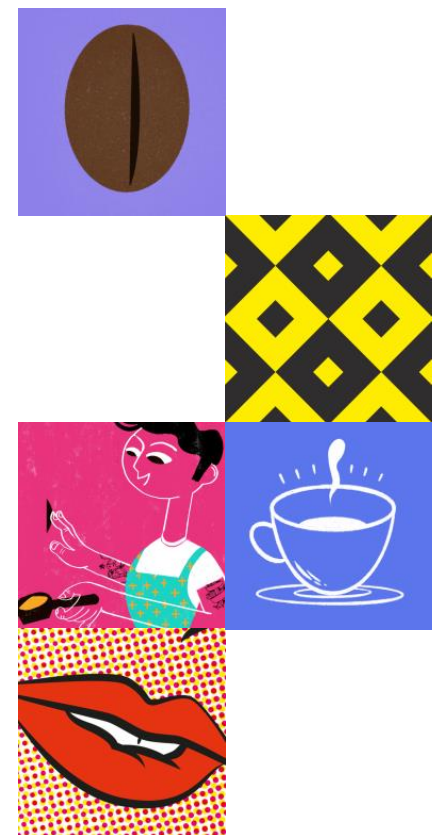
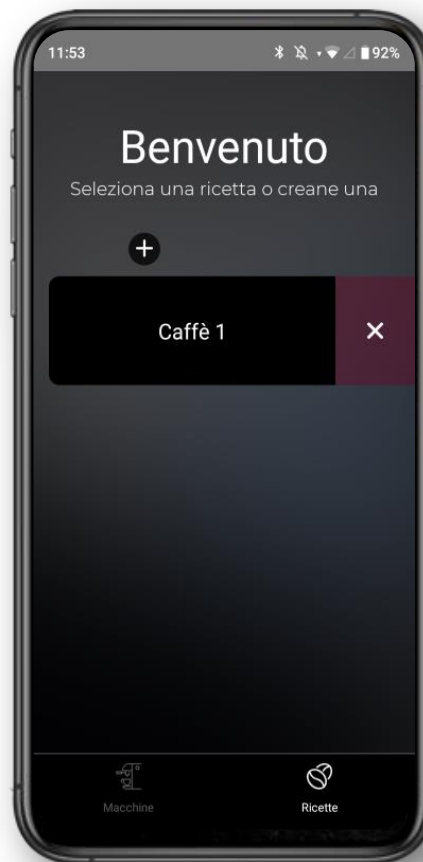
MY VICTORIA ARDUINO

New app to share recipes and tell stories



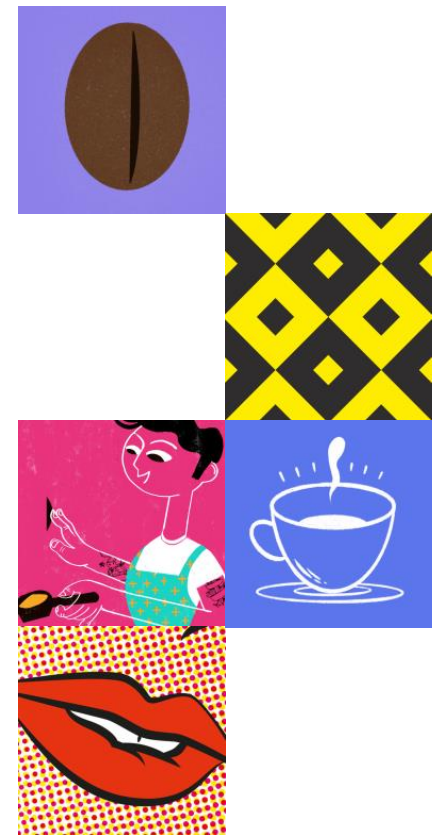
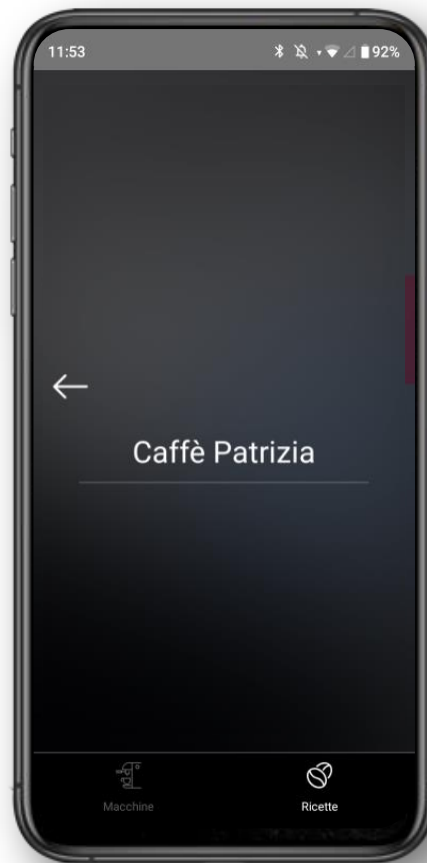
MY VICTORIA ARDUINO

New app to share recipes and tell stories



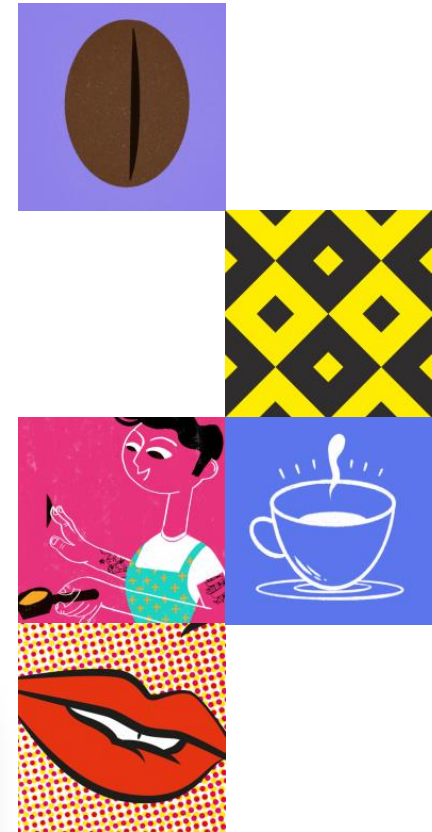
MY VICTORIA ARDUINO

New app to share recipes and tell stories



MY VICTORIA ARDUINO

New app to share recipes and tell stories

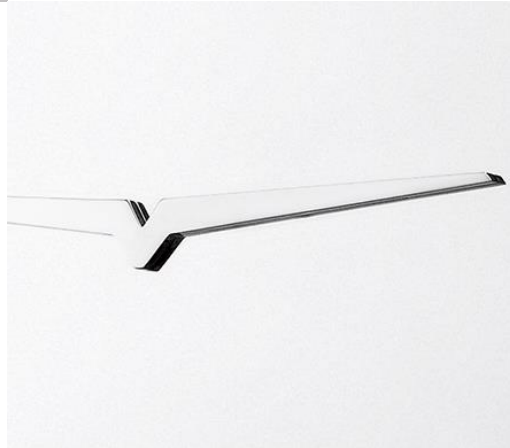
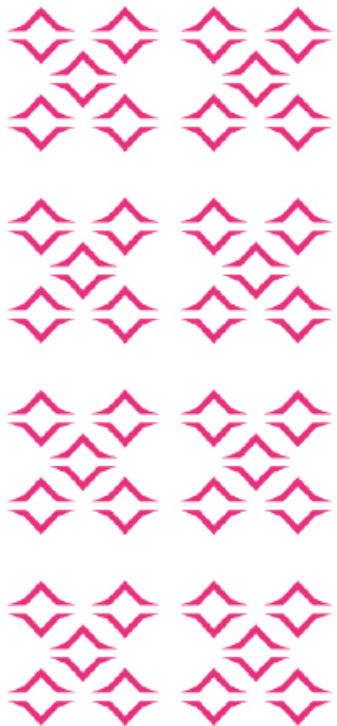


EJ
EAGLE ONE

Victoria Arduino



DESIGN AND SIMPLICITY



Minimal, simple, and sophisticated design adaptable to different styles and layouts.

For the shape of the Eagle One, Victoria Arduino was not only inspired by its impressive history, but also concentrating on the needs of the new era coffee shops that require compact, efficient, and sustainable machines while expressing personality.

“Big innovation in a compact space: this is Eagle One”

Lauro Fioretti,
Victoria Arduino Product Manager



576mm

EAGLE ONE

437mm



988mm (3gr)

758mm (2 gr)

Victoria Arduino

I AM ONE

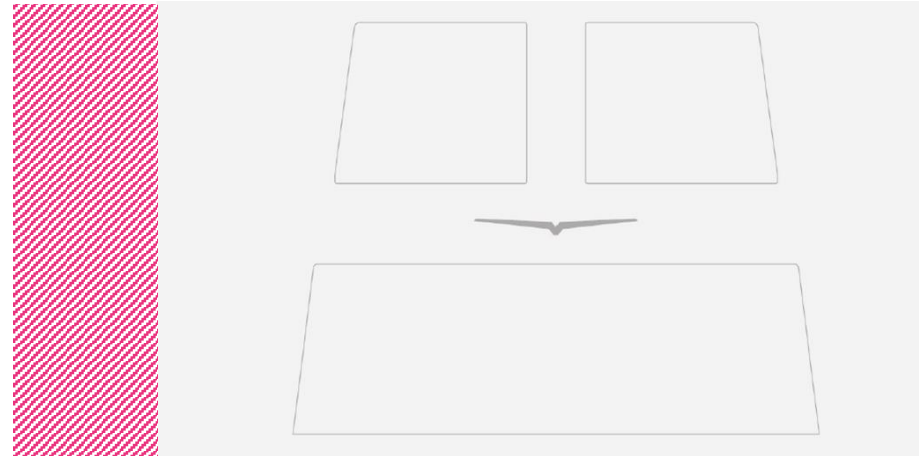
Color and materials to make a UNIQUE EAGLE ONE



I can be how you want

Minimal, simple, and sophisticated design adaptable to different styles and layouts.

For the shape of the Eagle One, Victoria Arduino was not only inspired by its impressive history, but also concentrating on the needs of the new era coffee shops that require compact, efficient, and sustainable machines while expressing personality.



PROFILE



BACK PANEL





An author's touch, a mark of excellence

Famous architect **Giulio Cappellini** signed a **special version of the Eagle One** coffee machine.

For the new look, the international ambassador of excellence and Italian design used **wooden recycled materials, dipped in an ecological resin, and then completely polished.** The exclusive '**Cappellini blue**' tints the side panels of the machine.



Victoria Arduino