

INSTRUCTION MANUAL

AUTOMATIC ELECTRONIC
COFFEE TAMPER



COMPAK[®]
COFFEE GRINDING COMPANY

INDEX



AUTOMATIC ELECTRONIC COFFEE TAMPER

CUBE TAMP

SAFETY	4
DESCRIPTION	6
INSTRUCTIONS	7
IDENTIFICATION	8
TECHNICAL CHARACTERITICS	9
EXTERNAL COMPONENTS	11
INSTALLATION	12
OPERATION	14
TROUBLESHOOTING	18
DECLARATION OF CONFORMITY	19

1. SAFETY

READ THE SAFETY AND USE INSTRUCTIONS CAREFULLY BEFORE FIRST USING THE APPLIANCE



This device must be used exclusively for the functions for which it was designed: **tamping ground coffee**



Do not use the device to press any other types of food such as nuts, or granulated foods such as sugar and others.



This device **may be used by children aged 8 years and over, by people with reduced physical, sensory or mental capacities and by people without prior experience/knowledge, provided they have received supervision** or instructions on the safe use of the device and understand the associated risks.



Children should not be allowed to play with the device



Cleaning and maintenance of the device should not be carried out by children without supervision.



Avoid allowing liquids to come into contact with internal or external surfaces while the appliance is switched on or off, except for those parts expressly mentioned in the "CLEANING" section. If, for any reason, this happens, unplug it immediately from the mains and dry all surfaces carefully.

1. SAFETY

**USERS SHOULD PAY
SPECIAL ATTENTION TO
AND SCRUPULOUSLY OBEY
THE FOLLOWING SAFETY
INSTRUCTIONS**



If it is necessary to access the interior, where the electrical components are located, **go to the nearest technical service centre.**



If any component should break, or if any intervention is needed, **we recommend contacting the technical service centres**, which will carry out the repair or replacement, guaranteeing that safety standards are adhered to.



Only an authorised supplier may replace the mains cable of any machine.



Any other use will be considered improper and dangerous



When maintaining the coffee tamper, special care should be taken as it could cut the **maintainer**. The use of suitable gloves when handling it is recommended.



Do not insert any part of the body between the coffee tamper and the holder.



NOTE: The manufacturer will not be liable for damages caused either by the improper use of the device or by not following the stated safety measures

2. DESCRIPTION

The coffee tamper you have purchased has been designed using the most innovative technological systems.

The result is a high quality product that ensures the best results.

Our products are manufactured entirely by hand, one at a time, following the most demanding quality requirements.

In its manufacturing process, quality materials (aluminium, steel, etc.) are used, which are suitable for contact with food.



3. INSTRUCTIONS

3.1. This manual provides the information necessary for the correct installation, **handling and maintenance of the equipment and highlights the precautions that should be taken by the operator.**



Example: (1) - 1 Display

Icons:

Information	Attention

To ensure you get the best out of the machine, it is essential to carefully follow the instructions given in this manual.

If there is any kind of problem, contact the nearest technical service. This manual should be kept until the machine is replaced and must always be available to the operator.

3.2. This manual uses some special terms, such as:

- **Text in bold** to highlight the importance of some terms.
- **Numbers in parentheses after a word, which match the numbering of the items** in the image to the side or in the image of the external components.

4. IDENTIFICATION



The technical characteristics plate is indelibly marked with the following information:



CE

MODEL SERIAL NUMBER

ELECTRICAL DATA DATE OF MANUFACTURE ORDER

OPTIONS OBSER.

COMPAK Coffee Grinders S.A. Pol. Ind. Can Barri,
Molí Barri, parcela B, 08415 Bigues i Riells Barcelona, Spain



NOTE: The manufacturer reserves the right to change components/configurations of any model, according to the different geographic market demands.

5. TECHNICAL CHARACTERISTICS

5.1. SCOPE

The coffee tamper that you have purchased is intended for shops and communities ground coffee needs to be tamped and it should only be used for this purpose.



Any other use is considered improper and dangerous.



NOTE: The manufacturer will not be held responsible for any damages resulting from improper use of the equipment, or for not following the safety measures as outlined below.

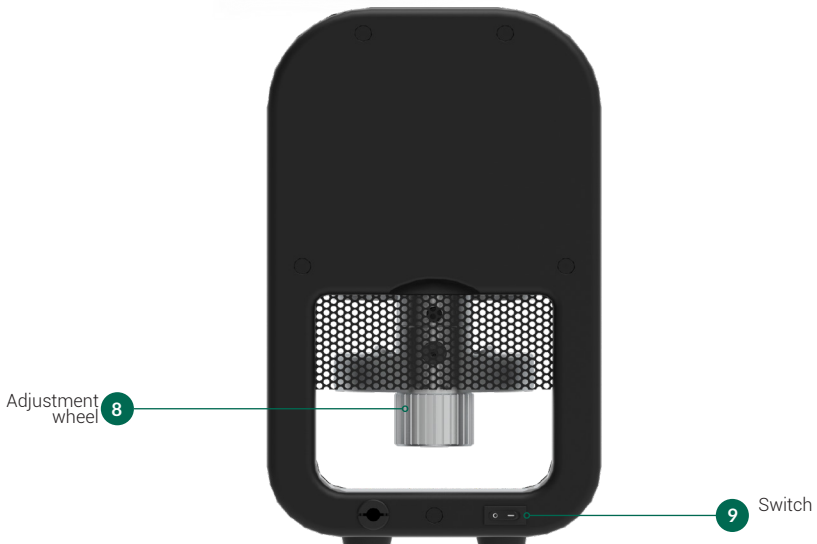
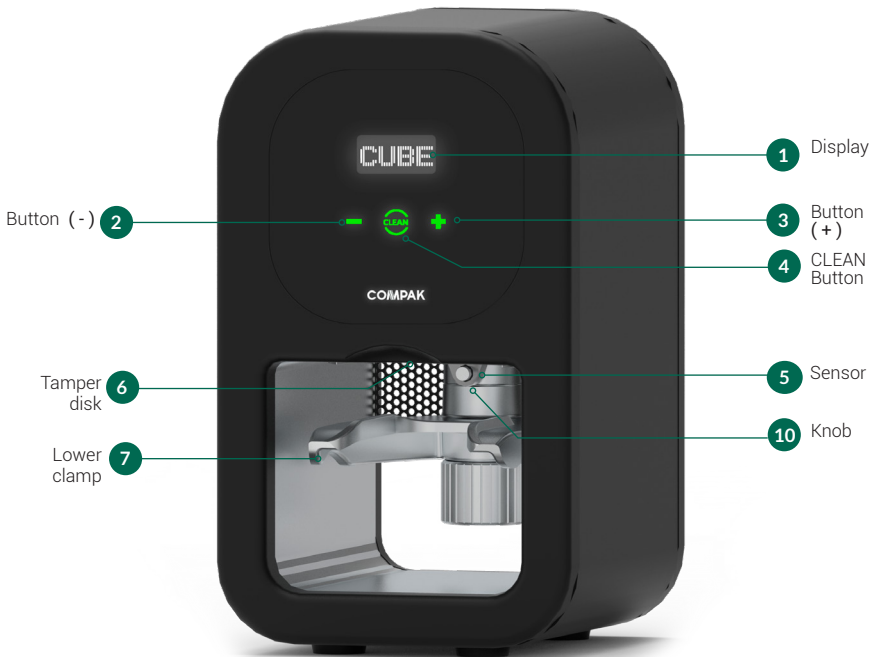
5. TECHNICAL CHARACTERISTICS

5.2. TECHNICAL DATA

	110/220/240 V 50/60 Hz	
Voltage/Frequency	65	(W)


Weight	Height Width Depth	Tamp diameter
6,3	279,7 165 185	53 58 58,3
Kg	mm	mm


6. EXTERNAL COMPONENTS




7. INSTALLATION

7.1. LEGAL WARNINGS

 The installer must read this instruction manual carefully before installing the machine

 **The installation of the device must be carried out by qualified and authorised personnel, in compliance with the current safety and hygiene standards.**

7.2. IMPORTANT WARNINGS

 The operator must be a responsible adult. Never a child nor someone without the ability to accept that responsibility

When handling the machine, the following precautions should be obeyed:

- Feet must not be bare.
- Hands and feet must be dry.
- Do not get the machine wet.
- Do not expose the machine to direct sunlight or other atmospheric agents.
- Never insert any part of the body between the tamp area and the support
- When unplugging the grinder, always pull on the plug and never the power cable to avoid a possible short circuit.

7. INSTALLATION

7.3. WHERE TO USE IT

i The appliance must be installed on a solid, flat surface.



The minimum size of the workplace, to ensure the best performance of the device, must be at least the following:

Height	280 11.02	mm in
Width	166 6.53	mm in
Depth	186 7.32	mm in

7.4. INSTALLATION

Before connecting the machine, check the following:

- **The characteristics on the data plate match those of the electrical mains network.**
- **The electrical connection plug matches the socket into which it is to be plugged.**
- **Ensure that the electrical power of the facility is adequate for the power consumed by the appliance.**
- **The point of connection to the electrical mains network must be protected with the appropriate electrical protection device.**
- **The equipment must be correctly connected to a ground connection according to the current safety regulations.**

8. OPERATION

8.1. POWER SWITCH

The power switch (9) has 2 positions:



- : Equipment on
- : Equipment off

8.2. FITTING THE PORTAFILTER

It is essential that the portafilter is perfectly adjusted to achieve a consistent and level tamping.

Make sure that the diameter of your portafilter matches that of your Cube Tamp's coffee tamp.

To adjust the support height:

Make sure the power switch (9) is in the OFF position. **Fig.1**

Turn the wheel (8) clockwise to lower the support. **Fig 2**

Counter-clockwise to raise it. **Fig 3**

i **NOTE: The manufacturer reserves the right to vary the components of the machine, according to the requirements of each market, as well as technological advances.**



Fig. 1

8. OPERATION

8.2.1 SENSOR DISTANCE ADJUSTMENT

The current system allows, through a knob adjustment, (10) to change the sensor distance to work properly with all types of portafilters. **Fig 4**

In order to move the sensor away, rotate clockwise, and counterclockwise to bring it closer.

This adjustment should only be made in the event that the factory setting is not adequate for your portafilter.

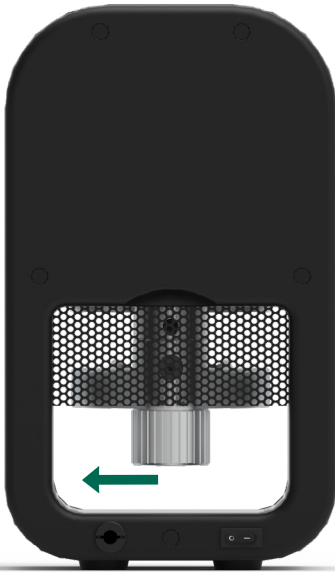


Fig. 2

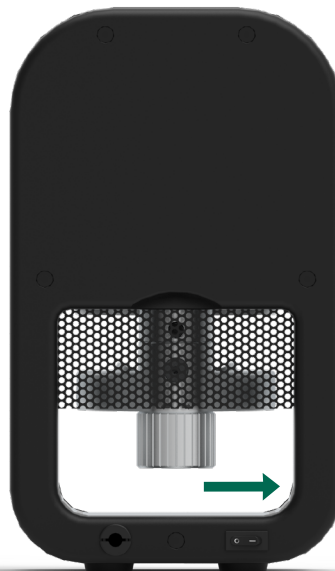


Fig. 3



Fig. 4

8. OPERATION

8.3. USE

The Cube Tamp is factory calibrated to a force of 20 kg.

If you want to save another default value to appear upon start up, turn on the main switch (9) and press the + button (3) while the Cube logo appears on the display during initialization. When the Cube logo blinks, increase or decrease the Kg using the - (2) and + (3) buttons and confirm the selection with the clean (4) button.

1. Turn on the power switch (9)
2. Insert the portafilter into the support (7) until it reaches the bottom. Its presence will be detected automatically and the coffee tamp will lower until it exerts the desired pressure
3. When the message (✓) appears on screen (1) you can remove the portafilter . Fig 5



Fig. 5

8.4. TAMPING FORCE REGULATION

The tamping force can be adjusted from 10 to 30 kg or from 22 to 66 lbs (this option must be factory set).

The default force is 20 kg or 44 lbs

To increase the force use the + button (3) and to decrease it use the - button (2)

8.4.1 CONFIGURATION LBS. AND KG.

When turning on the Cube, hold down the central button/Clean. Once in the Menu screen, the following message will appear:



Using the - (2) button, select the units of weight in Kg or the + (3) button to select the units in LB.

Once the selection has been made, the Cube will restart with the new configuration.

In the case of lbs. , the units will increase or decrease 2 by 2.

8. OPERATION

8.4.2 LOCKED KEYBOARD

To lock the digital display, simply press the + (3) and - (2) keys simultaneously for 3 seconds until the lock icon appears. **Fig 6**

To unlock the digital display just repeat the same steps until the unlock icon appears.

Fig 7



Fig. 6



Fig. 7

8.5. CLEANING MODE

For a correct tamping consistency, daily cleaning of the tamping disk is recommended.

To do this, press the (Clean) button. The disk will lower to the pressing position and stay there for 10 sec. During this time you can clean it with a brush, or cloth if the disc is wet.

Press the (Clean) button again to return the disk to its idle position.

If you want the disk to remain in the pressing position to allow more time for the cleaning, switch off the appliance using the switch (9)



9. TROUBLESHOOTING

PROBLEM	CAUSE	SOLUTION
The disk is stuck in the portafilter	The portafilter diameter is too small.	Follow the instructions for adjusting the support, turning it clockwise to separate it from the disk. Press the clean button to force the movement.
	The portafilter is conical and the amount of coffee is too low	
The disk does not lower	The Cube Tamp is not powered on	Make sure that the appliance is connected to the mains socket and that the ON/OFF switch is in the ON position.
	The support is too low and the portafilter has not been detected	Follow the instructions for adjusting the support, turning it counter-clockwise to bring it closer to the disk.
The tamping has not been strong enough	The tamping force has been set too low.	Select a higher pressing force using the (+) button
	The support is too low and the tamp cannot exert enough force	Follow the instructions for adjusting the support, turning it counter-clockwise to bring it closer to the disk
The tamping is too strong	The tamping force has been set too high.	Select a lower pressing force using the (-) button
The tamping is not level	The support is too loose.	Follow the instructions for adjusting the support, turning it counter-clockwise to bring it closer to the disk
	The ground coffee is not level before tamping	Level the ground coffee before tamping.
The coffee sticks to the tamping disk	The disk is dirty or damp	Follow the instructions in the cleaning section 8.5

10. DECLARATION OF CONFORMITY

In accordance with European community directives, quality certificates have been applied. All materials have been adapted and technical reports are available at our offices.

2014/30/UE on the approximation of the laws of the Member States relating to electromagnetic compatibility.

06/42/EC amending Directive 95/16/EC on the approximation of the laws of the Member States relating to machinery

REG. 1935/2004 amending Directive 89/109/EC on the approximation of the laws of the Member States relating to material and objects destined to make contact with nutritional products.

03/108/EC amending Directive 2002/96/EC on waste electrical and electronic equipment (WEEE).

2014/34/UE on the harmonization of the laws of Member States relating to electrical equipment designed for use within certain voltage limits.

2012/19/UE of 04/07/2012 on the approximation of the laws of the Member States on waste electrical and electronic equipment (WEEE).

11/65/EU related to the restriction on the usage of certain dangerous substances with electrical equipment and electronics.

Environment

Do not throw the appliance away with the normal household waste; hand it in at an official recycling collection point. By doing this, you will help to preserve the environment.

The Legal Representative

Jesús Ascaso



Compak Coffee Grinders, s.a.

Molí Barri, Parcela B - Pol. Ind. Can Barri - 08415 Bigues i Riells - Barcelona - Spain
Ph. 34 93 703 13 00 - Fax 34 93 703 13 23 - www.compak.es



Original Instructions
Ref. quality process 002/03 | v.05/08/2020 | K08021H03



CONTACT

Molí Barri, Parcela B
Polígono Industrial Can Barri
08415 Bigues i Riells
Barcelona - Spain

Phone: +34 93 703 13 00

Fax: +34 93 703 13 23

E-mail: info@compak.es

Website: www.compak.es