



DHIPD40/ARW/40-M-I

4 MEGAPIXEL IP TURRET CAMERA
WITH STARLIGHT TECHNOLOGY



4 MEGAPIXEL



2.7 - 13.5MM



40m IR



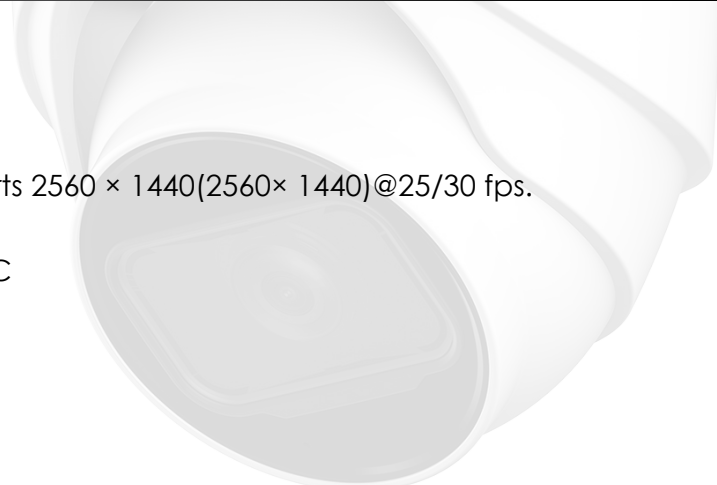
IP67

STARLIGHT



Key Features:

- 4 Megapixel progressive scan CMOS
- Motorised Lens : 2.7-13.5mm
- Outputs max. 4 MP (2688× 1520)@20 fps and supports 2560 × 1440(2560× 1440)@25/30 fps.
- Starlight Technology
- WDR(120dB), Day/Night(ICR), 3DNR, AWB, AGC, BLC
- Supports up to 256GB micro SD card
- Max. IR LEDs Length 40m
- IP67 waterproof
- DC 12V / PoE



SPECIFICATIONS

Model Number	DHIPD40/ARW/40-M-I
Image Sensor	1/2.9" 4MP CMOS
Effective Pixels	2688 (H) × 1520 (V)
ROM	128 MB
RAM	128 MB
Scanning System	Progressive
Electronic Shutter Speed	Auto/Manual 1/3 s–1/100,000 s
Min. Illumination	0.008 lux@F1.5(Color,30IRE) 0.0008 lux@F1.5(B/W,30IRE) 0 lux (Illuminator on)
IR Distance	40 m (131.23 ft) (IR LED)

(continued)

(continued)

IR On/Off Control	Auto / Manual			
IR LEDs Number	2 (IR LED)			
S/N Ratio	>56 dB			
Lens				
Lens Type	Motorized vari-focal			
Mount Type	φ14			
Focal Length	2.7 mm–13.5 mm			
Max Aperture	F1.5			
Angle of View	Horizontal: 104°–29° × Vertical: 54°–16° × Diagonal: 125°–34°			
Iris Type	Fixed			
Close Focus Distance	0.8 m			
DORI Distance	Detect	Observe	Recognize	Identify
	64-210 m	25.6-84 m	12.8-42 m	6.4-21 m
Pan/Tilt/Rotation				
Pan/Tilt/Rotation Range	Pan:0°~360°, Tilt:0°~78°, Rotation:0°~360°			
Intelligence				
IVS	Tripwire, Intrusion (the two functions support the classification and accurate detection of vehicle and human)			
Smart Function	Work together with Smart NVR to perform refine intelligent search, event extraction and merging to event videos.			
Video				
Compression	H.265; H.264; H.264H; H.264B; MJPEG (Only supported by the sub stream)			
Smart Codec	Smart H.265+; Smart H.264+			
Video Frame Rate	Main stream: 2688 × 1520@(1–20 fps)/2560 × 1440@(1–25/30 fps) Sub stream: 704 × 576@(1–25 fps)/704 × 480@(1–30 fps) *The values above are the max. frame rates of each stream; for multiple streams, the values will be subjected to the total encoding capacity.			
Stream Capability	2 streams			

(continued)

Resolution	2688 × 1520 (2688 × 1520); 2560 × 1440 (2560 × 1440); 2304 × 1296 (2304 × 1296); 1080p (1920 × 1080); 1.3M (1280 × 960); 720p (1280 × 720); D1 (704 × 576/704 × 480); VGA (640 × 480); CIF (352 × 288/352 × 240)
Bit Rate Control	CBR/VBR
Video Bit Rate	H.264: 32kbps-6144 kbps H.265: 12kbps-6144 kbps
Day/Night	Auto (ICR); Colour; B/W
BLC	Yes
HLC	Yes
WDR	120 dB
White Balance	Auto; natural; street lamp; outdoor; manual; regional custom
Gain Control	Manual; Auto
Noise Reduction	3D NR
Motion Detection	OFF/ON (4 areas, rectangular)
Region of Interest (RoI)	Yes (4 areas)
Smart Illumination	Yes
Image Rotation	0°/90°/180°/270° (Support 90°/270° with 2688 × 1520 resolution and lower)
Mirror	Yes
Privacy Masking	4 areas
Audio	
Built-in MIC	Yes
Audio Compression	G.711a; G.711Mu; G.726; PCM
Alarm	
Alarm Event	No SD card; SD card full; SD card error; network disconnection; IP conflict; illegal access; motion detection; video tampering; tripwire; intrusion; audio detection; voltage detection; defocus detection; SMD; security exception

Network	
Network Port	RJ-45 (10/100 Base-T)
SDK and API	Yes
Network Protocol	IPv4; IPv6; HTTP; TCP; UDP; ARP; RTP; RTSP; RTCP; RTMP; SMTP; FTP; SFTP; DHCP; DNS; DDNS; NTP; Multicast; ICMP; IGMP
Interoperability	ONVIF (Profile S/ Profile T); CGI; P2P; Milestone
User/Host	6 (Total bandwidth: 36M)
Storage	FTP; SFTP; Micro SD card (support max. 256 GB)
Browser	IE; Chrome; Firefox
Management Software	SPRO CSS
Mobile Client	iOS; Android
Cyber Security	Video encryption; Configuration encryption; Digest; WSSE; Account lockout; Security logs; IP/MAC filtering; Generation and importing of X.509 certification; syslog; HTTPS;802.1x; Trusted boot; Trusted execution; Trusted upgrade
Certification	
Certifications	CE-LVD:EN62368-1; CE-EMC:Electromagnetic Compatibility Directive 2014/30/EU; FCC: 47 CFR FCC Part 15, Subpart B
Power	
Power Supply	12 VDC/PoE (802.3 af)
Power Consumption	Basic: 1.9 W (12 VDC); 2.8 W (PoE) Max. (H.265+intelligence on +WDR +IR on): 6.1 W (12 VDC); 7.3 W (PoE)
Environment	
Operating Temperature	-30 °C to +60 °C (-22 °F to +140 °F)
Operating Humidity	≤95%
Storage Temperature	-40 °C to +60 °C (-40°F to +140°F)
Protection	IP67

Structure

Casing Material Metal

Product Dimensions 108.3 mm × Φ 122 mm (4.26" × Φ 4.80")

Net Weight 0.86 kg (1.90 lb)

Gross Weight 0.69 kg (1.52 lb)

Dimensions (mm[inch])

