

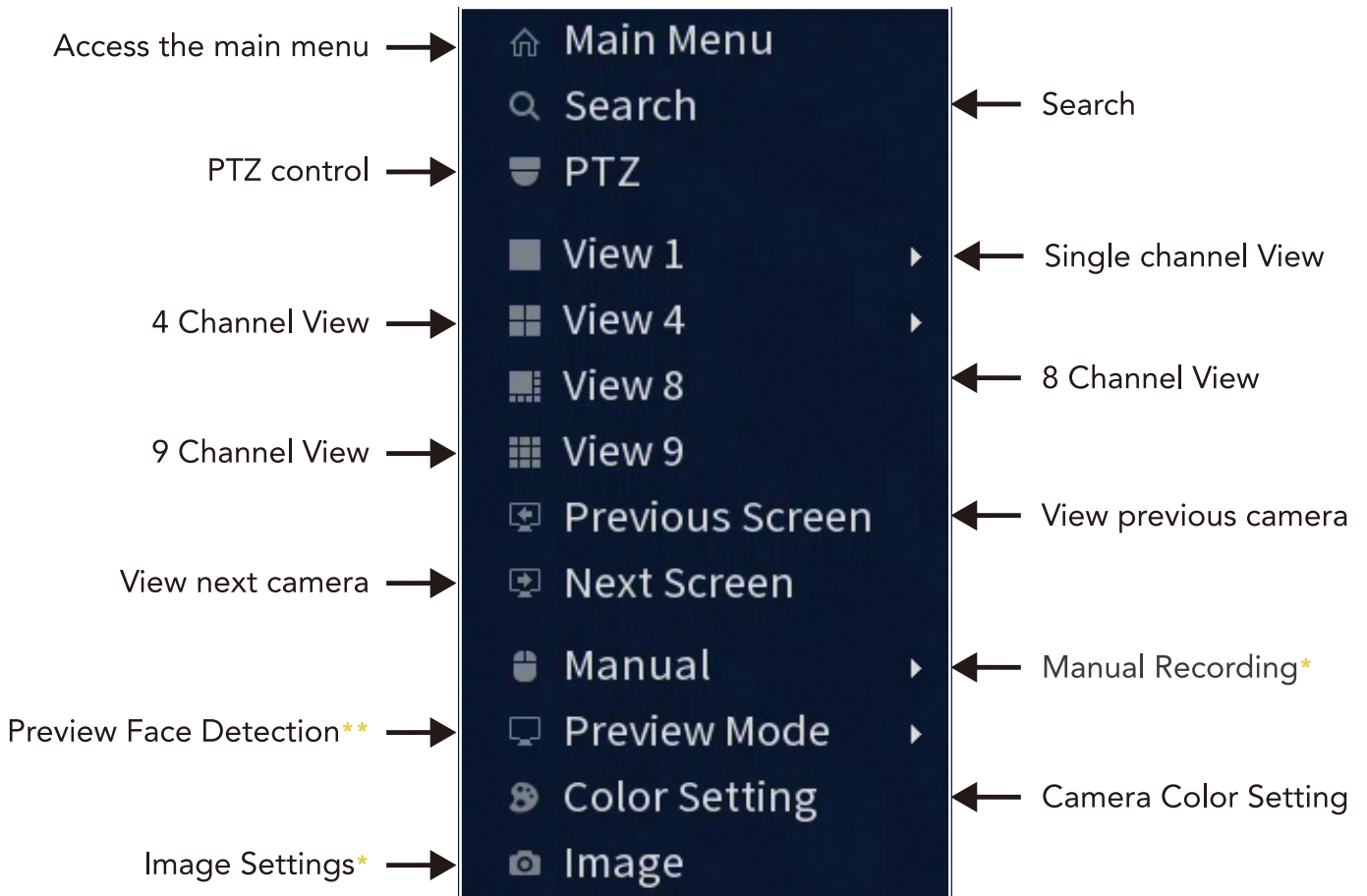
DVR / NVR End User Guide

Contents /

Quick Access Menu	3
Live View	4
Instant Play in Detail	5
Digital Zoom in Detail	6
Access to the main menu	7
Playback	8
Smart Search	9
Backup	10
Adding IP Cameras to an SPRO system	11
Smart Phone Viewing - Quick Setup	15
SPRO CS Software	16
Recommended settings	18

Quick Access Menu /

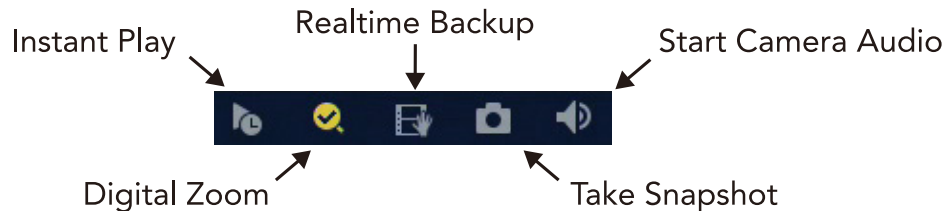
The quick access menu gives access to screen layouts, PTZ Control, Playback and the main menu. To access this menu you will need to click on the right mouse button.



* Suggested Engineer access only
** May not be available on all models

Live View /

Each individual camera will have a quick access toolbar as shown below. To access this toolbar just hover your cursor over the top of the camera view



INSTANT PLAY

Clicking on this button will take you to the last 5 minutes of playback for that camera. This allows you to quickly check on events you have just seen. The amount of time that will playback can be changed to up to 60 minutes from the installer menu.

DIGITAL ZOOM

Digital Zoom will allow you to zoom into an area of the camera view to view smaller objects in greater detail.

REALTIME BACKUP

Realtime backup allows you to backup events you are currently seeing in live view. To use this feature you will need a USB flash drive inserted into the DVR.

TAKE SNAPSHOT

Clicking on this button will allow you to take a snapshot of any particular camera and transfer it directly to an attached USB drive.

START CAMERA AUDIO

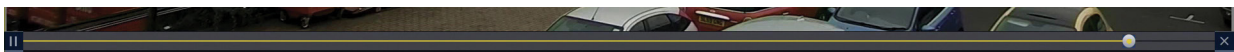
If your camera supports audio then you can click on this button to hear the audio provided by the camera.

Instant Play in Detail /

To access instant Play move your cursor to the top of the cameras view and select "Instant Play"



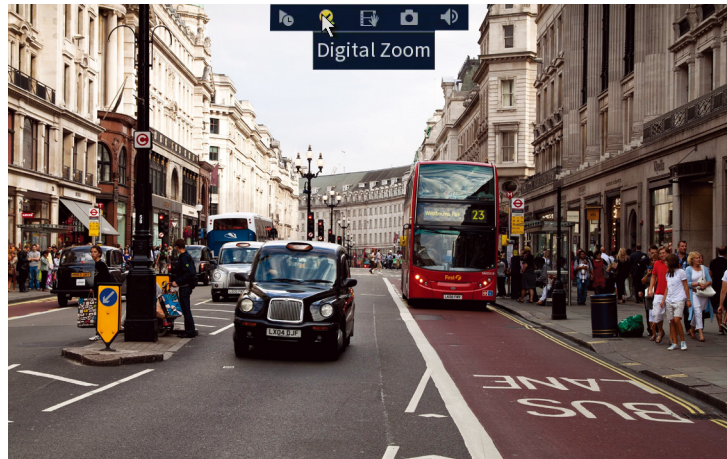
The selected camera will playback the last five minutes of recorded footage and you can skip forward / back by clicking on the time bar as shown below.



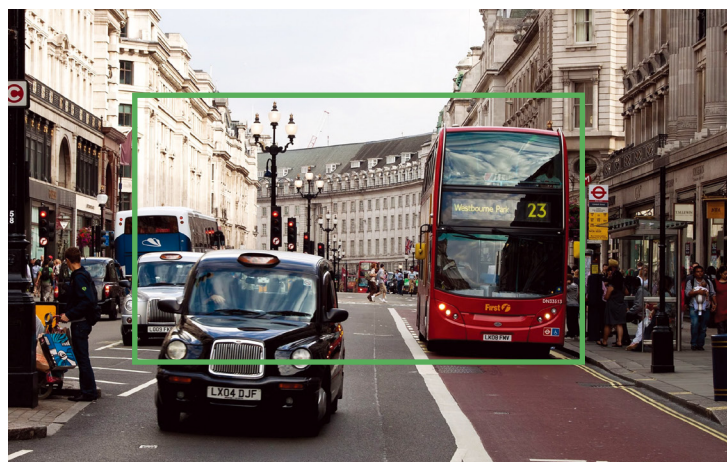
To jump back to the live view just press the X at any time.

Digital Zoom in Detail /

To access the digital zoom function, move your cursor to the top of the camera view and click on the "Digital Zoom" button.



Once selected simply click and hold the left mouse button and drag to draw a box



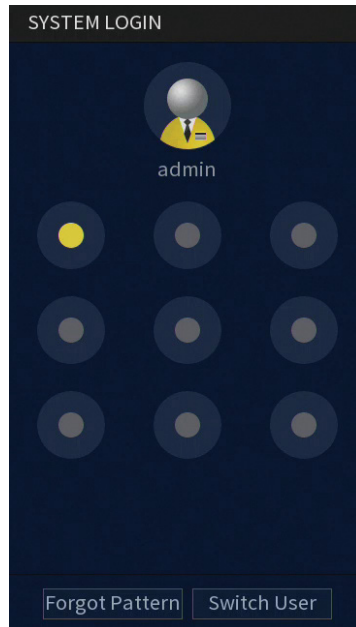
When you are happy with the area selected, let go and the image will zoom in.



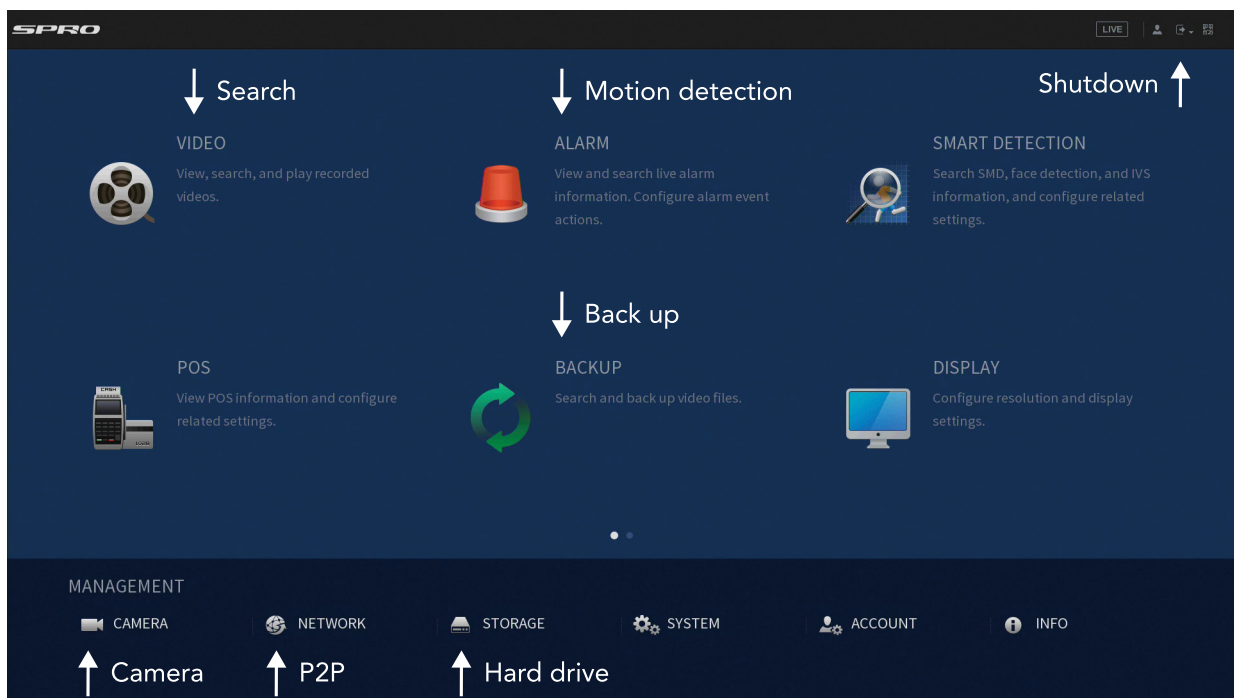
PLEASE NOTE: THIS IS DIGITAL ZOOM SO SOME LOSS OF QUALITY WILL BE APPARENT.

Access to the Main Menu /

After clicking on Main Menu you will be prompted to input your unlock pattern.

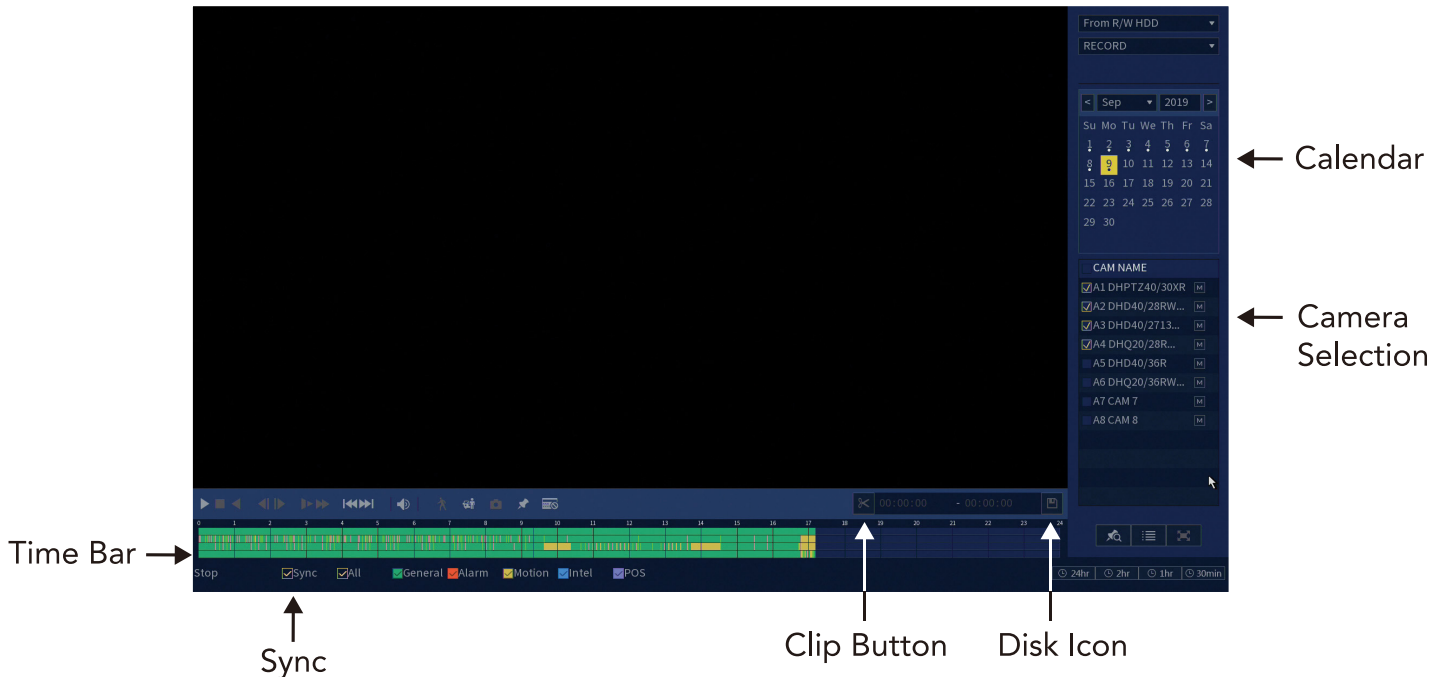


Your individual login credentials will be given to you by your CCTV engineer. Once logged into the system you will have full access to the main features of the recorder.



Playback /

To access Playback you will need to right click on the mouse and select "MAIN MENU" and "VIDEO".



CALENDAR

Use this to select the required date for playback, a dot indicates that footage is available for that day.

VIEW SELECTION

This allows you to select up to 16 cameras to playback at the same time.

TIME BAR

The time bar shows what footage is available and the type of footage available. Double click anywhere on this bar to start the playback from that time.

SYNC

Clicking Sync allows you to either playback all of the selected cameras at the same time or adjust the time of individual cameras.

CLIP BUTTON

If you need to backup footage then using the clip function is the easiest way. Simply click on it once whilst playing back to select your start time and click again to select your end time.(See Backup Section for more information)

DISK ICON

Once you have selected your start and end time simply press this button to go to the backup screen.

Smart Search /

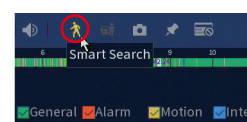
Smart Search allows you to skip through the playback to sections where movement was found. This means you will no longer need to sit through hours of footage to find a particular event.

****PLEASE NOTE****

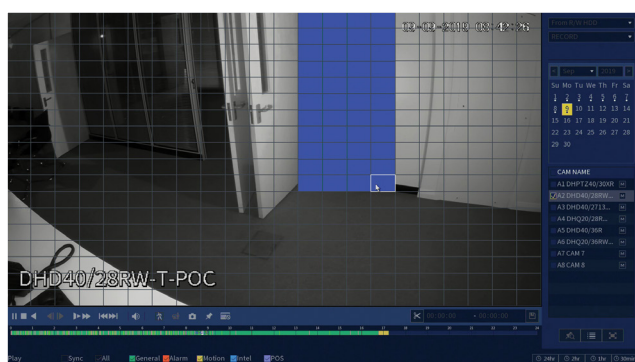
To use the Smart Search feature Motion Detection will need to be enabled.

To use Smart Search, select the camera you require and double click to make this full screen.

Then select the smart search icon as shown below.



A grid will fill the screen and you will be able to select the area of movement you are interested in. To fill the squares simply click the left mouse button and drag.



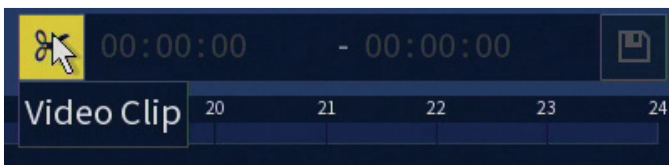
Once you are happy with your selected area then click on the Smart Search button again to activate the search.

The DVR will now automatically play all of the motion detection found in that area for that day. If you would like to back any of these events up then click on the file list button.

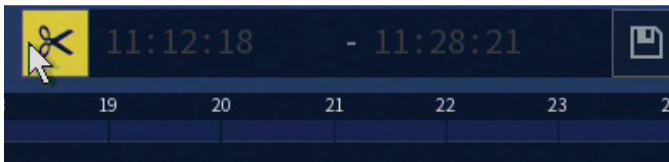
Backup /

The easiest way to backup is to use the Clipping tool direct from the playback screen. To use this feature follow the simple steps below.

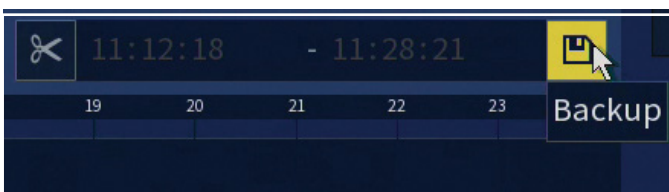
- ➔ Select your required camera and start to playback
- ➔ Navigate to your required start time by using the time bar
- ➔ Click once on the scissors icon to select the start time



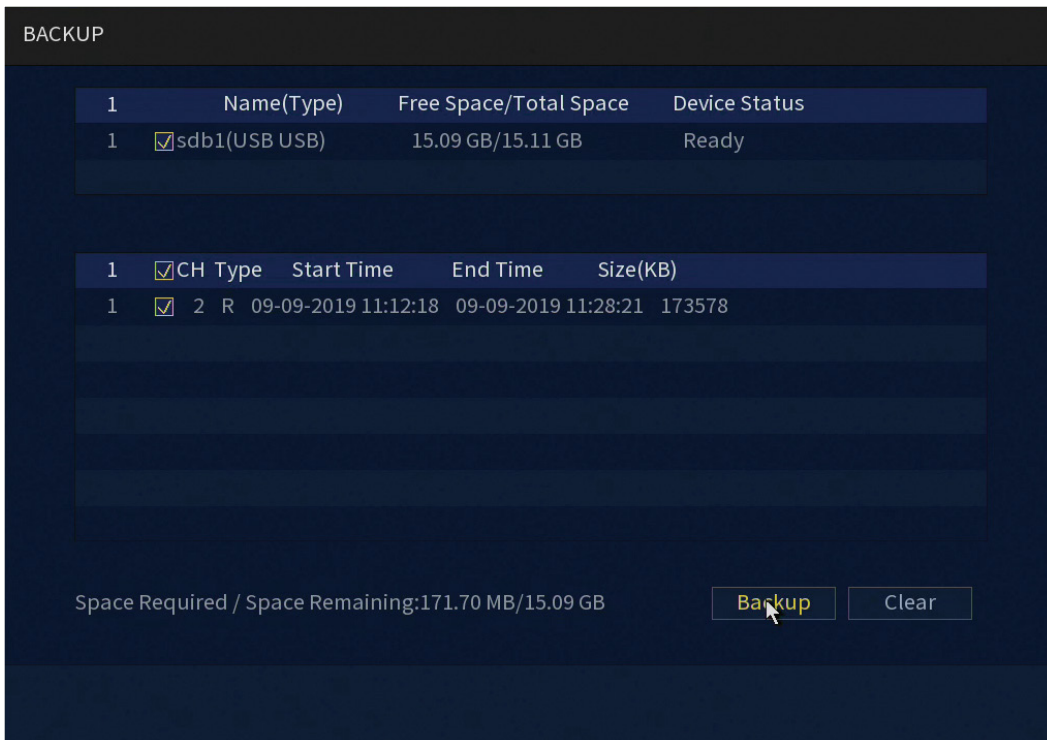
- ➔ You can then either continue to watch the playback until the end time or jump to an end time by clicking again on the time bar.
- ➔ When you are happy with your end time, click one more time on the scissors to finalise the end time.



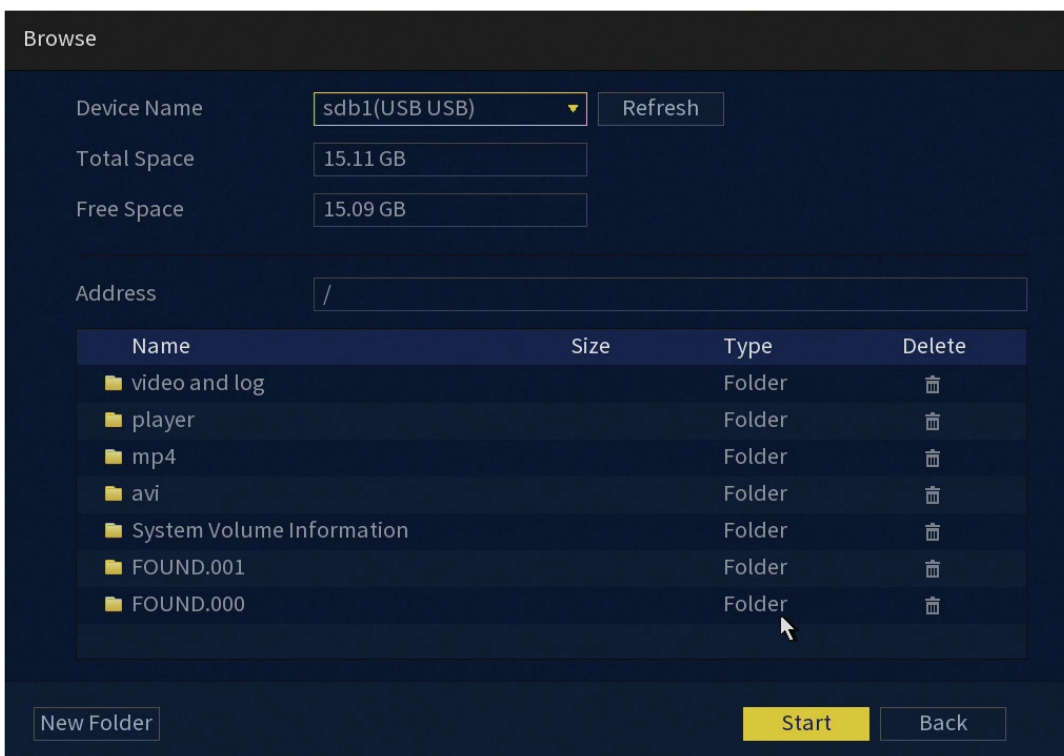
- ➔ You can now click on the disk icon to go to the backup screen



- ➔ When on the backup screen, you will see the times you have chosen, along with the detected USB device.

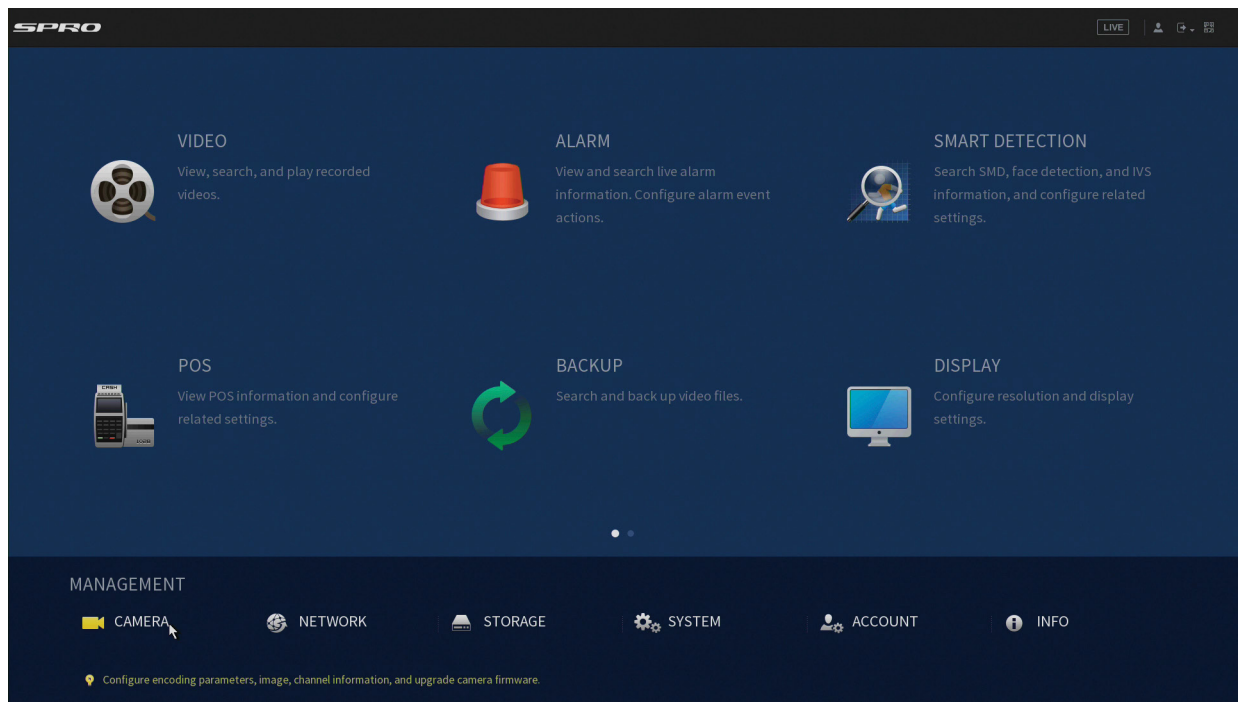


➔ When you click on the Backup button you will be asked to select the location on the USB device you would like to save the files to



➔ Finally click on START to back up the files.

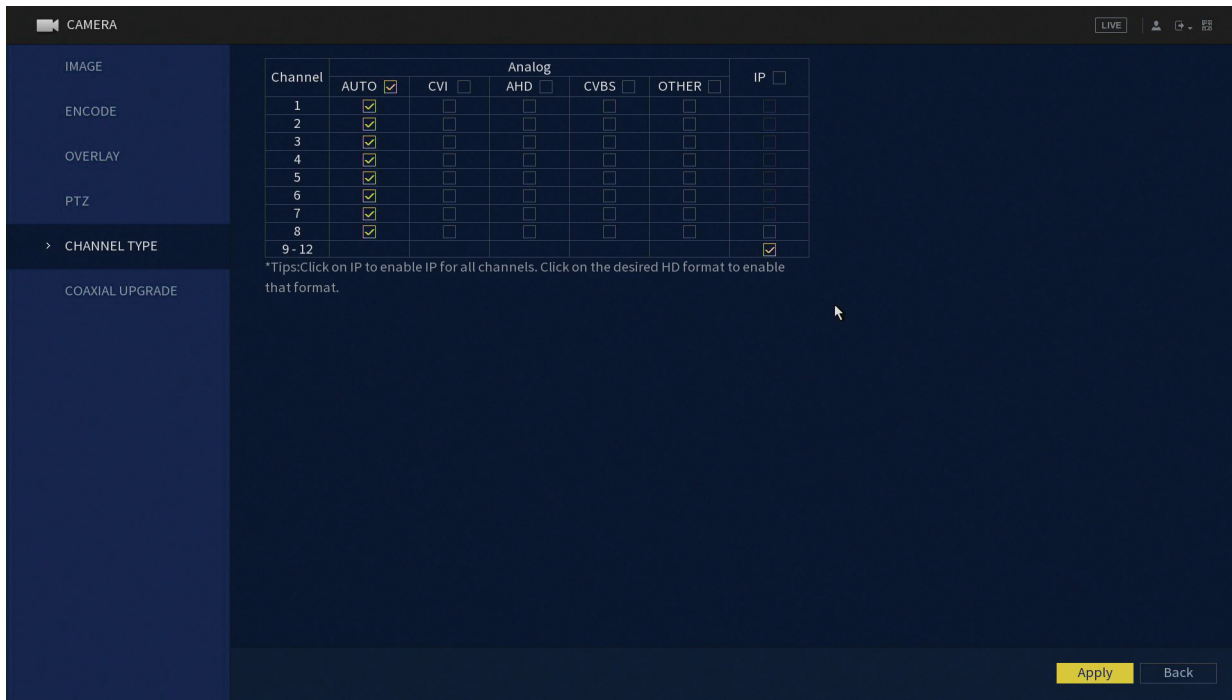
Adding IP Cameras to an SPRO system /



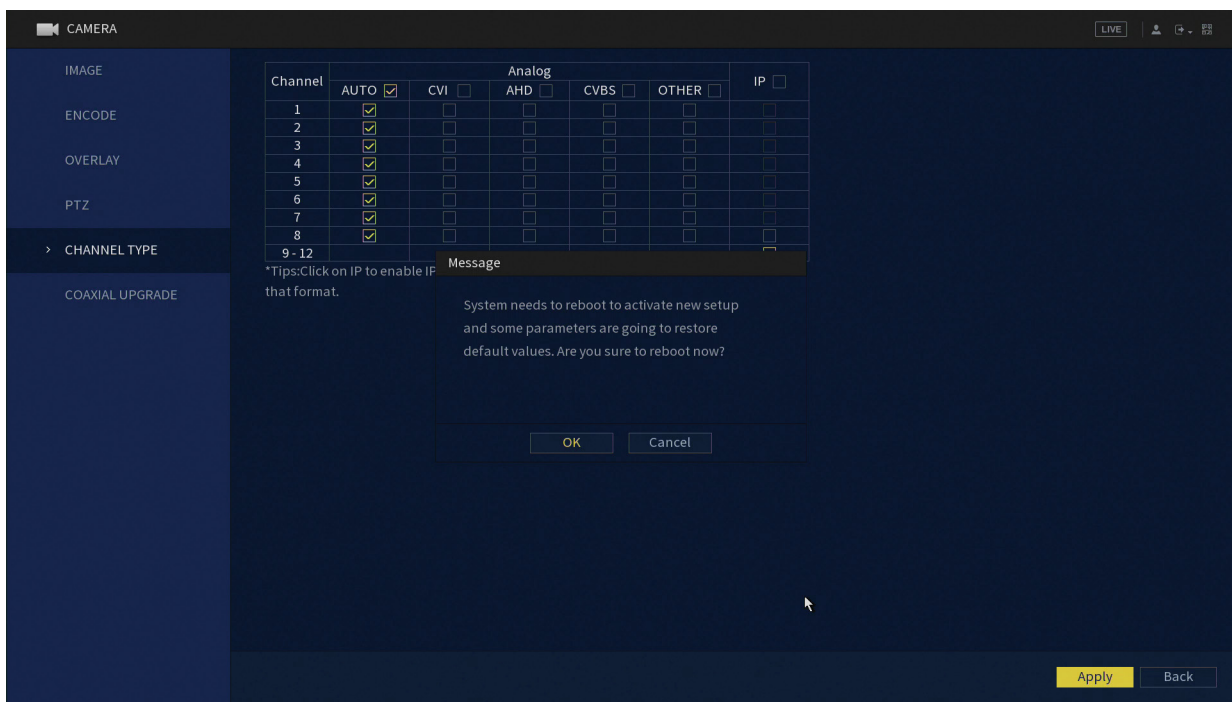
➔ Right click and select "Main Menu", and then click on "CAMERA".

Adding IP Camera to SPRO system

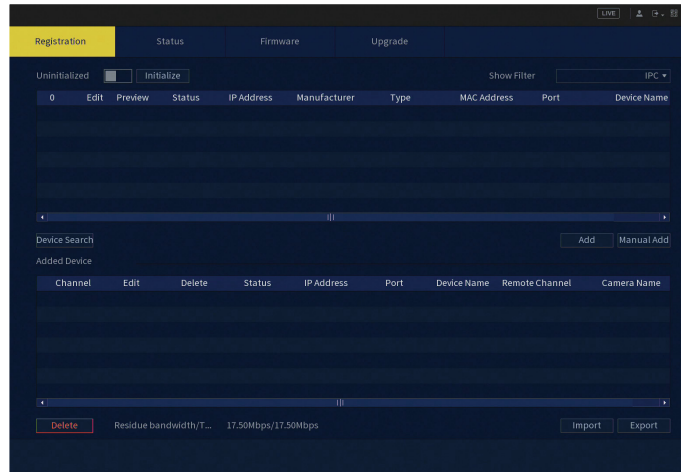
- ➔ Click 'CHANNEL TYPE' and tick the bottom box in the IP column and click APPLY.



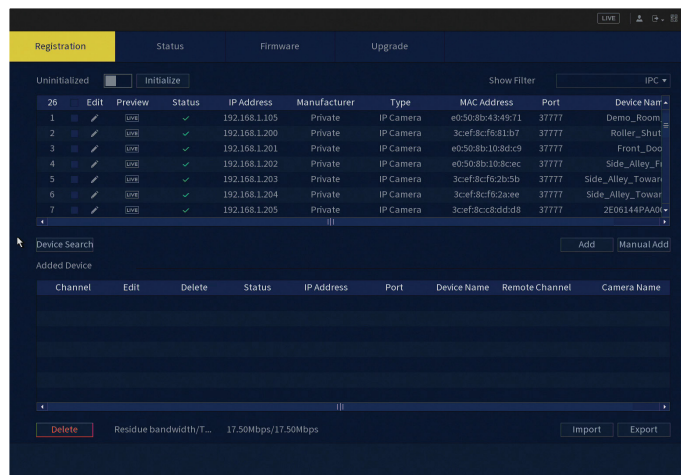
- ➔ A message will appear asking you to confirm, click 'OK' and the system will reboot.



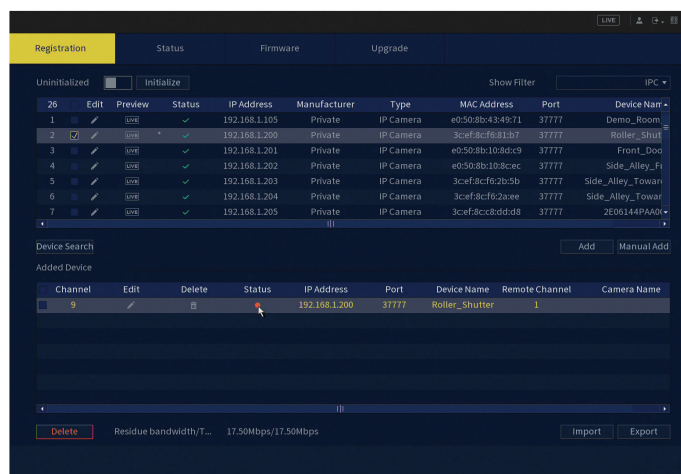
- ➔ Once the system has rebooted, right click and select 'MAIN MENU' then 'CAMERA' and then 'REGISTRATION'.



➔ Click 'DEVICE SEARCH'




➔ Select the IP Camera you want to add. If it's an SPRO IP camera make sure the manufacturer is set to private and click 'ADD'.



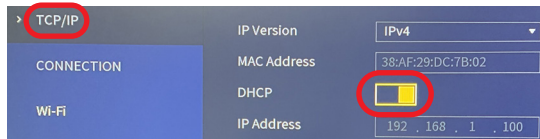
➔ The status will be 'red', wait until it turns 'green'

Smart Phone Viewing - Quick Setup /

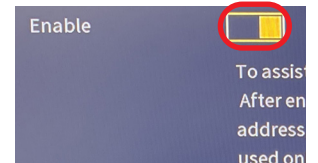
* Before phone setup please make sure that the DVR is connected to the router.*

1 On the main menu go to NETWORK 

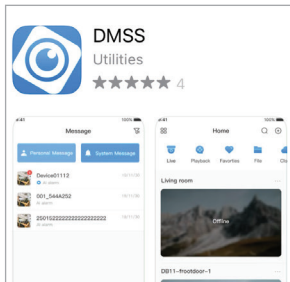
2 In the TCP/IP tab turn DHCP on and apply it at the bottom



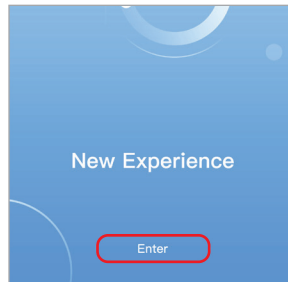
3 Go to P2P. If the status is offline click the ENABLE box and then SAVE. The status will now display online



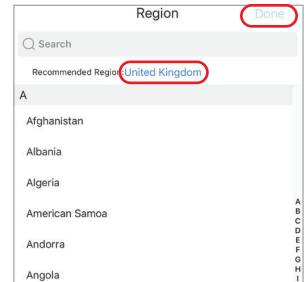
4 Search and download DMSS from your app store.



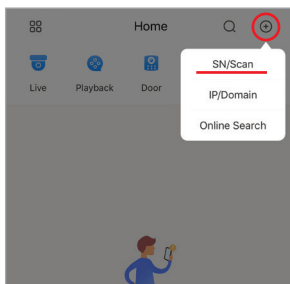
5 Click the Enter button.



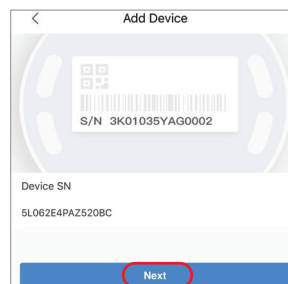
6 Select your region and click done.



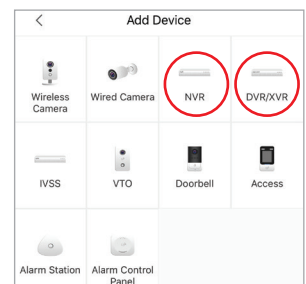
7 Click on the plus symbol and select SN/Scan.



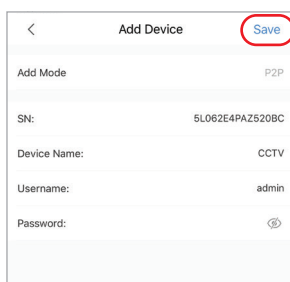
8 After scanning your QR code click next.



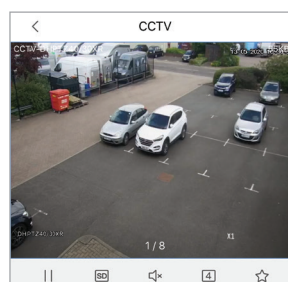
9 Select the type of device you have.



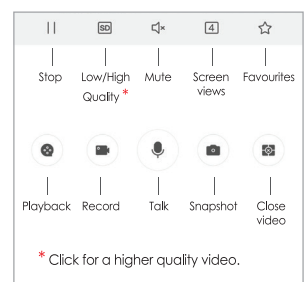
10 Give the Device a name and enter the password for the recorder and then click save.



11 The live view will now start.



12 Icon Explanation.

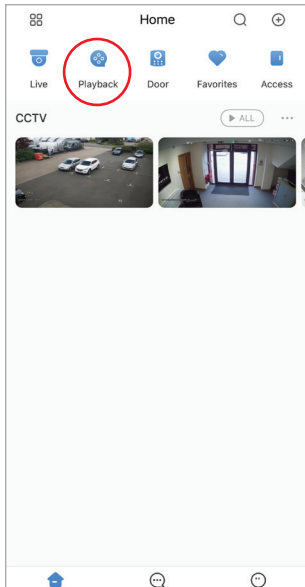


Smart Phone Viewing - Playback /

* Before playback please make sure that you have completed the quick setup.*

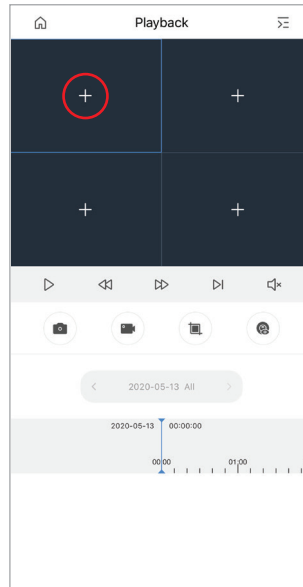
1

From the Home screen click playback.



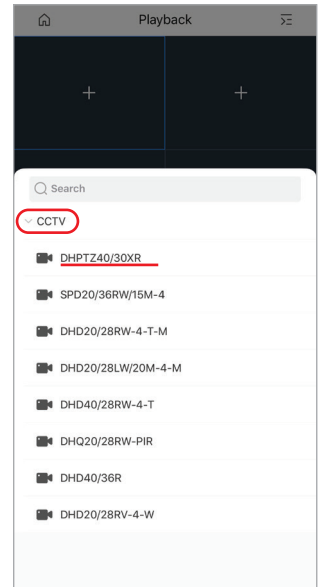
2

Select the plus symbol on one of the blank screens.



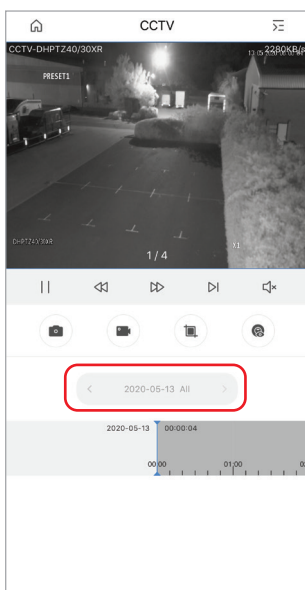
3

Select your site and camera from the list.



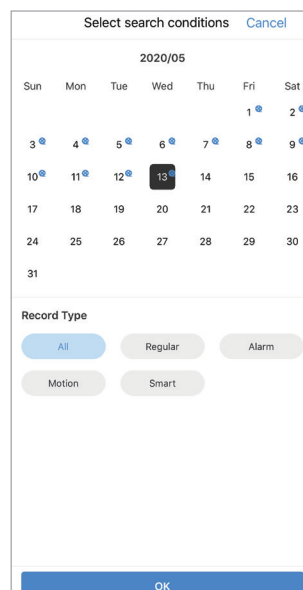
4

Click on the date to select alternative dates/times.



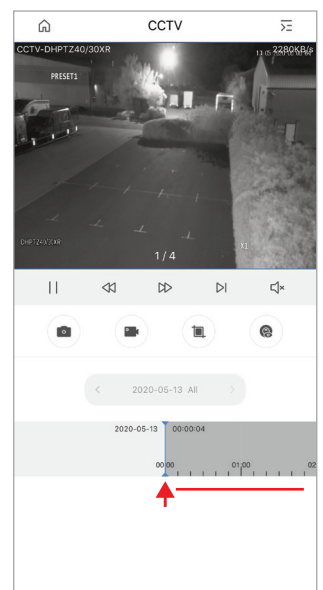
5

Select the date you require and click OK.



6

Use the slider to adjust the playback time.



Recommended settings /

Resolution	Suggested Bit Rate	Suggested frame rate
8MP - 4K	→ 6144	→ 7
5MP	→ 4096	→ 12
4MP	→ 4096	→ 15
2MP - 1080P	→ 4096/2048	→ 15
1080N	→ 2048	→ 15

*Please note: Not all resolutions will be available on all recorders.

*If you have any problems with remote viewing, please email support@sprocctv.com

SPRO[®]
SECURITY YOU CAN TRUST
