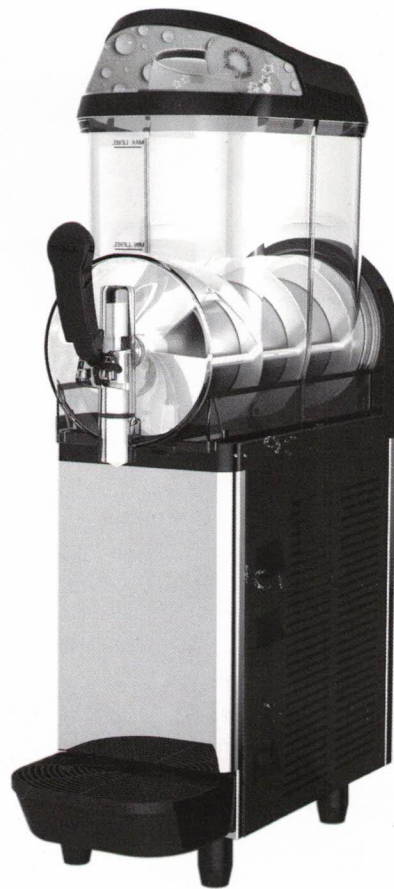


Slush Dispenser

Operating Instruction



Slush Dispenser

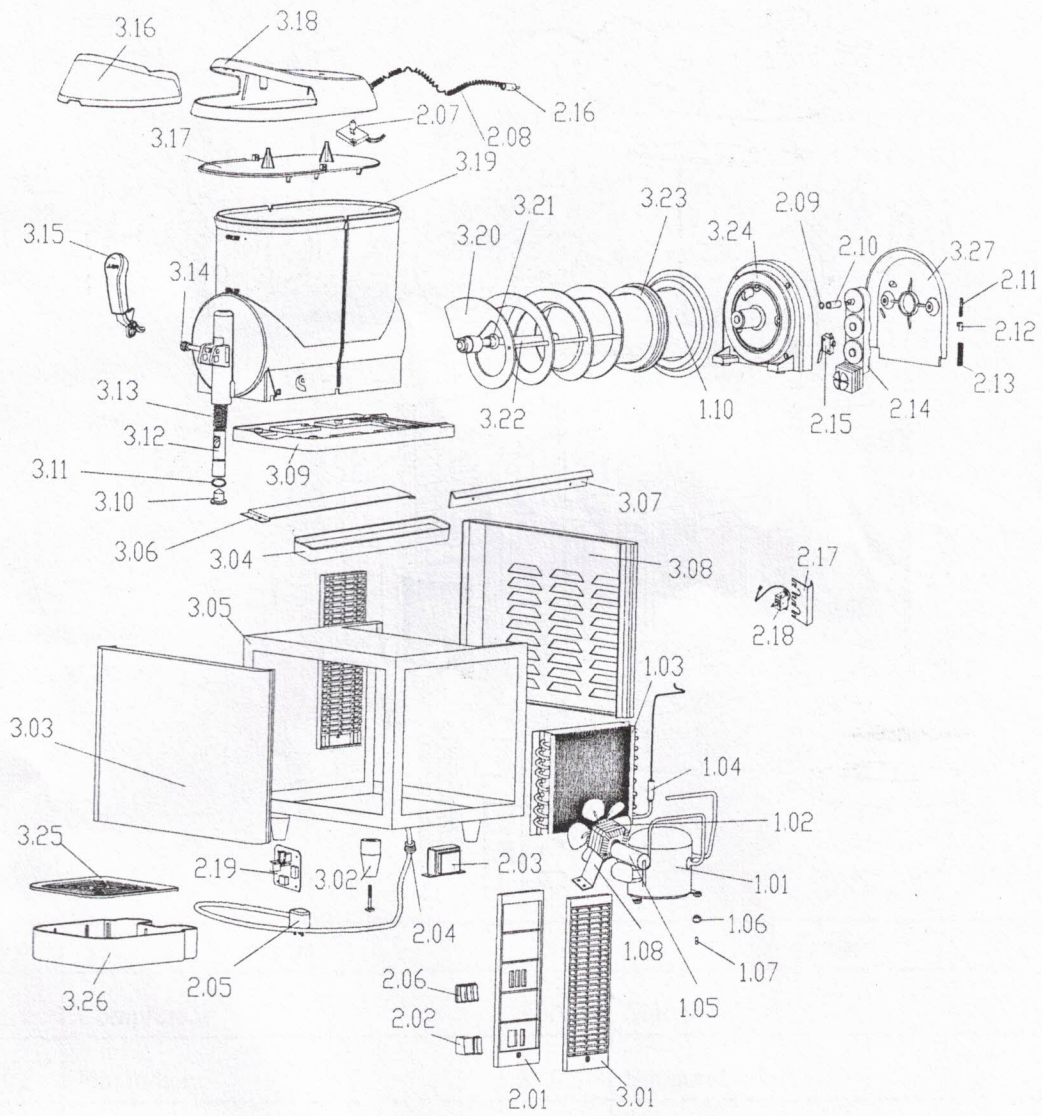


Content

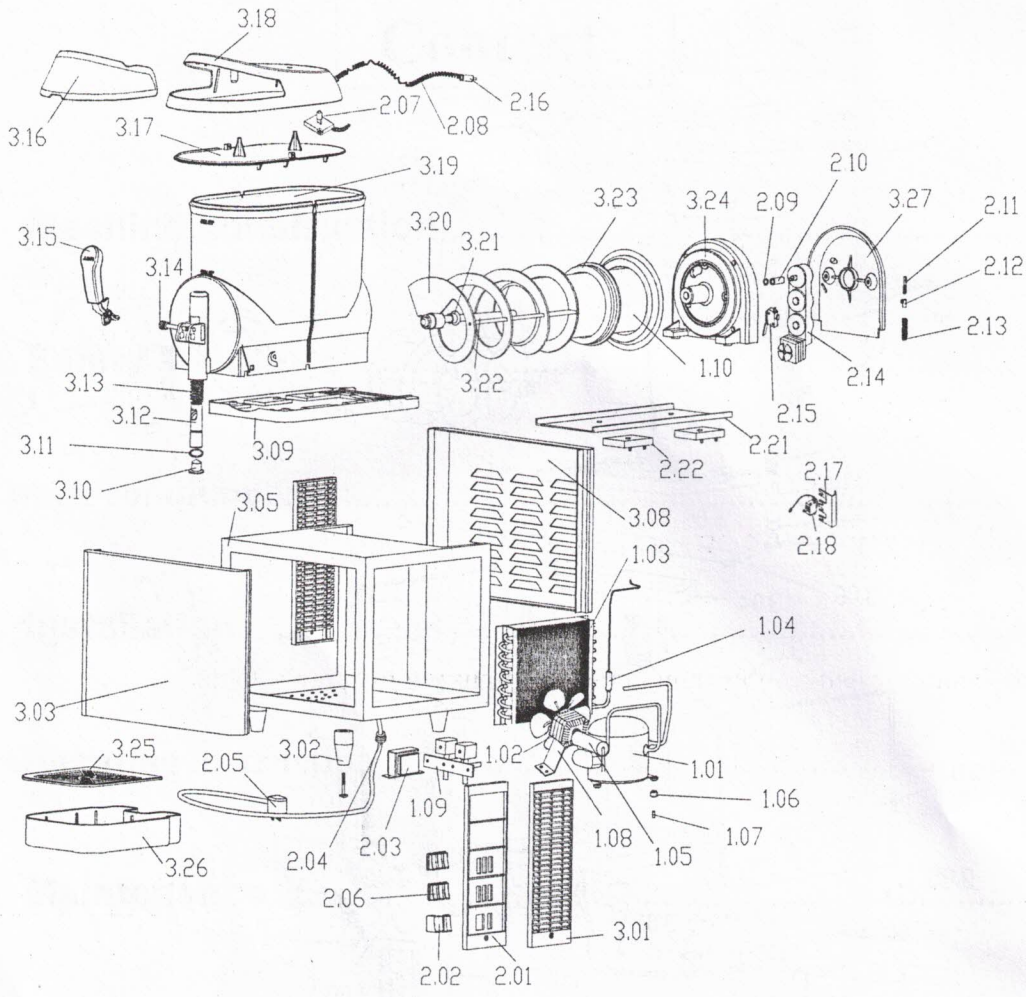
I	Machine construction	1
II	Safety attention	5
III	work condition	5
IV	Installation	6
V	Operating instruction	6
VI	Maintenance	9
VII	Trouble shooting guide	11
VIII	Specification and electrical diagram	12

I Machine construction

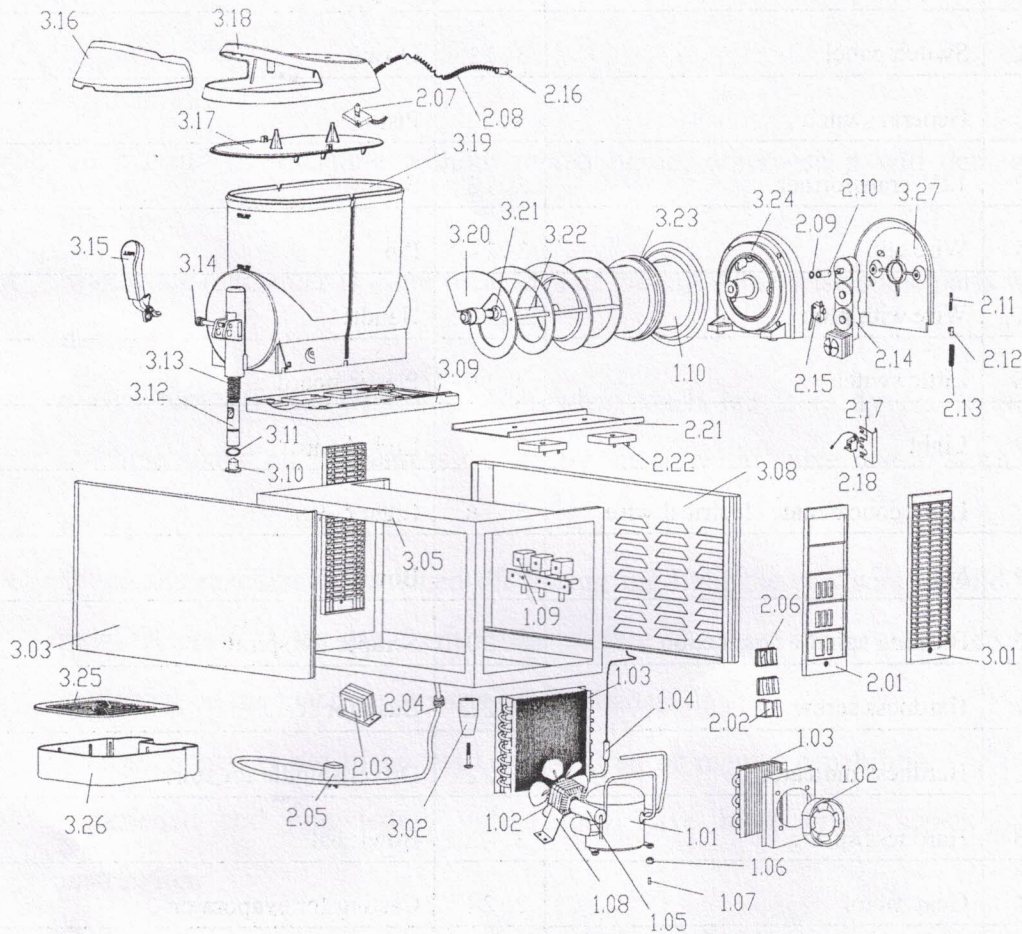
XC112



XC224



XC336A



No	item	No	item
1.01	Compressor	3.01	Side panel
1.02	Fan motor	3.02	Supporting feet
1.03	Condenser	3.03	Front panel
1.04	Filter	3.04	Bottle holder casing
1.05	Compressor capacitor	3.05	Frame
1.06	Compressor bearing	3.06	Cover board
1.07	Compressor mat	3.07	Mounted plate
1.08	Bracket for fan motor	3.08	Back metal casing

1.09	Solenoid valve	3.09	Plastic casing for below tub
1.10	Evaporator	3.10	Plug
2.01	Switch panel	3.11	O-ring
2.02	General switch	3.12	Piston
2.03	12V Transformer	3.13	Spring
2.04	Wire clip	3.14	Pin
2.05	Wire with plug	3.15	Handle
2.06	Little switch	3.16	Plastic board
2.07	Light	3.17	Light board
2.08	Light concatenate electrical wire	3.18	Light cover
2.09	Mat	3.19	Bowl
2.10	Bushing spindle connection	3.20	Scraper for spiral
2.11	Hardness screw	3.21	Bush for seal
2.12	Hardness indicator	3.22	Driver spindle for spiral
2.13	Hardness spring	3.23	Bowl seal
2.14	Gear motor	3.24	Casting for evaporator
2.15	Limited switch	3.25	Cover of drip tray
2.16	Light cover wire	3.26	Drip tray
2.17	Bracket for thermostat	3.27	Gear motor cover
2.18	Thermostat		
2.19	Circuit board		
2.20	Electric		
2.21	Bracket for delayed relay		
2.22	Delayed relay		

II Safety attention

Please read following instruction before use the machine:



Attention

- ★ Do not run the machine without mixed liquid; otherwise it will damage the machine.
- ★ Make sure that sugar is more than 13% of mixing. Otherwise some parts will be damaged.
- ★ Please turn off refrigeration switch when slush ice is ready for serve. The machine sound click which is caused by the solenoid valve due to slush ice is thick.
- ★ When the machine is switched off during the light there is some liquid in the bowl. A crust of ice can form at the surface. Remove the crust of ice before switching on the machine or parts can be damaged.
- ★ The appliance is not to be used by children or mental capabilities, or lack of experience and knowledge, unless they have been given supervision or instruction.
- ★ Children being supervised not to play with the appliance.

WARNING: fill with potable water only.



- ★ For your safety, please make sure the machine is well grounding.
- ★ If the wire is damaged, it must be changed by maintenance persons.
- ★ Do not insert sticks into the machine when it is running.
- ★ Make sure to turn off power and unplug before maintenance .

III work condition

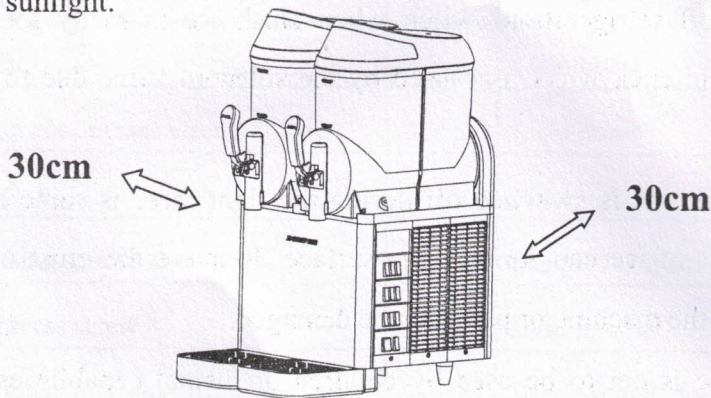
- (1) ambient temperature: 5~35 °C
- (2) ambient humidity: less than 90%

- (3) mixing temperature: less than 35 °C
- (4) voltage range: 220V ± 10% 115V ± 10%
- (5) Hz: 50 ± 1Hz 60 ± 1Hz

IV Installation

The machine must be positioned on a leveled stand. Make sure that a space of at least 30cm is left around the machine to avoid overheating.

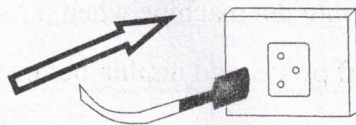
For the same reason, the machine must not be next to heat generating appliances and in the direct sunlight.



Make sure that the electrical supply corresponds to the electrical rating of the machine, which is indicated on the technical data plate. Plug the machine to a socket with earth plate.

V Operating instruction

(1) Plug the machine to a socket with earth plate. Do not use multiple plugs.

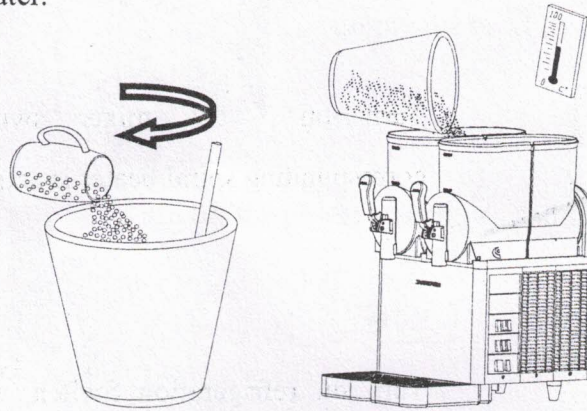


(2) Fill bowls

Fill the mixed liquid in the bowl(s) from the top.

--The temperature of the mixed liquid may not be more than 35°C.

- The sugar content of the mixed liquid must be more than 13%, otherwise beater and gear motor will be damaged.
- When the level of liquid is under the middle of the beater and you must refill up the bowl, otherwise the thickness will be to thick and some parts will be damaged. Remember to turn off the machine when you refill.
- Never use pure water.



3) Start slush ice production

XC112

XC224

XC336A

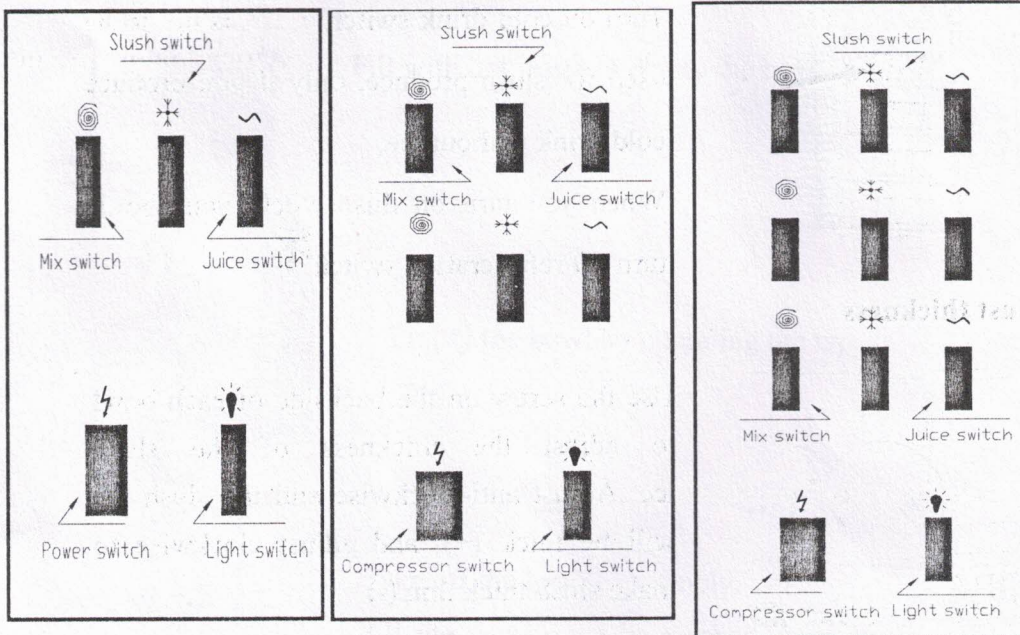
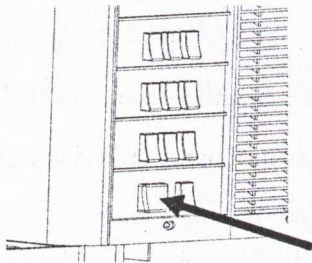
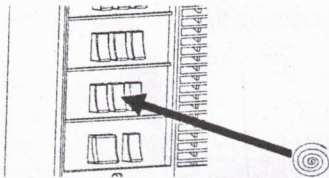


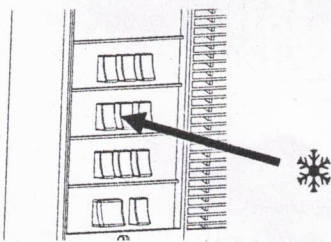
Diagram of switches panel



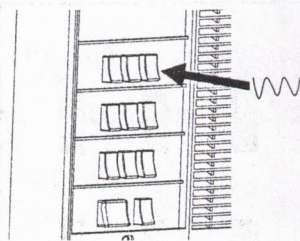
Turn on ⚡ power switch,
fan motor will be start work.



Turn on ⦿ mixer switch, the
corresponding spiral beater is activated.



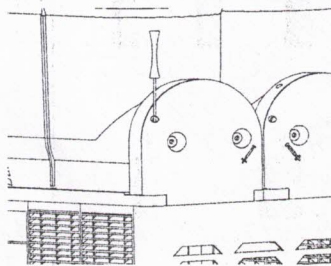
Turn on refrigeration Switch ❄️, the
corresponding refrigeration system is
activated.



Turn on cold drink switch ~~~, is not to be
used for slush produce, only if you produce
cold drink without ice.

When you turn on this switch, you should
turn off refrigeration switch ❄️.

4) Adjust thickness

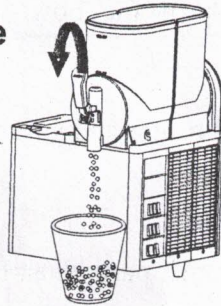


Use the screw on the backside of each bowl
to adjust the thickness of the slush
ice. Adjust anti-clockwise and the slush ice
will be thick (+), and adjust clockwise to
make slush thick thin (-)

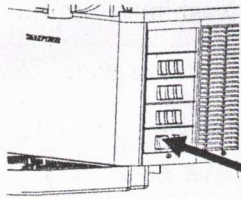
5) Dispensing

Put the coup underneath the tap and the handle level must be pushed down to dispense.

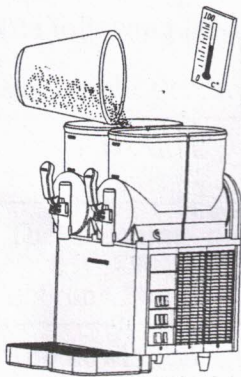
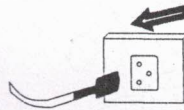
VI Maintenance



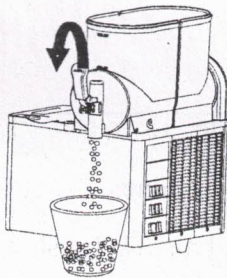
Turn off all function switches.
Empty the bowl by operating the tap.



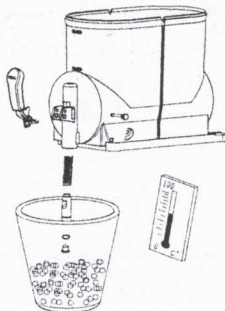
Turn off the power switch ⚡ and unplug



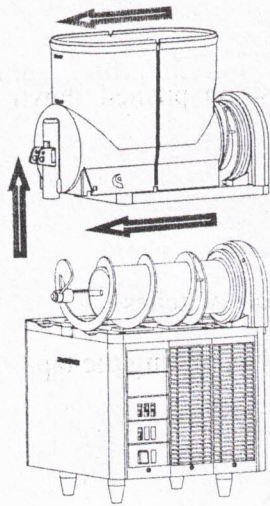
Fill with hot water to empty the bowls totally



Empty the bowl by operating the tap



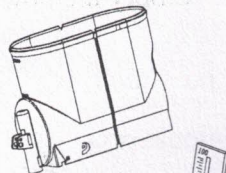
Take off the handle assembly.
All the parts must be washed carefully in
clean water



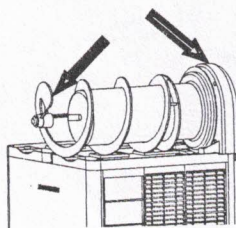
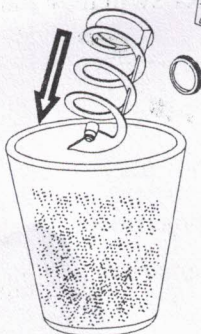
Lift the front of the bowls until its release.

Remove the back of the bowl until the bowl is complete off.

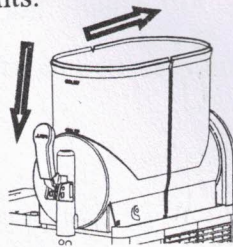
Take off the spiral beater and gasket of bowl.



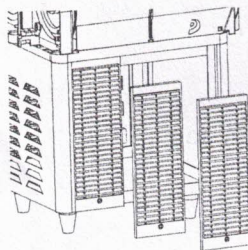
All parts must be cleaned with a mild dish washing liquid detergent and use clean water to rinse. Never use abrasive agents.



Lubricate gaskets with Vaseline before it is replaced.

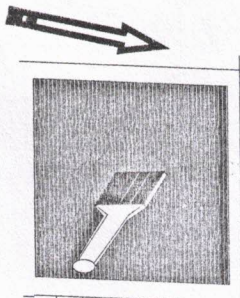


Spiral beater and bowl are placed. When the bowls is being replaced you must hear a click.

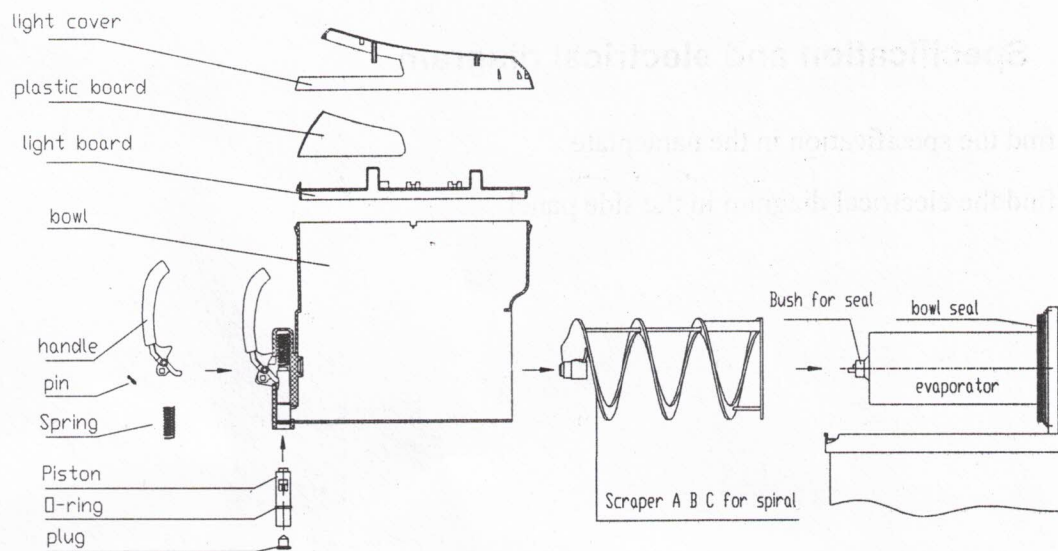


From time to time provide to clean the condenser located inside the machine.

Remove the side panels and use a brush to stroke in the direction of the cooling fins. A clogged condenser prevents a good performance of the machine



Bowl assembling



VII Trouble shooting guide

The following table shows the possible trouble and how to solve it. In case that there is a complicated trouble, please ask maintenance men for help.

Trouble	Possible causes	Remedy
The machine does not run	1. plug is not in position 2. fuse is broken	1. plug again 2. replace fuse
The bowls rear side leak	1. gasket improperly installed 2. worn or nicked bowl gasket	1. reinstall gasket 2. replace gasket
Tap leak	1. tap lever is not in its seat 2. o-ring is not clean or worn	1. make the tap lever in its seat 2. clean and replace it
Vibration and noise	1. the machine doesn't be positioned on a level stand 2. The sugar content of the beverage is less	1. put the machine on a level stand 2. increase the sugar content