

VTPV-LED

Construction:

- Steel chassis and end caps
- Perforated Front
- Diffuser is white smooth acrylic

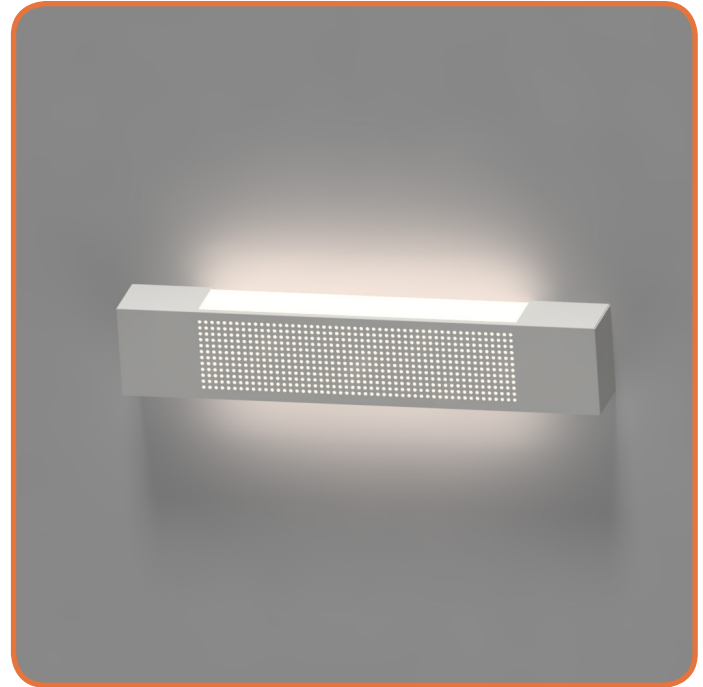
Light Source:

- LED
- Dimming (0 - 10v) to 10% **Included**

Notes:

- Mounts to standard J-Box with slotted anchor holes
- Optional battery backup (36" or 48" only)
- Vertical or Horizontal mounting
- ADA compliant
- Optional independent nightlight circuit -Uplight only circuit
- UL and CUL listed **DAMP** location
- LED Components
 - Replaceable Module
 - CRI > 80
 - Universal 120/277 volt standard
 - 5-Year Warranty on LED Components

Type:	
Job Name:	



WALL

CEILING

PENDANT

OUTDOOR

VTPV-24-LED

Height - 4 1/4"
Depth - 3"
Length - 24"

VTPV-36-LED-

Height - 4 1/4"
Depth - 3"
Length - 36"

VTPV-48-LED-

Height - 4 1/4"
Depth - 3"
Length - 48"



ORDERING INFORMATION

Example: VTPV-36-LED-U-30W-4-Z1-WSA

Model	Cage	Voltage	Lamping	Kelvin	Finish	Diffuser	Options
VTPV-24-LED		U 120 - 277	20w LED / 2460lm	2 3000K 4 4000K	T6 Pewter W2 Gloss White Z1 Satin Bronze Z3 Text Bronze	WSA White Smooth Acrylic	DIM LED dimming driver (0 - 10v) Dimming to 10% (Included)
VTPV-36-LED			30w LED / 3690lm	Optional 3 3500K	Optional (See Price List)		NIGHTLIGHT -NightLight circuit 50% light level UP
VTPV-48-LED			40w LED / 4920lm		W1 Yolk W2 Gloss White W3 Text White B2 Text Black T4 Shimmer Gray M13 Anod Silver W13 Pearl Beige		Battery Backup Options BB10 10 Watts (1170lm) for 90-Minute



28435 Industry Drive., Valencia, California 91355
West Coast Sales: 800-325-4448 / 661-257-0286 • fax 800-323-2346 / 661-257-0201
East Coast Sales: 866-350-0991 • fax 866-490-5754
www.lightwayind.com • sales@lightwayind.com

