

SDLH-LED

Construction:

- Steel housing and chassis
- White smooth acrylic lens
- Field adjustable aircraft cable

Light Source:

- LED
- Dimming (0 - 10v) to 10% **Included**

Notes:

- Mounts to standard junction box
- UL and CUL listed **DAMP** location
- Optional battery backup
- LED Components
 - Replaceable Module
 - CRI > 80
 - Universal 120/277 volt standard
 - 5-Year Warranty on LED Components

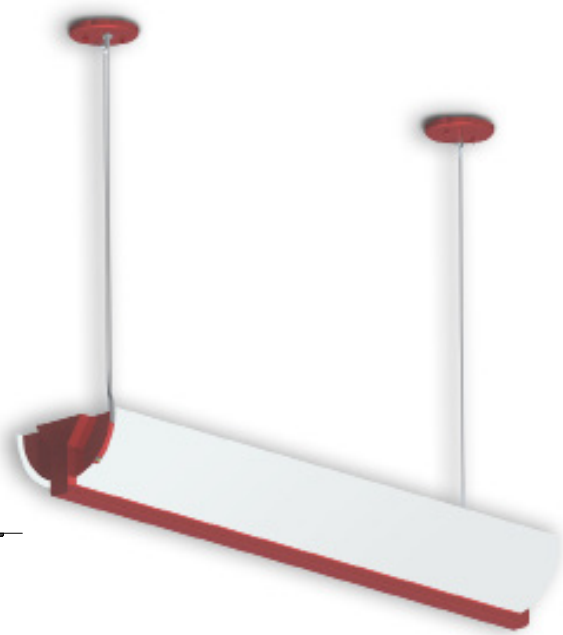
Type:	
Job Name:	

WALL

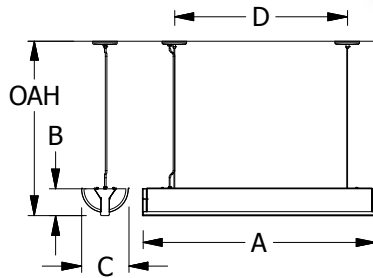
CEILING

PENDANT

OUTDOOR



	SDLH-24	SDLH-36	SDLH-48
A	24"	36"	48"
B	5 1/2"	5 1/2"	5 1/2"
C	9 3/4"	9 3/4"	9 3/4"
D	12"	24"	35"
OAH	4 - 24"	4 - 24"	4 - 24"



ORDERING INFORMATION

Example: **SDLH-24-LED-U-8W-4-B1-WSA-2AC-BSJ**

--	--	--	--	--	--	--	--

Model	Cage	Voltage	Lamping	Kelvin	Finish	Diffuser	Options
SDLH-24 -LED		U 120 - 277	8w LED / 1100lm 21w LED / 2450lm 42w LED / 4900lm	2 3000K 3 3500K 4 4000K	B1 Satin Black W2 Gloss White Z1 Satin Bronze Z3 Text Bronze Optional (See Price List)	WSA White Smooth Acrylic	DIM LED dimming driver (0 - 10v) Dimming to 10% (Included) (Suspension Systems) 2AC__ - Aircraft Cable w/ WSJ - White "SJ" Cord BSJ - Black "SJ" Cord GSJ - Gray "SJ" Cord Battery Backup Options BB10 Battery backup unit providing 10 Watts (1170lm) for 90-Minute
SDLH-36 -LED			32w LED / 3675lm 64w LED / 7350lm		W1 Yolk W3 Text White B2 Text Black T4 Shimmer Gray M13 Anod Silver T6 Pewter W13 Pearl Beige P2 Brushed Alum P9 Brushed Nickel M16 Antique Brass		
SDLH-48 -LED			16w LED / 2200lm 42w LED / 4900lm 84w LED / 9800lm				



28435 Industry Drive., Valencia, California 91355
 West Coast Sales: 800-325-4448 / 661-257-0286 • fax 800-323-2346 / 661-257-0201
 East Coast Sales: 866-350-0991 • fax 866-490-5754
 www.lightwayind.com • sales@lightwayind.com

