

### Construction:

- Housing and chassis is steel
- Diffuser is .10 extruded white acrylic
- Accent bars and rings are extruded aluminum

### Lamps:

- Lamps **INCLUDED** except on linear lamp fixtures

### Notes:

- Integral mounting plate; keyhole slots left and right
- Integral mounting plate; keyhole slots top and bottom (926 only)
- Top and bottom white acrylic lens – standard
- ADA compliant – all cage styles
- Not all material and accent styles are available – consult factory
- Dimming ballast may not be available with some lamp options
- Aluminum lens cover (ALC) eliminates up/down light
- UL and CUL listed WET location

Type:	
Job Name:	



MINW-16	MINW-20	MINW-26
Height - 16"	Height - 20"	Height - 26"
Width - 9"	Width - 9"	Width - 9"
Depth - 4"	Depth - 4"	Depth - 4"
MC - 8"	MC - 10"	MC - 13"

WALL

CEILING

PENDANT

OUTDOOR

## ORDERING INFORMATION

Example: MINW-920-B-A-2Q26-3-Z3-WSA

--	--	--	--	--	--	--	--

Model	Cage	Voltage	Lamping	Kelvin	Finish	Diffuser	Options
<b>MINW-916</b>	<b>A</b>	A 120v NPF	<b>2Q26</b> (2) Q26w	2 2700K	<b>B1</b> Satin Black	<b>WSA</b> White Smooth Acrylic  <b>Optional Cage Accents</b> (See Page 2)  <b>Material</b> <b>F</b> Filigree <b>P</b> Perforated Screen <b>M</b> Wire Mesh <b>W</b> Waffle Pattern  <b>Style</b> <b>SC</b> Screen Complete <b>CC</b> Center Complete <b>CH</b> Center Half <b>EC</b> Ends Complete <b>SF</b> Sides Full <b>CF</b> Center Full <b>OX</b> Custom	<b>(Dimming option - See Notes)</b> <b>DIM10</b> - Mark 10 Dimming Ballast <b>DIM7</b> - Mark 7 Dimming Ballast <b>01</b> 120v <b>02</b> 277v  <b>ALC</b> Aluminum Lens Cover- <i>See Notes</i>
	<b>B</b>	(Elec)	<b>1T32</b> (1) T32w	3 3500K	<b>Z1</b> Satin Bronze		
	<b>C</b>	U 277v HPF	<b>1T42</b> (1) T42w	4 4100K	<b>Z3</b> Text Bronze		
	<b>D</b>	(Elec)	<b>1B24</b> (1) 24w Biax		<b>Optional</b> (See Price List)		
<b>MINW-920</b>	<b>X</b>	UPS - Pro-gram Start	<b>2Q26</b> (2) Q26w		<b>W1</b> Yolk		
			<b>1T32</b> (1) T32w		<b>W2</b> Gloss White		
			<b>1T42</b> (1) T42w		<b>W3</b> Text White		
			<b>1B36</b> (1) 36w Biax		<b>B2</b> Text Black		
<b>MINW-926</b>			<b>2T32</b> (2) T32w		<b>T4</b> Shimmer Gray		
			<b>2T42</b> (2) T42w		<b>M13</b> Anod Silver		
			<b>1B55</b> (1) 55w Biax		<b>T6</b> Pewter		
			<b>2F17</b> (2) 17w T8 NL		<b>W13</b> Pearl Beige		
			<b>2F14</b> (2) 14w T5 NL		<b>P2</b> Brushed Alum		
		<b>2F24</b> (2) 24w T5H0 NL		<b>P9</b> Brushed Nickel			
					<b>M16</b> Antique Brass		

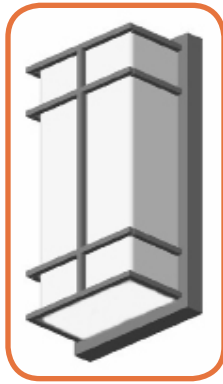


28435 Industry Drive., Valencia, California 91355  
 West Coast Sales: 800-325-4448 / 661-257-0286 • fax 800-323-2346 / 661-257-0201  
 East Coast Sales: 866-350-0991 • fax 866-490-5754  
 www.lightwayind.com • sales@lightwayind.com

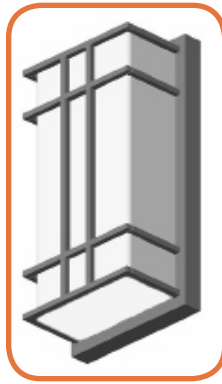


# MINW Series

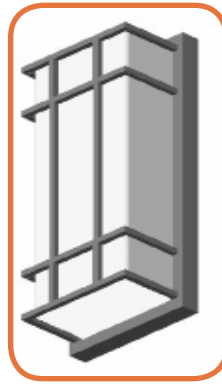
## Cage Styles and Accents



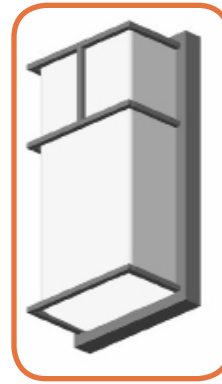
**MINW-A**



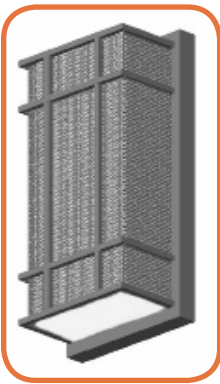
**MINW-B**



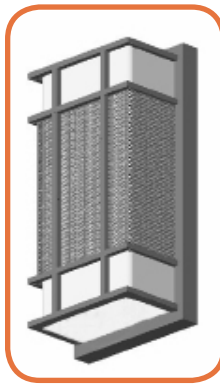
**MINW-C**



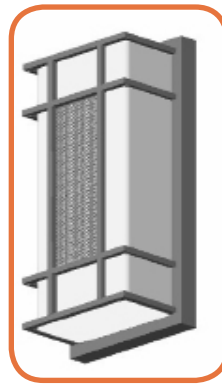
**MINW-D**



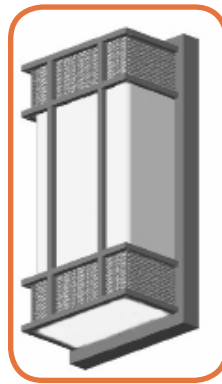
**SC**  
Screen  
Complete



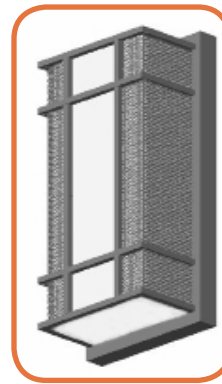
**CC**  
Center  
Complete



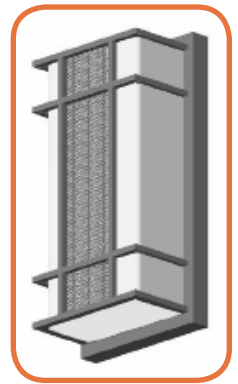
**CH**  
Center  
Half



**EC**  
Ends  
Complete



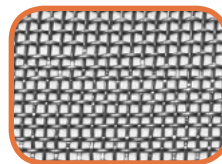
**SF**  
Sides  
Full



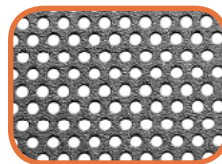
**CF**  
Center  
Full



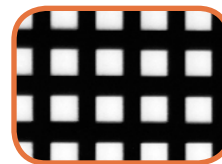
**Filigree**



**Mesh**



**Perforated**



**Waffle**



28435 Industry Drive., Valencia, California 91355  
 West Coast Sales: 800-325-4448 / 661-257-0286 • fax 800-323-2346 / 661-257-0201  
 East Coast Sales: 866-350-0991 • fax 866-490-5754  
[www.lightwayind.com](http://www.lightwayind.com) • [sales@lightwayind.com](mailto:sales@lightwayind.com)

