

Construction:

- Steel housing and chassis
- Diffuser is .10 extruded white acrylic
- Top and bottom white acrylic lens - standard

Lamps:

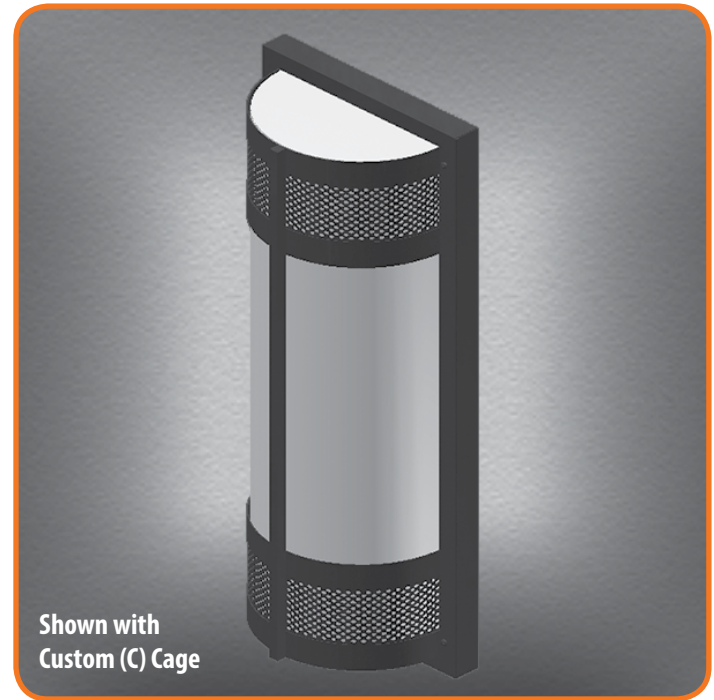
- Lamps **INCLUDED** except on linear lamp fixtures

Notes:

- Integral mounting plate; keyhole slots
- Optional Dimming ballast may be limited with some lamps
- Optional Photocell (21) increases fixture depth 1 1/2"
- Optional Photocell (21)- specify voltage 120v or 277v
- Optional Aluminum lens cover (ALC) eliminates up/down light
- Optional Battery backup may be limited or unavailable with some lamping
- ADA compliant
- UL and CUL listed **WET** location

Height - 26"
Width - 6 1/2"
Depth - 4"

Type:	
Job Name:	



Shown with Custom (C) Cage



WALL

CEILING

PENDANT

OUTDOOR

ORDERING INFORMATION

Example: MENW-626-C-U-1B55-3-Z3-WSA

--	--	--	--	--	--	--	--

Model	Cage	Voltage	Lamping	Kelvin	Finish	Diffuser	Options
MENW-626	A	A 120v NPF (Elec)	2Q26 (2) Q26w	2 2700K	B1 Satin Black	WSA White Smooth Acrylic Optional Cage Accents (See Page 2)	(Dimming option - See Notes) DIM10 - Mark 10 Dimming Ballast DIM7 - Mark 7 Dimming Ballast 01 120v 02 277v 21 Photocell - <i>Specify voltage</i> 01 120v 02 277v ALC Aluminum Lens Cover- <i>See Notes</i> (BB option - See Notes) <i>Increases fixture depth by 1 1/2"</i> BB - Battery Backup CBB - Cold Weather BB 01 120v 02 277v 06 650 Lumen (nominal) 12 1250 Lumen (nominal)
	B		1B55 (1) 55w Biax	3 3500K	Z1 Satin Bronze		
	C	U 277v HPF (Elec)	2F17 (2) 17w T8 NL	4 4100K	Z3 Text Bronze		
	D		2F24 (2) 24w T5H0 NL		Optional (See Price List)		
	E				W1 Yolk		
	F				W2 Gloss White		
	X				W3 Text White B2 Text Black T4 Shimmer Gray M13 Anod Silver T6 Pewter W13 Pearl Beige P2 Brushed Alum P9 Brushed Nickel M16 Antique Brass		



28435 Industry Drive., Valencia, California 91355
West Coast Sales: 800-325-4448 / 661-257-0286 • fax 800-323-2346 / 661-257-0201
East Coast Sales: 866-350-0991 • fax 866-490-5754
www.lightwayind.com • sales@lightwayind.com



MENW Series

Cage Styles and Accents



MENW-A



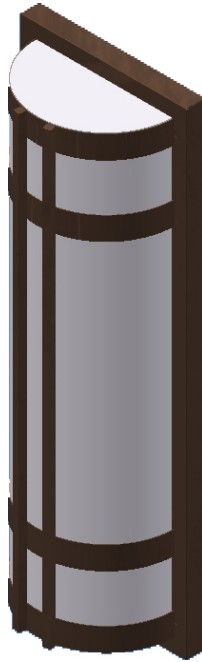
MENW-B



MENW-C



MENW-D



MENW-E



MENW-F



28435 Industry Drive., Valencia, California 91355
West Coast Sales: 800-325-4448 / 661-257-0286 • fax 800-323-2346 / 661-257-0201
East Coast Sales: 866-350-0991 • fax 866-490-5754
www.lightwayind.com • sales@lightwayind.com

