

MENW-616

Construction:

- Steel housing and chassis
- Diffuser is .10 extruded white acrylic
- Top and bottom white acrylic lens - standard

Lamps:

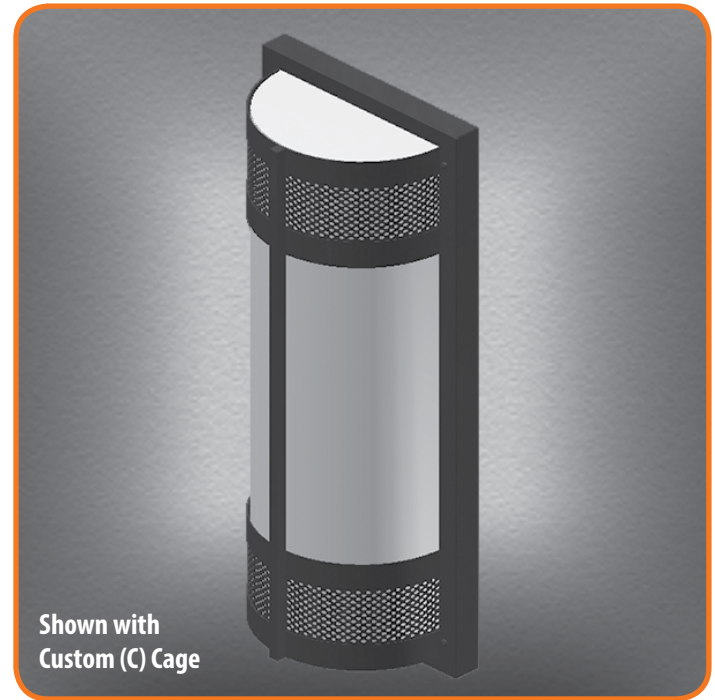
- Lamps **INCLUDED** except on linear lamp fixtures

Notes:

- Integral mounting plate; keyhole slots
- Optional Dimming ballast may be limited with some lamps
- Optional Photocell (21) increases fixture depth 1 1/2"
- Optional Photocell (21)- specify voltage 120v or 277v
- Optional Aluminum lens cover (ALC) eliminates up/down light
- Optional Battery backup may be limited or unavailable with some lamping
- ADA compliant
- UL and CUL listed **WET** location

Height - 16"
Width - 6 1/2"
Depth - 4"

Type:	
Job Name:	



WALL

CEILING

PENDANT

OUTDOOR

ORDERING INFORMATION

Example: MENW-616-C-U-1Q18-3-Z3-WSA

--	--	--	--	--	--	--	--

Model	Cage	Voltage	Lamping	Kelvin	Finish	Diffuser	Options
MENW-616	A	A 120v NPF (Elec)	2Q13 (2) Q13w	2 2700K	B1 Satin Black	WSA White Smooth Acrylic Optional Cage Accents (See Page 2)	(Dimming option - See Notes) DIM10 - Mark 10 Dimming Ballast DIM7 - Mark 7 Dimming Ballast 01 120v 02 277v 21 Photocell - <i>Specify voltage</i> 01 120v 02 277v ALC Aluminum Lens Cover- <i>See Notes</i> (BB option - See Notes) <i>Increases fixture depth by 1 1/2"</i> BB - Battery Backup CBB - Cold Weather BB 01 120v 02 277v 06 650 Lumen (nominal) 12 1250 Lumen (nominal)
	B		1Q18 (1) Q18w	3 3500K	Z1 Satin Bronze		
	C	U 277v HPF (Elec)	1Q26 (1) Q26w	4 4100K	Z3 Text Bronze		
	D				Optional (See Price List)		
	E				W1 Yolk		
	F				W2 Gloss White W3 Text White B2 Text Black T4 Shimmer Gray M13 Anod Silver T6 Pewter W13 Pearl Beige P2 Brushed Alum P9 Brushed Nickel M16 Antique Brass		
	X						



28435 Industry Drive., Valencia, California 91355
West Coast Sales: 800-325-4448 / 661-257-0286 • fax 800-323-2346 / 661-257-0201
East Coast Sales: 866-350-0991 • fax 866-490-5754
www.lightwayind.com • sales@lightwayind.com



MENW Series

Cage Styles and Accents



MENW-A



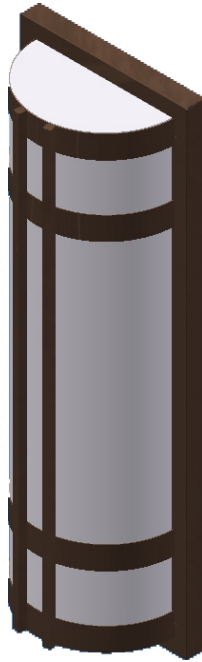
MENW-B



MENW-C



MENW-D



MENW-E



MENW-F



28435 Industry Drive., Valencia, California 91355
West Coast Sales: 800-325-4448 / 661-257-0286 • fax 800-323-2346 / 661-257-0201
East Coast Sales: 866-350-0991 • fax 866-490-5754
www.lightwayind.com • sales@lightwayind.com

