

MANW-1138 /1150

Construction:

- Steel housing and chassis
- Diffuser is .10 extruded white acrylic
- Top and bottom white acrylic lens - standard

Lamps:

- Lamps **INCLUDED** except on linear lamp fixtures

Notes:

- Integral mounting plate; keyhole slots left and right
- Optional Dimming ballast may be limited with some lamps
- Optional Photocell (21) increases fixture depth 1 ½"
- Optional Photocell (21)- specify voltage 120v or 277v
- Optional Aluminum lens cover (ALC) eliminates up/down light
- Optional Battery backup may be limited or unavailable with some lamping
- UL and CUL listed **WET** location

Type:	
Job Name:	



Shown with (E) cage



Height - 38" or 50"
 Width - 11.25"
 Depth - 6"

WALL

CEILING

PENDANT

OUTDOOR

ORDERING INFORMATION

Example: MANW-1138-B-A-3T32-3-Z1-WSA

--	--	--	--	--	--	--	--

Model	Cage	Voltage	Lamping	Kelvin	Finish	Diffuser	Options
MANW-1138	A	A 120v NPF (Elec)	3T32 (3) T32w	2 2700K	B1 Satin Black	WSA White Smooth Acrylic Optional Cage Accents (See Page 2)	(Dimming option - See Notes) DIM10 - Mark 10 Dimming Ballast DIM7 - Mark 7 Dimming Ballast 01 120v 02 277v 21 Photocell - <i>Specify voltage</i> 01 120v 02 277v ALC Aluminum Lens Cover- <i>See Notes</i> (BB option -See Notes) BB - Battery Backup CBB - Cold Weather BB 01 120v 02 277v 05 500 Lumen (nominal) 06 650 Lumen (nominal) 12 1250 Lumen (nominal) 13 1300 Lumen (nominal) 14 1400 Lumen (nominal)
	B		2B40 (2) 40w Biax	3 3500K	Z1 Satin Bronze		
	D	U 277v HPF (Elec)	2F25 (2) 25w T8 NL	4 4100K	Z3 Text Bronze		
	C		4F25 (4) 25w T8 NL		Optional (See Price List)		
	E		2F39 (2) 39w T5HO NL				
	F						
MANW-1150	X		3T32 (3) T32w		W1 Yolk		
			3T42 (3) 42w		W2 Gloss White		
			4F32 (4) 32w T8 NL		W3 Text White		
			2F54 (2) 54w T5HO NL		B2 Text Black T4 Shimmer Gray M13 Anod Silver T6 Pewter W13 Pearl Beige P2 Brushed Alum P9 Brushed Nickel M16 Antique Brass		

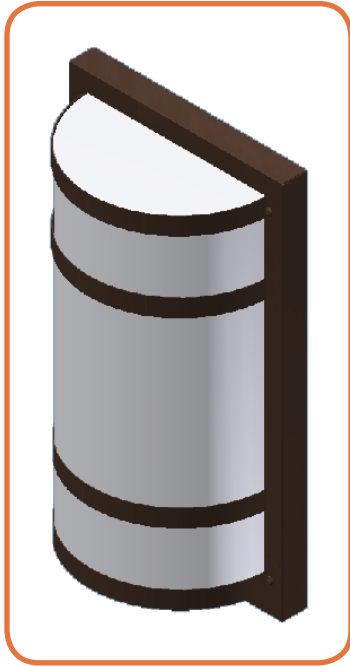


28435 Industry Drive., Valencia, California 91355
 West Coast Sales: 800-325-4448 /661-257-0286 • fax 800-323-2346 /661-257-0201
 East Coast Sales: 866-350-0991 • fax 866-490-5754
 www.lightwayind.com • sales@lightwayind.com

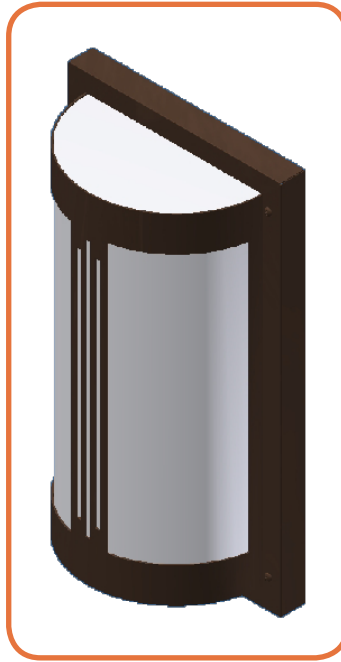


MANW Series

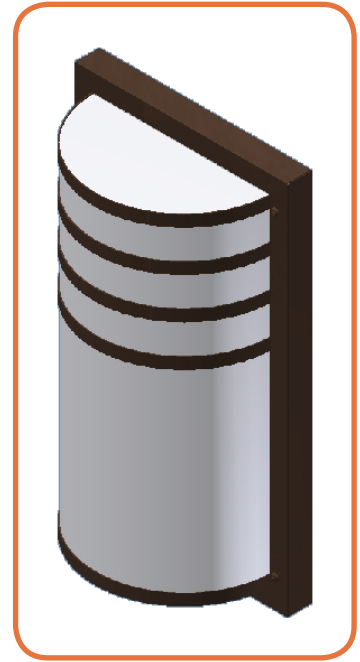
Cage Styles and Accents



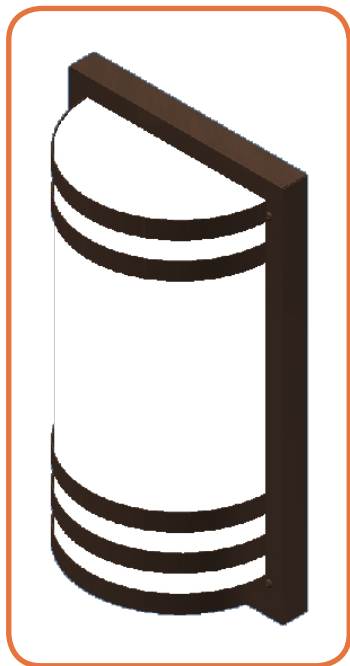
MANW-A



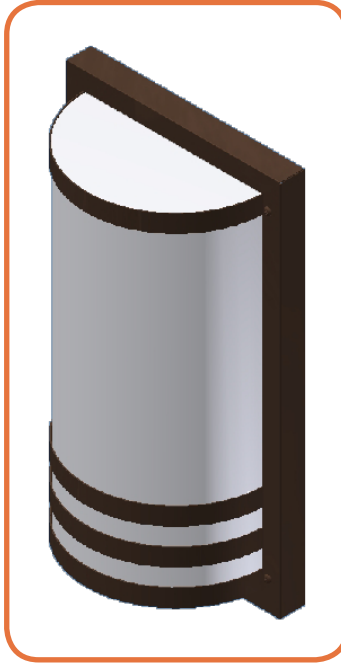
MANW-B



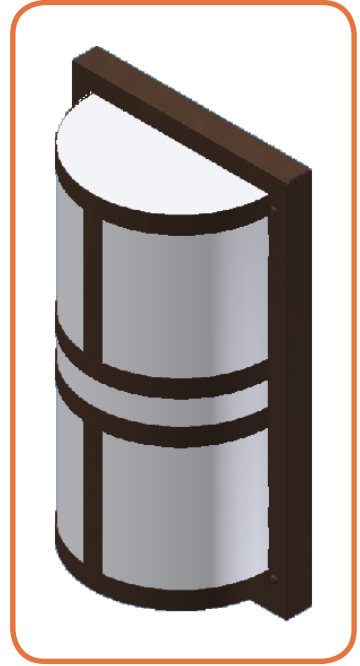
MANW-C



MANW-D



MANW-E



MANW-F



28435 Industry Drive., Valencia, California 91355
West Coast Sales: 800-325-4448 / 661-257-0286 • fax 800-323-2346 / 661-257-0201
East Coast Sales: 866-350-0991 • fax 866-490-5754
www.lightwayind.com • sales@lightwayind.com

