

# MANW-1110

## Construction:

- Steel housing and chassis
- Diffuser is .10 extruded white acrylic
- Top and bottom white acrylic lens - standard

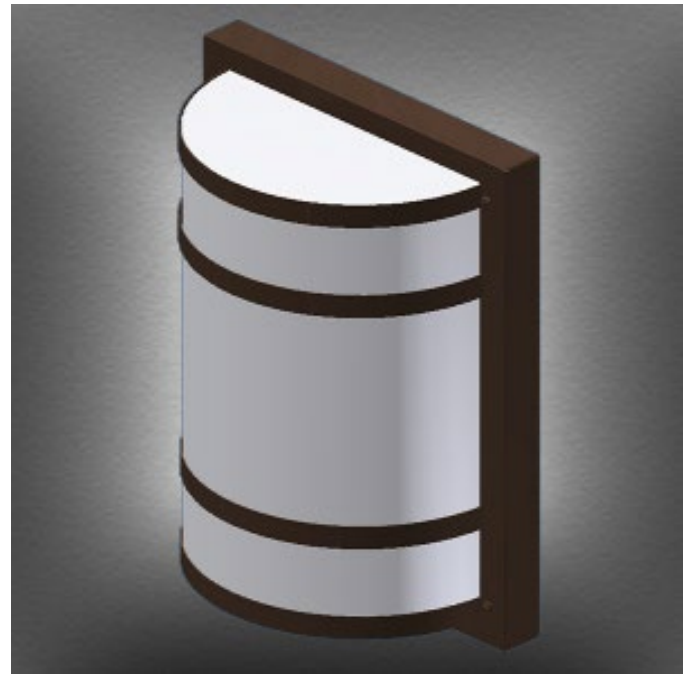
## Lamps:

- Lamps **INCLUDED** except on linear lamp fixtures

## Notes:

- Integral mounting plate; keyhole slots left and right
- Optional Dimming ballast may be limited with some lamps
- Optional Photocell (21) increases fixture depth 1 ½"
- Optional Photocell (21)- specify voltage 120v or 277v
- Optional Aluminum lens cover (ALC) eliminates up/down light
- UL and CUL listed **WET** location

Type:	
Job Name:	



Shown with (A) cage

Height - 10.5"  
Width - 11.25"  
Depth - 6"



WALL

CEILING

PENDANT

OUTDOOR

## ORDERING INFORMATION

Example: MANW-1110-A-A-1Q13-3-Z1-WSA

--	--	--	--	--	--	--	--

Model	Cage	Voltage	Lamping	Kelvin	Finish	Diffuser	Options
<b>MANW-1110</b>	<b>A</b>	A 120v NPF	<b>1Q13</b> (1) Q13w	<b>2</b> 2700K	<b>B1</b> Satin Black	<b>WSA</b> White Smooth Acrylic  <b>Optional Cage Accents</b> (See Page 2)	<b>(Dimming option - See Notes)</b> <b>DIM10</b> - Mark 10 Dimming Ballast <b>DIM7</b> - Mark 7 Dimming Ballast <b>01</b> 120v <b>02</b> 277v  <b>21</b> Photocell - <i>Specify voltage</i> <b>01</b> 120v <b>02</b> 277v  <b>ALC</b> Aluminum Lens Cover- <i>See Notes</i>
	<b>B</b>	(Elec)	<b>1Q18</b> (1) Q18w	<b>3</b> 3500K	<b>Z1</b> Satin Bronze		
	<b>D</b>	U 277v HPF	<b>1Q26</b> (1) Q26w	<b>4</b> 4100K	<b>Z3</b> Text Bronze		
	<b>C</b>	(Elec)			<b>Optional</b> (See Price List)		
	<b>E</b>				<b>W1</b> Yolk		
	<b>F</b>				<b>W2</b> Gloss White		
	<b>X</b>				<b>W3</b> Text White		
					<b>B2</b> Text Black		
					<b>T4</b> Shimmer Gray		
					<b>M13</b> Anod Silver		
				<b>T6</b> Pewter			
				<b>W13</b> Pearl Beige			
				<b>P2</b> Brushed Alum			
				<b>P9</b> Brushed Nickel			
				<b>M16</b> Antique Brass			

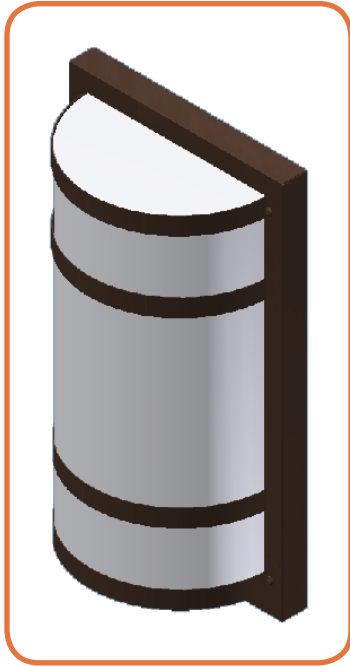


28435 Industry Drive., Valencia, California 91355  
West Coast Sales: 800-325-4448 /661-257-0286 • fax 800-323-2346 /661-257-0201  
East Coast Sales: 866-350-0991 • fax 866-490-5754  
www.lightwayind.com • sales@lightwayind.com

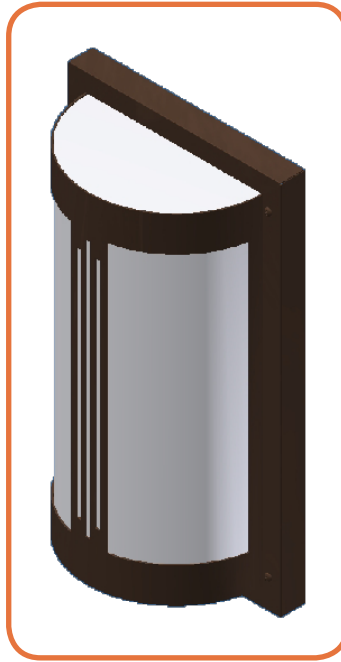


# MANW Series

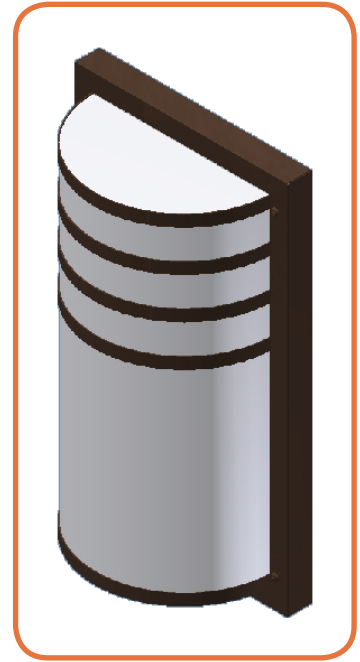
## Cage Styles and Accents



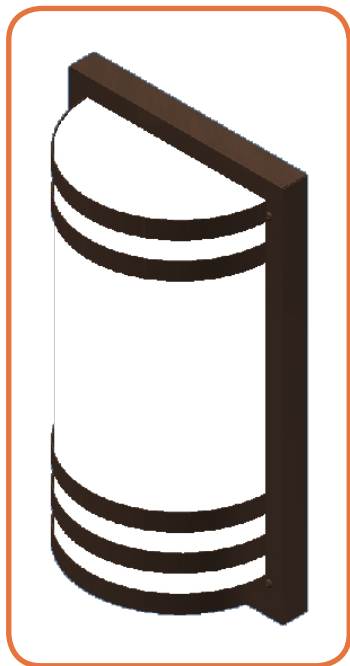
**MANW-A**



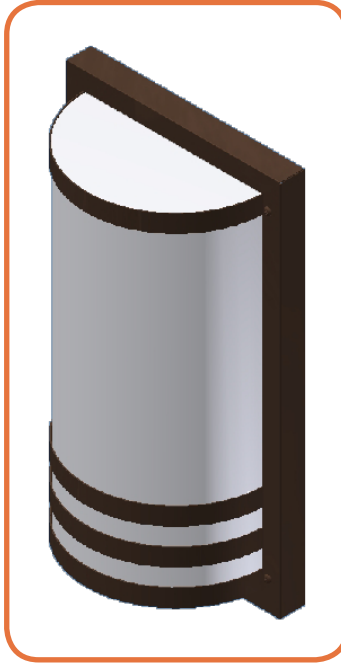
**MANW-B**



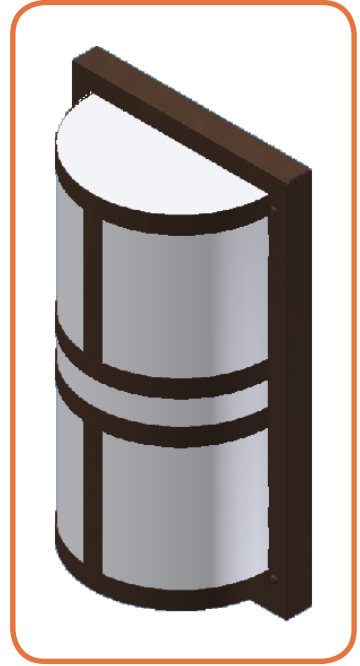
**MANW-C**



**MANW-D**



**MANW-E**



**MANW-F**



28435 Industry Drive., Valencia, California 91355  
West Coast Sales: 800-325-4448 / 661-257-0286 • fax 800-323-2346 / 661-257-0201  
East Coast Sales: 866-350-0991 • fax 866-490-5754  
[www.lightwayind.com](http://www.lightwayind.com) • [sales@lightwayind.com](mailto:sales@lightwayind.com)

