

PROTECT YOUR WARRANTY



**IMPORTANT
PLEASE READ**



DO NOT SKIP THESE STEPS

Proper Adjustment of the Cozy Roadie Quick Release Mechanism

Paragraph 1. There are adjustment rings on both upper and lower Quick Releases. The U-Shaped Ejection Handle is used to eject the seat plate and wheelbase from the gas lift cylinder. (When properly adjusted, the handle can be operated in either direction, up or down.)
(See Illustration #1 & 2 p3)

Paragraph 2. Please ensure that the gas lift piston, seats properly into the Seat Plate. Properly seated, the parts are “press-fit” together and do not come apart. (Check by lifting seat plate to make sure the gas cylinder stays in place.) **IF NOT...** By turning the adjustment ring on the upper quick release to the left one or two turns, you will lower the Thrust Plate on the Quick Release to allow the piston to seat properly into the Seat Plate assembly. *Once again*, piston should stay firmly in Seat Plate. Perform the same procedure for the lower Quick Release to ensure the lower gas lift cylinder stays in the Wheelbase. Important, if the upper quick release adjustment ring is set too high, the piston will not seat into the Seat Plate properly, leaving you with a wobbly or unstable chair.

**IT IS THE USERS RESPONSIBILITY TO ENSURE THE CHAIR IS COMPLETELY
PRESS-FIT TOGETHER BEFORE USE!**

Paragraph 3. Another very important note: **Make sure that the upper Ejection Handle is clear of the “Seat Plate Tilt Tension Knob”, as the tension knob can interfere with proper assembly and damage the Quick Release voiding your warranty.** (See Illustration #3 below)

Paragraph 4. Proper adjustment will allow you to put the chair together and be able to lift the chair without the gas lift cylinder coming out of the Seat Plate or the Wheelbase. (Ref: Paragraph 2) Once you have established that the chair stays together, you should adjust the Quick Release so that the Thrust Washer is snugged “up” against the Seat Plate collar (See Illustration #4 page p3). Repeat the same procedure for the wheelbase. Performed correctly, the Ejection Handle will now be fairly rigid at a 90 degree angle to the gas lift cylinder. *The Ejection Handle, is now properly positioned for disassembly, when you are ready take your chair apart.*

Paragraph 5. Please be careful not to back off the upper Quick Release adjustment ring in the “down or away” position from the Seat Plate Collar (See Illustration #3 p3). The same is true for the Wheelbase Quick Release. Making this adjustment too far in the Up direction could lead to damage of the Quick Release “Thrust Plate”. Note: *When this happens the release handle will “appear” to be tight and ready to push the Seat Plate off of the piston. But what really has happened, is that you have tightened or adjusted the Quick Release against itself, defeating the ability of the mechanism to function as designed. Forcing the Quick Release in this position will damage the Thrust Plate, or worse, destroy the Quick Release entirely.*

Paragraph 6. A way to visually check this is to inspect the relationship of the upper “Chrome Thrust Plate to the “Collar of the chair Seat-plate” There should be no gap between the “Thrust Plate” of the Quick Release and the Collar of the Seat Plate (See Illustration #4 p3). Another indication that you are in the proper adjustment range, is the outer Adjustment Ring should be close to flush with the “inner race” that is attached to the piston and lower cylinder assembly. (When visually inspecting the upper Quick Release, It's okay if the adjustment ring is slightly below the “inner race” of the Quick Release).

*Inner Race is the inner Threaded Ring attached to the gas cylinder, that the Quick Release threads onto, to adjust higher and lower on the gas cylinder.

PROTECT YOUR WARRANTY



**IMPORTANT
PLEASE READ**



DO NOT SKIP THESE STEPS

Proper Disassembly of the Cozy Roadie

Paragraph 7. Ready to take your chair apart?

The easiest way to start is by standing behind the chair, gently pull the seatback towards you as you lift the seatback release lever. (This will ease tension on the seatback release mechanism.) Fold the seatback forward, towards to seat. (Illustration #6 p4)

Paragraph 8. Next move to the Wheelbase Quick Release. Make sure that the adjustment ring is adjusted such that the Ejection Handle is rigid and 90 degrees with respect to the lower cylinder assembly. Use your foot to step down on the Ejection Handle. If you have done this properly, the cylinder will lift out of the Wheelbase allowing you to remove it from the cylinder. (See page 1, Paragraph 4, Sentence 2 to confirm you have done this properly.) (Illustration #7 p4)

Paragraph 9. Next turn the chair on its side, remove the Wheelbase. (Illustration #8 p4)

Paragraph 10. Next turn the chair so that the Seat Plate and gas cylinder are in the up position. Facing you. (Illustration #9 p4)

Paragraph 11. Make sure that the adjustment ring is adjusted such that the Ejection Handle is rigid and 90 degrees with respect to the upper piston assembly. (Illustration #4 p3) (As explained above, there should be no gap between the “Thrust Plate” of the Quick Release and the Collar of the bottom Seat Plate). Now step down on the Quick Release to Eject the piston from the Seat Plate assembly. (See Illustration #9 p4)

Paragraph 12. Remove the Seat Plate by evenly turning the thumb screws, two at a time, counterclockwise, alternating between the two, to keep the rubber washers in place on the thumb screws and Seat Plate. Do this if you’re packing your Cozy Roadie in our Transit Case.

Paragraph 13. If you are a Cozy Roadie “Chair Only” customer, you can leave the Seat Plate on the chair and it will be ready for your next use.

Following these instructions explicitly will ensure safe operation of your Cozy Roadie.

You, the “operator” of the Cozy Roadie assumes all responsibility for proper assembly and operation of the Cozy Roadie crew chair.

Stay tuned. Videos will be posted to our website that will visually explain the operation of the Seatback, Quick Release and proper repacking of the Cozy Roadie into its case.

PROTECT YOUR WARRANTY

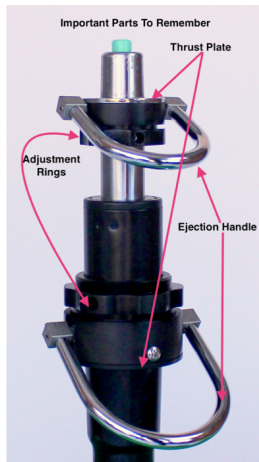


**IMPORTANT
PLEASE READ**

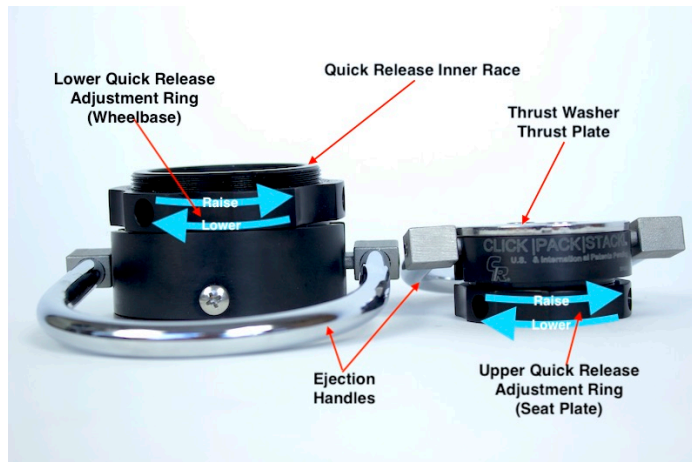


DO NOT SKIP THESE STEPS

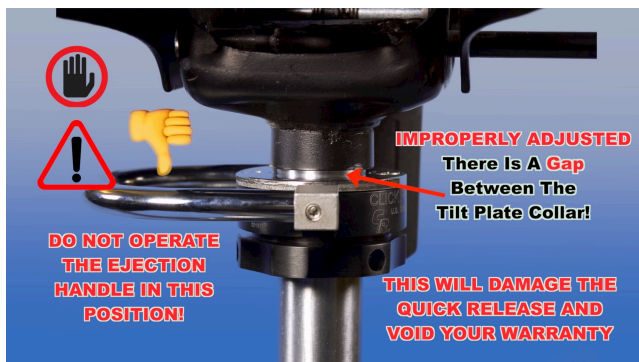
Illustrations



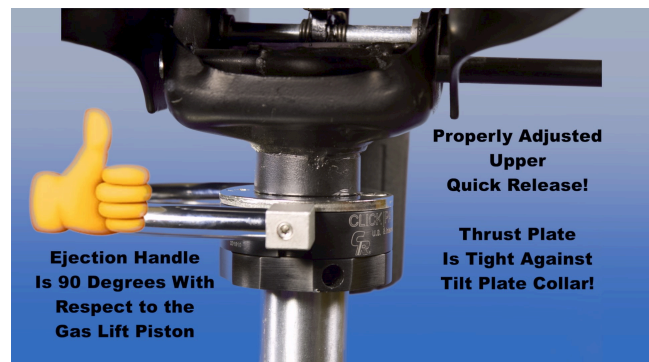
(Illustration #1)
Handles Shown In Down Position
or relaxed position.



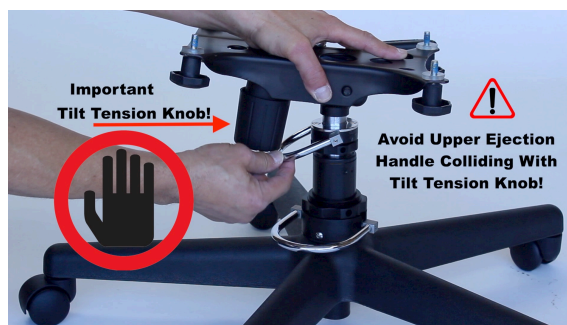
(Illustration #2)
Parts To Remember:
Adjustment Ring, Thrust Plate, Ejection Handle.



(Illustration #3)
Improperly Adjusted Quick Release!



(Illustration #4)
Properly Adjusted Quick Release.



(Illustration #5)
Be Sure That The Ejection Handle Is Clear Of The Tilt Tension Knob.

PROTECT YOUR WARRANTY



**IMPORTANT
PLEASE READ**



DO NOT SKIP THESE STEPS



Illustration #6 Lift Seatback Lever.



Illustration #7 Step On Eject Handle.



Illustration #8 Remove Wheelbase.



Illustration #9 Step Down On Eject Handle.



**Illustration #10 Remove Gas Lift From
Seat Plate.**



**Illustration #11 Systematically Remove Thumb
Screws Two At A Time, Alternating Evenly
Until All 4 Screws Are Free.**