

T6.1 Moulded Carpet FITTING INSTRUCTIONS

Please read these instructions carefully to give an idea of the sequence of events. When removing clips screws and bolts etc. Please remember to put them in a plastic bag label and store them safely for re-use.
Take some pictures to remind you how things fitted

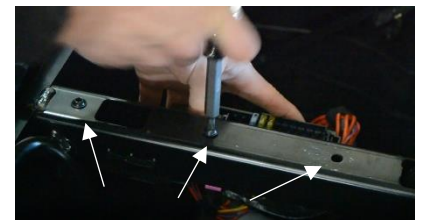
FRONT SEAT REMOVAL



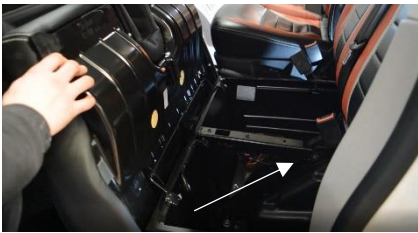
The first part of the removal process is to remove the front seats.



Firstly, tilt the passenger bench seat forward – if you don't have a bench you will have to work underneath the seat.



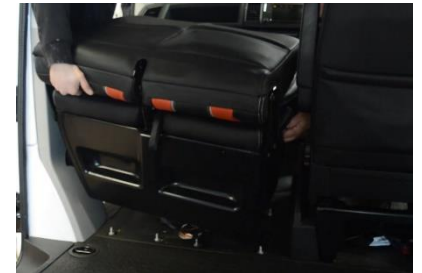
Undo the bolts holding the electric wires to the seat box with a T20 Torx – place the box on the floor.



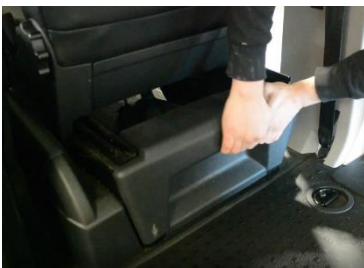
Pull forwards and remove the plastic cover then remove the electric connections. with a T20 Torx – place the box on the floor.



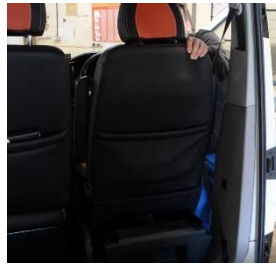
Undo the 8, 17mm bolts from the base of the bench seat – 4, 17mm bolts if removing a normal seat.



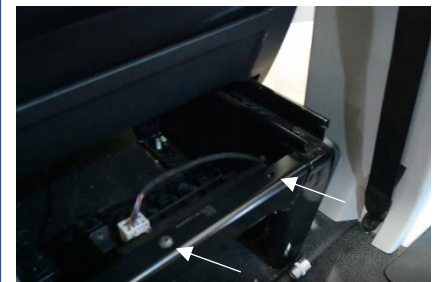
You can now remove the passenger side seat.



Now moving onto the driver's seat, firstly remove the plastic cover at the back of the seat.



Slide the driver's seat forward to increase the amount of space to work in under the



Undo the bolts holding the electric wires to the seat box again with a with a T20 Torx – place the box on the floor.



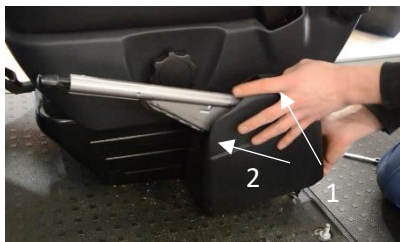
Remove the orange connector by pushing a flat head screwdriver down and into the tab on the back also remove any other wires that maybe connected here.



Next undo the 4, 17mm bolts from the base of the seat.



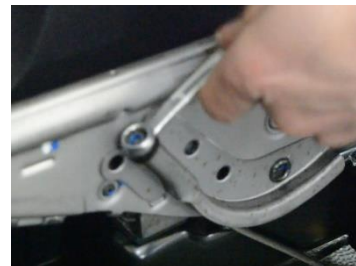
Now to remove the handbrake plastics. Using a flathead screwdriver simultaneously press in the tab under the lever handle whilst moving the plastic surround forward.



Lift the second remaining section up from the back and out over the handle. (This may require a slight wiggle or two)



The handbrake switch is now accessible. With your thumb lift the catch and pull to remove the wire.



Undo the 10mm nut for the handbrake cable and remove



Lay the seat back to gain access to the underneath – be careful not to snag any remaining wires.



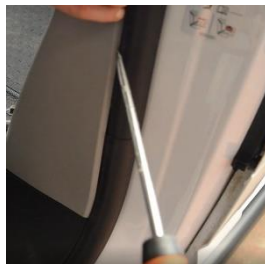
Unplug and remove any remaining wires that maybe attached to the bottom of the seat – the seat can now be removed from the van.

REMOVAL OF 'B' POSTS & STEPS

Firstly, you will need to remove the lower seat belt mounting bolt on the driver's side using a 10mm spline drive.



Next carefully release the panel using a flat head screwdriver – start at the bottom and work your way up.



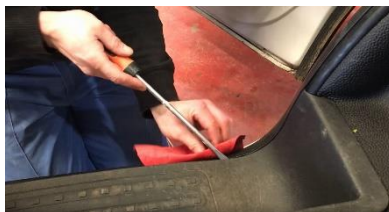
Once the panel is unclipped on both sides the last clipped to be released is at the top, you should now be able to wiggle the panel loose.



Now Repeat the last three steps on the passenger's side – if you have an electric switch this will need to be removed with a flat head screwdriver.



Moving down and onto the step, use a flat head screwdriver push under the step and lift up to release the clip – a good tip here is to use a thick piece cloth so when lifting you don't damage your paint.



Once clips 1 and 2 are released you should then be able to pull the step upwards, releasing the 3rd 4th and 5th clips.

DASH REMOVAL



Firstly, start by removing the air vent cover on the driver's side of the dash using a flat head screwdriver.



Next unclip the side panel below the air vent.



Now you will need to remove the light switch, turn the switch so it is on the '0'.



Push the centre of the switch in and turn one click to the right, this should now release the whole unit so it can be pulled free from the dash.



Pull the cable from the back of the switch and remove the screw in the base of the housing.



The driver's side lower dash can now be unclipped and pulled forward, remove any attached wires, and remove from the van.



Now you have access to the under-dash tray, remove this and pull the LED light free.



The next step is to remove the air vent cover on the passenger side.



Again, unclip the side panel below but **do not remove** as the air bag switch will need to be left connected.



We can now start to remove the glovebox- open the glovebox and then using a flat head screwdriver prize the top panel off.



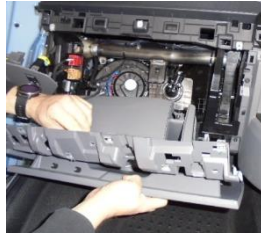
You now have access to the three Torx screws – close the glovebox and remove the screws.



Next undo the Torx screw under the glovebox, this will release the under tray, unhook the light and remove from the van.



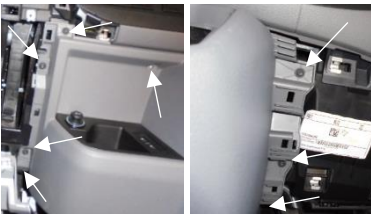
Open the glovebox again and pull forward to release the top from its clips.



With the glovebox released disconnected any wires and remove from the van.



Now the glovebox has been removed we can focus on the gear lever gaiter surround. To release the cover, unclip the two clips at the base with a flat head screwdriver and lift the gaiter to the top of the stalk, do not remove.



Undo and remove all the Torx screws from both sides of the gear lever.



You should now have access to behind this fascia, run your hand along the back and remove any wires connecting this part. Feed up and over the gear lever and remove from the van.

CARPET FITTING



The carpet can now be placed into the van. Locate the tunnel and push all the way forward.



Pay special attention to the passenger side and making sure that the pipe sits within the pre-cut hole.



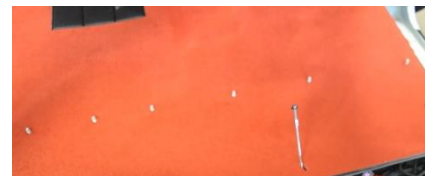
On the driver's side wrap the carpet around the pedal assembly also making sure the flap tucks behind the accelerator pedal mount.



Next you will need to trim around the bonnet release lever, make a cut in line with the back of the lever to form a flap and then push this under the lever.



Now that the front of the carpet is fitted, we can work on the cutting through the seat bolts – make sure the carpet is square and then cut a small incision into the carpet using a knife slowly making bigger if needed.



When the hole is big enough push the bolt through –follow this through for all the seat mounting bolts in the van along with the handbrake cable.



Next cut the holes for the wire looms to push through with a knife – the trick here is to cut an “X” into the carpet so when the wires go through the carpet fold back into place.



Repeat the process on the other side too.



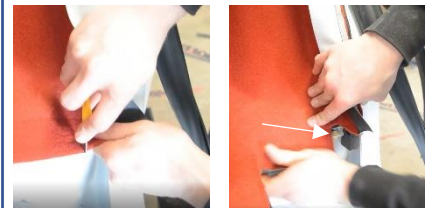
Now the carpet is fixed into place with the bolts, we can start to trim the steps – square off the back edge of the carpet using a knife.



Trim the small indent in the centre of the step.

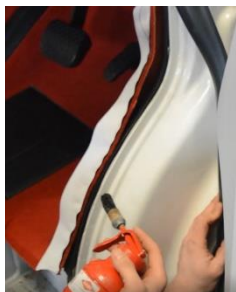


Now working on the edge at the front of the van – cut along the carpet from back to the front, this will allow the carpet to fold down easier.

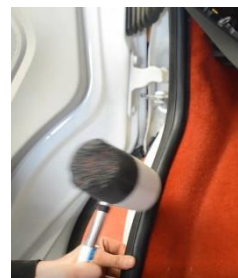


Make an incision level with the inside edge of the step mounting, cut to the back of the mount and out towards the side of the van cutting off a small amount of the flap in the process.

Using a glue brush, glue the carpet flap along with the sill area.



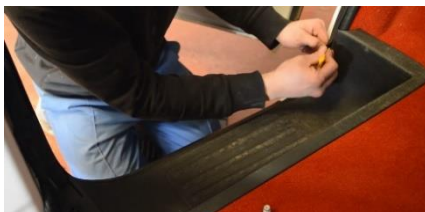
With the flap and sill glued, start to turn the flap over the edge – making sure that the carpet is pushed back level with the edge of the sill to create the best finish. You can also use a flathead screwdriver to help force the carpet edge into the correct place.



Once the flap has been turned the rubber excluder can be refitted - using a rubber mallet can make this a lot easier.



Next refit the step – once the step is in place push down so the clips click back into place. Push all around the edges to make sure everything has clicked down and into place.



The last part will be for you to pull any of the rubber excluding that is under the step out from underneath it, you can use a blunt object along with your fingers to prize this out.



Now repeat the last eleven steps on the other side - Once this has been done the carpet has been fitted!!

T6 INTERIOR REFITTING



The first section to go back into the van is the gear lever fascia. Slot this over the gear lever and its surround and then re-connect the wires at the back.



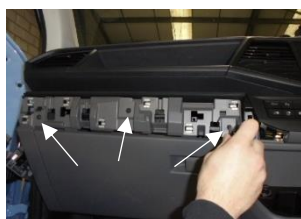
The Torx screws can now be refitted into the fascia.



Push the gear lever gaiter back down and into place.



Reconnect any wires that were disconnected from the glovebox and then push back up to clip into place.



Screw the three T20 screws back into the place – we found it easier to use an electric drill rather than a screwdriver.



Press the dash top fascia back into place.



Re-fit the light on the undertray and replace the Torx screws on the passenger's side.



Now with this done you can press the lower side fascia back into place.



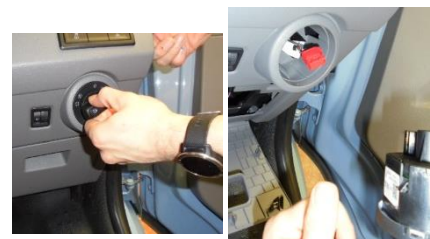
Refit the upper side air vent panel.



Move onto the driver's side and refit the under-dash tray and the LED footwell light.



You can now attach wiring to the upper dash fascia and re-clip this back in.



Then reattach the light cluster and push back into place. Twist the switch back to '0' and this should then click back into place.



Now refit the panel below the air vent.



Lastly push the air vent fascia back into place.



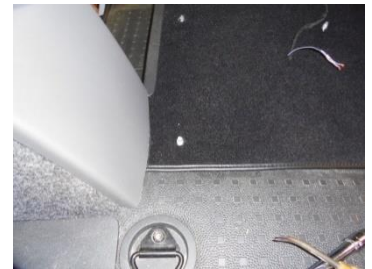
The dash has now been refitted!!



Now move back onto the B POST, first reconnect any wires on the back.



Slot the top of the B POST back in and work down toward the bottom pushing the clips back into place.



The bottom of the B POST may take a little more effort just because of the small amount of carpet residing underneath.



Once the B POST is clipped back onto the van you can pull out any rubber extrusion that maybe sitting underneath.

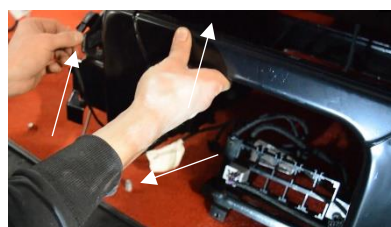
Refit the seat belt mount with the 10mm spline drive.



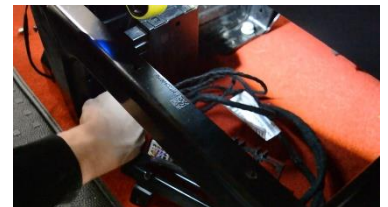
Now this side is completed refitted work on the other side with the last five steps.



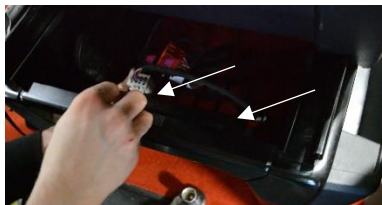
With the B POSTS finished we can now start to move the seats back into the van. Start with the driver's side first.



Reconnect the handbrake lever wire and place the seats down and over the rear seat bolts ready to be bolted.



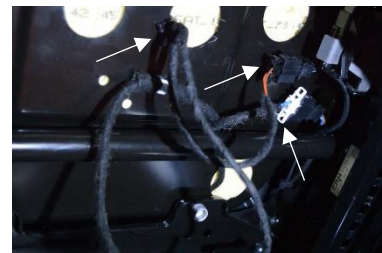
With the seat back in place refit the 17mm bolts to fix the seat back in the van.



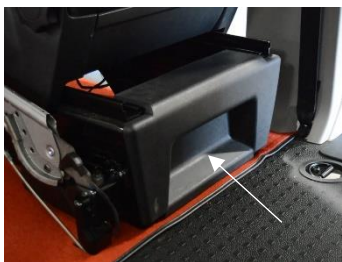
Now with the seat fixed in place reattached the wire loom to the frame with T20 Torx.



Refit any wires which you had removed from the side electrical box



Now reconnect any wires which were attached to the bottom of the seat.



Refit the seat plastic surround



Now moving onto the handbrake, thread the wire back through the tube.



Refit the 10mm bolt onto the handbrake cable and tighten, making sure the handbrake pulls up tight to three clicks – the bolt may need to be adjusted either way. Please note that this is crucial you get this right and that Newton Commercial Ltd are not liable for any damages that may be caused in getting this wrong.



Refit the handbrake surrounds starting with the back piece.



Now slide the front section on making sure the clips slots back into place.



Moving onto the passenger side, place the seat back into the van and onto its bolt pins.



Reattached the wire loom to the frame with the T20 Torx.



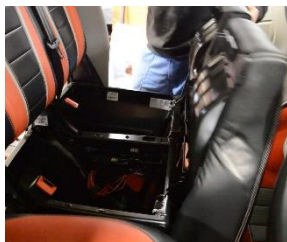
Reattached the second wire loom to the frame with the T20 Torx.



Refit the 8, 17mm bolts to the base of the bench seat – or the 4, 17mm bolts if you have a normal seat.



Reattached the plastic surround over the second wire loom.



Push the seat base back down and in.
You have now finished fitting your carpet!!