

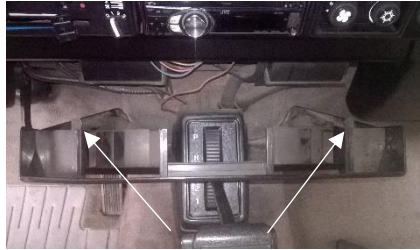
## NEWTON COMMERCIAL T25 Moulded Carpet FITTING INSTRUCTIONS

Please read these instructions carefully to give an idea of the sequence of events. When removing clips screws and bolts etc.  
Please remember to put them in a plastic bag label and store them safely for re-use.  
Take plenty of pictures to remind you how things fitted

### OLD CARPET REMOVAL



The first part of the removal process is to remove the fascia panel.



Two clips, one either side need to be pressed down with a flat head screw.



The next item to remove is the plastic studs that hold the carpet fixings on the bulkhead. A flat head screwdriver can be used.



The throttle linkage can now be removed by pulling the pedal upwards.



You are now ready to pull out your old carpet.

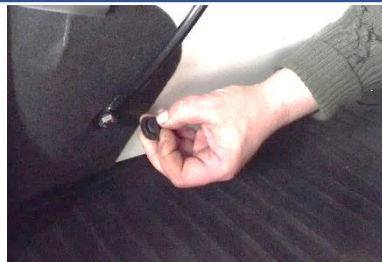


Now the carpet has been removed you now have access to the underfelt, this can now simply just be pulled out.  
(Please see underfelt fitting notes first)

### OLD WALK-THROUGH AND SEAT BOX CARPET REMOVAL



Remove the five screws from the walkthrough with a Philips cross head screw driver. Once removed you can then lift the carpet over the handbrake.



Removes the seat belt anchorage plastic to gain access to the bolt.



Remove the bolt for the seat belt, this allows you to remove any original seat box carpet.

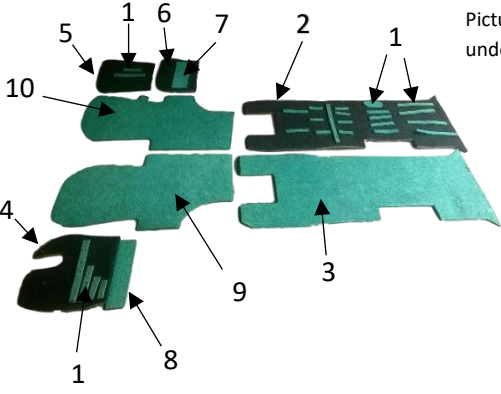
YOUR OLD CARPET IS NOW FULLY REMOVED AND IS READY FOR THE UNDERFELT TO BE FITTED.

PLEASE NOTE - TO FIT YOUR CARPET YOU WILL IDEALLY NEED A CAN OF SPRAY GLUE AND A SMALL TUBE OF CONTACT ADHESIVE.

**UNDERFELT FITTING**

Take this opportunity to make any repairs to your floor as necessary. Please make sure that floorplan is dry before fitting your new underfelt.

If your van has an original underfelt which is in good condition the new underfelt will not need to be fitted. However the kit will need to be used if your underfelt is damaged or if your vehicle doesn't have an underfelt usually found with vans that have rubber mats.



Picture shows and identifies all components of your new underfelt kit.

- 1) 18 floor pan fillers.
- 2) Brown backed felt for walkthrough/tunnel.
- 3) Green felt for walkthrough/tunnel.
- 4) Front left-hand floor pad
- 5) Front right-hand floor pad (use for LHD only)
- 6) Front right-hand floor pad
- 7) Small Rectangle green felt
- 8) Large Rectangle green felt
- 9) Front left-hand foot well felt
- 10) Front right-hand foot well felt

Please note -.Number three will not need to be used if your van is a diesel or has a plastic moulded walkthrough.



The first items to be glued onto the van would be part one. The floor pan fillers are all cut to size, so you just need to find the right one for the right pressing.

These cut outs will need to be made because the results are much better done with the van present. These will however still be marked to help with the cutting. A pair of scissors will be best.

Parts two and three would be next to be glued down. Dry fit the felt to make sure everything fits. It is best to glue from the back of the walkthrough and then towards the front.

Parts four and six will slot into place on their respected sides. These will also be glued into place using a heavy-duty spray adhesive.

If fitting into an LHD please fit part number five on top of part number six.

The small and large rectangle pieces seven and eight can now be fitted below four and six.

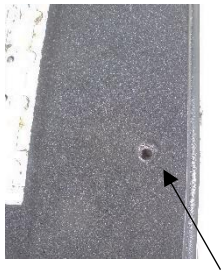
Line number nine up with the seat box and glue over the top of the already fitted pieces.

Number ten will be fitted in the same manner as part number nine.

For a RHD this tag will need to be cut off part nine.

An inch will need to be trimmed on the left and right hand piece for correct fitment.

WHEEL ARCH CARPETS REMOVAL AND FITTING.



Undo the seat bolt anchorage point, to then remove the old wheel arch carpet.



Firstly, glue the inside edge of the wheel arch. This creates a good bond for the carpet.



Then glue the back of the wheel arch carpet along the banded edge.

Fit the carpet from the front to back. Gently keeping the bound edge next to the groove in the wheel arch.



Once you are happy with the fit, you can then use the spray glue to fit the rest of the wheel arch carpet.



Locate the seat anchorage point hole and carefully cut the hole to allow for the bolt to go back through.

MAIN CARPET SET FITTING



First you will need to feed the main carpet set over the gear lever.



Feed the accelerator pedal through the carpet and reattach to the throttle pin.



Fit the carpet set over the steering column and make a small incision in the carpet for the carpet fixing stud to come through. Then fit the plastic cover on top.



Pinpoint any fixing that would have been removed from the original carpet and then make the incisions ready for the clips to be reused and refitted.

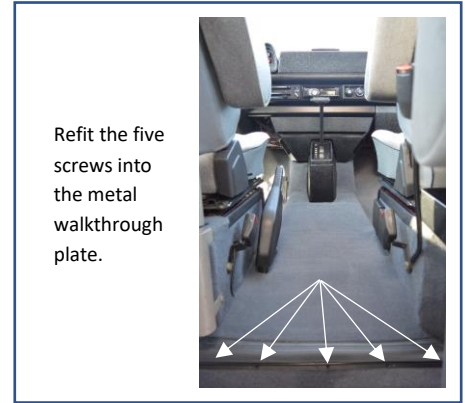
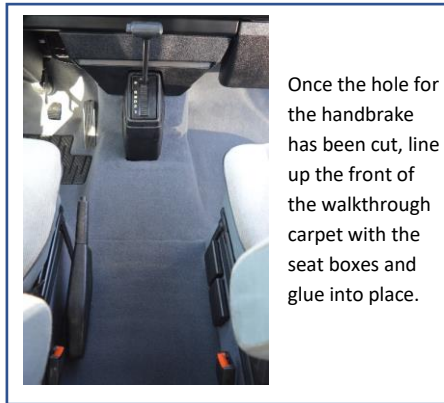


After the clips are fitted the main carpet area is complete.

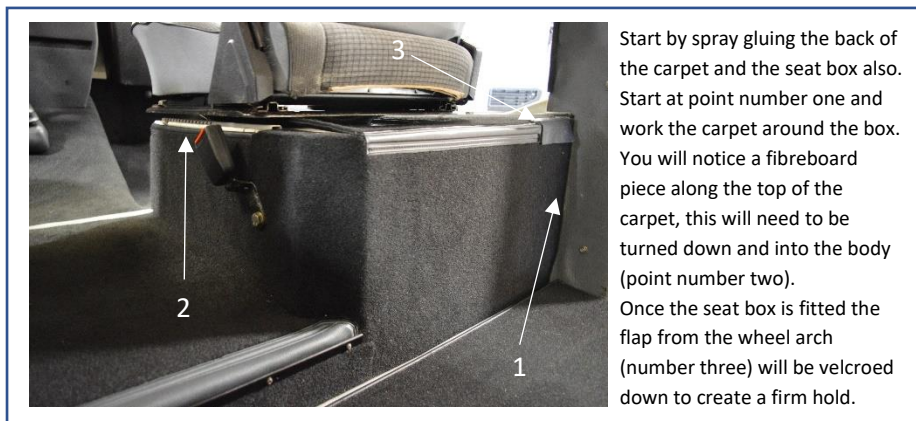


All that is left to do is refit the fascia panel by simply clicking it back into place.

**WALKTHROUGH FITTING**



**SEATBOX FITTING**



YOU HAVE NOW FINISHED FITTING YOUR BRAND NEW NEWTON COMMERCIAL CARPET SET.

HAPPY MOTORING!

(PLEASE SEE BELOW AND TO THE RIGHT AN EXAMPLE OF OUR CARPET FITTED INTO AN AUTOMATIC VAN AND ALSO A MANUAL VAN)

