

SEAT FITTING INSTRUCTIONS

VW TYPE 2 VAN ~ NEWTON VW SUFFOLK RECLINER

Description

Your new VW reclining seats are designed to fit on the metal floor pressings at each end of the factory seat runner positions.

The new seats come fitted with sub frame rails, which are designed to place the seat slides above the factory rails

Wheel Arch Carpets

If you fit one of our replacement carpet sets to go under your new reclining seats – please specify **no cut outs for seat runners.** Your carpet will then cover the unused factory seat runners, this giving a better result.

Fitting

1. Remove your old seats.
2. If carpets are being replaced, remove old carpets.
3. Position drivers seat in place.
4. Adjust slides, so that the sub frames sit over the factory seat slides.

Note:- There are 2 types of factory seat slide:-

Early Type (see photo A,B,C,D, E & F) with seat locking slots on inside edge of runner. The metal wheel arch and inner seat rail pressings are of a slightly different shape to the late type, with a less pronounced flat area in front of the inner and outer runners.

Late Type (see photo G,H,I & J) with seat locking slots in central hump of runner. New seat sub frames sit directly in line with originals.

You may need to use a spacer between the floor and sub frame to keep the seat level on the outer runner if the bolt hole overhangs the flat part of the seat box (please call the office for 4 spacers if required) (See photo D) The new seat will need to be moved slightly inwards at the front in order to find the best fit position.

1. When the seat is in a satisfactory position, mark front and rear hole positions (we suggest mark and drill one at a time starting with inner front.) Drill 8.5mm / 9.0mm holes. We recommend using M8 nuts and bolts with large washers under wheel arch – if smaller nuts & bolts used, reduce drill size accordingly.
2. When all holes have been drilled, bolt seat in place (as previously suggested for earlier type – spacers may be required) (See photo D)

Passenger Seat

1. Remove rubber supports from floor – these sit under the front of the original seat frames. (These are not required)
2. The inner metal seat bracket can be removed. (Held in place with 2 small nuts and bolts.)
3. The outer bracket is welded in place on top of the wheel arch, this can be cut off or hammered flat (towards the inside of the car.)

ay as th



Photo A



Photo B



Photo C



Photo D

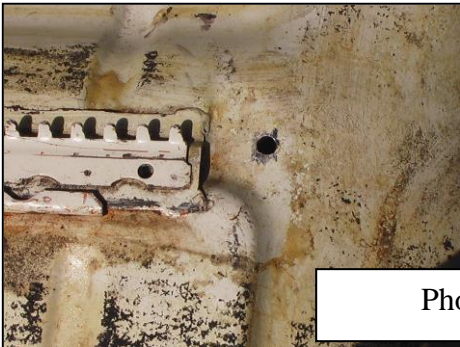


Photo E

Photo F



Photo G

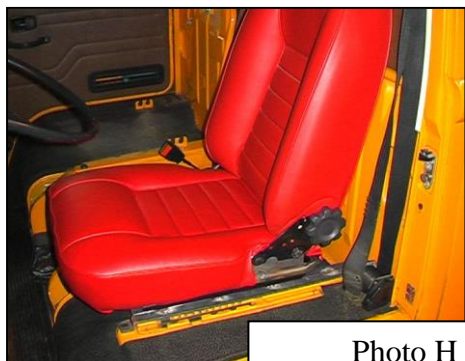


Photo H



Photo I



Photo J