

NEWTON COMMERCIAL

FITTING INSTRUCTIONS – MX-5 Mk 1 DOOR PANELS – (1989 TO 1997)

WE WOULD SUGGEST READING THROUGH THESE INSTRUCTIONS BEFORE COMMENCING WORK IN ORDER TO GET AN IDEA OF THE SEQUENCE OF EVENTS AND TOOLS REQUIRED.

ALL TYPES OF DOOR TRIMS (MX-5, EUNOS & MIATA) ARE SHOWN IN THESE INSTRUCTIONS (6 DIFFERENT TYPES FROM 1989 TO 1997) PLEASE NOTE THAT THE DOOR CAPPING ASSEMBLY IS ATTACHED TO THE TOP OF THE DOOR TRIM PANEL & THEREFORE BOTH ITEMS ARE REMOVED FROM THE DOOR AS ONE ASSEMBLY.

DAMAGE CAN OCCUR TO THE CAPPING IF ATTEMPTS ARE MADE TO REMOVE IT SEPARATELY.

1) REMOVAL OF OLD DOOR TRIM & CAPPING (DP8040 SHOWN – 1989/93) **OTHER TYPES FOLLOW A SIMILAR PROCEDURE.**



REMOVE THE PLASTIC CAP AT THE TOP OF THE DOOR PULL



WITH A PHILIPS SCREWDRIVER, REMOVE THE TWO LARGE SELF TAPPING SCREWS UNDER THE ARMREST



REMOVE THE SCREW AT THE TOP OF THE DOOR PULL. THE ASSEMBLY WILL NOW LIFT OFF THE DOOR.



REMOVE THE PHILIPS SCREW INSIDE THE LATCH ESCUTCHEON



LIFT THE ESCUTCHEON OVER THE DOOR LATCH



PLACING A TRIM REMOVAL TOOL (OR A FLAT BLADE SCREWDRIVER) BETWEEN THE TRIM PANEL & THE DOOR, RELEASE THE CLIPS DOWN THE FRONT, BACK & ALONG THE BOTTOM OF THE DOOR, USING A LEVER ACTION.



WHEN ALL CLIPS ARE DISENGAGED, THE PANEL & SPEAKER COVER CAN BE PULLED AWAY FROM THE DOOR



LIFT THE PANEL ASSEMBLY UPWARDS TO DISENGAGE THE TOP EDGE OF THE CAPPING FROM THE DOOR



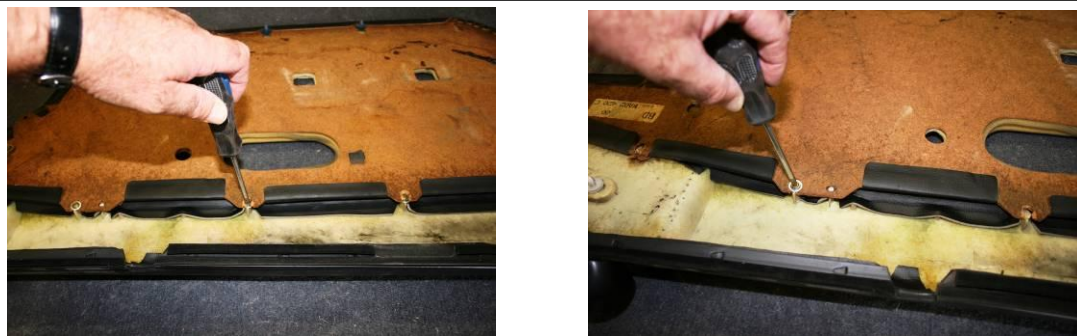
THE TRIM PANEL / CAPPING ASSEMBLY CAN NOW BE LIFTED AWAY FROM THE DOOR. BE AWARE OF ANY WIRING IF CUSTOM SPEAKERS HAVE BEEN FITTED. REMOVE ALL PANEL CLIPS.

2) REMOVAL OF CAPPING FROM DOOR TRIM PANEL

EACH CAPPING IS ATTACHED TO IT'S DOOR TRIM PANEL WITH 5 SMALL SELF TAPPING SCREWS ALONG ITS LENGTH PLUS TWO HEAT EXPANDED PLASTIC POSTS THROUGH HOLES IN THE PANEL (AT THE FRONT) ALSO THE VINYL AT THE FRONT END IS TURNED OVER THE EDGE OF THE TRIM PANEL & FIXED IN PLACE WITH STAPLES.



REMOVE THE STAPLES HOLDING THE VINYL FLAP IN PLACE OVER THE FRONT OF THE TRIM PANEL.
(USE A STAPLE/NAIL REMOVING TOOL OR SMALL FLAT BLADE SCREWDRIVER)



REMOVE THE 5 SELF TAPPING SCREWS / WASHERS
DO NOT THROW THESE AWAY, YOU WILL NEED TO RE USE THEM WHEN RE-FITTING NEW DOOR TRIM PANELS.



PUSH THE TWO FRONT PLASTIC POSTS THROUGH THE TRIM BOARD.(THESE MAY REQUIRE SOME TRIMMING AT THEIR EDGES TO PASS THROUGH THE HOLES)
THE CAPPING IS NOW SEPARATED FROM THE TRIM PANEL.

IF YOUR DOOR CAPPINGS ARE IN GOOD CONDITION, THEY CAN BE CLEANED & RE-FITTED.
ALTERNATIVELY THE CAPPINGS CAN BE RE-COVERED USING OUR DOOR CAPPING RECOVERING KIT.
AFTER ANY NECESSARY REPAIRS TO THE PLASTIC MOULDING,
(PART NUMBER DC8040) THIS COMES COMPLETE WITH FITTING INSTRUCTIONS.

3) RE-FITTING DOOR CAPPINGS TO YOUR NEW DOOR TRIM PANELS.

WE SHOW THE EARLY DOOR PANEL (OUR DP8040) WITH THE SEPARATE PLASTIC SPEAKER COVER ASSEMBLY HERE.
SEE PAGES 5 & 6 FOR ALL OTHER TYPES OF DOOR. IT IS BETTER TO FIT THE SPEAKER COVERS TO THE DOOR TRIM PANEL
BEFORE FITTING THE DOOR CAPPINGS .

NOTE: COVER YOUR WORKTOP WITH SOME CARPET OR A BLANKET TO AVOID DAMAGE TO YOUR TRIM PANELS



RH DOOR CAPPING & TRIM PANEL READY FOR ASSEMBLY.



LINE UP THE CAPPING WITH THE TRIM PANEL & FIX TOGETHER USING THE SMALL SELF TAPPING SCREWS



PUSH THE TWO FRONT PLASTIC POSTS THROUGH THE HOLES. (THESE CAN BE MELTED OVER USING A HOT SOLDERING IRON)



PULL THE FRONT FLAP OF THE CAPPING FORWARDS & OVER THE EDGE OF THE TRIM PANEL. STAPLE IT IN PLACE & TRIM OFF THE EXCESS. (IF YOU DO NOT HAVE A STAPLE GUN THEN USE A CONTACT ADHESIVE)



ORIGINAL FACTORY PANEL CLIPS. IF YOURS ARE IN GOOD ORDER, THEY CAN BE RE USED



NEW REPLACEMENT CLIPS ARE AVAILABLE



INSERT THE CLIPS INTO THE 10 KEY HOLES IN THE TRIM PANEL & 1 AT THE FRONT OF THE CAPPING

COMPLETED DOOR PANEL WITH CAPPING & CLIPS ATTACHED. READY TO FIT INTO CAR.



4) FITTING THE DOOR PANEL ASSEMBLY TO THE CAR

CLEAN ALL PLASTIC DOOR FITTINGS – ARMREST, SPEAKER SURROUND & HANDLE ESCUTCHEON.



LOCATE THE DOOR ASSEMBLY ONTO THE TOP OF THE DOOR. KEEP THE BOTTOM EDGE AWAY FROM THE DOOR



ENSURE CLIPS ARE SITTING OVER THE TOP OF THE CLIP HOLES. THEN PRESS EACH CLIP FIRMLY INTO PLACE



REFIT CLIPS INTO SPEAKER SURROUND MOULDING & PUSH FIRMLY INTO PLACE ONTO DOOR



REFIT DOOR PULL/ARMREST WITH ITS THREE SELF TAPPING SCREWS IN PLACE. THEN REPLACE THE SMALL PLASTIC SCREW COVER AT THE TOP



REFIT THE DOOR LATCH ESCUTCHEON & SECURE WITH ITS SCREW



WIPE OVER WITH A SOFT CLOTH & YOUR DOOR PANEL IS NOW COMPLETE. REPEAT THE PROCEDURE FOR THE OTHER DOOR PANEL ASSEMBLY & THE JOB IS FINISHED.

THE FOLLOWING 2 PAGES SHOW ANY ADDITIONAL INFORMATION FOR THE FITTING OF ALL OTHER DESIGNS OF MAZDA Mk 1 DOOR TRIM PANELS.

AS PREVIOUSLY INDICATED, THEY ALL CONSIST OF A FULL HARDBOARD PANEL WITH HOLES CUT TO ACCEPT THE VARIOUS TYPES OF SPEAKER GRILLES & SURROUNDS. YOU WILL NEED TO RE-USE YOUR OLD GRILLES, OR IF CHANGING THE STYLE OF DOOR PANEL, YOU WILL NEED TO OBTAIN REPLACEMENTS.

NOTE: THE PLASTIC SPEAKER GRILLES ARE **NOT** INTERCHANGEABLE BETWEEN THE DIFFERENT STYLES OF DOOR TRIM PANEL BECAUSE THEY ARE **NOT** ALL THE SAME SIZE & HAVE DIFFERENT FIXING POSITIONS.

APART FROM THE SPEAKER DIFFERENCES, THE METHOD OF FITTING THE TRIM PANELS TO THE CAPPINGS AND DOORS REMAINS THE SAME.

DP8044 – (MX-5/EUNOS) MANUAL OR ELECTRIC WINDOWS



THE SPEAKER FINISHERS ARE FIXED TO THE DOOR TRIM BY PLASTIC PINS PASSING THROUGH LOCATING HOLES IN THE BOARD. THE PINS ARE HEAT MELTED AT THEIR ENDS; THIS HOLDS THEM FIRMLY IN PLACE. THE ENDS OF THE PINS CAN BE CUT AWAY TO REMOVE FROM OLD DOOR OR TRY RE MELTING WITH A SOLDERING IRON & SQUEEZING THE END OF THE SOFTENED PIN WITH PLIERS TO NEAR IT'S ORIGINAL SHAPE SO THAT THE PINS WILL PASS THROUGH THE LOCATING HOLES.



THE SPEAKER COVER WILL ONLY FIT IN ONE DIRECTION DUE TO THE POSITION OF THE LOCATING LUGS. LINE UP & PUSH ONTO THE DOOR PANEL FROM THE FRONT FACE



WHILST HOLDING IN PLACE, REST THE TRIM PANEL FACE DOWN ON THE WORK BENCH & APPLY DOWNWARDS PRESSURE AROUND THE EDGES OF THE SPEAKER HOLE SO THAT THE PLASTIC PINS PROTRUDE THROUGH THE LOCATING HOLES.



IF THE PLASTIC PINS ARE TOO SHORT TO BE HEATED & TURNED AT THEIR ENDS, THEN WE WOULD SUGGEST USING A HOT MELT GLUE GUN TO FIX IN PLACE. SIMPLY PUSH THE BOARD DOWN FIRMLY AND SQUIRT HOT GLUE INTO THE HOLE BESIDE THE PIN, WAIT FOR THE GLUE TO COOL BEFORE RELEASING THE PRESSURE

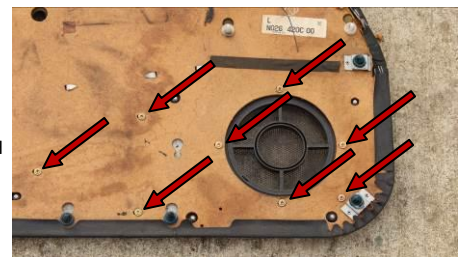


THIS PICTURE SHOWS THE DOOR PANEL WITH ITS SPEAKER COVER & DOOR CAPPING ASSEMBLED, READY FOR FITTING ONTO THE DOOR.

DP8045 – ELECTRIC WINDOWS ONLY



THE SPEAKER SURROUND ASSEMBLY IS HELD IN PLACE WITH 8 SELF TAPPING SCREWS THROUGH THE BACK OF THE TRIM PANEL INTO THE MOULDED PLASTIC CARRIER/SPEAKER GRILLE. (THE POLISHED METAL PLATE ON THE FRONT WITH ITS 5 FIXING SCREWS ARE COSMETIC ONLY & ARE PART OF THE WHOLE ASSEMBLY)



DP8047 – MIATA 1994-95 MANUAL OR ELECTRIC WINDOWS



THE SPEAKER GRILLE ON THIS DOOR IS SIMPLY A FABRIC COVERED METAL MESH HELD IN PLACE WITH 4 METAL TABS THESE ARE LOCATED IN THE 4 INDENTS IN THE EDGE OF THE ROUND SPEAKER HOLE, THEN BENT OVER THE BACK OF THE TRIM BOARD (AS SHOWN IN THE PICTURE)



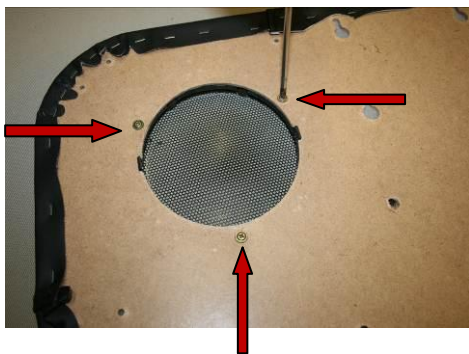
THIS DOOR FEATURES A COVERED VACUUM FORMED POCKET AT ITS LOWER REAR CORNER. TO ALLOW ACCESS TO THE TOP OF THE POCKET, THE ARMREST WAS OMITTED & WAS REPLACED BY THE LARGE SLOPING DOOR PULL, (AS SHOWN IN THE PICTURE) THE LOWER ANCHORAGE OF THE DOOR PULL PROVIDES A FIRM FIXING FOR THE FRONT OF THE POCKET. THE TOP REAR CORNER OF THE POCKET IS ANCHORED TO THE DOOR WITH A SELF TAPPING SCREW HIDDEN UNDER A PLASIC COVER.

DP8048 – ELECTRIC WINDOWS ONLY

THIS DOOR TRIM INCORPORATES THE SAME SPEAKER SURROUND AS OUR DP8045 & THE SAME COVERED VACUUM FORMED POCKET AS OUR DP8047. (AGAIN WITH THE SAME DOOR PULL AS OUR DP8047) SO THE FIXING METHODS ARE AS PREVIOUSLY DESCRIBED.

DP8049 – MIATA 1996-97 - ELECTRIC WINDOWS ONLY

THIS DOOR TRIM PANEL HAS A POCKET DIRECTLY BEHIND THE SPEAKER & RETAINS THE EARLIER DOOR PULL/ARMREST ASSEMBLY. THE MUCH SIMPLER SPEAKER GRILLE IS LOCATED IN ITS HOLE USING TWO MOULDED IN CLIPS WHICH SIT INTO TWO NOTCHED CUT OUTS EITHER SIDE OF THE HOLE. THE GRILLE IS ATTACHED TO THE PANEL USING 3 SELF TAPPING SCREWS.



THIS PICTURE SHOWS THE BACK OF THE TRIM PANEL, THE 2 MOULDED CLIPS & THE 3 FIXING SCREW POSITIONS. (ONE SCREW ABOVE THE CLIPS & 2 BELOW MEANS THE GRILLE CAN ONLY BE FITTED ONE WAY UP)

CARS WITH MANUAL WINDOW WINDERS

THE WINDER HANDLE IS HELD IN PLACE BY A SMALL SPRING CLIP WHICH GRIPS INTO THE WAISTED WINDER SHAFT (SEE PICTURE ON LEFT)

TO REMOVE HANDLE: PUSH THE TRIM PANEL TOWARDS THE OUTSIDE OF THE CAR TO REVEAL THE CLIP. USE A SMALL SCREWDRIVER TO LEVER THE SPRING CLIP UPWARDS, OFF THE SHAFT. **TAKE CARE NOT TO LOSE THE CLIP.**

THE HANDLE WILL NOW WITHDRAW FROM THE SHAFT.

TO RE-FIT THE HANDLE: FIT THE DOOR TRIM PANEL AS SHOWN IN THE PRECEDING INSTRUCTIONS. THE WINDER SHAFT WILL PUSH THROUGH THE HOLE IN THE BOARD INTO THE BACK OF THE VINYL COVERING. CUT A HOLE IN THE VINYL TO REVEAL THE SHAFT. THE HANDLE CAN NOW BE LOCATED ONTO THE SHAFT. PUSH THE TRIM PANEL TOWARDS THE OUTSIDE OF THE CAR & CAREFULLY PUSH THE SPRING CLIP INTO THE TOP OF THE HANDLE SO THAT IT LOCATES ONTO THE SHAFT & LOCKS THE WINDER HANDLE IN PLACE.