

Mini Rear Seat Fitting Instructions (Squab)

These instructions will cover all models from 1960 onwards

- 1) Start by gluing the frame onto the foam making sure you leave an even gap each side, and also make sure the edge of the foam is flush with the top of the frame.



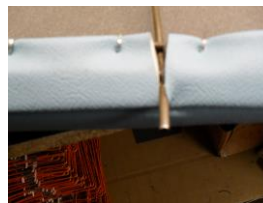
- 2) Once you have done that glue the rest of the foam around the frame. Where the metal bar sticks out at the bottom, snip up to the frame and glue the foam over the first bar. For the corners cut up to the frame and make about three tags so the corners can take the shape of the frame.



- 3) After you have glued the foam around the frame it should look like this. Once you have got to this stage lay the squab cover on the foam and roll the corners over starting one end then moving on to the other side. Then start at the top by putting a couple of D clips to secure the top into position.



- 4) After securing the top into position move down to the bottom and start by cutting up the material where the metal bar comes out right up to the stitch lines. Once you have done that go along the bottom material and fold in half and hog ring onto the second bar on the frame remembering to pull tight. Pull the material around the bar each side and hog ring



- 5) The next step is to start on the bottom corners by folding the flap at the side over and hog ring down. The bottom portion of the cover can then be folded over the top of the side flap and hog ringed in position making sure there are no raw edges showing and also check the front of the covers making sure you have pulled most of the creases out.



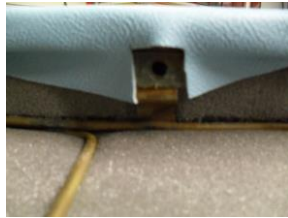
- 6) Once you have done both bottom corners, move on to the sides and snip up to the first bar where the corners is, then trim off excess material around the corner just leaving enough to fold under to hide raw edges and hog ring down, also checking you have no creases on the other side.



- 7) After hog ringing the corners round on both sides, you can now move to the top edge above the corner and trim off some material again leaving enough to fold under and hog ring down.



- 8) Now you are ready to go back to the top and D clip the remaining flap, remembering to pull tight and check there is no creases. When you get to the two brackets at the top of the frame, snip up each side of the bracket to the frame and cut excess off and place a D clip either side.



- 9) The final stage for the squab is the top corners, starting by pulling the side flap in and the top flap over so you can get a nice edge for the finishing look and secure the flap down with a D clip. Once you have done this, the squab is finished and ready to be installed into your Mini.



Mini Rear Seat Fitting Instructions (Base)

- 1) Stage one for fitting the base is to cut a strip of hard board out measuring 3" inches width and 41" inches length and sand down the corners so that they are not sharp then glue the strip of board to the bottom of the foam leaving an even gap each side and also so the wood is flush with the edges of the foam.



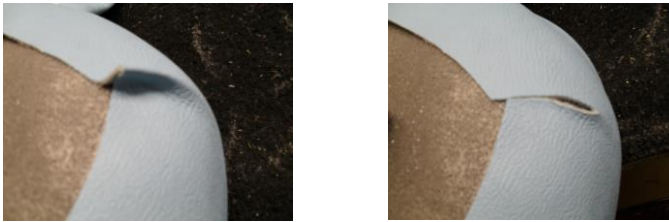
-
- 2) After that, turn the foam over and lay the base cover on the foam making sure it's squarely on. Do not put cover on just yet. Firstly check the front is level with the foam and the back over hangs slightly, once you have checked this, glue the calico flap at the front of the cover down onto the foam.



- 3) The next stage is then to roll the cover over the foam, start at the front by putting a few staples in the front, pull the material flush with the edge of the bored and staple down to hold the cover into position.



- 4) Once you have placed a few staples in the front move on the back corners by gluing these over before the back flap. Spray the raw side of the material and pull the material quite tight to remove any creases on the side of the base. The back corner will have some of excess material: nip the material together to make a flap once you have made a flap cut the flap off flush with material as shown in picture.



- 5) The next step is to glue the back flap over the foam, again pulling quite tight. Start by gluing the side flaps in to hide the raw edge on the material before gluing the whole back flap to the foam. Once you have glued both side flaps you can now glue the whole back flap and stick it to the foam.



- 6) The final stage to the base is to go back to the top and staple in the rest of the material flush with the edge of the bored. Once you get to the corners, fold the side material under and bring the top flap over and staple down still flush with the bored edge. Once you have done this and you're happy the base is now complete and ready to be installed into your Mini.

