

NEWTON COMMERCIAL

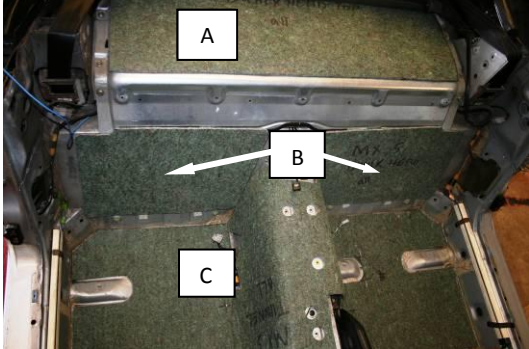
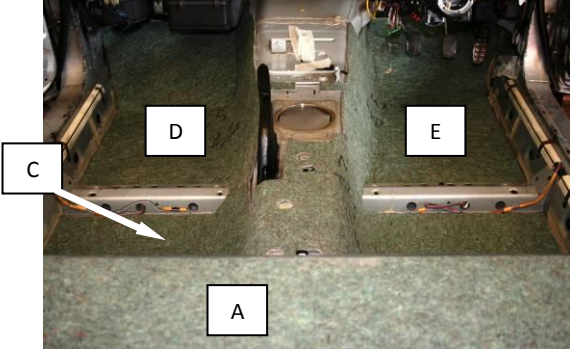
MX-5 Mk1 CARPET SET FITTING INSTRUCTIONS

WE RECOMMEND READING THROUGH THESE INSTRUCTIONS BEFORE COMMENCING WORK. THIS WILL GIVE YOU AN IDEA OF WHAT IS INVOLVED & THE SEQUENCE OF EVENTS. WE ASSUME THAT AT THIS STAGE YOU HAVE REMOVED YOUR OLD CARPETS FROM THE VEHICLE (SEE CARPET REMOVAL INSTRUCTION).

NOTE; WE HAVE SHOWN A RIGHT HAND DRIVE VEHICLE IN THESE INSTRUCTIONS. THE PROCEDURE IS THE SAME FOR LEFT HAND DRIVE.

1) UNDERFELT

YOU WILL FIRST NEED TO FIT A NEW UNDERFELT KIT. THIS IS BEST GLUED IN PLACE USING A SPRAYABLE CONTACT ADHESIVE AS SHOWN BELOW.

PICTURES ABOVE SHOW THE UNDERFELT GLUED INTO THE CAR.

A) REAR PARCEL AREA
C) REAR FLOOR & TUNNEL (ONE PIECE)

B) REAR BULKHEAD (TWO PIECES)
D) PASSENGER SIDE FOOTWELL
E) DRIVER SIDE FOOTWELL

IN ADDITION TO THE PIECES SHOWN ARE 4 SMALL DISCS OF FELT. THESE ARE FIRST GLUED INTO THE CIRCULAR RECESSES IN THE FLOOR PAN BEFORE THE MAIN FELT COMPONENTS ARE GLUED IN PLACE.

2) REAR PARCEL AREA CARPET.

FIT THIS NEXT AS YOU WILL NEED TO CLIMB INSIDE THE CAR TO REACH ALL THE FIXINGS. NO POINT WALKING ALL OVER NEW CARPETS, POSSIBLY CAUSING DAMAGE.



THIS MOULDED CARPET COMES COMPLETE WITH IT'S 5 TONNEAU FIXING STUDS ATTACHED, BOUND EDGES & ALL CLIP HOLES PUNCHED.



ALL PLASTIC FIXING CLIPS ARE PROVIDED IN THE KIT



IF THE SOFT TOP IS FITTED TO THE CAR, STAND IT IN THE UP POSITION FOR EASE OF ACCESS TO THE REAR. ENSURE THE UNDERFELT IS GLUED IN PLACE. THEN – **(OPTION 1)**- PUSH A PLASTIC CLIP IN THE CENTRAL HOLE (SEE ARROW) TO FILL IT. THIS MEANS NO CLIP THROUGH THE CARPET. **(OPTION 2)**-DO NOT FIT THE CLIP AT THIS STAGE.



INSERT THE CARPET INTO THE CAR. PUSH IT FULLY REARWARDS SO THAT THE BOUND EDGE SITS LEVEL WITH THE METAL LIP. LINE UP THE CLIP HOLES & INSERT THE PLASTIC CLIPS ALL ROUND.



HOOD STOPS SCREWED IN PLACE

WITH THE SOFT TOP REMOVED FOR CLARITY, THIS PICTURE SHOWS CARPET FULLY FITTED – (DISREGARD THE BULKHEAD CARPET & CLIPS AT THIS STAGE, AS THESE ARE FITTED LAST) IF YOU WISH TO FIT THE CENTRAL CLIP (SEE ABOVE), LOCATE THE HOLE, MAKE A SMALL CROSS CUT & PUSH THE CLIP IN PLACE.

3) MAIN FLOOR & TUNNEL CARPET.

THE ORIGINAL MAZDA CARPET WAS SECURED AT THE SILL USING PLASTIC STRIPS (SIX IN TOTAL) WHICH PUSHED OVER THE JOINING SEAM OF THE BODY.

THESE STRIPS WERE STAPLED ON TO THE EDGE OF THE CARPET. IF YOUR STRIPS ARE IN REASONABLE CONDITION, YOU MAY WISH TO RE-USE THEM. THE ALTERNATIVE METHOD IS TO FIT THE CARPET IN THE CAR, THEN USE A SPRAYABLE CONTACT ADHESIVE TO GLUE THE SILL AREA & TUNNEL SIDES IN PLACE AGAINST THE BODY. THUS HOLDING THE CARPET IN PLACE.



FOR THIS REASON THE INSTRUCTIONS BELOW SHOW BOTH METHODS, CLIPS ON THE PASSENGER SIDE & GLUE ON THE DRIVERS SIDE.

a) REMOVE THE CLIPS FROM THE ORIGINAL CARPET.

		
PROFILE OF THE PLASTIC CLIP	USING A FLAT BLADED SCREWDRIVER, OPEN UP THE STAPLES & REMOVE THEM.	DRILL THREE 4mm HOLES; (SUGGEST USING A WOODEN BLOCK), FILE OFF ANY SWARF.

		
LAY THE CARPET IN PLACE (MORE DETAILS BELOW), WHEN YOU ARE HAPPY WITH THE FIT, PLACE A PLASTIC ON THE SILL IN LINE WITH THE MIDDLE OF THE CROSS MEMBER. THEN PLACE ONE TO THE FRONT & ONE TO THE REAR, APPROX 70mm (2 1/2 INCHES) APART). MARK HOLE POSITIONS ON CARPET & EACH PLASTIC INDICATING ITS POSITION. (i.e. LH/RH – FRONT, MID, REAR). REMOVE CARPET FROM CAR.		

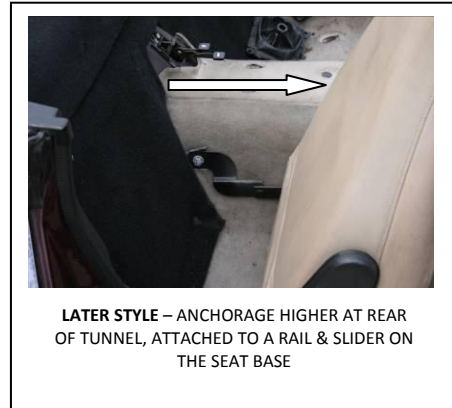
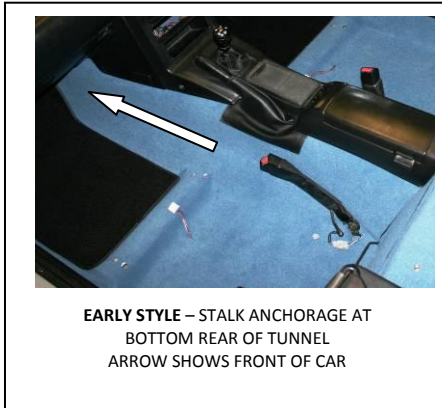
b) FIXING CLIPS ONTO NEW CARPET

	
BIFURCATED RIVETS ARE SUPPLIED	START IN THE MIDDLE, HOLD PLASTIC IN PLACE ON TOP OF CARPET, (EDGE OF CARPET TO THE SMALL LIP UNDER PLASTIC) PUSH A RIVET INTO HOLE & TAP THROUGH CARPET (USE A WOODEN BLOCK)

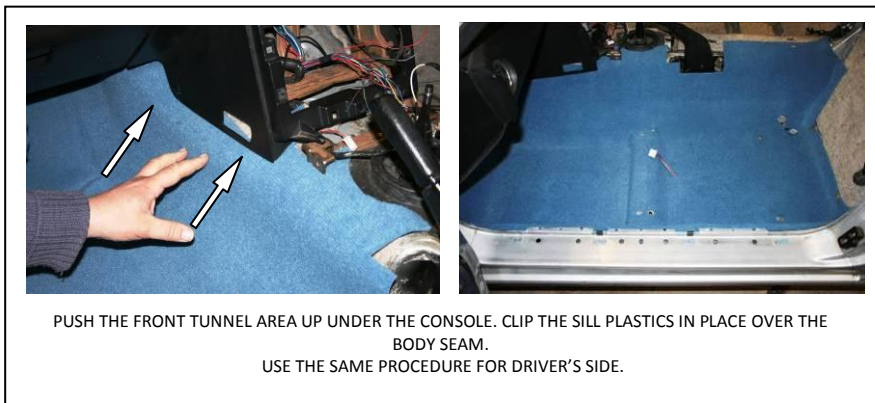
			
WHEN ALL THREE RIVETS ARE IN PLACE, TURN THE CARPET OVER. LAY A SUITABLE METAL PLATE ON TOP OF WOODEN BLOCK. THIS GIVES A SOLID TOP TO WORK WITH. SPREAD THE RIVET LEGS USING A LARGE SCREWDRIVER & TAP FLAT WITH A HAMMER.			


ALL THREE PLATES RIVETTED TO THE CARPET, READY TO FIT INTO CAR

INNER SEAT BELT ANCHORAGE; ON EARLY Mk1 CARS THE INNER SEAT BELT ANCHORAGE, (A FLOOR MOUNTED STALK) WAS FIXED AT THE BOTTOM REAR OF THE TUNNEL. ON LATER CARS THE INNER ANCHORAGE WAS MOUNTED ON THE TUNNEL SIDE OF THE SEAT BASE FRAME (VIA A SLIDE RAIL WHICH WAS ITSELF ANCHORED TO THE REAR OF THE TUNNEL BUT IN A HIGHER POSITION). BOTH OF THESE TUNNEL POSITIONS ARE MARKED ON THE BACK OF YOUR NEW CARPETS. IDENTIFY THE CORRECT POSITION FOR YOUR CAR (UPPER OR LOWER), USING THE PICTURES BELOW, THEN CUT OUT THE HOLE AROUND THE OUTSIDE OF THE MARKED LINE AND YOU ARE READY TO PROCEED.



c) FITTING CARPET INTO CAR – PASSENGERS SIDE. (RE-USING THE ORIGINAL PLASTIC SILL CLIPS)



d) FITTING CARPET INTO CAR – DRIVER'S SIDE. (FIXED IN PLACE USING GLUE)





PULL THE CARPET AWAY FROM THE TUNNEL SIDE & SPRAY ADHESIVE ONTO BACK OF CARPET & THE TUNNEL FELT. WHEN THE ADHESIVE IS TACKY, PUSH THE CARPET INTO PLACE ON THE TUNNEL.



WE SUPPLY A GAITER WITH EACH CARPET SET. IT IS DESIGNED TO FIT OVER THE TOP OF YOUR EXISTING HANDBRAKE ASSEMBLY (INCLUDING THE PLASTIC SHROUD). PULL THE GAITER OVER THE TOP OF THE HANDBRAKE (AS SHOWN ABOVE). THE OPEN END IS A TIGHT FIT OVER THE HANDLE. THE SKIRT IS HELD IN PLACE ON THE CARPET WITH HOOK VELCRO, SEWN UNDER THE OUTSIDE HEM



PULL THE GAITER OPENING TO THE BOTTOM OF THE HANDLE THEN SPREAD THE GAITER SKIRT FLAT ONTO THE SURROUNDING TUNNEL CARPET & PRESS INTO PLACE (THE VELCRO WILL HOLD IT IN POSITION).



REFIT THE 'B' POST PLASTIC TRIM PANEL UNDER THE EDGE OF THE LOAD AREA CARPET, FEED THE SEAT BELT THROUGH ITS SLOT & REPLACE THE ESCUTCHEON



REFIT OUTER & INNER SEATBELT ANCHORAGES (16mm SOCKET). RE-CONNECT PLUG AT BOTTOM OF INNER ANCHORAGE. (NOTE; EARLY TYPE SHOWN ABOVE)



LOCATE CLIP HOLES, THEN RE-FIT LEFT & RIGHT HAND PLASTIC TRIM PANELS. PUSH THE CARPET FULLY IN PLACE WHILST DOING THIS.



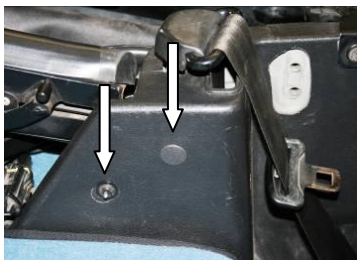
RE-FIT THE FRONT DOOR SEALS. PUSH FIRMLY IN PLACE.



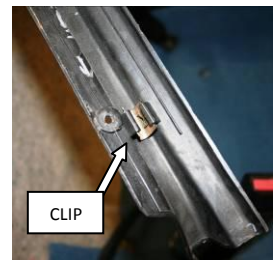
RE-FIT REAR DOOR SEALS. ENSURE THEY LINE UP AT THE TOP



RE-FIT LEFT & RIGHT CAPPINGS. EACH FIXED IN PLACE WITH A CROSS HEAD SCREW & A "LIFT THE DOT" SCREW. (USE A 10mm SPANNER TO TIGHTEN).



RE-FIT THE PLASTIC PLUG & THE "LIFT THE DOT" SCREW (10mm SPANNER)



POSITION THE PLASTIC SILL STRIPS OVER THE SILL JOINTS. THIS WILL COVER THE PLASTIC CARPET CLIPS (IF FITTED) & THE ENDS OF THE DOOR SEALS. MAKE SURE THE SMALL METAL CLIPS ARE IN PLACE



RE-FIT THE 4 CROSSHEAD SCREWS



SILL STRIP RE-FITTED.



RE-FIT THE DRIVERS FOOT REST. (10mm SOCKET)

e) FIT REAR BULKHEAD CARPET



THE BULKHEAD CARPET IS FITTED AS SHOWN WITH ITS CENTRE OVER THE TUNNEL. THE BOTTOM EDGE SITS ON TOP OF THE FLOOR MATS & IS HELD IN PLACE USING 4 PLASTIC STUDS (YOU SHOULD HAVE NO DIFFICULTY LINING UP THE HOLES). THE TOP EDGE IS POSITIONED UNDERNEATH THE FRONT EDGE OF THE REAR LOAD AREA CARPET. BOTH ARE HELD IN PLACE WITH 5 PLASTIC STUDS



CLEAN ALL THE CENTRE CONSOLE PARTS



RE-FIT THE FRONT PANEL. PUSH THE ELECTRICAL PLUG IN PLACE AT THE BACK OF THE SWITCH. REPLACE THE PANEL & RE-FIX THE 2 SCREWS UNDER THE AIR VENT HOLES.



RE-FIT THE SCREW AT THE LEFT HAND BASE



REPLACE THE AIR VENTS



RE-FIT THE PLASTIC PANEL UNDER THE STEERING COLUMN.



REPLACE THE 2 SCREWS & THE PLASTICCOVERS ON EACH SIDE OF THE CONSOLE.



OFFER UP THE CENTRE CONSOLE ASSEMBLY & RE-CONNECT THE 2 PLUGS



TURN THE CONSOLE THE RIGHT WAY UP. LOCATE THE REAR END FIRST OVER THE LEVERS, THEN LOWER THE FRONT END PASSING THE GEAR LEVER THROUGH ITS GAITER. REFIT THE 5 CONSOLE SECURING SCREWS.



REFIT THE ASHTRAY, GEAR KNOB & ANY RADIO EQUIPMENT. YOUR CARPET SET FITTING IS NOW COMPLETE. FINALLY REFIT YOUR SEATS (DON'T FORGET THE ELECTRICAL CONNECTIONS UNDERNEATH) & RECONNECT THE BATTERY. YOUR CAR IS NOW READY TO DRIVE.