



PRODUCT MANUAL

Maitre D Fire Pit

Item #: C1035



Manufactured by:

CC Products LLC

PO Box 155

Aurora, Utah



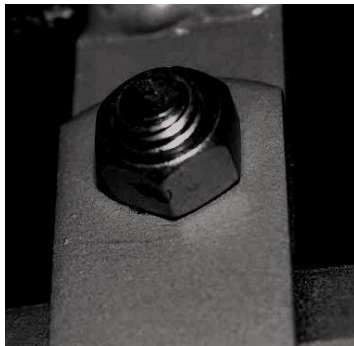
Questions or Concerns?

E-mail: info@ccfandw.com

UNIT COMPONENTS

Description	Quantity
Stainless Steel Fire Plate	1
12" Stainless Steel Burner	1
24" Flex Line	1
Key Valve	1
3" Key	1
20 lb Media (Lava)	1
LP Conversion Orifice Kit (LP Version Only)	1

TABLE SECURING BOLT



All units arrive with table tops secured with the table securing bolt to enable easy moving of the unit. Once your unit is positioned in your outdoor space the bolt can be removed to allow the top to be raised. Reinserting the bolt is not necessary unless moving the unit is desired.



SAFETY INFORMATION

WARNING: TO AVOID INJURY AND POSSIBLE PROPERTY LOSS PLEASE FOLLOW THESE WARNINGS

(Natural Gas Version)

- FOR OUTDOOR USE ONLY
- Do not use the fire pit indoors. Lack of ventilation due to carbon monoxide fumes can cause death.
- Do not use under combustible structures/surfaces including wooden decks.
- Dispose of packaging materials properly.
- Keep children away from hot fire pit.
- Fire pit remains very hot for a period of time after using.
- Be sure fire pit is cool before attempting to move it.
- Do not touch the fire pit during use, or until the fire is completely out and cooled down.

WARNING: Do not store or use gasoline or other flammable vapors and liquids in vicinity of this product.

WARNING: Before use, be sure to check ALL connections for leaks. If leaks are detected, DO NOT USE FIRE PIT. Turn off main supply and repair immediately.

WARNING: When fire pit is not in use, keep the main gas supply valve in the OFF position and the tank valve in the OFF position (LP version).

WARNING: Supply lines may need to be purged prior to first ignition. If flame does not begin within 5 seconds, turn the key valve completely OFF and wait 5 minutes. After 5 minutes turn the main valve on **WITHOUT** an ignition source for 15 seconds or until the gas aroma is detected. Then turn the main valve again to the OFF position and wait 10 minutes.

WARNING: Do not use fire pit if any part has been submerged under water. Immediately call a qualified service technician to inspect the fire pit.

WARNING: Never use any material that is dense or non-porous and holds moisture such as gravel, pebbles, river rock, etc. This material, when heated will cause the trapped moisture to boil and fracture unexpectedly which may cause injury and/or blindness. This material is not sufficiently porous to allow heated steam to readily escape.

WARNING: Solid fuels should not be burned in the fire pit. Leaves, sticks, wood, paper, clothing, and food material should be kept away from the fire pit. Make sure that there is no vegetation, or other objects, over the top or sides of the fire pit that could interfere with safe operation. Overhanging objects and vegetation can ignite and cause uncontrollable fire.

WARNING: Do not obstruct the vent holes at the base of the unit. Failure to yield to this warning may result in serious injury and possible property loss.

WARNING: If lava rock or media is wet, allow fire pit to burn for 45 minutes prior to coming within 15 feet of the fire pit. There should be a minimum of a half inch of media between the burner ring and the fire plate.

WARNING: WHEN NOT IN USE THE FIRE PIT SHOULD BE COVERED AT ALL TIMES. This will prevent precipitation, dirt, leaves, and other debris from entering the fire area.

WARNING: For remote control use: To prevent accidental start-up from unwanted RF signals, it is the responsibility of the end user to turn off the power to the electric outlet for the remote control receiver when the fire pit is not in use via wall switch or breaker.

WARNING: It is the responsibility of the installer to follow ALL LOCAL CODES concerning the installation and operation of the fire pit.

(LP Version)(Liquid Propane)

- FOR OUTDOOR USE ONLY
- Do not use the fire pit indoors. Lack of ventilation due to carbon monoxide fumes can cause death.
- Do not use under combustible structures/surfaces including wooden decks.
- Dispose of packaging materials properly.
- Keep children away from hot fire pit.
- Fire pit remains very hot for a period of time after using.
- Be sure fire pit is cool before attempting to move it.
- Do not touch the fire pit during use, or until the fire is completely out and cooled down.

WARNING: Do not store any unconnected LP cylinder in vicinity of fire pit.

WARNING: Do not store or use gasoline or other flammable vapors and liquids in vicinity of this product.

WARNING: Before use, be sure to check ALL connections for leaks. If leaks are detected, DO NOT USE FIRE PIT. Turn off main supply and repair immediately.

WARNING: When fire pit is not in use, keep the main gas supply valve in the OFF position and the tank valve in the OFF position (LP version).

WARNING: Supply lines may need to be purged prior to first ignition. If flame does not begin within 5 seconds, turn the key valve completely OFF and wait 5 minutes. After 5 minutes turn main valve on **WITHOUT** an ignition source for 15 seconds or until the gas aroma is detected. Then turn the main valve again to the OFF position and wait 10 minutes.

WARNING: Do not use fire pit if any part has been submerged under water. Immediately call a qualified service technician to inspect the fire pit.

WARNING: Never use any material that is dense or non-porous and holds moisture such as gravel, pebbles, river rock, etc. This material, when heated will cause the trapped moisture to boil and fracture unexpectedly which may cause injury and/or blindness. This material is not sufficiently porous to allow heated steam to readily escape.

WARNING: Solid fuels should not be burned in the fire pit. Leaves, sticks, wood, paper, clothing, and food material should be kept away from the fire pit. Make sure that there is no vegetation, or other objects, over the top or sides of the fire pit that could interfere with safe operation. Overhanging objects and vegetation can ignite and cause uncontrollable fire.

WARNING: Do not obstruct the vent holes at the base of the unit. Failure to yield to this warning may result in serious injury and possible property loss.

WARNING: If lava rock or media is wet, allow fire pit to burn for 45 minutes prior to coming within 15 feet of the fire pit. There should be a minimum of a half inch of media between the burner ring and the fire plate.

WARNING: WHEN NOT IN USE THE FIRE PIT SHOULD BE COVERED AT ALL TIMES. This will prevent precipitation, dirt, leaves, and other debris from entering the fire area.

WARNING: For remote control use: To prevent accidental start-up from unwanted RF signals, it is the responsibility of the end user to turn off the power to the electric outlet for the remote control receiver when the fire pit is not in use via wall switch or breaker.

WARNING: It is the responsibility of the installer to follow ALL LOCAL CODES concerning the installation and operation of the fire pit.



ASSEMBLY

Estimated Assembly Time: 15 minutes



Connection plumbing should be performed by qualified person only!

- It is the installer's responsibility to ensure a safe installation, and to educate the end user as to how to correctly operate the fire pit.
- **WARNING:** Never alter product or configuration in any way.
- Assemble the fire pit on a non-abrasive surface. If necessary to lay unit on its side, be sure to do so on a padded surface to avoid scratching the face of the fire pit.
- This fire pit should arrive with internal plumbing preassembled. If plumbing connections from key valve up to burner are loose or not connected, **STOP** and ensure the integrity of the components have not been jeopardized. Then proceed by correctly securing the flex line to the burner and key valve.
- Supply line should enter bottom of unit in precut notch **ONLY**.
- **WARNING:** Do not obstruct the vent holes at the base of the unit. Failure to adhere to this warning may result in serious injury and possible property loss.
- Connect supply line to key valve.

START YOUR FIRE PIT

WARNING: Fire pit should be attended by an adult that is familiar with emergency shut-off.

WARNING: Flammable materials should not be placed on or near the fire pit.

WARNING: Children should be supervised when they are in the vicinity of the fire pit.

WARNING: Inspect the fuel supply connection (including all quick disconnect hoses) before use. (Replace hose if there is evidence of abrasion or wear).



It is important to follow these steps when lighting your fire pit.

1. If you smell gas:

FIRST- Shut off gas to appliance.

SECOND- Extinguish any open flame.

If odor continues, keep away from appliance and immediately call gas supplier or fire department.

2. Confirm there is no debris in fire pit (as mentioned in warnings).
3. Turn key valve (clockwise) to CLOSED position.
4. Turn open valve on LP cylinder. (LP Version)
5. Place long handled lighter or match while burning on top of the fire pit.
6. Slowly turn ON gas at key valve.
7. After burner lights ... remove flame.
8. Adjust flame to desired height using the key valve.
9. If burner does not light, turn valve off, allow gas to clear then repeat steps 1-6.

SHUTTING YOUR FIRE PIT OFF

1. Turn key valve (clockwise) to the OFF position.
2. Turn the valve (clockwise) to the OFF position on the LP cylinder.(LP Version)
3. Ensure unit cools completely.
4. Cover the fire pit.



EMERGENCY SHUT OFF

Shut valve off at gas supply. Do not attempt to turn unit off at key valve. Serious injury may occur!

SPECIFICATIONS

Type: Maitre D
Shape: Square
Fuel Type: Natural Gas/Propane
Overall Width/Diameter: 48"
Overall Height: 24"
Weight: 180 lbs

OWNER ASSUMES ALL RISK

*****PURCHASER ASSUMES ALL RISKS IN THE ASSEMBLY AND OPERATION OF THIS UNIT***
***FAILURE TO FOLLOW WARNINGS AND OPERATIONAL INSTRUCTIONS CONTAINED IN THIS
MANUAL CAN RESULT IN SEVERE PROPERTY DAMAGE AND/OR PERSONAL INJURY***
***SMALL EXPANSION/CONTRACTION CRACKS ARE COMMON IN THIS PRODUCT DUE TO THE
NATURE OF ITS DESIGN AND MATERIAL WHEN EXPOSED TO EXTREME HEAT AND ARE NOT
WARRANTABLE*****

IN NO EVENT WILL CC PRODUCTS LLC, OR ITS DIRECTORS, OFFICERS OR AGENTS BE LIABLE TO THE PURCHASER OR ANY THIRD PARTY, WHETHER IN CONTRACT, IN TORT, OR ON ANY OTHER BASIS, FOR ANY INDIRECT, SPECIAL, PUNITIVE, EXEMPLARY, CONSEQUENTIAL, OR INCIDENTAL LOSS, COST, OR DAMAGE ARISING OUT OF OR IN CONNECTION WITH THE SALE, MAINTENANCE, USE, OR INABILITY TO USE THE PRODUCT, EVEN IF CC PRODUCTS LLC OR ITS DIRECTORS, OFFICERS OR AGENTS HAVE BEEN ADVISED OF THE POSSIBILITY OF SUCH LOSSES, COSTS OR DAMAGES, OR IF SUCH LOSSES, COSTS, OR DAMAGES ARE FORESEEABLE. IN NO EVENT WILL CC PRODUCTS LLC, OR ITS OFFICERS, DIRECTORS, OR AGENTS BE LIABLE FOR ANY DIRECT LOSSES, COSTS OR DAMAGES THAT EXCEED THE PURCHASE PRICE OF THE PRODUCT. SOME JURISDICTIONS DO NOT ALLOW THE EXCLUSION OR LIMITATION OF INCIDENTAL OR CONSEQUENTIAL DAMAGES, SO THE ABOVE LIMITATION OR EXCLUSION MAY NOT APPLY TO THE PURCHASER.