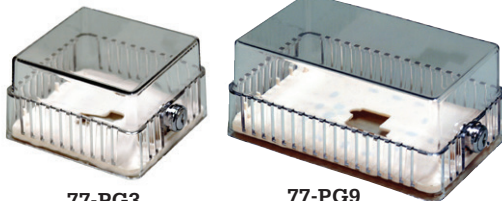


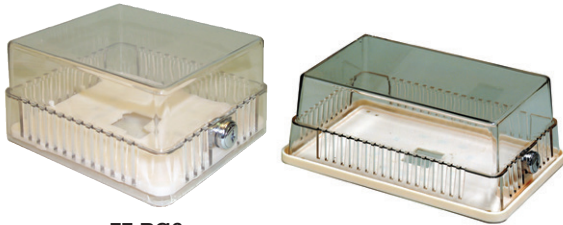
Features

- Hi-impact plastic guards.
- Horizontal and vertical mounting.
- Heavy duty lock and key.
- Comes with complete mounting hardware.
- Each model includes a ring & solid base.
- Colour - clear cover with off white base.



77-PG3
Illustrated

77-PG9
Illustrated



77-PG6
Illustrated

77-PG12
Illustrated



Reduce Inventory!

Our thermostat guards come complete with hardware, ring and solid bases.

Mounting Base Types
All mounting bases are plastic.

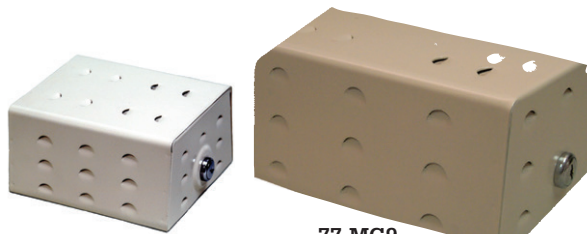
Plastic Thermostat Guards

Part #	Base	Inside Dimensions			Cross Reference	
		L	W	D		
77-PG3	Ring	3.75"	3.50"	2.62"	BTG-EK	F29-0252
	Solid	4.00"	4.00"	2.50"	ECST	029-0178 029-0179
77-PG6	Ring	5.25"	4.62"	3.12"	BTG-K	F29-0251
	Solid	5.75"	5.00"	2.81"	KCBT	F29-0257
77-PG9	Ring	6.31"	3.62"	3.06"	BTG-RK	F29-0253
	Solid	6.62"	4.12"	2.75"	RCBT	029-0143
77-PG12	Ring	8.18"	4.62"	3.56"	BTG-UK	F29-0254
	Solid	8.50"	5.00"	3.87"	UCBT	029-0198

Metal Thermostat Guards

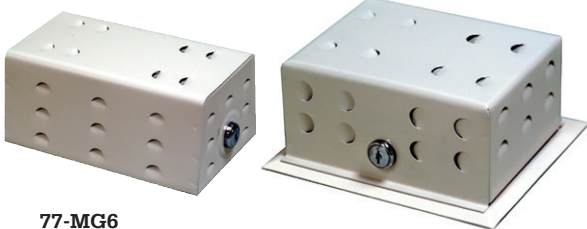
Features

- Durable metal guards.
- Horizontal and vertical mounting.
- Heavy duty lock and key.
- Comes with complete mounting hardware.
- Each model includes a ring & solid base.*
- Colour - off white cover with off white base.



77-MG3
Illustrated

77-MG9
Illustrated



77-MG6
Illustrated

77-MG12R - Hinged
Illustrated



Reduce Inventory!

Our thermostat guards come complete with hardware, ring and solid bases.

Mounting Base Types

- 77-MG3** Plastic
- 77-MG6** Plastic
- 77-MG9** Metal
- 77-MG12R** Metal
- 77-MG12S** Metal

Metal Thermostat Guards

Part #	Base	Inside Dimensions			Cross Reference	
		L	W	D		
77-MG3	Ring	5.31"	4.31"	3.00"	BTG-KWM	KMRT
	Solid	5.62"	5.12"	2.87"	BTG-KM	KMST
77-MG6	Ring	6.31"	3.62"	3.18"	BTG-EM	EMST
	Solid	6.62"	4.12"	3.75"	BTG-RM BTG-RWM	RMRT
77-MG9	Ring	6.75"	4.50"	3.43"	BTG-UWM	UMRT
	Solid	7.18"	5.25"	3.43"	BTG-UM	UMST
77-MG12R*	Ring	6.12"	3.81"	3.12"	BTG-54VLW	F29-0256
77-MG12S*	Solid	6.37"	4.25"	3.00"	BTG-54VL	F29-0255

* Hinged metal guards do not come with both bases.