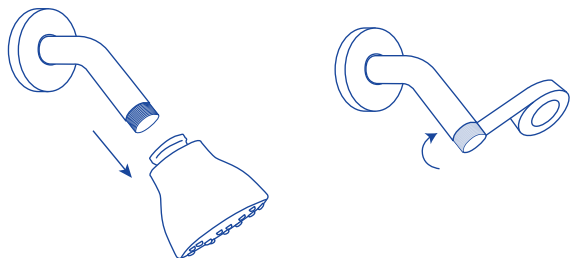
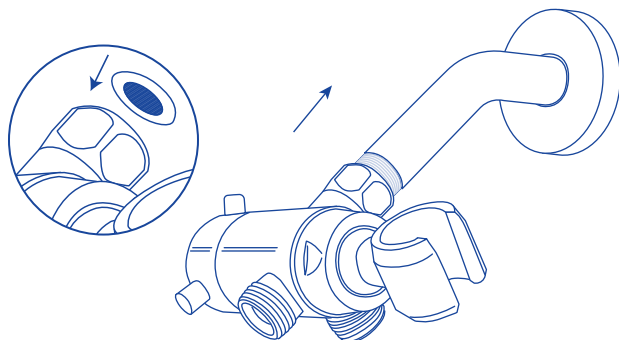


INSTALLATION INSTRUCTIONS

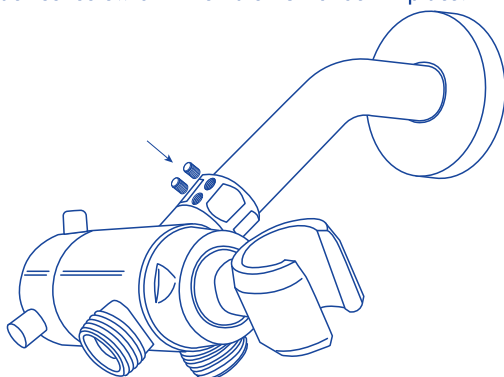
1. Remove existing shower head and clean the shower arm threads. Wrap the shower arm and the male diverter threads with provided thread seal tape — at least 3 wraps, clockwise.



2. Install the diverter. Ensure the washer is inserted inside of the female nut of the diverter. Hand tighten the female nut to the shower arm until it is tight. Align the diverter, then use a wrench to tighten the diverter nut to be certain a leak-free seal is created. Do not over tighten.

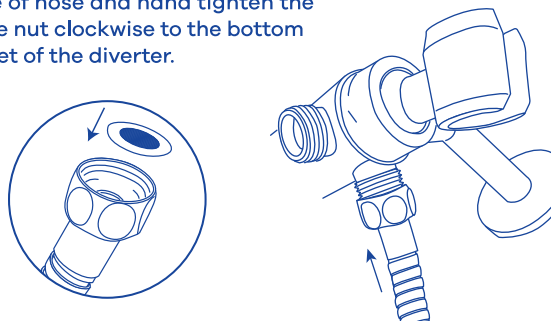


3. Once fully tightened by hand and with a wrench, tighten each set screw on the female nut to lock in place.

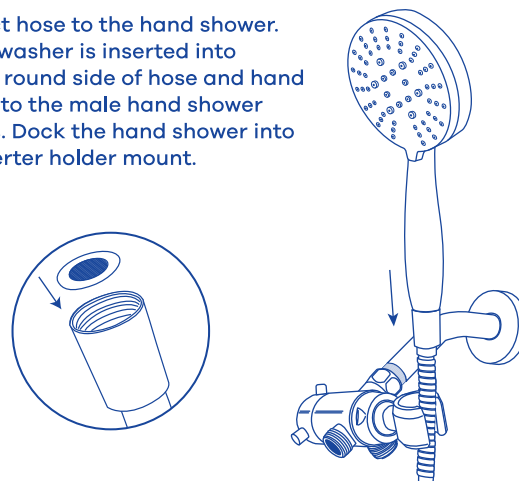


INSTALLATION INSTRUCTIONS (CONT.)

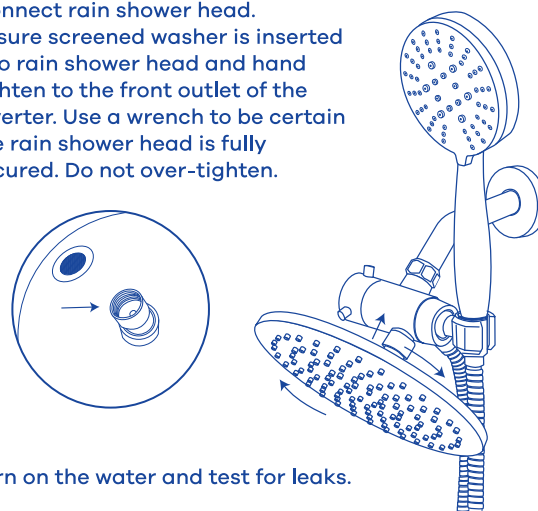
4. Connect hose to the diverter. Ensure washer is inserted into hex nut side of hose and hand tighten the hose nut clockwise to the bottom outlet of the diverter.



5. Connect hose to the hand shower. Ensure washer is inserted into smooth round side of hose and hand tighten to the male hand shower threads. Dock the hand shower into the diverter holder mount.



6. Connect rain shower head. Ensure screened washer is inserted into rain shower head and hand tighten to the front outlet of the diverter. Use a wrench to be certain the rain shower head is fully secured. Do not over-tighten.

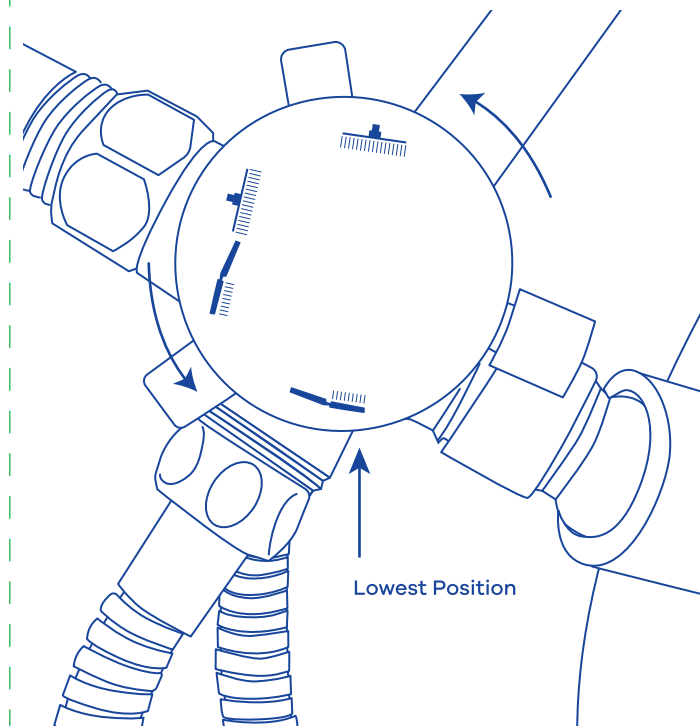
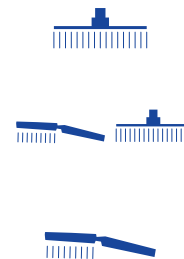


7. Turn on the water and test for leaks.

QUESTIONS ON INSTALLATION OR TROUBLESHOOTING?
EMAIL US AT contact@hammerheadshowers.com

OPERATION

1. To activate spray for rain shower head only, rotate the knob so that the fixed shower points towards the lowest position.
2. To activate spray for both shower heads, rotate the knob so that the two shower head icon is in the lowest position.
3. To activate spray for hand shower, rotate the knob so that the hand shower icon is in the lowest position.



Lowest Position



VISUALS MORE HELPFUL?
CHECK OUT OUR INSTALLATION
VIDEO HERE:

WWW.BIT.LY/DUAL-SHOWER-VIDEO