

Please read this instruction manual carefully before using your stirrup pump.

Stirrup pumps are the most convenient and affordable way to charge your PCP air rifle. Webley Stirrup Pumps have several features which provide easier use and longer lifetime of the pump.

- Maximum 230 bar fill pressure.
- Ergonomically designed handle with synthetic cover.
- Built-in moisture trap & built in particle filter embedded in one side of the handle which traps the moisture and protects your pump & air rifle.
- Additional compartment in the other side of the handle where you can put spare parts or accessories.
- Built in precise pressure-gauge embedded in the frame which protects it from external impacts.
- Easily demountable design. Locking system which allows easier carrying of the pump.
- Comes with hose and connector.



STIRRUP PUMP

INSTRUCTION MANUAL

Webley (International) Ltd, Universe House
Key Industrial Park, Willenhall
West Midlands, WV13 3YA
ENGLAND
Tel: +44 (0) 1902 722 144
Fax: +44 (0) 1902 722 880
Website: www.webley.co.uk
E-mail: sales@webley.co.uk

ASSEMBLY

Assemble your stirrup pump as shown in the 'Assembly steps' picture. Don't use tools to tighten the handle. Finger tight is sufficient.

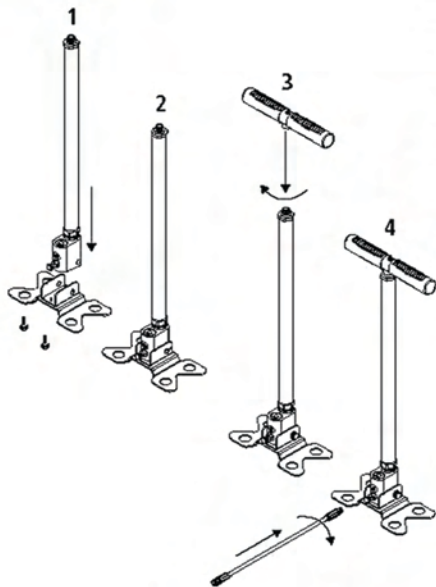
USE OF THE PUMP

1. Attach the fill nozzle provided with your PCP air rifle to the hose of the pump. Make sure the air bleed valve is tightened.
2. Grab the handle with your hands and place your feet on the foot plate of the pump.
3. Start pumping slowly by lifting up as far as possible and then pushing down the handle. Continue pumping until you reach your desired pressure level in the air cylinder of your PCP air rifle.
4. When you have finished pumping loosen the air bleed valve of the pump so that the air trapped in the hose is discharged. Then disconnect the hose from the air cylinder of the PCP air rifle.

WARNINGS AND MAINTENANCE

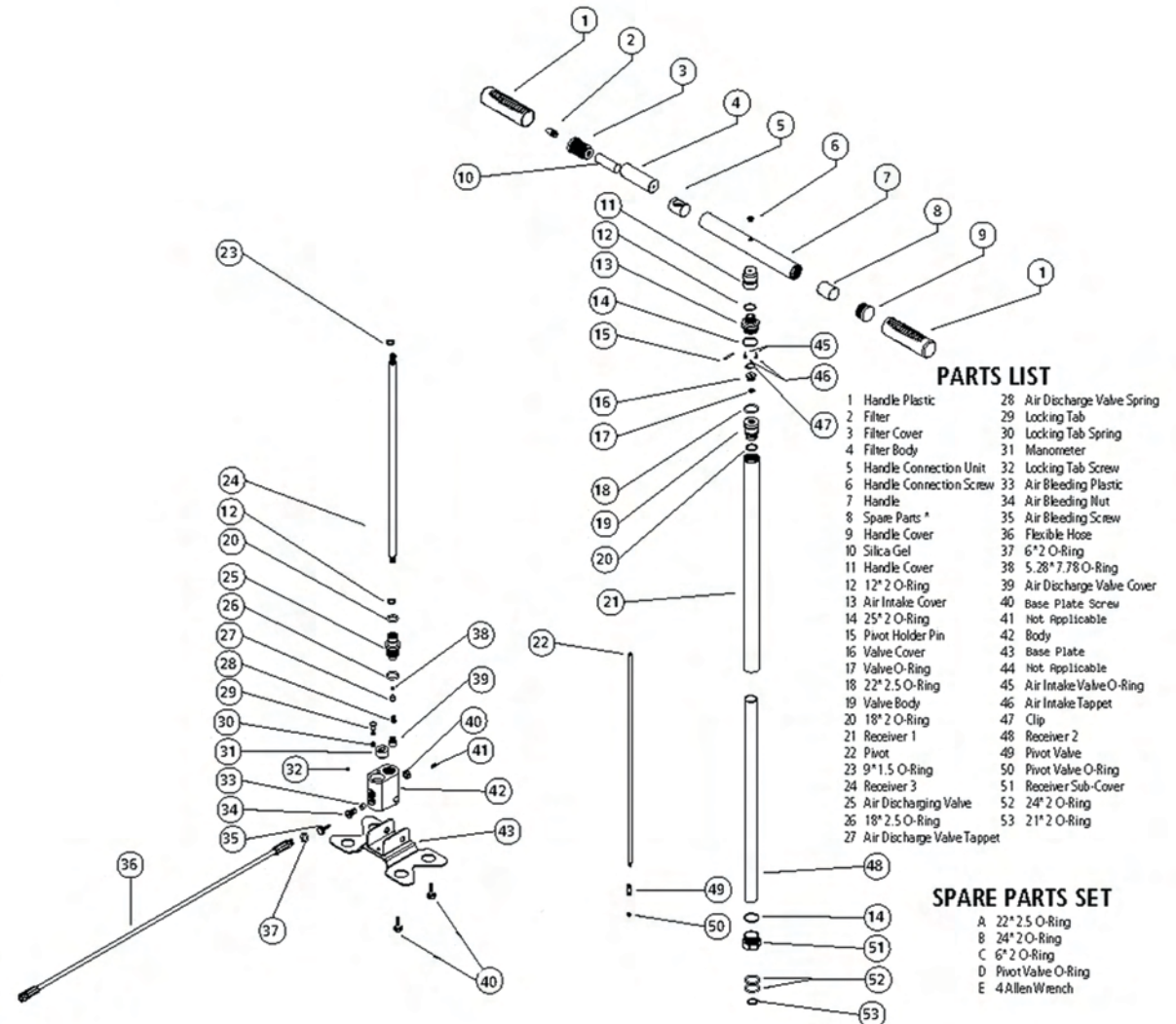
1. Use this pump for filling your PCP air rifle only. Do not use it for other purposes. If possible use your pump in low moisture environments. This is very beneficial for the performance of your pump and PCP air rifle.
2. Do not pump continuously for more than 5 minutes, and leave the pump for 15 minutes after each pumping period. Loosen the air bleed valve of the pump so that the excessive heat in the bottom part of the pump is removed. This will also enable the removal of moisture. Most of the PCP air rifles can be filled within 5 minutes, so that all you need is a single pumping session. We recommend leaving the pump to cool after each 50 strokes of the pump or when the pump is heated. Otherwise the lifetime of the seals and the o-rings in the pump may decrease.
3. Pump slowly and deliberately. Stop at the top and bottom of each stroke (1-2 seconds) to let the air flow through the tiny holes inside the pump. The pump works in both directions, though it feels hardest on the down stroke, so make the upstroke count too. Do not fail to go all the way to the end of each stroke, as most of the work is accomplished in the last 2-3 cm of pump rod travel.
4. Use your body weight when it becomes very hard to pump. It will become harder to pump after 100 bar pressure. Make sure you use your body weight beyond this pressure level.

ASSEMBLY STEPS



5. It is recommended that the pump is occasionally cleaned and lubricated. Lubrication should be applied on a small scale onto the pump rod (part no. 48) and then pumped a few strokes. **Only silicon grease should be used as a lubricant. Any other type, petroleum lubricant or grease should never be used.**
6. Make sure you loosen the air bleed valve before you disconnect your PCP air rifle. Otherwise the seals and O-rings in the fill nozzle of your PCP air rifle may get damaged. This process also enables the removal of moisture.
7. The recommended maximum pressure of this pump is 230 Bar. However **do not exceed the manufacturer's recommended maximum filling pressure of the air cylinder of the PCP air rifle.** For example, maximum fill pressure of the air cylinders of Webley Venom air rifles is 200 bar and this level should never be exceeded. It may result in serious injury to you or bystanders if the air cylinders are filled above the recommended maximum pressure levels. Also never fill any cylinder which is not in good condition or damaged.
8. Always use the pump on firm, non slip surfaces. Also take

9. Do not kink or flatten the hose when using the pump. Never use any pump with the manometer removed.
10. Do not use this pump if you have a physical illness or condition that could be affected by using this pump.
11. The silica gel particles contained in the moisture filter should be replaced depending on the climatic conditions that the pump is located in. Replacing the silica gel particles every 2-3 months is compulsory in high humid and warm climates. This can be done every 4-5 months in low humid climates. The entire moisture filter should be replaced after prolonged use.
12. Never attempt to modify or make any changes in the pump. Use it in its original structure out of the factory. **Always observe the instruction manual.**



PARTS LIST

1 Handle Plastic	28 Air Discharge Valve Spring
2 Filter	29 Locking Tab
3 Filter Cover	30 Locking Tab Spring
4 Filter Body	31 Manometer
5 Handle Connection Unit	32 Locking Tab Screw
6 Handle Connection Screw	33 Air Bleeding Plastic
7 Handle	34 Air Bleeding Nut
8 Spare Parts *	35 Air Bleeding Screw
9 Handle Cover	36 Flexible Hose
10 Silica Gel	37 6*2 O-Ring
11 Handle Cover	38 5.28*7.78 O-Ring
12 12* 2 O-Ring	39 Air Discharge Valve Cover
13 Air Intake Cover	40 Base Plate Screw
14 25* 2 O-Ring	41 Not Applicable
15 Pivot Holder Pin	42 Body
16 Valve Cover	43 Base Plate
17 Valve O-Ring	44 Not Applicable
18 22* 2.5 O-Ring	45 Air Intake Valve O-Ring
19 Valve Body	46 Air Intake Tappet
20 18* 2 O-Ring	47 Clip
21 Receiver 1	48 Receiver 2
22 Pivot	49 Pivot Valve
23 9*1.5 O-Ring	50 Pivot Valve O-Ring
24 Receiver 3	51 Receiver Sub-Cover
25 Air Discharging Valve	52 24* 2 O-Ring
26 18* 2.5 O-Ring	53 21* 2 O-Ring
27 Air Discharge Valve Tappet	

SPARE PARTS SET

- A 22* 2.5 O-Ring
- B 24* 2 O-Ring
- C 6*2 O-Ring
- D Pivot Valve O-Ring
- E 4 Allen Wrench