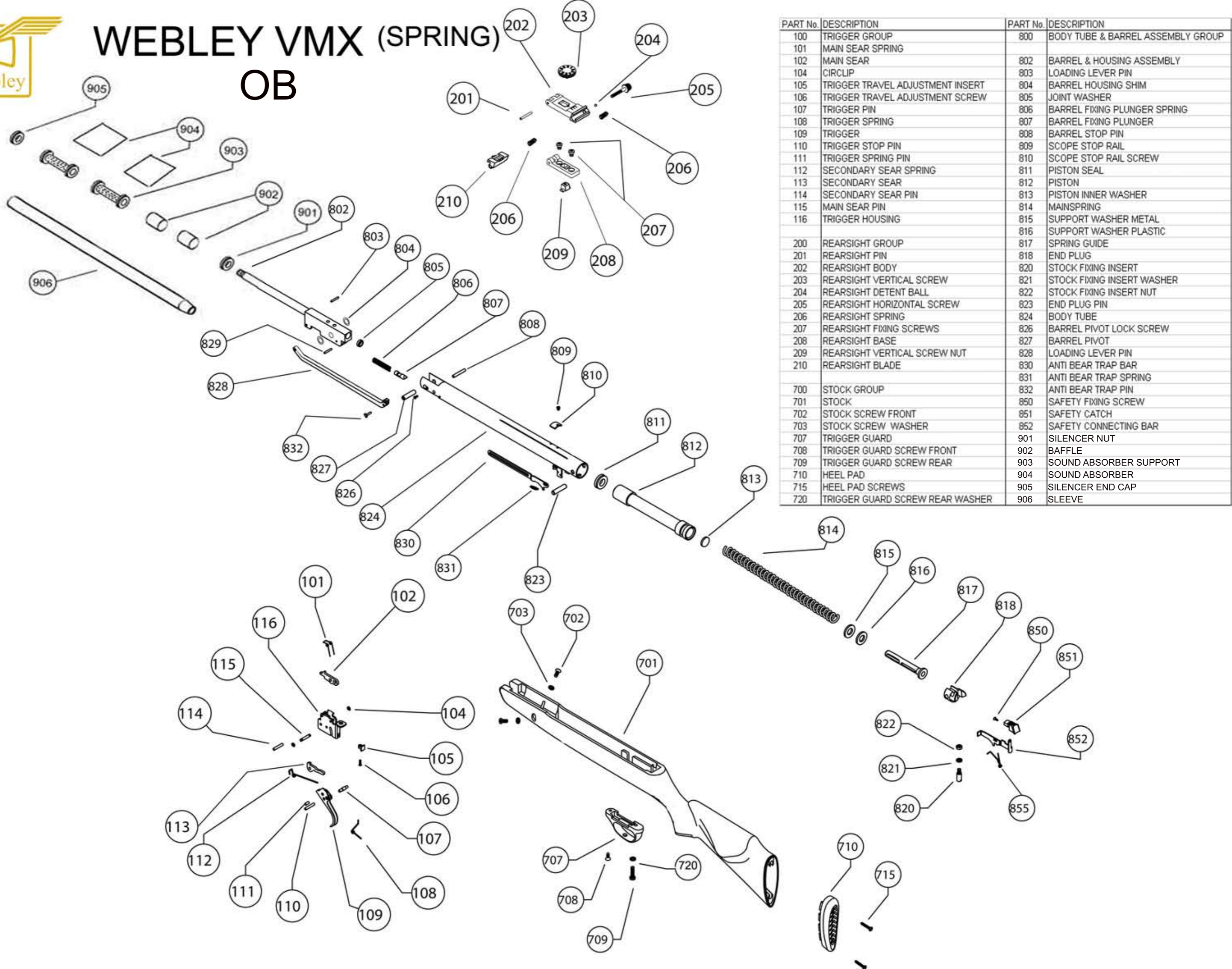




WEBLEY VMX (SPRING)

OB



PART No.	DESCRIPTION	PART No.	DESCRIPTION
100	TRIGGER GROUP	800	BODY TUBE & BARREL ASSEMBLY GROUP
101	MAIN SEAR SPRING		
102	MAIN SEAR	802	BARREL & HOUSING ASSEMBLY
104	CIRCLIP	803	LOADING LEVER PIN
105	TRIGGER TRAVEL ADJUSTMENT INSERT	804	BARREL HOUSING SHIM
106	TRIGGER TRAVEL ADJUSTMENT SCREW	805	JOINT WASHER
107	TRIGGER PIN	806	BARREL FIXING PLUNGER SPRING
108	TRIGGER SPRING	807	BARREL FIXING PLUNGER
109	TRIGGER	808	BARREL STOP PIN
110	TRIGGER STOP PIN	809	SCOPE STOP RAIL
111	TRIGGER SPRING PIN	810	SCOPE STOP RAIL SCREW
112	SECONDARY SEAR SPRING	811	PISTON SEAL
113	SECONDARY SEAR	812	PISTON
114	SECONDARY SEAR PIN	813	PISTON INNER WASHER
115	MAIN SEAR PIN	814	MAINSRING
116	TRIGGER HOUSING	815	SUPPORT WASHER METAL
		816	SUPPORT WASHER PLASTIC
200	REARSIGHT GROUP	817	SPRING GUIDE
201	REARSIGHT PIN	818	END PLUG
202	REARSIGHT BODY	820	STOCK FIXING INSERT
203	REARSIGHT VERTICAL SCREW	821	STOCK FIXING INSERT WASHER
204	REARSIGHT DETENT BALL	822	STOCK FIXING INSERT NUT
205	REARSIGHT HORIZONTAL SCREW	823	END PLUG PIN
206	REARSIGHT SPRING	824	BODY TUBE
207	REARSIGHT FIXING SCREWS	826	BARREL PIVOT LOCK SCREW
208	REARSIGHT BASE	827	BARREL PIVOT
209	REARSIGHT VERTICAL SCREW NUT	828	LOADING LEVER PIN
210	REARSIGHT BLADE	830	ANTI BEAR TRAP BAR
		831	ANTI BEAR TRAP SPRING
700	STOCK GROUP	832	ANTI BEAR TRAP PIN
701	STOCK	850	SAFETY FIXING SCREW
702	STOCK SCREW FRONT	851	SAFETY CATCH
703	STOCK SCREW WASHER	852	SAFETY CONNECTING BAR
707	TRIGGER GUARD	901	SILENCER NUT
708	TRIGGER GUARD SCREW FRONT	902	BAFFLE
709	TRIGGER GUARD SCREW REAR	903	SOUND ABSORBER SUPPORT
710	HEEL PAD	904	SOUND ABSORBER
715	HEEL PAD SCREWS	905	SILENCER END CAP
720	TRIGGER GUARD SCREW REAR WASHER	906	SLEEVE