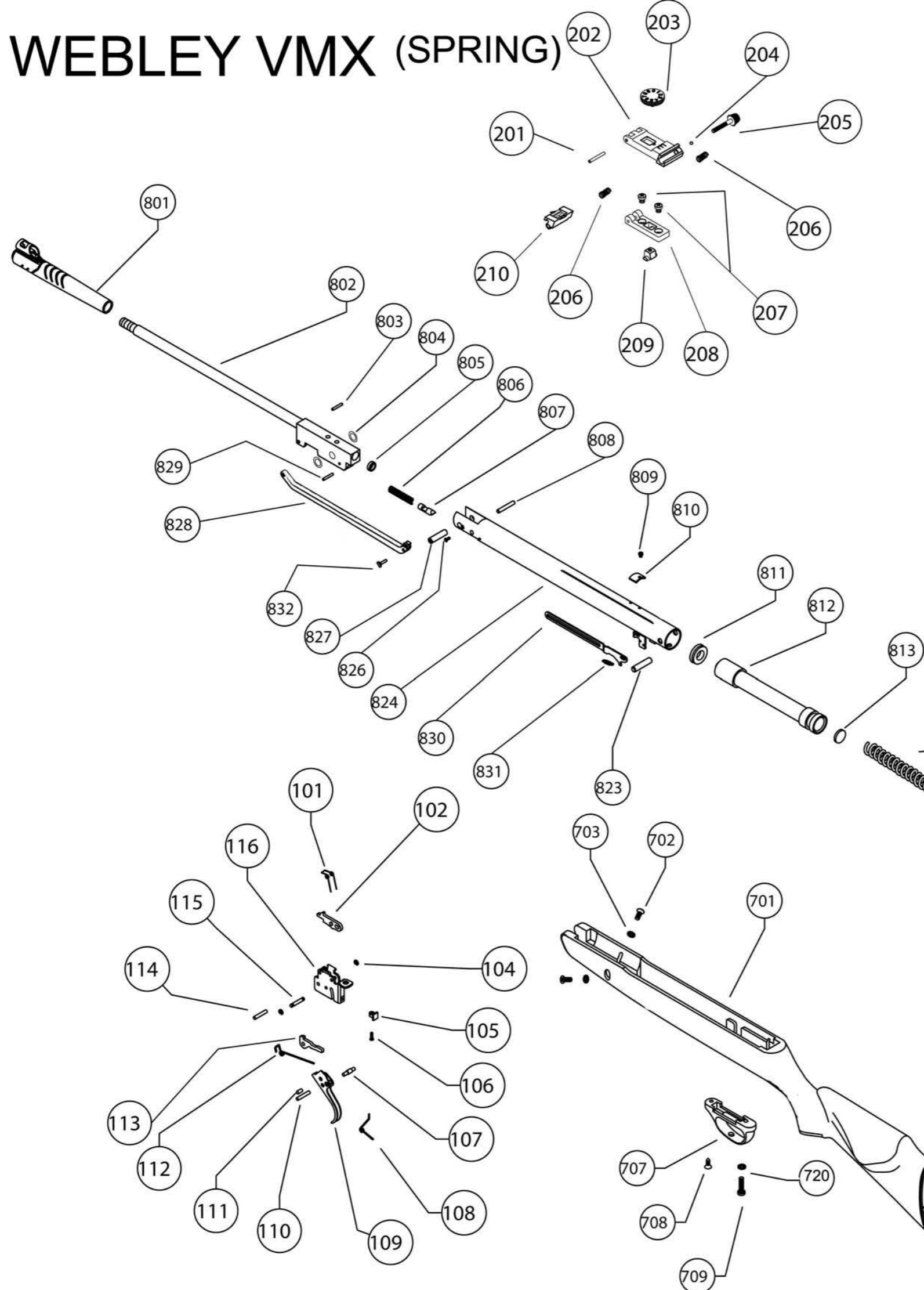




WEBLEY VMX (SPRING)



PART No.	DESCRIPTION	PART No.	DESCRIPTION
100	TRIGGER GROUP	800	BODY TUBE & BARREL ASSEMBLY GROUP
101	MAIN SEAR SPRING	801	FORESIGHT ASSEMBLY
102	MAIN SEAR	802	BARREL & HOUSING ASSEMBLY
104	CIRCLIP	803	LOADING LEVER PIN
105	TRIGGER TRAVEL ADJUSTMENT INSERT	804	BARREL HOUSING SHIM
106	TRIGGER TRAVEL ADJUSTMENT SCREW	805	JOINT WASHER
107	TRIGGER PIN	806	BARREL FIXING PLUNGER SPRING
108	TRIGGER SPRING	807	BARREL FIXING PLUNGER
109	TRIGGER	808	BARREL STOP PIN
110	TRIGGER STOP PIN	809	SCOPE STOP RAIL
111	TRIGGER SPRING PIN	810	SCOPE STOP RAIL SCREW
112	SECONDARY SEAR SPRING	811	PISTON SEAL
113	SECONDARY SEAR	812	PISTON
114	SECONDARY SEAR PIN	813	PISTON INNER WASHER
115	MAIN SEAR PIN	814	MAINSRING
116	TRIGGER HOUSING	815	SUPPORT WASHER METAL
		816	SUPPORT WASHER PLASTIC
		817	SPRING GUIDE
		818	END PLUG
200	REARSIGHT GROUP	820	STOCK FIXING INSERT
201	REARSIGHT PIN	821	STOCK FIXING INSERT WASHER
202	REARSIGHT BODY	822	STOCK FIXING INSERT NUT
203	REARSIGHT VERTICAL SCREW	823	END PLUG PIN
204	REARSIGHT DETENT BALL	824	BODY TUBE
205	REARSIGHT HORIZONTAL SCREW	826	BARREL PIVOT LOCK SCREW
206	REARSIGHT SPRING	827	BARREL PIVOT
207	REARSIGHT FIXING SCREWS	828	LOADING LEVER PIN
208	REARSIGHT BASE	830	ANTI BEAR TRAP BAR
209	REARSIGHT VERTICAL SCREW NUT	831	ANTI BEAR TRAP SPRING
210	REARSIGHT BLADE	832	ANTI BEAR TRAP PIN
		850	SAFETY FIXING SCREW
700	STOCK GROUP	851	SAFETY CATCH
701	STOCK	852	SAFETY CONNECTING BAR
702	STOCK SCREW FRONT		
703	STOCK SCREW WASHER		
707	TRIGGER GUARD		
708	TRIGGER GUARD SCREW FRONT		
709	TRIGGER GUARD SCREW REAR		
710	HEEL PAD		
715	HEEL PAD SCREWS		
720	TRIGGER GUARD SCREW REAR WASHER		