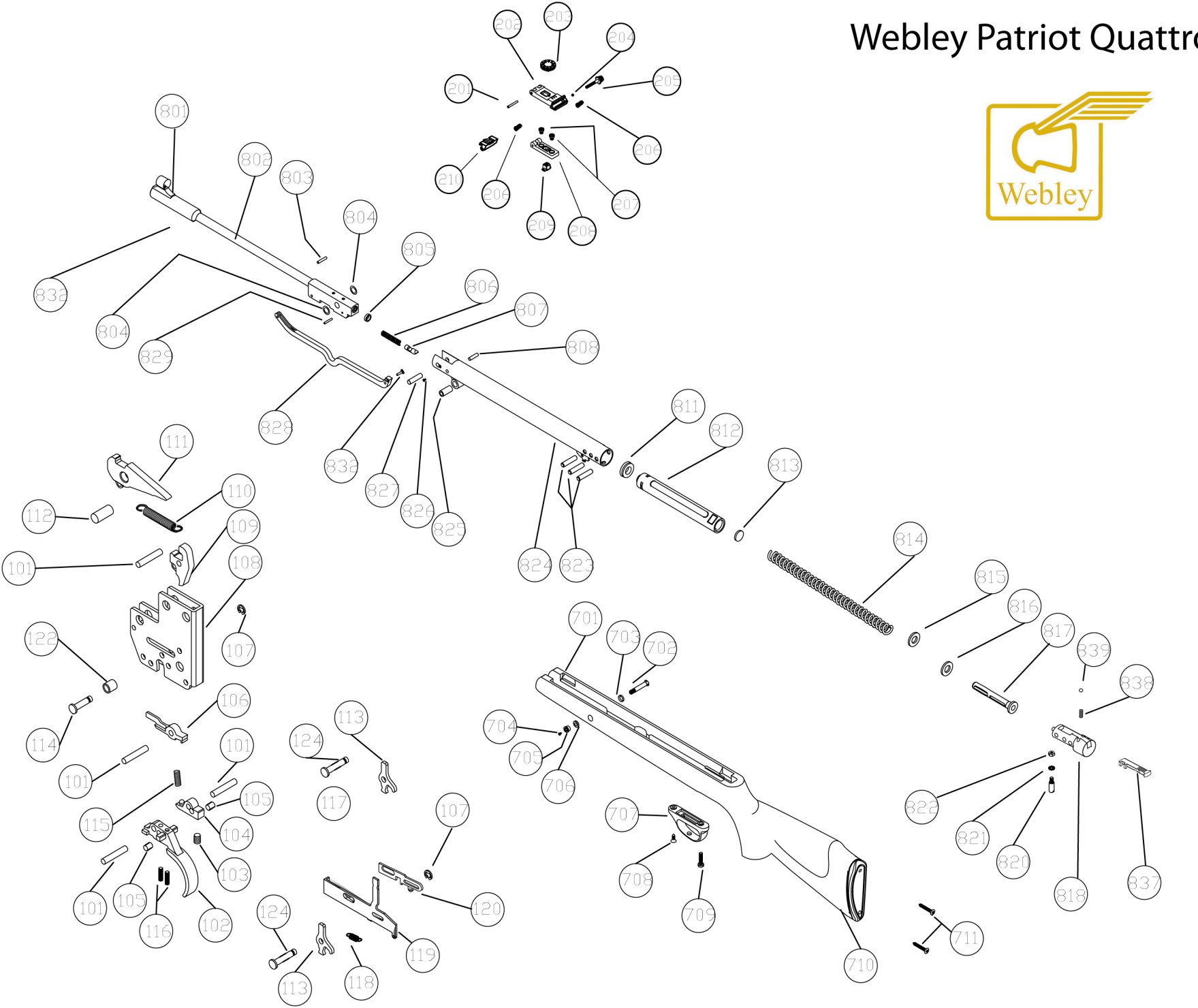


Webley Patriot Quattro



Part no	Description
100	TRIGGER GROUP
101	AXIS PINS
102	TRIGGER
103	TRIGGER LOAD SCREW
104	TRIGGER LOAD LEVER
105	TRIGGER LOAD SCREW TENSIONER
106	AUXILIARY SEAR
107	SAFETY TOGGLE CIRCLIP
108	TRIGGER HOUSING
109	SECONDARY SEAR
110	MAIN SEAR SPRING
111	MAIN SEAR
112	MAIN SEAR FULCRUM
113	SAFETY TOGGLE
114	TRIGGER STOP PIN
115	TRIGGER LOAD SPRING
116	TRIGGER POSITION SCREW
118	SAFETY RETURN SPRING
119	SAFETY LINK
120	SAFETY CONNECTOR
122	TRIGGER STOP
123	SAFETY TOGGLE AXIS
124	SAFETY LINK PIN
200	REARSIGHT GROUP
201	REARSIGHT PIN
202	REARSIGHT BODY
203	REARSIGHT VERTICAL SCREW
204	REARSIGHT DETENT BALL
205	REARSIGHT HORIZONTAL SCREW
206	REARSIGHT SPRING
207	REARSIGHT FIXING SCREWS
208	REARSIGHT SUB-PLASTI
209	REARSIGHT VERTICAL SCREW NUT
210	REARSIGHT BLADE
700	STOCK GROUP
701	STOCK
702	STOCK BOLT FRONT
703	STOCK BOLT FRONT WASHER
704	STOCK NUT FRONT LOCK SCREW
705	STOCK NUT FRONT
706	STOCK NUT FRONT WASHER
707	TRIGGER GUARD
708	TRIGGER GUARD SCREW FRONT
709	TRIGGER GUARD SCREW REAR
800	BODY TUBE & BARREL ASSEMBLY
801	FORESIGHT ASSEMBLY
802	BARREL & HOUSING ASSEMBLY
803	LOADING LEVER PIN
804	BARREL HOUSING SHIM
805	JOINT WASHER
806	BARREL FIXING PLUNGER SPRING
807	BARREL FIXING PLUNGER
808	BARREL STOP PIN
811	PISTON SEAL
812	PISTON
813	PISTON INNER WASHER
814	MAINSRING
815	SUPPORT WASHER METAL
816	SUPPORT WASHER PLASTIC
817	SPRING GUIDE
818	END PLUG
820	STOCK FIXING INSERT
821	STOCK FIXING INSERT WASHER
822	STOCK FIXING INSERT NUT
823	END PLUG PIN
824	BODY TUBE
825	STOCK BUSH
826	BARREL PIVOT LOCK SCREW
827	BARREL PIVOT
828	LOADING LEVER
829	PLUNGER RETAINING PIN
837	SAFETY
838	SAFETY DETENT SPRING
839	SAFETY DETENT BALL