

# Webley Semi Auto 810 /820 Warranty

## **FIREARMS SAFETY**

At Webley & Scott, we believe that safe firearms **handling** is the most important consideration of anyone **who** uses firearms and ammunition. Please take a **few minutes** to thoroughly read and understand this **instruction** manual.

You should completely understand this manual **before** you practice loading, unloading and firing with **live** ammunition.

Remember, shooting is the safest sport in the world as long as simple safety precautions are always adhered to - firearms safety does depend on **you!**



## INTERCHANGEABLE CHOKES

All Webley & Scott semi-auto shotguns come with interchangeable internal chokes and a choke wrench. You have the ability to modify your pattern density by installing interchangeable chokes of different constrictions. See Fig.15.

Your barrel is threaded for your chokes. For internal tubes, insert the wrench into the slotted portion of the choke and turn counterclockwise to remove it from the barrel and turn clockwise to install it.

### WARNING

When installing a choke in your barrel, make sure that the choke is completely screwed down tight in the barrel. Never discharge your shotgun without a choke installed as this may damage the barrel. Chokes may become loose after extended firing and should be checked frequently for tightness.

### !STEEL SHOT WARNING

Webley and Scott semi-automatic shotguns are proofed for steel shot. Constriction of less than 0.5mm choke must be used when shot exceeds 4.00mm ie: Cylinder, Skeet and Improved Cylinder are acceptable.

## CHOKE TUBE MARKINGS

Your internal interchangeable chokes are marked with notches at the end of the tubes to indicate the choke type for that particular one, as well as relevant letters on them. Please refer



to the chart below to identify which chokes are supplied with your shotgun. Chokes shown in the chart that are not supplied with your shotgun are available from the Webley & Scott dealer.

### Multi-Choke Tube Markings and Constrictions

Name	Constriction		Notches	Markings
	Inch	mm		
Cylinder	.000"	0.00		C
Skeet	.005"	0.13		S
Improved Cylinder	.010"	0.25		IC
Modified	.020"	0.51		M
Improved Modified	.025"	0.64		IM
Full	.035"	0.89	-	F
X Full	.040"	1.00	-	XF

### DISASSEMBLY

Before disassembling your shotgun, be absolutely certain that it is unloaded. As an added precaution, visually check the chamber and the magazine tube for any cartridges. Put the



safety in the ON position. Remove the magazine tube cap by unscrewing it counter clockwise, Fig.16.

Remove the forend by sliding it away from the receiver and off the end of the magazine tube, Fig.17.

Remove the barrel by pulling the barrel out of the receiver assembly and out from around the magazine tube, Fig.18.

Remove the gas piston, Fig.19.

You can remove the bolt by moving the action bar rearward under spring tension with your left hand, until the bolt moves enough for you to align it with the cutout hole in the bolt that receives the handle. At this point, the bolt handle can be freely removed from the bolt. See Fig.20. Remember that the bolt is still under tension from the spring.

After you remove the bolt, the entire action bar/bolt assembly and action bar sleeve can be removed from the shotgun by pulling the action bar off the end of the magazine tube. See Fig.21.

Remove the magazine spring from around the magazine tube, Fig.22.

The action bar, action bar sleeve and bolt assembly can be separated for cleaning. Lift the bolt off the action bar by simply pulling it up and off the bar, Fig.23.

Separate the action bar from the action bar sleeve by pulling the action bar up and away from the action bar sleeve as shown in Fig.24.



The trigger assembly may be removed from the receiver for further cleaning of the receiver and trigger group. It is recommended that a thorough cleaning be performed every 300 rounds.

To remove the trigger assembly, first remove the two trigger assembly retaining pins by using a punch to drive the pins out of the receiver, Fig.25.

Once the retaining pins are removed, the entire trigger assembly can be removed from the receiver by pulling down on the trigger guard, Fig.26. No further disassembly of the trigger assembly is recommended for anyone other than a trained gunsmith.

Note: When reinstalling the trigger assembly, the hammer must be in its cocked position. To cock the hammer, pull down on the hammer with your thumb until it locks into place as shown in Fig.27.

### **Magazine Capacity Plug**

Your shotgun is supplied with a plug to limit the capacity of cartridges in the magazine tube. Your country's regulations may not require this plug to be used so it may be removed.

When the barrel has been removed from the shotgun, insert a large bladed screwdriver into the hole in the magazine spring retainer, Fig.28.

While pushing down on the spring retainer with the screwdriver, and rotating in a clockwise direction approximately 1/4 turn, the retainer will move to a position where the cutout in the retainer



will align with a detent in the magazine tube, enabling the retainer to come out of the magazine tube. Be very careful at this point, as the retainer is holding a spring inside of the magazine tube and the spring is under tension. Slowly pull back on the screwdriver to allow the magazine spring to push the retainer and capacity plug out of the magazine tube, Fig.29. Remove the plastic plug from the tube and reassemble the retainer plug back into the magazine tube. Be careful, as the spring will be under tension. Align the cut-out in the retainer plug with the detent on the end of the magazine tube, push the plug into the tube and rotate it in counter clockwise direction approximately 1/4 turn, and slowly allow the retainer to return to its stop. This will lock the retainer plug firmly in the magazine tube.

Note: Your shotgun has now been completely disassembled. No further disassembly of your shotgun is necessary for routine maintenance and cleaning. Only the Webley & Scott Service Centre or a Webley & Scott Approved Service Centre should perform any further disassembly.

An exploded view of the disassembled shotgun is shown in Fig.30.

Note: Photographs shown in this manual may not be from the exact model that you have but the instructions will apply to the model you have.

## **AMMUNITION**

Each Webley & Scott semi-auto shotgun is clearly marked with the gauge and maximum length cartridge that may be used in that particular model.



Gauge & Chamber	Cartridges which can be used
12/76 – 12Ga 3"	12/70 – 12Ga 2 3/4" 12/76 – 12Ga 3"
12/89 – 12Ga 3 1/2"	12/76 – 12Ga 3" 12/89 – 12Ga 3 1/2"
20/76 – 20Ga 3"	20/70 – 20Ga 2 3/4" 20/76 – 20Ga 3"
28/70 – 28Ga 2 3/4"	28/70 – 28Ga 2 3/4"

Do not use a cartridge that is longer than the maximum cartridge length that is stamped on the barrel.

The use of reloaded or substandard commercially produced ammunition will affect your warranty coverage and could result in severe injury to the shooter or others nearby. See the enclosed warranty registration card for any exclusions and limitations the Webley & Scott Lifetime warranty.

## **WARNING**

The accidental loading and discharge of cartridges of the wrong gauge in your shotgun can result in damage to your gun and possible injury or death to you or others. To be safe at all times, carry only the proper gauge ammunition with you for the gun you are using.

## **CLEANING AND STORAGE**

After extended shooting sessions, it will be necessary to clean your shotgun. Semi-auto shotguns require more cleaning than any other type of shotgun, because of their gas operated construction.



Periodically, clean the bore with proper cleaning equipment. Oil all metal surfaces lightly with high quality gun oil. Never pour oil into any inside mechanisms.

If you will be storing your shotgun for long periods of time, apply gun grease to all metal parts, store the shotgun in a dry, and secure area. When you clean the shotgun, make sure the muzzle is not plugged with any heavy grease that would cause a barrel obstruction.





## SEMI-AUTOMATIC SHOTGUN PART LIST

1	Recoil Pad Screw	29	Safety Button Detent Pin
2	Recoil Pad	30	Safety Button Spring
3	Stock	31	Safety Spring Pin
3a	Stock Inner Frame	32	Trigger
3b	Stock Sling Swivel Stud	33	Trigger Sear
4	Stock Screw	34	Trigger Pin
5	Stock Screw Washer	35	Trigger Spring
5a	Washer Stopper	36	Trigger Sear Spring
6	Receiver	37	Trigger Sear Pin
7	Bolt Recoil Pad	38	Carrier
8	Magazine Tube	39	Carrier Dog
9	Latch	40	Carrier Dog Pin
10	Latch Spring	41	Carrier Dog Follower
11	Latch Pin	42	Carrier Dog Spring
12	Latch Pin Detent Spring	43	Hammer
13	Action Release Button	44	Hammer Pin
16	Magazine Follower	45	Hammer Plunger
17	Magazine Spring	46	Hammer Spring
18	Magazine Spring Retainer	47	Action Bar
19	Forend	48	Regulator Block
20	Magazine Cap	48a	Regulator Spring
21	Sling Swivel Stud	48b	Regulator Follower
22	Sling Swivel Washer	48c	Regulator Nut
23	Sling Swivel Nut	50	Piston
24	Trigger Plate	51	Piston Seal
25	Trigger Plate Pin Bushing	53	Action Breech
26	Trigger Plate Pin Spring	54	Breech Bolt
27	Trigger Plate Pin	55	Firing Pin
28	Safety Button	56	Firing Pin Spring

## **THIS MANUAL CONTAINS**

1. Important warnings, which should be read and understood before using this firearm. **SAFE GUN HANDLING IS YOUR PERSONAL RESPONSIBILITY AT ALL TIMES.** Disregarding warnings in this manual may result in injury or death to you and others and damage to property.
2. Directions and procedures for handling loading, firing and unloading.
3. Instructions for care, cleaning, repair, and service of this shotgun.

This instruction and safety manual is designed to help you in learning how to properly use and care for your Webley & Scott Semi-Auto shotgun. Only when you are certain you have fully familiarised yourself with the function of your firearm should you practice loading, unloading and firing with live rounds of ammunition.

This instruction manual should always accompany this firearm, and be transferred with it upon change of ownership. Should you ever need to replace it, this manual is available FREE from Webley & Scott or can be downloaded from the website [www.webleyandscott.co.uk](http://www.webleyandscott.co.uk)

## **DISCLAIMER OF LIABILITY**

Webley & Scott shall not be responsible for product malfunctioning or for physical injury, death or damage to property resulting from either intentional or accidental discharge of this firearm, its criminal or negligent use, improper or careless handling, unauthorised modifications or alteration, use of defective or improper or hand-loaded or (replaced) ammunition,



57	Firing Pin Retaining Pin
58	Extractor
59	Extractor Plunger
60	Extractor Spring
61	Extractor Pin
62	Bolt
63	Locking Block
64	Barrel
64a	Ventilated Rib
64b	Front Sight
64d	Barrel Collar (Gas Cylinder)
64e	Barrel Rear Part
65	Mobile Choke
66	Magazine Capacity Plug

For further information contact:

Webley & Scott  
Universe House  
Key Industrial Park  
Willenhall  
West Midlands  
WV13 3YA  
England

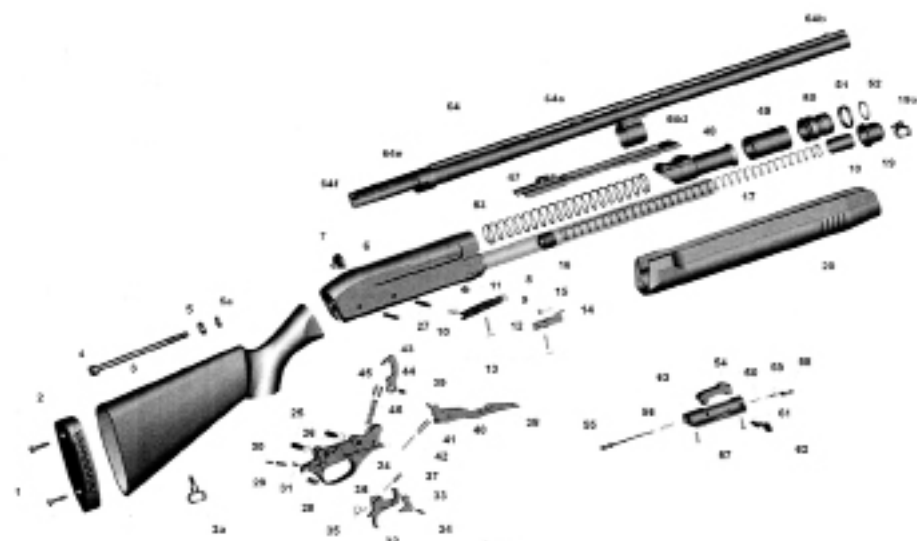
Tel: +44 (0)1902 722144

Fax: +44 (0)1902 722880

E-mail: [sales@webleyandscott.co.uk](mailto:sales@webleyandscott.co.uk)

Website: [www.webleyandscott.co.uk](http://www.webleyandscott.co.uk)





### MODEL 358 SEMI AUTO PART LIST

No	Part Name	No	Part Name	No	Part Name
1	Recoil Pad Screw (X2)	24	Trigger Plate	46	Hammer Spring
2	Recoil Pad	25	Trigger Plate Pin Bushing (X2)	47	Action Bar
3	Stock (Synthetic)	26	Trigger Plate Pin Detent Spring (X2)	48	Action Bar Sleeve
3a	Stock Inner Frame	27	Trigger Plate Pin (X2)	49	Action Retarder
4	Stock Screw	28	Safety Button	50	Platon
5	Stock Screw Washer	29	Safety Button Detent Pin	51	Platon Seal
5a	Washer Stopper	30	Safety Button Spring	52	O ring
6	Receiver (Matte)	31	Safety Spring Retaining Pin	53	Action Spring
7	Bolt Recoil Pad	32	Trigger	54	Breach Bolt
8	Magazine Tube	33	Trigger Seal	55	Firing Pin
9	Feed Latch	34	Trigger Pin	56	Firing Pin Spring
10	Feed Latch Spring	35	Trigger Spring	57	Firing Pin Retaining Pin
11	Action Release Button	36	Trigger Sear Detent Spring	58	Extractor
12	Feed Latch Pin	37	Trigger Sear Detent Pin	59	Extractor Plunger
13	Feed Latch Pin Detent Spring	38	Carrier	60	Extractor Spring
14	Interceptor Latch	39	Carrier Dog	61	Extractor Pin
15	Interceptor Latch Spring	40	Carrier Dog Pin	62	Bolt Handle
16	Magazine Follower	41	Carrier Dog Follower	63	Locking Block
17	Magazine Spring	42	Carrier Dog Follower Spring	64	Barrel Assembly (Matte)
18	Magazine Spring Retainer	43	Hammer	65	Internal Mobile Choke Tube
19	Magazine Cap	44	Hammer Pin	66	Magazine Capacity Plug
20	Forend (Synthetic)	45	Hammer Plunger		

or from its use for purposes or subjection to treatment for which it was not designed. For your safety, use only original high quality commercially manufactured ammunition in good condition that is appropriate to the calibre/gauge of your gun. Webley & Scott shall not be responsible for the product or its results as a consequence of the use of defective, improper or reloaded ammunition.

## **! WARNING - LEAD EXPOSURE**

Discharging firearms in poorly ventilated areas, cleaning firearms, or handling ammunition may result in exposure to lead and other substances that may cause birth defects, reproductive harm, and other serious physical injury. Have adequate ventilation at all times. Wash your hands thoroughly after exposure. Shooting or cleaning guns may expose you to lead.

## **! WARNING:**

Prior to removing this gun from its packaging, and prior to loading and firing, carefully and thoroughly read the entire instruction manual which gives advice on the gun's proper handling and functioning. However, your safety and that of others (including your family) depends on your responsible compliance with that advice. If unfamiliar with firearms seek supervised instruction.

**FIREARMS SAFETY IS YOUR RESPONSIBILITY.**



## ! GENERAL SAFETY WARNINGS

1. Careless and improper handling of this gun could result in unintended discharge causing injury, death or property damage. Safety must be the first and constant consideration when handling a firearm and ammunition.
2. This shotgun was designed to function properly in its original condition. Alterations can make it unsafe. Do not alter any part or add or replace parts.
3. Shotguns should only be carried with the action open and chambers empty to prevent accidental discharge.
4. **Always handle and treat your gun as if it were loaded** so you never fire it accidentally when you think it is unloaded. Never take anyone's word it is unloaded. Always check it yourself with your fingers off the trigger and the gun pointed in a safe direction.
5. Never place your finger inside the trigger guard unless you intend to fire.
6. Water, snow, mud, excessive lubricating oil or grease or any other material can obstruct the barrel of your gun. Always check the barrel of your firearm for obstruction before loading and firing. Clean a fouled gun immediately to ensure its correct and safe function.
7. **Keep the gun's muzzle pointed in a safe direction at all times.** Never let the muzzle of a firearm point at any part of your body, another person or at anything you do not intend to shoot. Always be certain of your target before firing.
8. **UNLOAD ALL FIREARMS WHEN NOT IN USE. NEVER STORE A LOADED FIREARM.** Firearms and ammunition should be safely stored separately so that they are inaccessible to children or unauthorised users.



9. Always make sure your gun is not loaded before cleaning, storing, or handing it to another person.
10. Always wear safety glasses while shooting to protect your eyes from injury by gun powder, gas, lubricant, dirt or metallic particles, carbon residue, sparks or other debris.
11. Always wear ear protection when shooting, especially on a range. Without ear protection, the noise from your gun, and other guns close to you, could leave a "ringing" in the ears for some time after firing. Repeated exposure to shooting noise could result in permanent hearing loss. Never climb a tree, fence or wall while carrying a loaded firearm.
12. Don't shoot at a hard surface, or at water. A pellet may ricochet and travel in unpredictable directions to strike you or an object you cannot see.
13. Firearms and alcohol don't mix. Never drink alcoholic beverages or take drugs before or during shooting, as this constitutes criminal disregard for your safety and that of others. Never use a gun while you are taking medication unless you have checked with your doctor to ensure your fitness to handle your gun safely.
14. If you have any doubts about your ability to handle or use this shotgun safely, seek supervised instruction.
15. **Horseplay and high jinks have no place around firearms. Guns can't think - you can!**
16. **Remember, safety is your responsibility, be a safe shooter.**
17. FOLLOW THE LAW: Obey all local and national laws regarding storage, shooting and transporting your firearm.



## UNPACKING YOUR SHOTGUN

When you remove your Webley & Scott shotgun from its box, you will see the 2 major components, the barrel and the shotgun (Fig.1). Your semi auto shotgun should come with a choke tube installed in the barrel along with a choke tube wrench and a magazine capacity plug installed into the magazine or separately located. You should also have an instruction manual in the package.

## MANUAL SAFETY

Your Webley & Scott shotgun is equipped with a manual trigger block safety button located in the trigger guard, just behind the trigger. When the button is pushed from the left side of the receiver, protruding to the right side, the trigger is blocked and the safety is on as shown in Fig.2. (The directions are opposite for left hand shotguns.)

When the button is pushed from the right side of the receiver, protruding to the left side, you will see a red circle on the safety button indicating the safety is off and the shotgun is in an unsafe condition, ready to fire if the trigger is pulled, as shown in Fig.3.

## WARNING

The manual safety of your shotgun should always be on except for when you are ready to pull the trigger and fire the shotgun. This will help insure that no accidental discharges take place. You should only have the safety off, and be able to see the red line on the left side of the receiver, when you are ready to shoot.





## DIRECTIONS FOR ASSEMBLY

Unscrew the magazine cap from the front of the forend in a counter clockwise direction as shown in Fig.4.

Remove the forend by sliding it forward, off the shotgun as shown in Fig.5. Note that the piston should remain in place.

While holding the bolt with your right hand, carefully align the barrel with the receiver and the end of the magazine tube, as shown in Fig.6 and begin to pull back on the bolt as you insert the barrel into the receiver.

Continue pulling the bolt back while inserting the barrel until the bolt is in its rear locked position and the barrel is completely seated in the receiver. The barrel should mate to the receiver at this point in the assembly as shown in Fig.7.

Slide the forend over the magazine tube assembly as shown in Fig.8, bringing it to rest against the receiver.

There are two small tabs in the forend that will align with the small cutout in the front end of the receiver. The forend is in its proper position when it is seated completely against and around the receiver as shown in Fig.9.

Reattach the magazine cap to the magazine tube by rotating it in a clockwise direction until it is firmly screwed down against the forend as shown in Fig.10.

The shotgun is now completely assembled. To close the bolt/action, depress the action release button as shown in Fig.11. Check, to be sure no fingers or other objects are located near the bolt as it closes. Put the safety in the "ON" position!



## CAUTION

Do not load your shotgun until you are ready to use it and unload it immediately after you have finished shooting. Always carry your shotgun with the safety engaged. The user of this shotgun, and all firearms, should never depend on the manual safety, or any other mechanical device, to make a firearm completely safe. It is your responsibility to always keep the muzzle of your firearm pointed in a safe direction.

## LOADING

When loading, keep the safety on at all times and keep the muzzle pointed in a safe direction.

To load the magazine, turn the shotgun upside down. Insert your cartridge and push it into the magazine tube until it is held in place in the tube by the cartridge latch. As you insert each cartridge you will hear a "click" that tells you the latch has closed behind the cartridge and you can now load the next one. See Fig.12.

Note: Your shotgun is equipped with a plug that limits the number of cartridges that your magazine tube will hold to 2 cartridges. Removal and installing of the plug is shown in this manual in the DISASSEMBLY section.

To load a cartridge into the chamber, pull back on the bolt handle. As you pull the bolt handle fully rearward, a cartridge will come out of the magazine tube and the cartridge carrier will raise the cartridge aligning it with the chamber. Release the bolt handle and the forward travel of the bolt will chamber the first



round. See Fig.13. Never allow your fingers or another object to come in contact with the trigger while loading.

Your Webley & Scott shotgun is now loaded and ready to fire if the safety is moved to the OFF position.

## **FIRING**

To fire the shotgun, hold the shotgun firmly with both hands and the proper placement of the stock to your shoulder and cheek. Aim at your target. Press the safety button into the OFF position and pull the trigger. The system that operates your semi-auto will fire the cartridge in the chamber, eject the fired case and load the next cartridge into the chamber, each time that you pull the trigger. Be prepared to either fire your next shot or engage the safety in the ON position after firing.

## **UNLOADING**

Before unloading, make sure the safety is in the ON position. And keep the muzzle pointed in a safe direction. Never allow your fingers or another object to come in contact with the trigger during unloading.

Pull the bolt completely backwards and this will eject any cartridge that is remaining in the chamber. Close and open the bolt repeatedly to chamber and then eject all cartridges that may be remaining in the magazine tube or chamber (Fig.14).

Visually check to make sure that no cartridges may be remaining in the chamber or magazine tube and depress the bolt release button to close the action/bolt.



