



Device User Manual

Device : IR hub
Model number : SI-19002



Product description



1. Power : 5V/1A
2. Send distance : Max 18m
3. IR frequency : 38KHz
4. WiFi : 2.4GHz
5. Operation temperature : -10 ~ 45°C



Connection

1. Download RAPLINK App

RAPLINK is available for both iOS and Android OS.

Search the name 'RAPLINK' in App Store or Google Play to download the App.



[click here to download](#)



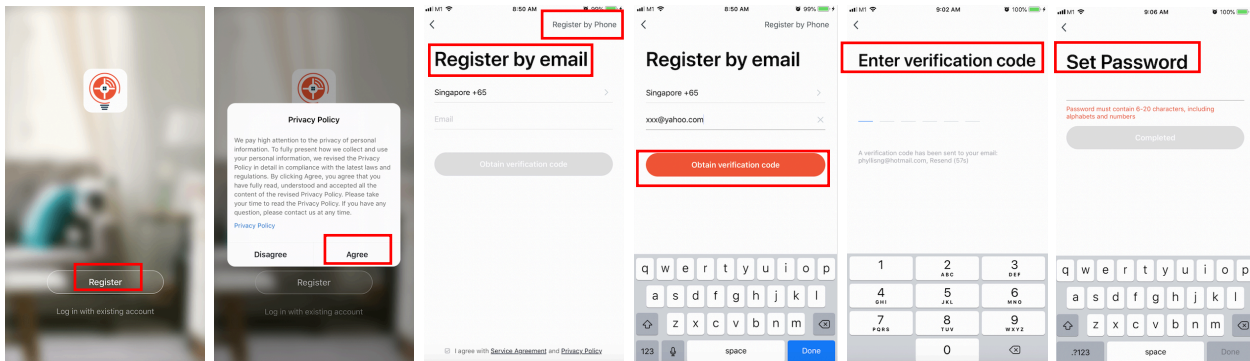
[click here to download](#)



2. Register an account

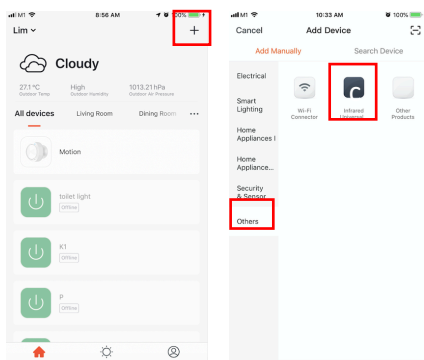
Register a RAPLINK App account if you don't have.

Tap to enter registration page to set up a RAPLINK account.



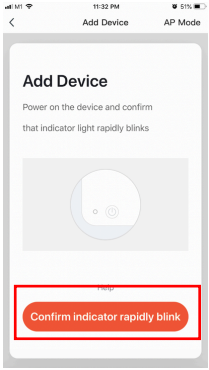
3. Add/connect device

Step 1 : Open the RAPLINK App, click "+" or "Add Device". Then select "Others" and "Infrared Universal".

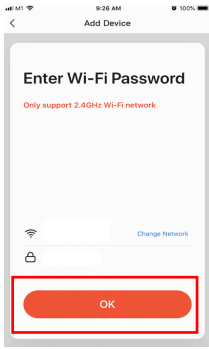




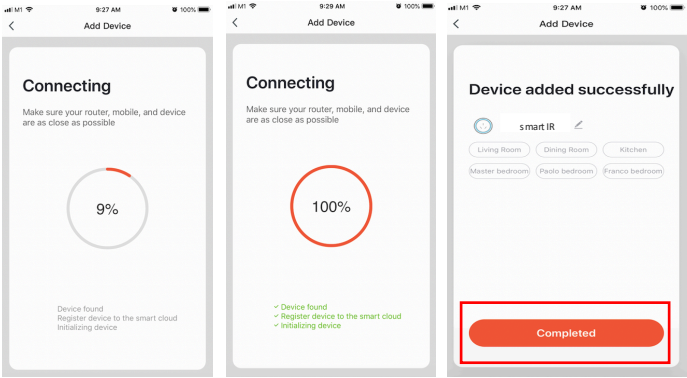
Step 2 : Press "A" button for 5 seconds to pair with the RAPLINK App. The light at "A" button will flash rapidly. Tap the "Confirm indicator rapidly blink".



Step 3 : Select the WiFi under which device is working. Enter WiFi password and tap "Ok" to enter network connection process.



Step 4 : Tap "Completed" to complete the connection process.



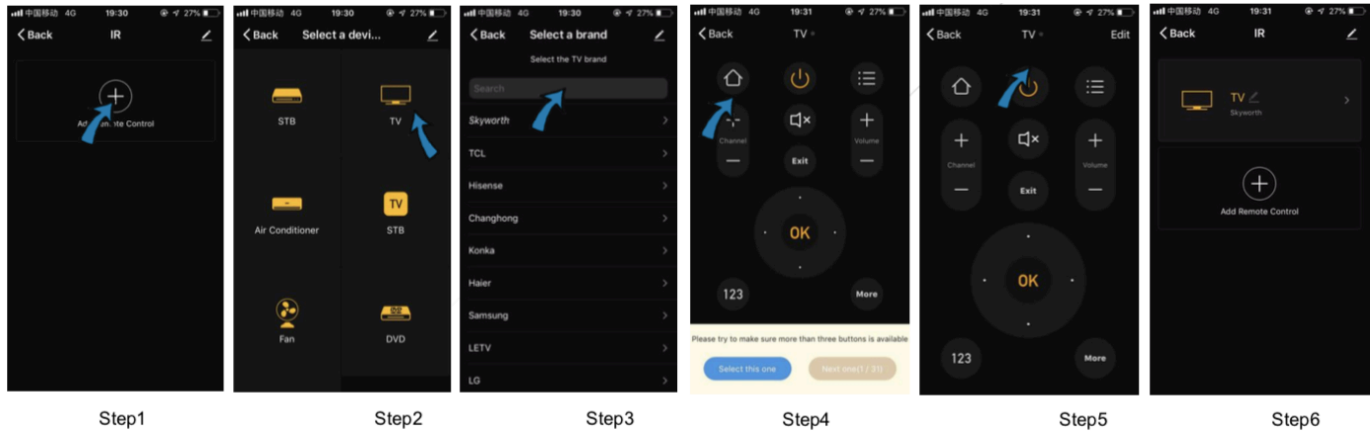


Control device

After successfully configuring the device, the smart IR device will shown on the home page.

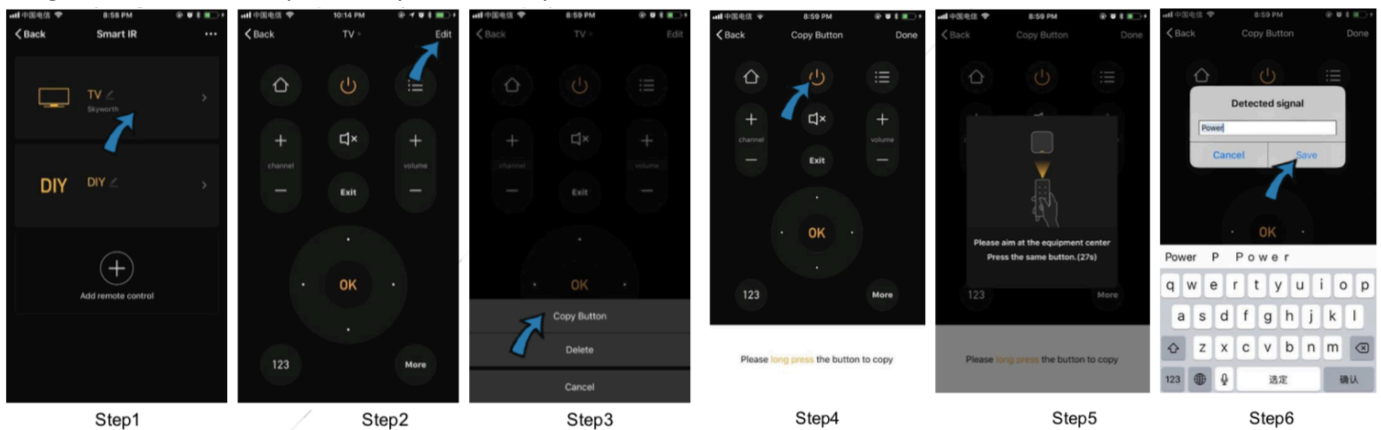
For a remote control for an existing electric device that can be found in the existing brand library.

Using a television with a power key as an example

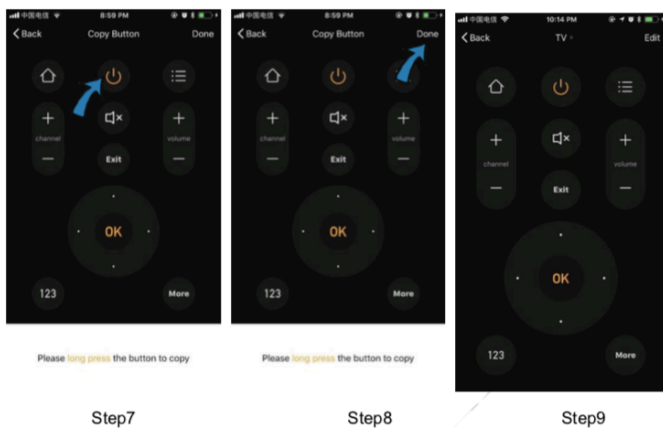


For a remote control for an electric device that cannot be found in the existing brand library.

Using a television with a power key as an example



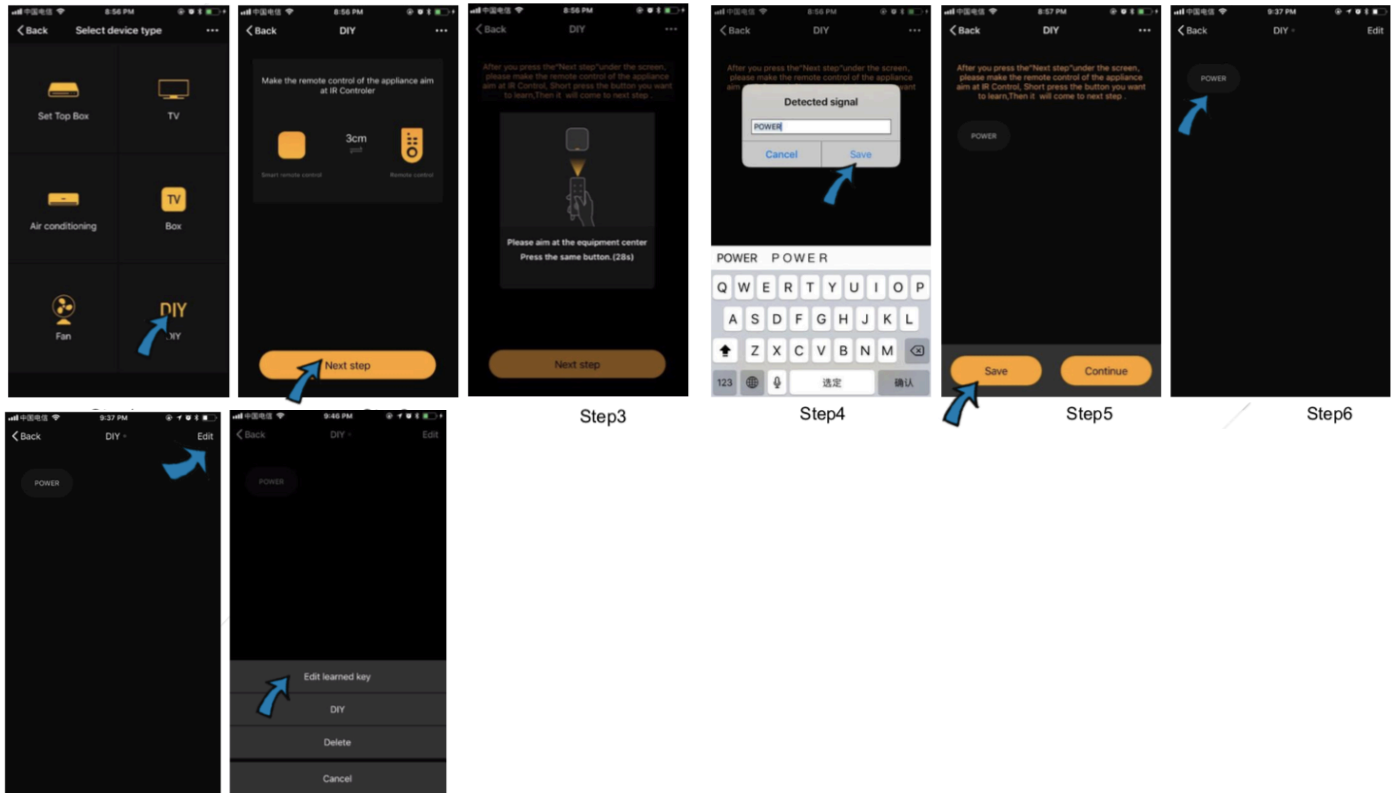
Press the key on the factory remote control in Step 5 and the app will proceed automatically to the next step.



After a key is copied successfully as in Step 6, press the matching key (which is the power key in this example) in the app to test if the key is working properly. After finishing the copying of a key, the user can choose to copy another one or click "Finish" at the top right corner to save data and exit.



For an electric device that cannot be found in the existing brand library.



To change or add a key, click "Edit" at the top

Notes:

1. The system supports signal learning at 38kHz carrier frequency. If you find the universal remote control unable to receive commands from an electric device, it may be that the carrier frequency of the electric device does not match and is unable to study commands of the electric device.
2. To ensure that the universal remote control can receive commands without disruption while study is deployed, please press keys on the device remote control without holding them down and sending signals to the universal

FAQ

Q. Unable to use the IR hub to control an electric device.

A. Please check the following first.

1. Remote control network in good condition (click any key on the remote control panel in the app and see if the indicator light on the remote control starts flashing. If flashes, the system is working properly.)
2. There is no object blocking the line between the IR hub and the electric device and the device is within a range of 8m.
3. The factory remote control of the device is IR based (cover the top of the remote control with hand or any object and press any key. If the device does not respond, the remote control is IR based; otherwise it is Bluetooth or RF and cannot be replaced by an IR based remote control.)

If no error is identified after all steps above are completed, try the "reset" key to initiate study mode. If the device remains unresponsive, please send us the model number of your device, preferably with a picture of its remote

Q. How to link Google Home to the smart IR hub?

A. The smart IR hub has to be configured on the RAPLINK App to control electric devices. Configuration has to be completed, and then the corresponding voice app has to be downloaded to set up voice function.



Q. What is the range of the smart IR hub?

A. It can control IR enabled devices within a range of 16m in diameter, which can be expected to cover the living room or bedroom in most homes.

Q. Can the IR hub be linked to several appliances or just one?

A. The IR hub can be link with multiple appliances via RAPLINK app.

Q. Does it works with WiFi only?

A. It works entirely via WiFi and does not require a network.

Q. Can it go through walls or be used to control A/C unites in upstairs/downstairs rooms?

A. No, IR cannot go through walls.

Q. Which electric appliances does the IR hub support?

A. It supports more than 4000 mainstream brands worldwide, which covers virtually all mainstream brand appliances in the market. In addition, IR study can be control IR-enabled television sets, set up boxes and A/C units.

* Notes :

1. All figures display Android interfaces, IOS versions may vary slightly.
2. Products and software are constantly being updated. Data and software interfaces shown here are for reference purposes only.
3. Further changes made will not be separately disclosed.