

BC 280 FULL COLOR DISPLAY

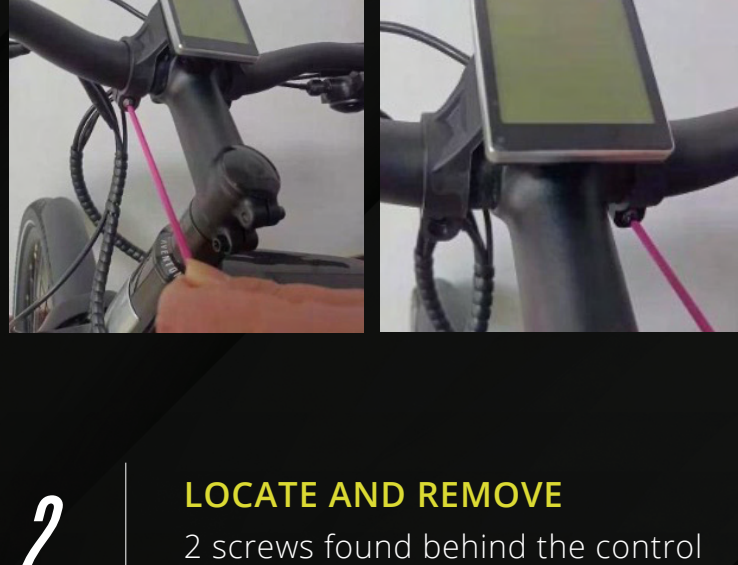
REPLACEMENT INSTRUCTIONS

Thank you for purchasing the Avention Full Color Display for your Avention ebike.

The display comes with a new control pad that also must be installed for the display to work properly. Before you start the installation be sure to turn off your ebike.

Please note that this display does not alter the functionality of your ebike. If you have any questions please contact customer support at info@avention.com.

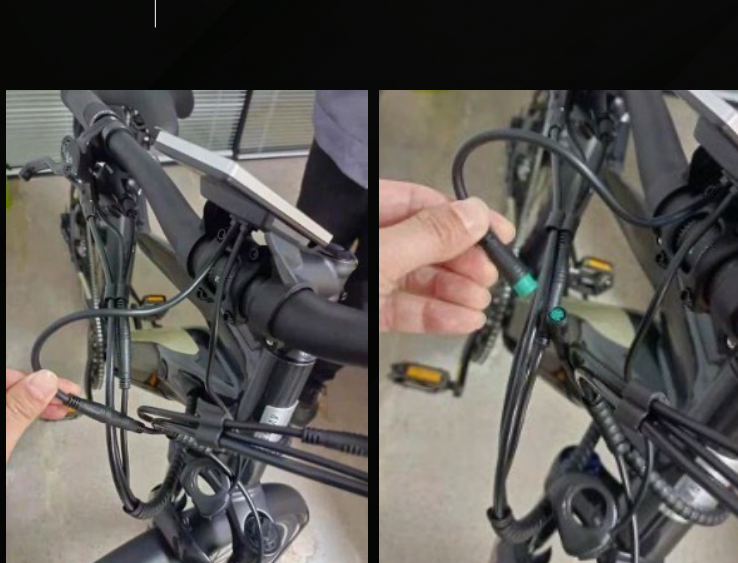
- 1. REMOVE BOTH DISPLAY SCREWS**
found on each side of the stem with a 3mm hex key as shown:



- 2. LOCATE AND REMOVE**
2 screws found behind the control pad with a 3mm hex key.



- 3. DISCONNECT**
the display's main electrical line.

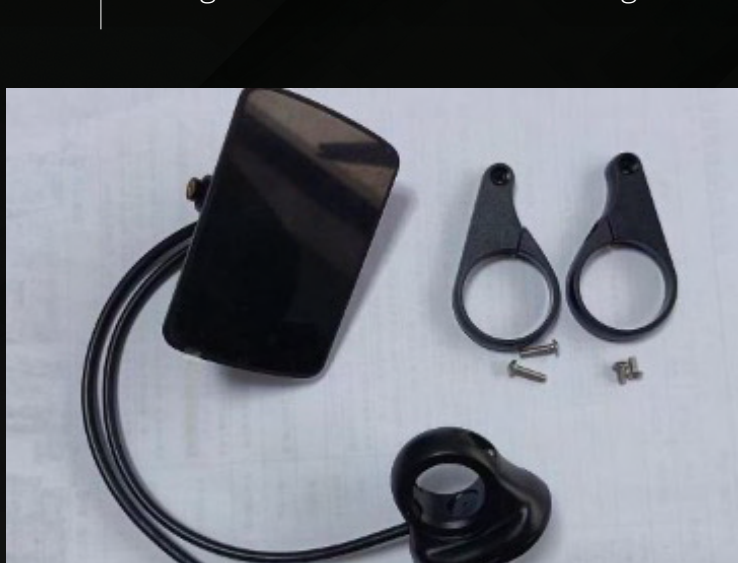


- 4. REMOVE THE DISPLAY & CONTROL PAD**
From the handlebar. We recommend keeping all components in case you need a replacement.

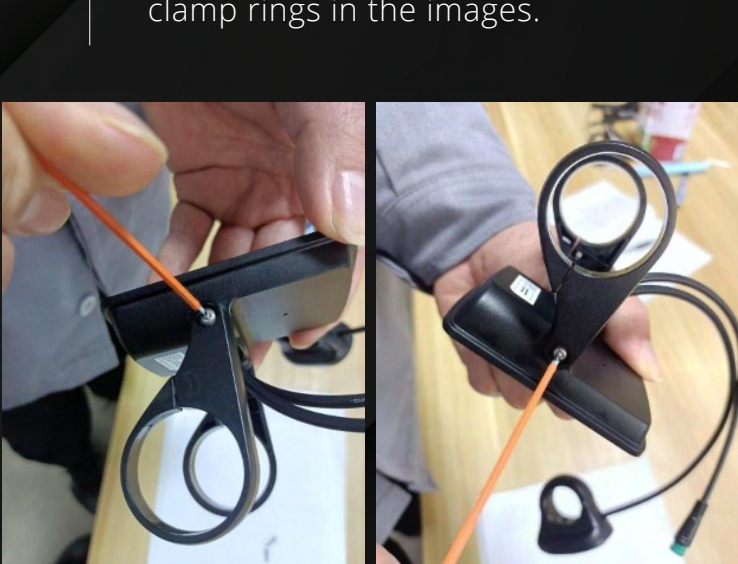
NOTE: If you have a SINCH ebike model, remove the ring insert adapters (2) from the old display clamps and set them aside. You will need them to properly install the new display.



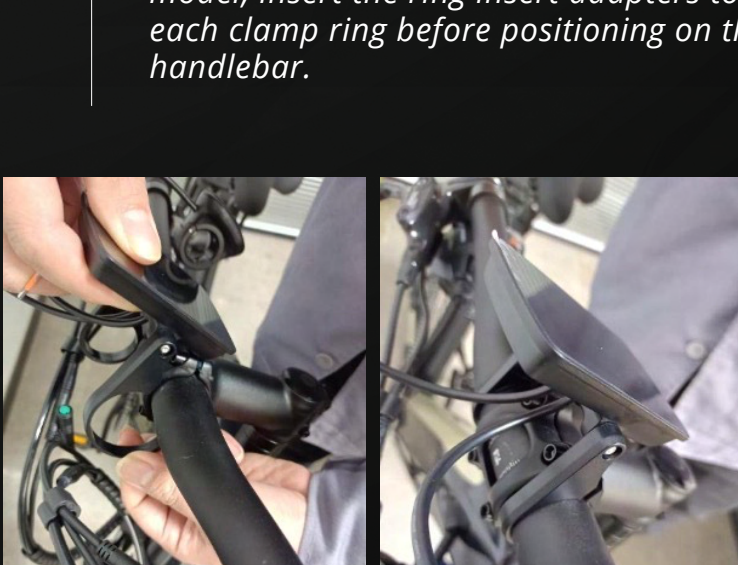
- 5. TAKE OUT**
the new color display components. In the box you will find the color display and control pad, left and right clamp rings, 2 short screws and 2 long screws.



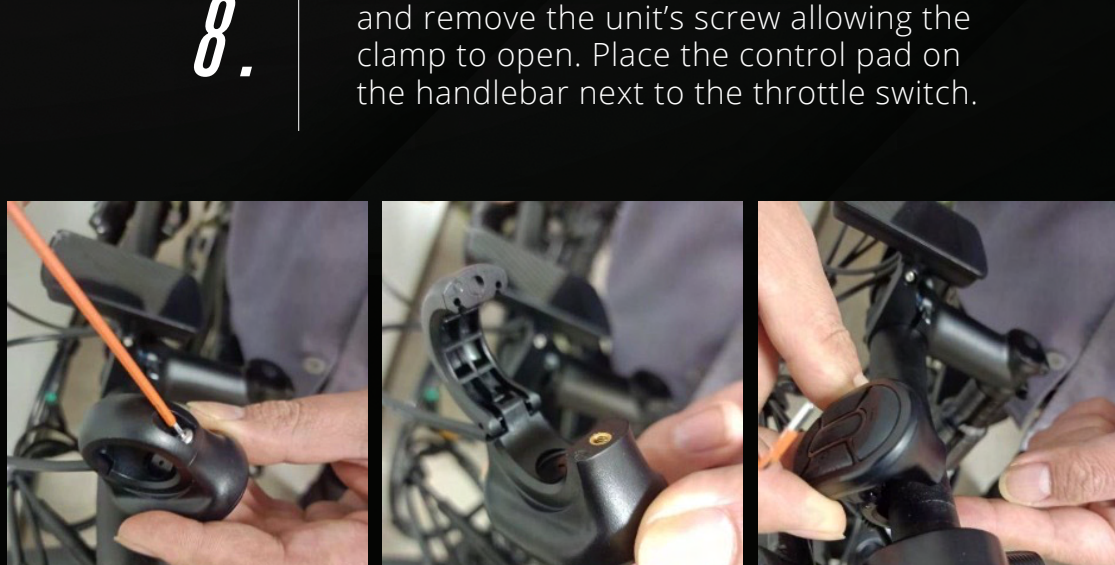
- 6. PLACE BOTH CLAMP RINGS**
on each side of the display and screw in the shorter screws using a 2mm hex key securing them in place. Use images as a reference to ensure the proper position of the clamp rings. *Notice* the placement of the manufacturer sticker relative to the clamp rings in the images.



- 7. OPEN BOTH CLAMP RINGS**
and place the display onto the center of your ebike's handlebar. Clamp rings should be positioned on both sides of the stem. *NOTE: If you have a SINCH ebike model, insert the ring insert adapters to each clamp ring before positioning on the handlebar.*



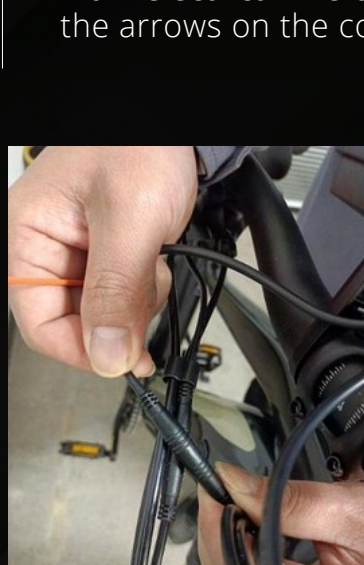
- 8. TAKE THE CONTROL PAD**
and remove the unit's screw allowing the clamp to open. Place the control pad on the handlebar next to the throttle switch.



- 9. USE A 2MM HEX KEY**
to screw and tighten both the color display and control pad to the designed angle and position on the handlebar.



- 10. CONNECT THE DISPLAY'S**
main electrical line by aligning the arrows on the connectors.



- 11. PRESS AND HOLD**
the power button  to turn on the display. You are now ready to ride!

