

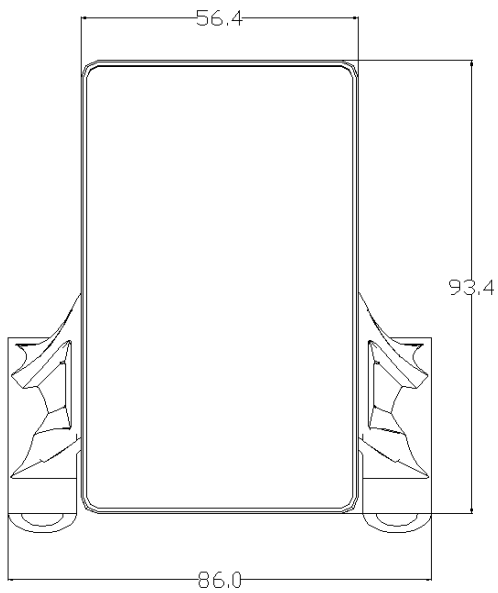
NAKTO ELECTRIC BICYCLE

LCD-M5 display Control Panel Instruction

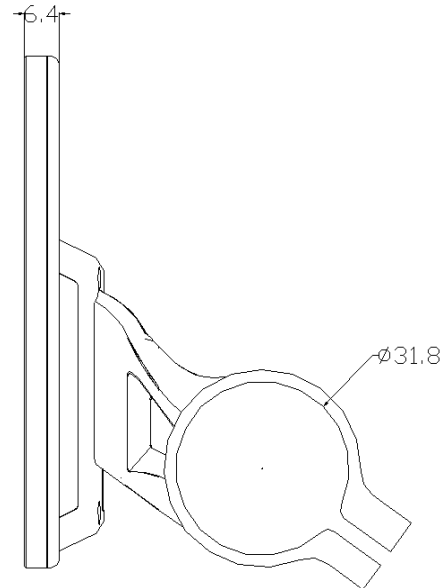


Size (unit: mm)

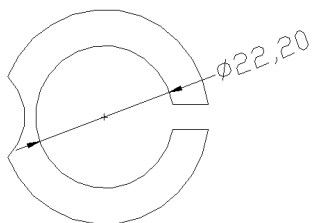
Case: ABS & Meta& glass



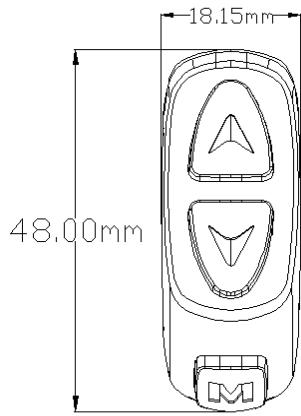
Front



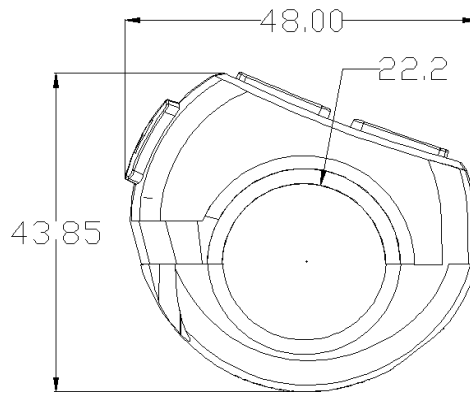
Side



31.8mm Rack



Front switch

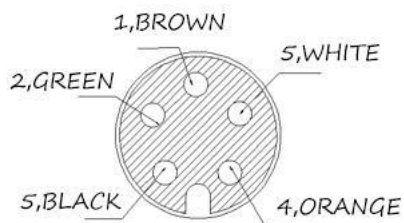


side

Voltage and Wiring

Voltage: DC24V、36V、48V、60V、64V

Wiring



Higo-05M HOLE

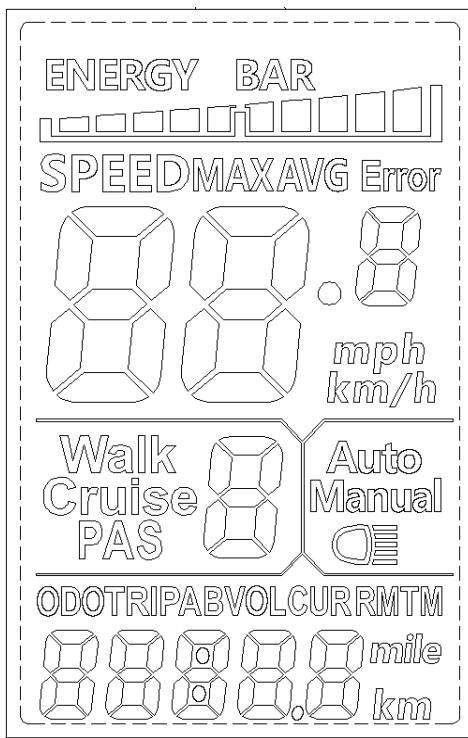
Front LCD side

Front LCD side

No.	Color	Function
1	brown (VCC)	Power source
2	Green (RX)	Data receiving
3	Black (GND)	Ground
4	Orange (K)	Power switch for controller
5	white (TX)	Data Sending

Introduction for display marks:

All displays:



Introduction for display marks:

Auto
Manual

1. Head light



2. Battery Level



3. Multi-function area



Total Range ODO, Single Range TRIP A, Single Range TRIP B, Voltage VOL, Currency CUR, miles left RM; Running time TM

4. Running Model

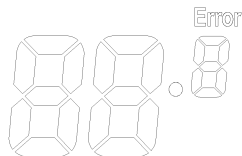


Walk: assistant walking ;Cruise: Cruiser model ;PAS: pedal assistant:0~9 levels

5. Speed display area



Unit MPH, KM/H



6. Bike Status display

Codes :

Code	Meaning	Notes
0	Normal	

1	Stay	
2	Brake	
3	PAS sensor	
4	6KM/H Cruiser	
5	Cruiser	
6	Low voltage	
7	Motor breakdown	
8	Throttle error	
9	Controller error	
10	Signal receiving error	
11	Signal sending error	
12	BMS communication	
13	Head light error	

33	Currency abnormal	
34	Throttle Error	
35	Motor lost one phase	
36	Motor Magnet error	
37	Brake Error	
30	Communication Error	

7. Settings

P01: Background lightness :

1:dark, 2 normal, 3lightest;

P02: Distant unit,

0: KM; 1: MILE;

P03: Battery Voltage:

24V, 36V, 48V, default 36V;

P04: Sleeping time :

0, unlimited; 1-60 minutes;

P05: PAS Level:

0: 3 levels model :

Level 1: 2V,

Level 2: 3V,

Level 3: 4V;

1,: 5 levels model:

Level 1:2V(12MPH),

Level 2: 2.5V(13.1MPH),

Level 3: 3V15.7(MPH),

Level 4: 3.5V(16.3MPH),

Level 5:4V(19MPH);

P06: Wheel diameter:

Unit: inch;

P07: No of magnet steel for speed measurement: 1-100;

P08: Speed limit: Range 0-50 km/h, 50 means no limit

P09: Setting for zero/none zero start: 0: zero start ; 1: none zero start;

P10: Powering Model settings:

0 : PAS(throttle disabled, output power is corresponding to PAS levels)。

1 : Throttle(PAS disabled, output power is controlled by throttle turning, top speed it corresponding to PAS level settings)。

2 : PAS & Throttle(In P9, the setting has to be 1)。

P11: PAS sensitivity: Range 1-24;

P12: PAS starting intensity: Range 0-5;

P13: Magnet steel model for PAS: 5, 8, 12 three models

P14: Currency limit for controller : Range: 1-20A , default 12A

P15: Controller low voltage value

P16: ODO reset (Push and hold up button for 5 sec)

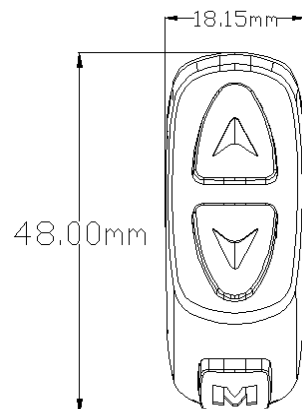
P17: 0: Cruiser disabled, 1: Cruiser abled

P18: Displayed Speed ratio adjust. range: 50%~150%.

P19: 0 effectiveness 0: yes, 1: no

P20: Protocols

Buttons:



The buttons can be used with press or press and hold for 3 seconds

for the function to be activated.

1.



Press to increase/decrease the PAS level to control the top speed

Press and hold both buttons to enter/exit to settings.

2. Press and hold “M” to turn on and off LCD display and Power



3. + Push and hold to change the display of speed unit

Settings

Set/Cancel 4MPH Cruiser, headlight, ODO reset



During the stop of the bike, Push and hold , To enter 4MPH Cruiser model.

Release the button to stop



Press and hold for 2 secs to Switch on/off the headlight.



On P16 status, Press and hold for 5 Sec, ODO reset.

Turn on/ off LCD screen

Press and Hold “M” to Turn on/off the LCD screen.

Switch between Multi-functional displays

Click “M” to switch between function displays



Press and hold + to enter setting:



Use , or to increase or decrease the value, or push and hold ,



or To change the value faster.

Press “M” to switch between settings;



Press and hold + to exit settings and save value, or you can leave it for 8secs and it will exit and save values.