

eunorau



USER MANUAL

Ride EUNORAU, Ride Smile



PART ONE

Table of contents-----2
Diagram of e-bike specific components-----3
Specification-----3

PART TWO

Handle bar assembly-----4
Rack assembly-----5
Front wheel assembly-----6
Fender assenbly-----7
Seat assembly-----8
Pedal assembly-----8

PART THREE

Display instruction-----9
Battery instruction-----11

PART FOUR

Regular adjustment-----12

PART FIVE

Normal instruction-----13
Warranty information -----19

The manual only for assembling Reference, Any questions, please contact the shop where you order.

PART ONE

Diagram of e-bike specific components



Specification

Frame: Aluminum-Alloy

Motor: Front / Rear / Mid

Battery: capacity label on the battery case

Display: check the detailed display manual from your vendor

Sensor: Speed & torque

Derailleur: check the bike

Brake: check the bike

Charger: compatible charger with bike

Charge time: 4-6 hours

Max speed: 25-32km/h(country legally)

Range: 45km-100km base on your battery capacity

Max loading: Folding bike:150kg Step-thru bikes:160kg MTB bikes:170kg

CARGO bikes:200kg

PART TWO

(www.youtube.com/c/EUNORAUEBIKES)

ASSEMBLY INSTRUCTION

STEP 1.
Handle bar



STEP 2.
Rack



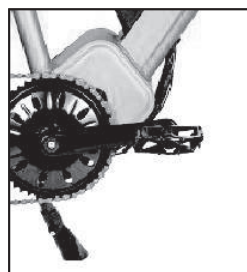
STEP 3 and 4.
Wheel and Fender



STEP 5.
Seat



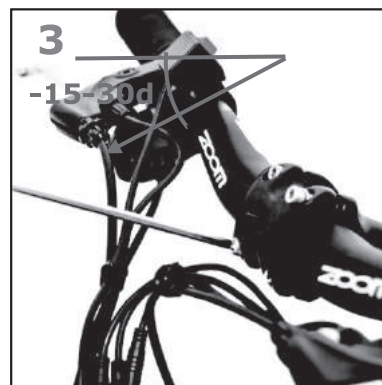
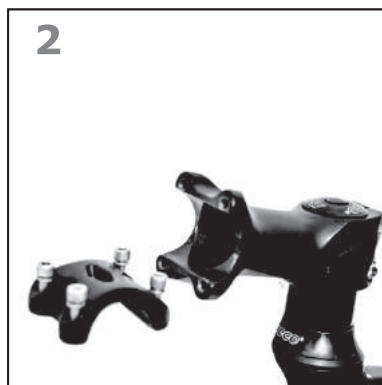
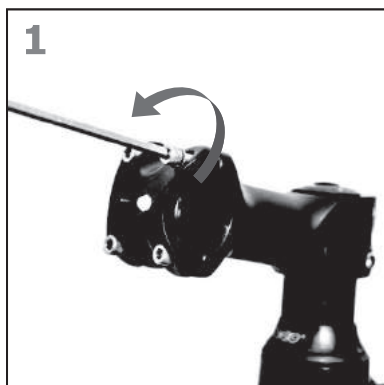
STEP 6.
Pedal



• STEP 1. The Handle Bar Assembly

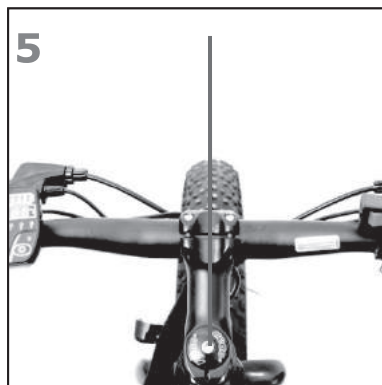
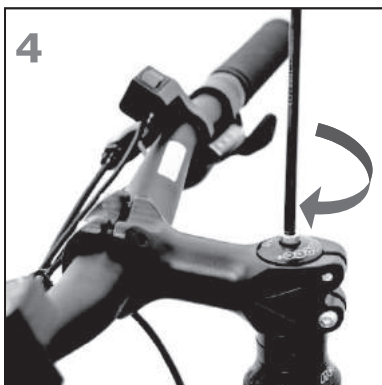
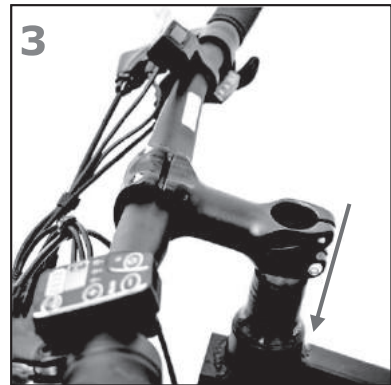
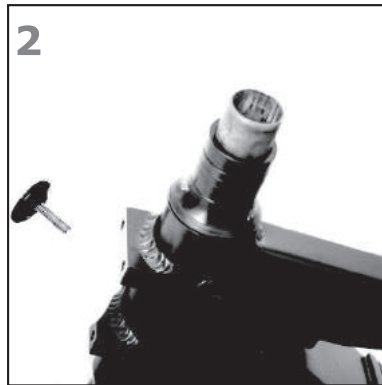
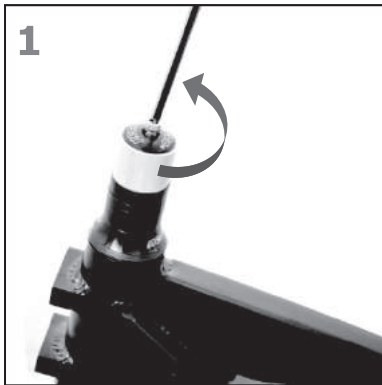
Way A:

1. Turn the clamp bolt anticlockwise by M5 or M4 Allan Wrench.
2. Remove the clamp*1pc and bolts*4pcs
3. Attach the Handle bar and tighten bolts clockwise firmly. Make sure the angle of the brake lever is -15-30degree and the center of the Handel bar is under the clamp.



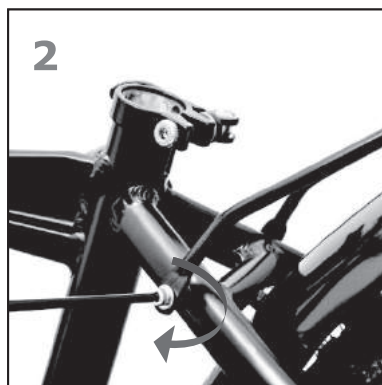
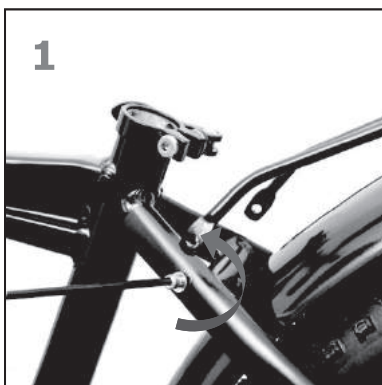
Way B:

1. Turn the bolt of the cover anticlockwise by M5 or M4 Allan wrench
2. Remove the cover with the bolt and the raw space (The raw space not used once removed).
3. Put the stem onto the steer of the fork.
4. Put the cover with the bolt and tighten the bolt clockwise(It is ok to make the fork move freely)
5. Keep the stem direction in the line with the front wheel.
6. Tighten the bolts*2 of the stem firmly.



• STEP 2. The Rack Assembly

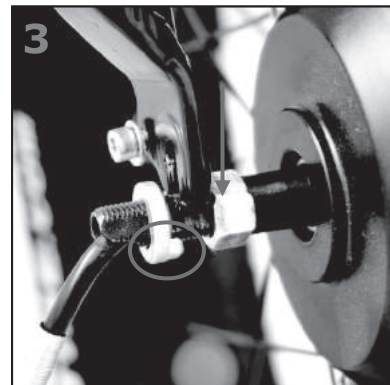
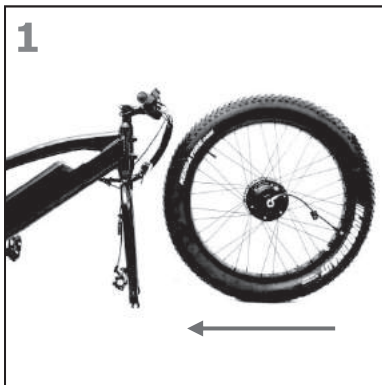
1. Turn the bolt in the both sides anticlockwise and remove them by M4 Allan wrench.
2. Tighten the bolts clockwise firmly.



• STEP 3. The Front Wheel Assembly

Way A: Bolt on Wheel.

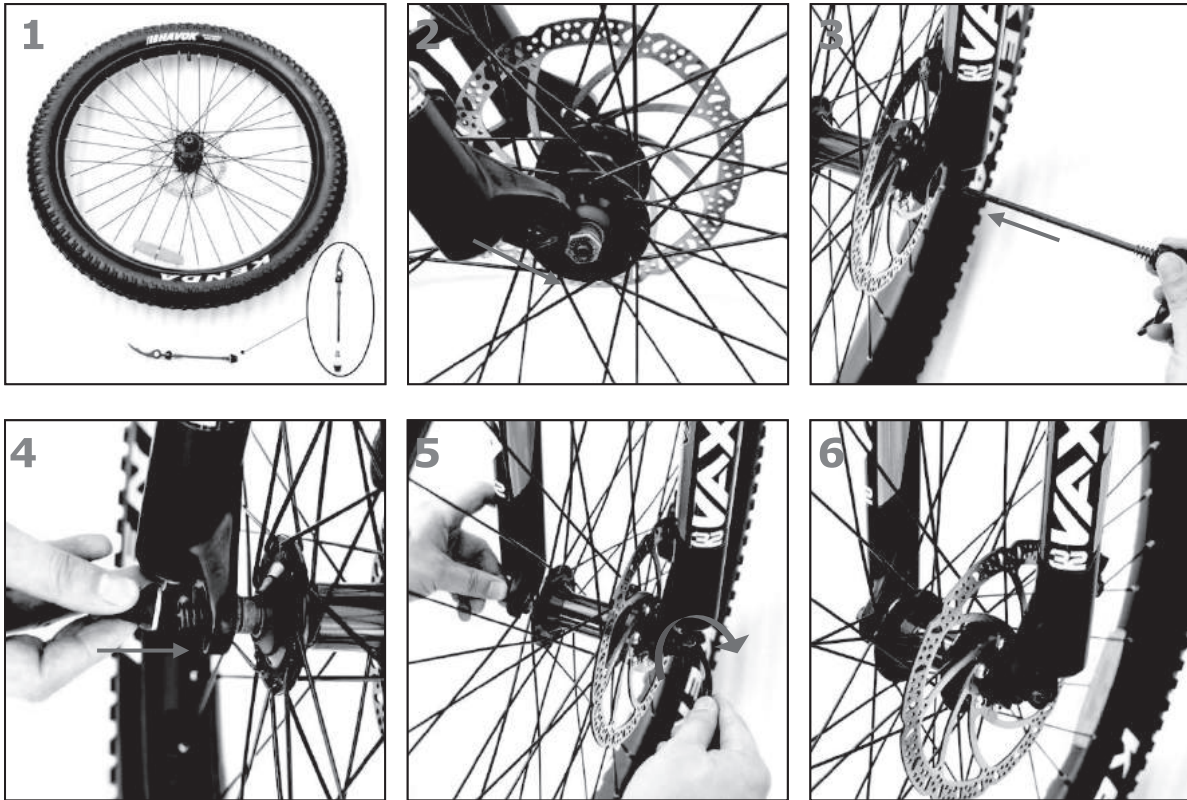
1. Put the whole wheel between the dropouts of the fork.
2. Make sure the disc rotor is put into the disc brake correctly.
3. Put the axle of the hub or motor into the dropout of fork in the both sides correctly. Meanwhile make sure the anti-rotation washer is outside and its direction is correct.
4. Tighten the nuts in both sides clockwise firmly by the 15mm or 18mm open end spanner or wrench.
5. Connect the cable end as the arrow marked (Ignore this step if the normal hub wheel)
6. Put the plastic cap in the both sides.



Way B: Quick Release(QR) Wheel.

1. Get the QR and remove the one end nut cap with the spring by hand.
2. Put the wheel hub axle into the dropouts of the fork.
3. Insert the axle of the QR through the hub.
4. Put the spring and the nut cap.
5. Turn the nut anticlockwise 1-2turns meanwhile turn the QR lever clockwise rightly by hand.
6. Close the QR lever close to and on the front of the leg of the fork.(QR

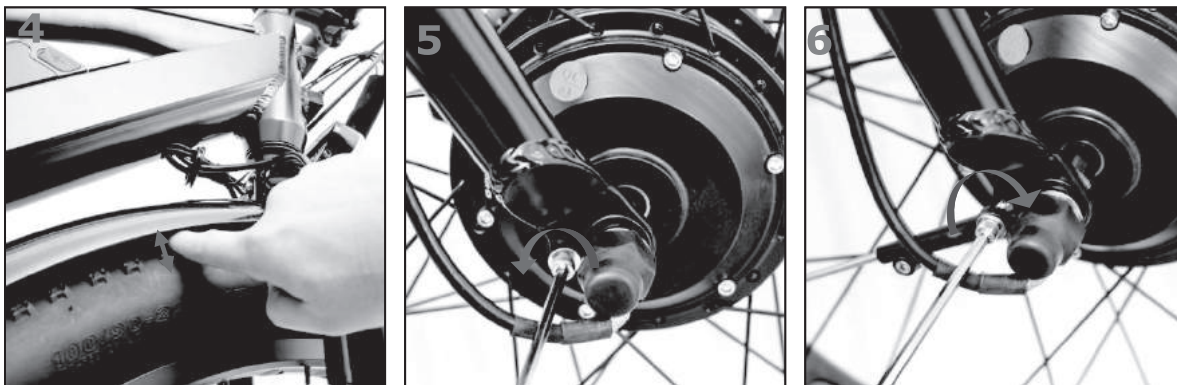
should be tight.)



● **STEP 4. The Fender Assembly**

1. Turn the bolt anticlockwise by M5 Allan wrench meanwhile fix the nut by 10mm close end spanner or wrench. Remove the nut.
2. Put the fender through the fork legs from the back of the fork. And attach the bolt.
3. Turn the nut onto the bolt 1-2turns by hand, and then fix it by hand. Meanwhile tighten the bolt clockwise firmly and adjust the light and fender rightly.
4. Make sure the space between the tire and fender is more than 10mm.
5. Remove the bolt on the fork dropouts anticlockwise by M5 Allan Wrench.
6. Attach the leg of the fender and tighten the bolt clockwise firmly.





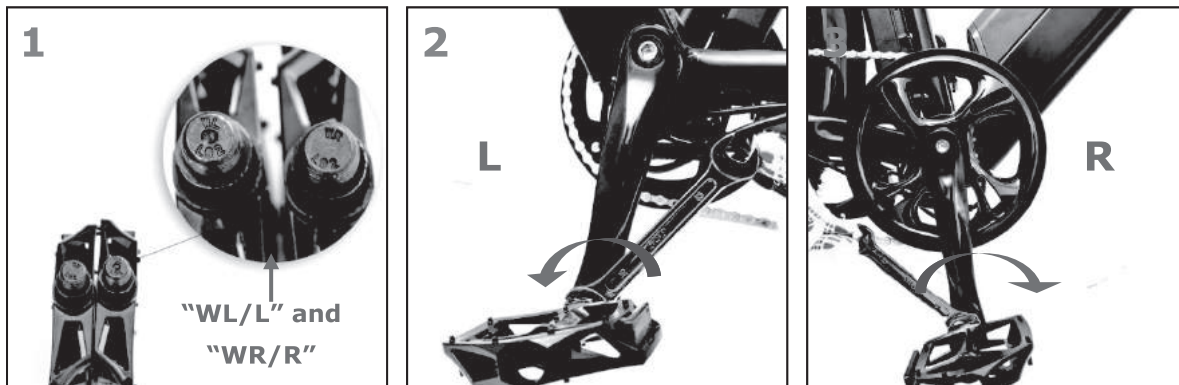
● STEP 4. The Seat Assembly

1. Insert the post of the seat into the seat tube. Make sure the MINIMUM INSERTION mark must remain in the tube.
2. Adjust the right angle and right height of the seat. And then tighten the lever of the clamp clockwise meanwhile fix the nut in the another end by hand.
3. Close it correctly.



● STEP 5. The Pedal Assembly

1. Please see the "WL / L" and "WR / R" on the axle of the pedal. The pedal marked "WL" is in the left side(No crank wheel side) and the one marked "WR" is in the right side(Crank wheel side)
2. Attach the pedal marked "WL or L" into the crank in LEFT side(No crank wheel side). Turn the axle towards the FRONT wheel and tighten it by the open spanner or wrench firmly.
3. Attach the pedal marked "WR or R" into the crank in RIGHT side(Crank wheel side). Turn the axle towards the FRONT wheel and tighten it by the 15mm open spanner or wrench firmly.



PART THREE

DISPLAY INSTRUCTION

(Down load from <https://eunorau-ebike.com/pages/download> , If need more information, please ask the detailed instruction as your display type number on your e-bike from the Vendor)

BATTERY INSTRUCTION

(MORMAL WAY)

Remove:

Turn and push the key anticlockwise meanwhile hold the lever of the battery and take out the battery from the frame.



Assembly

1. Install the battery into the bike and lock it. It is "OFF" status.
2. Turn the key to "ON" mark on the lock and the power is on. Turn the key to "OFF", the power is cut.

Charging the battery

Fully charge your battery before your first ride. The charger light will change from red to green when the battery is fully charged. Then switch off and remove the charger.

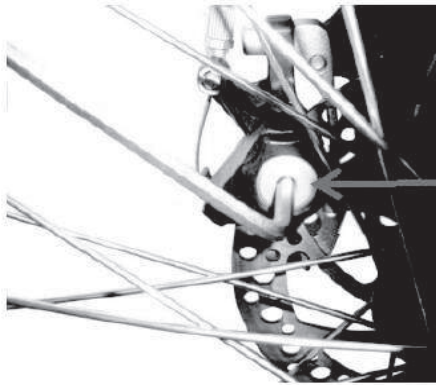


PART FOUR

Regular Adjustments

Disk Brake adjustment

Your brakes will need regular attention to ensure they operate correctly. As the pads get used you will need to adjust them to stay close to the metal rotor. A bike shop is the best place to have your brakes checked and adjusted, but if you need to do this yourself here's how.



Every few months (depending on use)...

Looking through the spokes you will see the inner pad adjuster...



Use a hex key to move the inner pad closer to the disk rotor.

The outer pad can be quickly adjusted closer by unwinding the cable adjuster

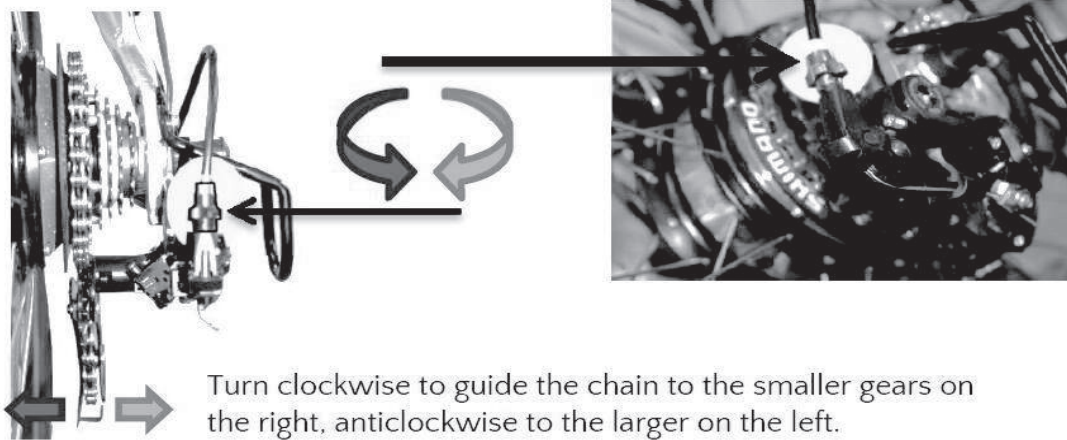
(anti-clockwise) at either the brake lever or at the calliper.

Hydraulic brakes need no adjustment serviced by a qualified mechanic.

Gear Adjustment:

A noisy gear, or poor gear selection, is often because the chain is not lined up precisely with the cogs. Looking from the back of the bike, line up the chain using the adjuster.

Line up the chain with gear 1 and then check again using the highest gear.



PART FIVE

NORMAL INSTRUCTION

WARNING:

Always wear a cycling helmet which meets the latest certification standards and is appropriate for the type of riding you do. Always follow the helmet manufacturer's instructions for fit, use and care of your helmet.

1. The process of closing .

- A.** Stop ride and keep the bike is not moving.
- B.** Turn off the switch button on the display.
- C.** Turn off the switch button under the battery box.
Turn the key when you want to take out the battery box.

3. Warning

- A.** Keep the connection(motor and battery) is well and stable before ride.



B. Don't turn on/off the switch button(battery and display) when you a riding.

C.



Keep fix well the QR of seat post and pedal are fixed.

Battery

1. Important safety notes concerning the battery

WARNING

To prolong battery life, store the scooter in garage to prevent low temperatures and affect the battery performance.

- Do not dismantled or dispersed the battery cells.
- Keep away the battery from children.
- Do not connect cathode and anode of charger during charging and discharge process. Prohibited to use any conductor to connect both cathode and anode. This will cause short circuit.
- Prohibited battery dip in the water.
- Prohibited placed the battery in the temperature over 60°C next to the high-temperature heat source, such as heating, etc.
- Prohibited knock on, throwing and trample the batteries, etc.
- Prohibited edge tool or nails lacerate and cut through the battery.
- If the leak occurred, electrolyte has come into the eyes, please do not rub. Wash immediately with plenty of water.
- If the battery in smell, heat, smoke, changed colors, distortion or any abnormal, stop using the battery and away from it immediately.

2. Protection

To extend the battery life and be Intelligent Use of Li-ion battery ,here are the regulations:

Firstly: Requirements on charging and discharging

A. charge:the charger must be the assorted one . First, connect the power to the charger. second,insert the charger's out-put connector to the battery's in-put connector. Third, when the signal light is on,please pull out the battery's in-put connector first. The common single charging time is about 6-8 hours.if the battery be blow-up, the charging or discharging must be stopped.

B. avoid over discharge: charge the battery timely after discharging, in order to avoid the over-discharge.

Secondly: Requirements on storage

A . Lion-battery cannot be stored at the place where is over hot and over humidity.therefore the temperature of the storage should between -20 to 55degree,and further more the storage must be kept in dry,clean and the battery should not be piled

up.

B . the battery cannot be stored for a longtime without charging. The battery should be charged once a month. The battery should be stored with fully charged.

Thirdly: Maintenance

A . When you test the voltage of the single piece of the battery-cell, you have to test the cell directly ,not by the wire. By doing that, it can avoid the voltage decline.

B . You have to wear the gloves or clip the finger nails before you take out the single piece of the battery. So as to avoid damage the cover of the battery.

C . Forbid bending the battery cell,the top edge of the seal-up.And also the falling ,hitting and short circuit are prohibited .

D . When you re-assemble the battery,there are some special notes we have to concerned in mind. The temperature of the electric iron should below 350°C; the welding time must be less than 3 seconds; and the frequency of welding should be no more than 5 times;the second welding must be done after cooling.

Charger

1. Charger function

Trouble shooting:

Should there be any difficulties with charging please check if:

-the power cable is connected properly.

-the charger plug or the battery socket is damaged.

-the battery shows any damage on the surface.

-the power socket works and whether the correct voltage is provided. (if necessary, plug in another gadget and check).



Please use only the original charger which was supplied with the bike.

This charger is specially made for the lithium battery.

The LED light indicates the battery status as shown on the table below:

Charging cycle and LED indication for lithium battery	
LED	Mode
green	the battery is not connected
red	the batter is charging
green	the battery is charged, the charger switches off

2. Important safety notes concerning the charge

Before you first use the charger please read the following notes regarding safety carefully!



WARNING

-Keep the charger away from children!

-In order to prevent any possible injury this charger should only be used for the original lithium battery which is supplied together with the bike. Any other battery is not

compatible and risks to explode while charging, causing serious injury to people as well as damage to other equipment.

- Using this charger for batteries not supplied with the bike could risk catching fire, provoke electric shock and/or cause serious injury.

-Please make sure that the charger is always kept dry and does not get wet at any time.

-Should there be an incidence of contact with water or any other liquid,make sure to unplug the charger immediately from the power socket and have it inspected by a specialty dealer.

-Make sure the charge is always placed on a flat surface when in use.

-Please make sure that the charger is always unplugged and removed from the power socket when not in use.

-Before using the charger, always make sure that the plug and the cables are not damaged.

-Never connect a damaged cable or plug to the power socket.

-Never try to disassemble the charger. Wrong re-assembling could cause an electric shock and serious injury.

-Always unplug the charger before cleaning it.

-The charger should only be cleaned with a dry cloth. Never use a wet cloth, oil or any other liquid.

-Do not use an extension cable. Only use the original cable supplied with the charger.

-An extension cable might, if not 100 % compatible,catch fire or cause an electric shock.



WARNING:

**Always do the Mechanical Safety Check before you get on a bike.
Be thoroughly familiar with the controls of your bicycle**

Check everything!

This checklist will help make sure your bike is properly assembled and safe to ride:

Handlebars

Check your handlebars are straight and secure. To check, grip the front wheel between your legs and try to turn the handlebars.

Wheels

Make sure the front and rear mudguard stays are tight.

Ensure the quick release mechanism is properly gripping the front wheel.

Seat and post

The seat and post should be straight, fastened tightly and not exceed the max height indicator.

Pedals and chain

The pedals should be wound in and fully tightened.

Gears should engage cleanly and change smoothly.

Brakes

Test front and rear brakes whilst rolling the bike forwards – both wheels should stop completely.

Check there is more than one finger thickness between the grip and the brake lever when fully depressed.

Rack

Ensure that the rack is secure and that all bolts are tight.

Kickstand

The kickstand shouldn't wobble. Tighten if necessary.

Tires

Pump tires to very firm (impossible to deform with your thumb). PSI should be 60 for our large bikes and 50 for Compacts.

Electrics

Test both lights.

Fully charge the battery before use.

1. Before riding

Adjust the height of the handlebars and saddle to suit the rider, whose toes should be able to just touch the ground.

Check all lights and displays are working.

Check regularly to ensure that the electrical connectors between the bike and battery are clean.

Check the brakes: this can be done by putting the front brake on and pushing forwards. Do the same with the back brakes. The bike should not move and the brake levers should not touch the handlebars. The brakes should work without having to press down too hard on the handles.

If your bike has a quick release on the front wheel check it is fully tightened and the wheel is running true. Quick release mechanisms can more easily work loose than conventional axles and so should be checked before every ride.

Make sure your clothing is suitable for riding. Long, loose or flowing garments may become caught in the wheels or chain.

Wear an approved safety helmet.

2. Riding your e-bike

After mounting the bicycle, turn on the main switch, the power display light will come on, indicating power is connected. Release the kickstand.

Placing one foot ready to pedal, **check that it is safe to proceed**, and then set off. You will feel the motor just after you begin to pedal.

As you cycle, the battery power will be used up, and the power level indicator lights will go off in turn. If the battery becomes flat, turn off the main switch and use pedals only to

ride, recharge fully after journeys have accumulated over 10 miles.

Use both brakes together when stopping.

When riding in wet conditions your brakes will be less effective and a greater stopping distance is needed. In dry conditions your stopping distance should be less than 4 meters; this can increase to 15 meters on wet or snowy roads.

Never ride through deep puddles or streams. Ensure that water **never** reaches the motor and controller level.

Avoid loose or uneven surfaces, up and down keeps and watch out for unexpected pot holes.

Don't carry extra passengers or heavy loads, as this will damage the motor and battery.

Never ride under the influence of drugs or alcohol, or when feeling unwell.

Always ride with lights at night.

The minimum legal age for riding an electric bicycle in the UK is 14 years.

Please follow the Highway Code for the safety of yourself and others.

If you are new to cycling or an inexperienced rider, find a quiet place to practice and gain confidence before trying to ride on busier roads.

Buy a copy of the Highway Code; most good newsagents have it.

Bike storage and maintenance:

Don't leave the bike in the rain for long periods, or in damp conditions:
Always store in a dry place.

Don't leave the bike in direct sunlight for long periods, as this may cause some of the electrical components to overheat and result in operation failure.

Warning:

Don't tamper with, or disassemble complex electrical components.

Don't touch the bottom of the battery case with keys or other metal objects in case they damage the electrical connectors between the bike and battery.

Keep your bike clean

Use a degrease detergent, or a specialist chain-cleaning product to clean and oil your chain. A properly cared-for chain can make a bicycle more than ninety eight per cent efficient at converting kinetic energy into moving your bike forward. Juicy Bike chains are stainless steel and need very little oil. Too much oil can pick up grit and so increase wear. We recommend Green oil's, Clean Chain Degrease and a little Chain Lube.

Check tires, brakes and gears monthly

Check the tire pressure; make sure it is enough at least 40 PSI. Inch and preferably 50 (Compact) or 60 PSI. Low tire pressure will make the bike less efficient and will easily damage the tires.

Brake adjustment

Brake levers should operate the brakes easily with only a small amount of travel at the handlebars. If there is not enough room for two fingers between the lever and the handlebars then adjustment is essential. See how to adjust above.

Chain adjustment

The chain may become looser after a long period of use and can only be adjusted by removing links, which is best carried out at a bike repair shop.

If you are unsure about brake, gears or chain adjustment, take the bike to be

serviced at your local cycle shop.

Lithium Battery Care

You should fully charge your new battery before your first ride. In regular use, keep the battery fully charged after every few short rides. If possible try to keep the battery between 50 and 95% charged, charging after 10 miles or so.

Make sure you charge at least once every month.

Try to charge just before a journey, rather than keep your battery at 100%.

Letting the battery run empty on most rides will shorten its lifespan considerably – it would be better to plan your battery size so regular, everyday journeys use about 50% of your battery.

Never charge the battery in **freezing** conditions. If the battery has been used in very cold conditions, let it warm to room temperature before charging.

If storing the battery for any length of time without use (over the winter say), try to keep it at around 60-80% charge, in a cool place inside, and top up the charge a little every month. This will decrease the aging process of the battery (although every battery will slowly age whether used or not).

Lithium batteries deteriorate more quickly when stored at higher temperatures and when repeatedly fully discharged. When returning to use, charge the battery fully to prepare it for everyday use.

Keep your battery out of the weather whilst not riding the bike, preferably in a cool place inside.

Always use the charger supplied with the bike. Before charging, check that the rated input voltage matches the voltage level for your country.

Don't open the charger case for any reason.

To recharge the battery: tip up the seat, unlock the battery, remove and connect to charger. Alternatively the battery can be recharged while still in the bike, just make sure the bike is switched off.

A full charge can take between 4 to 6 hours before the red charging light turns green. The charger will get quite warm whilst charging.

When the light changes from red to green the battery is fully charged. After charging, disconnect the charger from the battery.

Always charge the battery indoors and away from damp areas or where water is used. When charging keep both the battery and charger away from flammable materials or products.

Our lithium batteries, if treated correctly, will have a long life. At the end of its life, the battery should be recycled and a replacement can be obtained from supplier.

The battery is deemed to have reached the end of its life when achieving only 40% of its original capacity.

Warranty Information:

Main parts have a warranty of one year. This covers mechanical and electrical parts: including frame, display, PAS, motor, controller, battery and charger.

The warranty is subject to proper care for and reasonable use of the bikes Lights, brake

pads, inner tubes, tires, chain, cables, seat etc. are regarded as consumables. When replacements are required these can be purchased from your local bicycle shop.

Returns Policy

We hope you will be pleased with your purchase. Should you wish to return anything bought from us, we will be happy to refund or exchange a product provided it is in fully resalable condition.

Returns should be made within a reasonable time (usually 14 days) and in original, undamaged packaging. If we find that the product has not been returned to us in fully resalable condition, we reserve the right to refuse a refund on the item, or deduct a reasonable amount of the original selling price from the refund.

Any refund will cover the cost of the goods, but will exclude the nonrefundable delivery charge. The cost and risk of returning goods is the responsibility of the customer. The customer should arrange shipping back to Bike vendor and ensure that any parcel is adequately insured.

Faulty Goods

a) Faulty goods notified to us WITHIN 14 days of delivery will be collected, repaired or replaced, and redelivered free of charge. Note: At our discretion we may decide to issue a full refund instead of providing a repair or replacement.

b) Faulty goods notified to us AFTER 14 days and within the warranty period are to be returned to Bike vendor at the expense and risk of the customer. The customer should arrange their own shipping back to Bike vendor and ensure that any parcel sent to us is adequately insured. Goods that are repaired or replaced under warranty will be re-delivered free of charge.

Note: At our discretion we may decide to issue a refund instead of providing a repair or replacement.

Terms and Conditions

Refunds are dependent on the condition of the goods received back.

Damaged or incomplete goods will not be refunded in full. Goods damaged as a result of misuse will be subject to a repair and re-delivery charge. The customer will be advised of all chargeable repairs before such work commences.

Repairs or replacements will be made free of charge within the warranty period only where the fault is not caused by misuse of the product or through normal wear and tear.

Want to connect with other EUNORAU family members?

Join the conversation online!

Our friendly and informative digital community is a great resource for new and experienced riders alike.

Share your bike, your trail, your scenery, and your photos!

Support new and prospective EUNORAU owners by participating in discussion threads, giving advice, and sharing your experiences.

Search EUNORAU eBike Owner's Group on Facebook.

Share the Smile to your Friends?

Ambassador and Affiliates Programs

Become an Affiliate:

Earn up to 5% commission for every successful referral?

Join the EUNORAU affiliate program and you can earn 5% affiliate commission for every successful referral.

Plus there's no ceiling limit on how much you can earn.

To sign up and receive your custom affiliate link please visit:

<https://eunorau-ebike.goaffpro.com/>

Become an Ambassador:

Love your EUNORAU ride?

Are you excited about EUNORAU eBikes

and want to share your experience with interested new comers?

Sign up for our ambassador program

to be listed on our interactive map.

Connect with prospective owner's

in your local area and arrange

for a test ride.

Need Support?

Our customer experience team is available for support and inquiries from Monday-Friday 9-5 UTC.

For support after hours please email info@eunorau-ebike.com or call +1-702- 601-5552.

Online Display Manual: <https://eunorau-ebike.com/pages/download>

Facebook Group: www.facebook.com/groups/eunorauebikeowner/

Youtube: <https://www.youtube.com/c/EUNORAUEBIKES>

Facebook: <https://www.facebook.com/eunorau>

Instagram: <https://www.instagram.com/eunorauebike/>

Reddit: <https://www.reddit.com/user/eunorauebike>

Please provide the following information before make the call or email.

Frame Serial Number:

Order Number:

(Motor/Battery/Controller)Number:

Question videos and photos is necessary.

You can transfer the files to us via this website <https://wetransfer.com/>

Your bike's unique Frame Serial Number is like a fingerprint, identifying the bike in the event that it is lost, stolen, or damaged.

The serial number is required for most insurance policies and claims and to identify lost or stolen bikes.

Your bike has its serial number engraved on the frame:

1. on the front of the head tube (near the headlight)
2. or on the bottom of the Bearing Bracket Tube (near the pedals)

Please record your Serial Number before your first ride and have your Order Number ready when contacting Support.



Welcome to Visit us for a Test rides of all our electric bikes in Las Vegas.

Address: 6585 Arville St Suite B, Las Vegas, Nevada, 89118, USA

Email: info@eunorau-ebike.com

Customer Service: +1 7026015552 (8: 00-12: 00, UTC-8)

www.eunorau-ebike.com

