

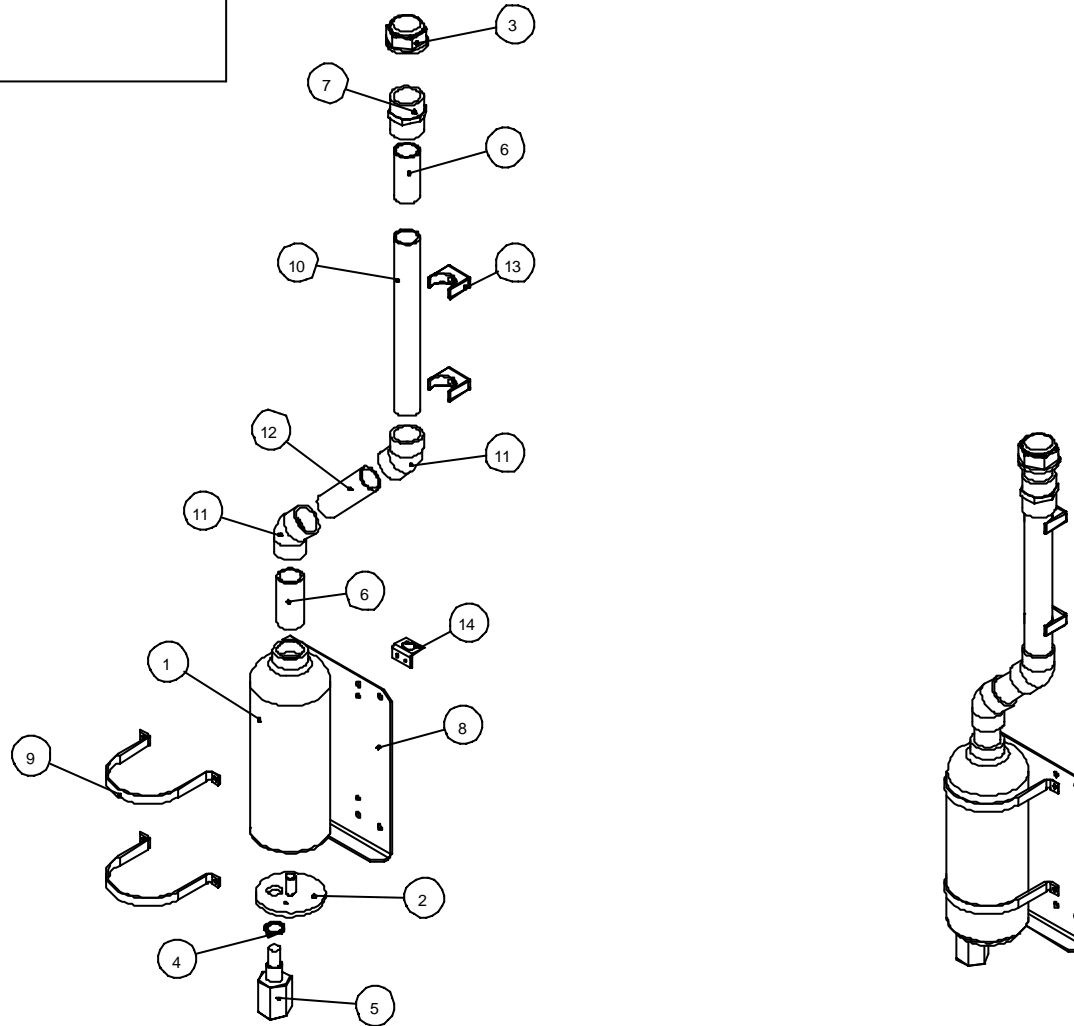
DRAWING NUMBER
003037

ALL DIMENSIONS ARE AFTER PLATING

ALL THREADS TO BE FREE OF PAINT

REMOVE ALL BURRS & SHARP EDGES

ITEM NO.	PART NO.	ISSUE	DESCRIPTION	QTY.
1	P007733	A	SOLVENT BOTTLE	1
2	P007732	A	BOTTLE BOSS	1
3	003065	A	BOTTLE TOP	1
4	P007766	A	SEAL	1
5	P007758	A	LIQUID SENSOR	1
6	003057	A	NIPPLE	2
7	003058	A	PLAIN SOCKET	1
8	003265	B	BOTTLE MOUNT	1
9	P009644	A	BOTTLE STRAP	2
10	003059	A	TUBE 250	1
11	003060	A	ELBOW 45 DEGREE	2
12	003061	A	TUBE 65	1
13	003062	A	TUBE CLIP	2
14	001413	B	4WAY MOLEX BRK	1
15	002209	A	NON RETURN VALVE	1



PART No. & SUPPLIERS REF. CODE TO BE PRESENT ON ALL COMPONENTS

THIS DRAWING AND THE COPYRIGHT IN IT, IS THE PROPERTY OF REPRINT IT MAY NOT BE COPIED, REPRODUCED, PUBLISHED OR DISCLOSED IN WHOLE OR IN PART TO ANY THIRD PARTY WITHOUT THE WRITTEN CONSENT OF THE COMPANY.

SURFACE ROUGHNESS
ITD
1.6 Am

THREADS: ISO COARSE
TO CLASS 6H/6g U.O.S.

DIMENSIONS
IN MM'S-INCHES IN ()

MATERIAL
ASSY

FINISH
ASSY

TOLERANCES UNLESS
OTHER WISE STATED

CAST. ± 0.5
GEN. ± 0.2
ANG. ± 0.5°
CRS. ± 0.1

CAD SCALE
1:5

DO NOT
SCALE

HISTORY

X	

LATEST ISSUE

No.	A
DATE	16/01/2006
C/N	
INITIAL	

DRAWN
G.C.

DATE
16/01/2006

PRODUCT CODE

TITLE
BOTTLE ASSEMBLY

DRAWING NUMBER
003037

SH. 1	A
OF 1	3