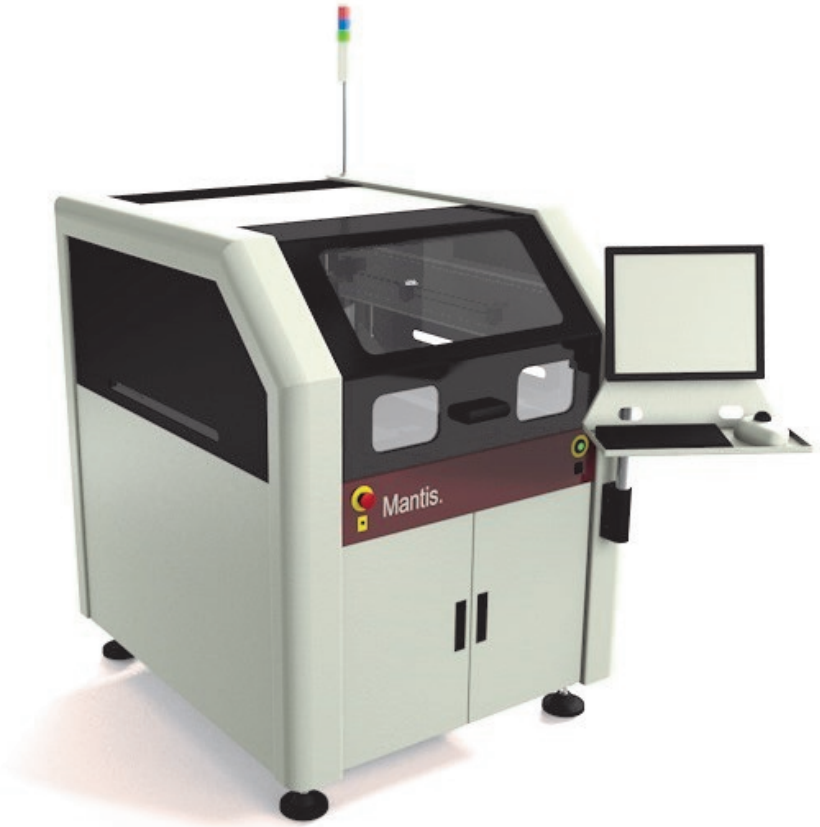


mantis.

29" FULLY AUTOMATIC IN-LINE PRINTER

FEATURES

- Fast product setup and change over
- High accuracy vision alignment system
- Simple 'Point and Click' Vision Set-up
- Screen sizes up to 29"
- Fast cycle times (< 10 secs)
- Robust construction for precise, repeatable printing
- Fast, precise closed loop servo motor control throughout
- Auto stencil loading/unloading
- Auto conveyor width adjustment
- Various tooling options available
- Laser guided tooling post placement option
- Unlimited product file storage
- Automatic stencil cleaner with wet/dry and vacuum operation
- Easy, intuitive operator software
- Heavy board handling as standard
- Optional post-print 2d inspection
- SMEMA interface protocol
- Smallest in class machine footprint
- Lowest cost of ownership
- English, German and French languages. Others on request.



OVERVIEW

The versatile **Mantis** printer from Reprint is compact, precise, exceptionally easy to use and designed for use in high mix, mid-to-high production environments where fast changeovers and flexibility are paramount.

Its construction consists of a rigid two-part welded frame, it uses quality bearings for high precision guidance, has 1µm resolution encoders for positional accuracy and combined with Swiss made servo motors provides outstanding performance, long life and the lowest cost of ownership.

The high precision alignment comes from the unique, multi-coloured illuminated twin camera system. Fiducial teaching is a simple 'Point & Click' operation. It can also recognise pads and apertures as alignment references.

The conveyor system comes with auto-width adjustment and has for heavy board handling as standard. Transport direction is fully programmable and uses the SMEMA interface for board transfer.

Numerous tooling options are available ranging from manually placed tooling posts to automatic tooling options such as Vacu-nest, GridLok.

Simple and intuitive user software make using the printer easy. A step by step product setup procedure helps ensure new products are configured error-free.

Other features include automatic stencil loading/unloading and a fully automatic under stencil cleaner with wet, dry and vacuum assist modes. The optional post print 2d inspection system can simultaneously check both board and stencil for possible printing errors.

With a small machine footprint, fast cycle time and its array of standard features and options, the **Mantis** printer is the printer of choice for the lowest cost of ownership.

reprint
INTERNATIONAL

BRIEF SPECIFICATION

Max Board Size: 650 x 600mm

Max Print Area: 608 x 580mm

Board Thickness:
0.2 to 5mm (others available)

Printing Modes:

- Print/Print
- Flood/Print
- Print/Flood
- 1 or 2 deposits

Twin Camera Vision System
with multi-coloured illumination
Simple 'Point and Click' fiducial
teach.

Stencil Location:
Automatic positioning
pneumatically clamped

Print Repeatability: ± 10 microns
Print Accuracy : ± 15 microns

Squeegee Types:
Metal or Polyurethane
150mm 220mm 300mm
360mm 420mm 460mm

Print Speed: 5-200mm/S

Print Pressure: 0.1 to 20Kg

Snap Off Speed: 0.1 to 10mm/S

Unlimited Product File Storage

Product Changeover in 5
minutes or less

Automatic conveyor width
adjustment

OPTIONS

Under stencil cleaner with
vacuum

Post print 2d inspection

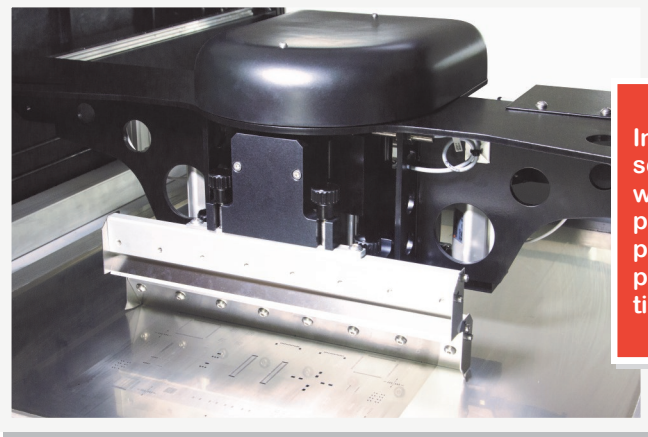
Automatic tooling

Multi-purpose screen adaptor
for stencils smaller than 29"

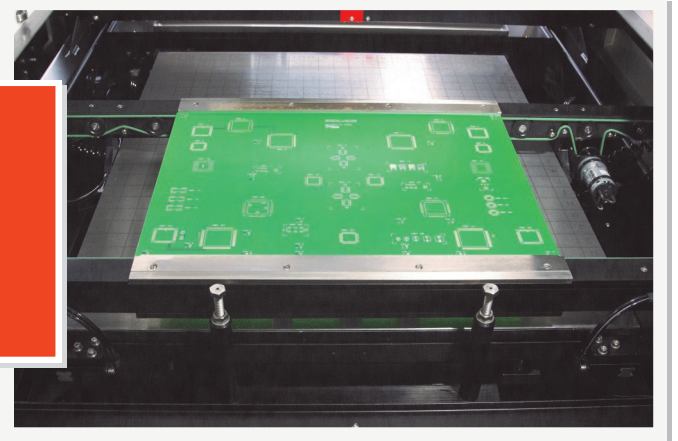
DIMENSIONS

1100 x 1260 x 1450mm

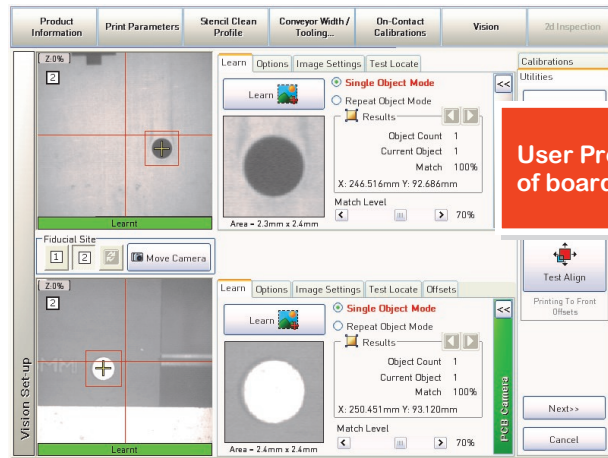
Reprint has a policy of continuous product
development. The description and specification within
this publication does not form part of any contract and
are subject to change without prior notice.



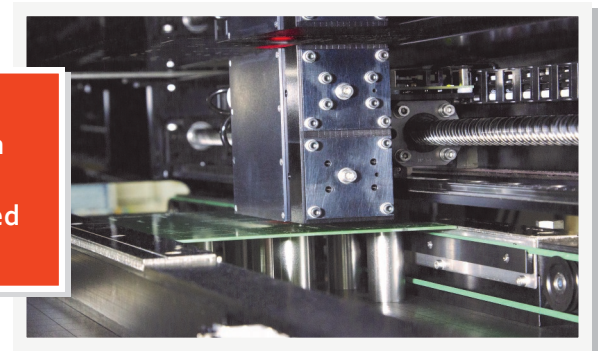
Independent, dual
squeegee print head
with programmable
printing speeds and
pressure for quality
printing results each
time



Large and heavy
boards are easily
handled with the
fully automatic
conveyor system



User Program showing the teaching
of board and stencil fiducials



Dual camera
vision system
with unique
multi-coloured
illumination

For your nearest distributor or agent contact Reprint directly.

reprint
INTERNATIONAL

10 Enterprise Park • Piddlehinton • Dorchester • Dorset •
England DT2 7UA

tel. +44 (0)1305 849254
email: enquiries@reprintservices.co.uk
website: www.reprintservices.co.uk